

4

3

2

1

THIS DRAWING IS UNPUBLISHED.

RELEASED FOR PUBLICATION

© COPYRIGHT

ALL RIGHTS RESERVED.

LOC DIST

REVISIONS

P	LTR	DESCRIPTION	DATE	DWN	APVD

REPLACED BY OCEAN STYLE APPLICATOR PART NUMBER

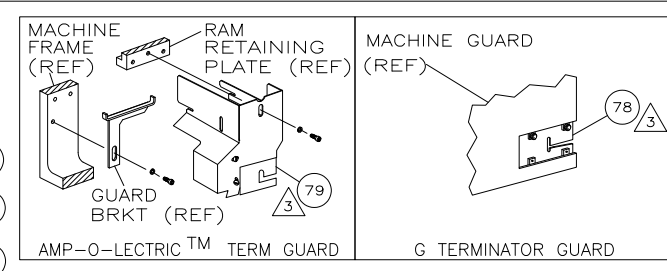
FOR REPLACEMENT PARTS FOR APPLICATOR REFER TO ADDITIONAL PAGE(S). SPARE PARTS KIT (IF LISTED) WILL REMAIN AVAILABLE.

THE REPLACEMENT OCEAN STYLE APPLICATOR HAS THE SAME TERMINATOR/PRESS INTERFACE AS APPLICATOR

THIS DRAWING IS A CONTROLLED DOCUMENT.		DWN	 TE Connectivity		
DIMENSIONS:		CHK			
TOLERANCES UNLESS OTHERWISE SPECIFIED:		APVD	NAME		
 0 PLC ± 1 PLC ± 2 PLC ± 3 PLC ± 4 PLC ± ANGLES ±		PRODUCT SPEC	RESTRICTED TO		
		APPLICATION SPEC	SIZE	CAGE CODE	DRAWING NO
MATERIAL	FINISH	WEIGHT	A3	C-	
		SCALE	SHEET	OF	REV

THIS DRAWING IS A CONTROLLED DOCUMENT.

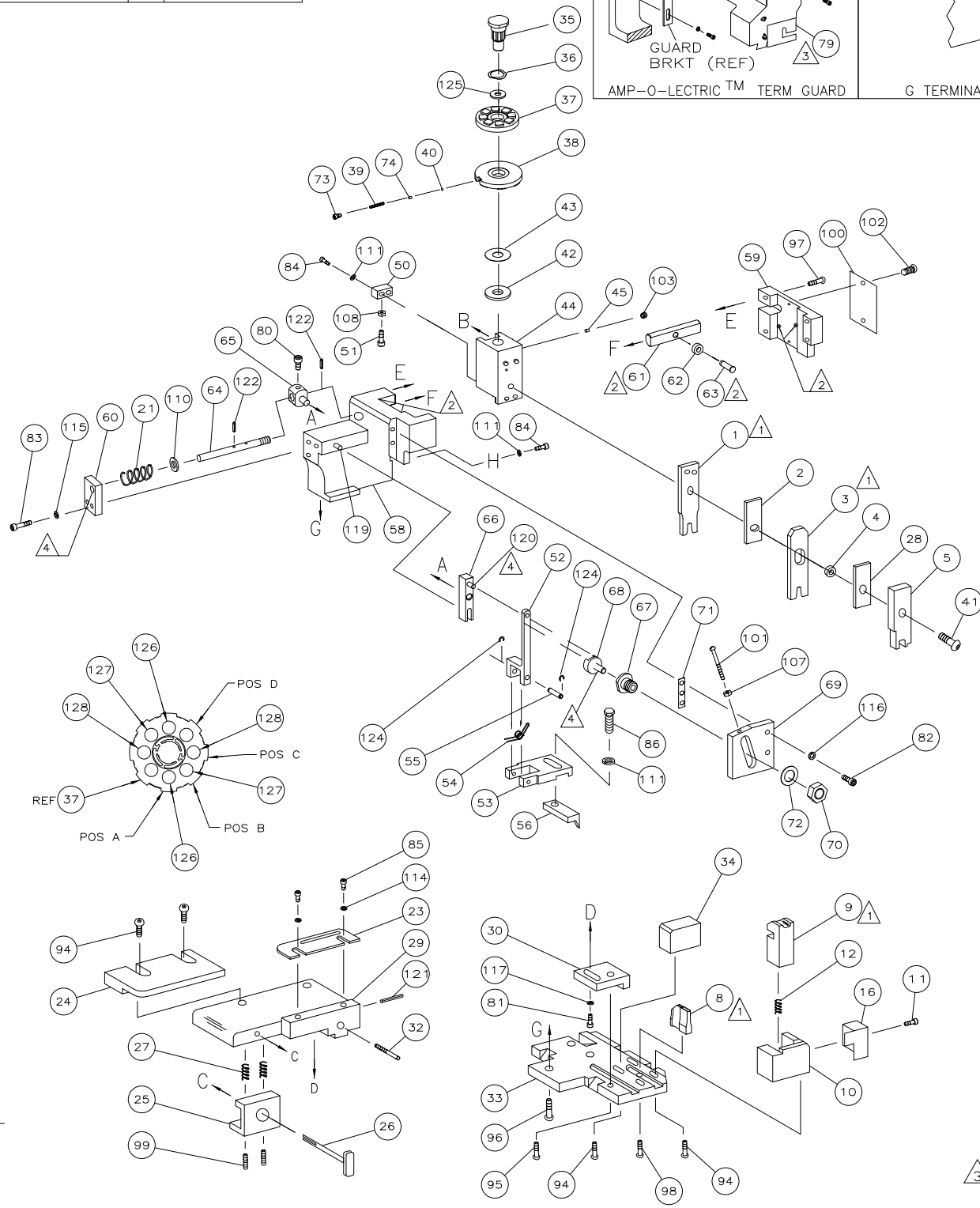
PART NUMBER	REV	FIRST USED
567067-1	T	854400-1
567067-2	T	565435-5
567067-3	T	354500-1
7-567067-7	T	-



TERMINAL NAME:	
MINI UNIV MATE-N-LOK™	
APPL SPEC 114-5050	
PIN 170360	SOCKET 170362
APPL SPEC 114-16017	
PIN 770903	SOCKET 794137
TERM APPL SPEC -	

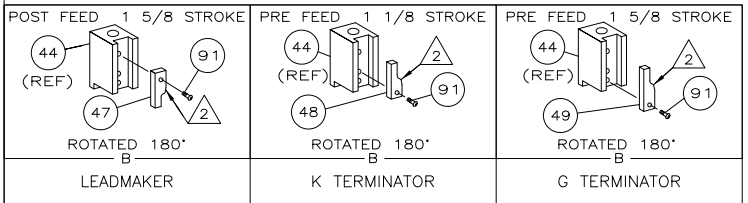
CRIMPING DATA			
PAD LTR	CRIMP HEIGHT	WIRE SIZE	
A	.042 ±.002	18	
B	.036 ±.002	20 OR (2) 22	
C	.032 ±.002	22	
D	NOT	USED	
CRIMP	SIZE	TYPE	RANGE
WIRE	.062	F	22-18
INSUL	.110	F	.059-.094
FEED	.433	APPL INST 408-8040	SET UP GAGE LAYOUT 458637-1 1178
WIRE STRIP LENGTH		-	

USED ON	
-1	LEADMAKER MECH POST FEED -77 SPARE TOOLING KIT
-2	BENCH MODEL K MECH PRE FEED
-3	BENCH MODEL G MECH PRE FEED



QTY	REQD	PER	ASSY	PART NO	DESCRIPTION	ITEM NO
-	2	2	2	4-354779-3	PIN, WIRE DISC (.3205)C	129
-	2	2	2	3-354779-5	PIN, WIRE DISC (.3165)B	128
-	2	2	2	2-354779-4	PIN, WIRE DISC (.3110)A	127
-	1	1	1	986950-1	WASHER, FLAT PRECISION	126
-	REF	REF	REF	21045-3	RING,RET "C"(Ø.187)FD FING PIN	125
-	REF	REF	REF			123
-	REF	REF	REF	5-21028-1	PIN,SLT SPR(Ø.125x.50)ADJ ROD	122
-	1	1	1	4-21028-0	PIN,SLT SPR(Ø.093x.75)ST GDE PL	121
-	REF	REF	REF	1-21030-1	PIN,DOWEL(Ø.187x.50)LEVER	120
-	REF	REF	REF	1-21030-6	PIN,DOWEL(Ø.187x1.25)HOUSING	119
-						118
-	1	1	1	21024-5	WASHER, LOCK(#10)ADJ BLOCK	117
-	REF	REF	REF	21024-5	WASHER,LOCK(#10)ADJ PLATE	116
-	REF	REF	REF	21024-5	WASHER,LOCK(#10)FEED GDE ROD	115
-	2	2	2	21024-2	WASHER,LOCK(#4)FRONT STP GUIDE	114
-						113
-						112
-	4	4	4	21024-4	WASHER,LOCK(#8)STRIPPER	111
-	REF	REF	REF	21899-4	WASHER,FLAT(Ø5/16)SCREW ADJ	110
-						109
-	1	1	1	21018-5	NUT,HEX(NO.6)HOLDDOWN	108
-	REF	REF	REF	21018-5	NUT,HEX(6-32)FEED ADJ	107
-						106
-						105
-						104
-	1	1	1	21009-2	SCR,SKT SET(1/4-20x.25 LW)RAM	103
-	2	2	2	21017-2	SCR,DRIVE(#2x.19)ID PLATE	102
-	REF	REF	REF	6-23715-5	SCR,PAN HD(6-32x1.50)FEED ADJ	101
-	1	1	1	461264-1	PLATE, IDENTIFICATION	100
-	2	2	2	5-21006-6	SCR,SET(10-32x.75)DRAG	99
-	1	1	1	22733-8	SCR,BHC(8-32x.38 LW)ANVIL	98
-	REF	REF	REF	2-21002-9	SCR,BHC(10-32x.75)CAP	97
-	REF	REF	REF	2-22733-8	SCR,BHC(1/4-20x.62)HOUSING	96
-	REF	REF	REF	2-21002-7	SCR,BHC(10-32x.50)SG ADJ BLOCK	95
-	6	6	6	2-21002-2	SCR,BHC(8-32x.50)SHEAR	94
-						93
-						92
-	1	1	1	1-21002-7	SCR,BHC(6-32x.38)CAM	91
-						90
-						89
-						88
-						87
-	1	1	1	2-22603-0	SCR,HEX HD(8-32x.31)FEED FINGER	86
-	2	2	2	1-21000-3	SCR,SHC(4-40x.25)F ST GUIDE	85
-	3	3	3	2-21000-7	SCR,SHC(8-32x.50)STRIPPER	84
-	REF	REF	REF	3-21000-7	SCR,SHC(10-32x.50)FEED ROD GD	83
-	REF	REF	REF	3-21000-6	SCR,SHC(10-32x.62)FD ADJ BLK	82
-	1	1	1	3-21000-4	SCR,SHC(10-32x.38)SG ADJ BL	81
-	REF	REF	REF	3-21000-4	SCR,SHC(10-32x.38)PIVOT BLK	80
-						79
-						78
-	REF			45749-1	GUARD, WINDOW	77
-	REF			679532-1	INSERT, GUARD	76
-						75
-						74
-	1	1	1	690603-1	SPRING, ASSIST	73
-	1	1	1	23030-1	SCR,SHC(6-32x.25 SL)INS DISC	72
-	REF	REF	REF	458109-1	WASHER, SPECIAL	71
-	REF	REF	REF	690517-1	SPACER	70
-						69
-						68
-						67
-						66
-						65
-						64
-						63
-						62
-						61
-						60
-						59
-						58
-						57
-						56
-						55
-						54
-						53
-						52
-						51
-						50
-						49
-						48
-						47
-						46
-						45
-						44
-						43
-						42
-						41
-						40
-						39
-						38
-						37
-						36
-						35
-						34
-						33
-						32
-						31
-						30
-						29
-						28
-						27
-						26
-						25
-						24
-						23
-						22
-						21
-						20
-						19
-						18
-						17
-						16
-						15
-						14
-						13
-						12
-						11
-						10
-						9
-						8
-						7
-						6
-						5
-						4
-						3
-						2
-						1

QTY	REQD	PER	ASSY	PART NO	DESCRIPTION	ITEM NO
-	REF	REF	REF	22594-8	NUT,HEX(1/2-20)	70
-	REF	REF	REF	240628-1	PLATE, ADJUSTMENT	69
-	REF	REF	REF	240626-1	SHAFT, PIVOT	68
-	REF	REF	REF	240633-1	BUSHING	67
-	REF	REF	REF	455680-1	LEVER, INTERMEDIATE	66
-	REF	REF	REF	240629-1	BLOCK, PIVOT	65
-	REF	REF	REF	240632-2	SCREW, ADJ FEED ROD	64
-	REF	REF	REF	240659-3	PIN, CAM ROLLER	63
-	REF	REF	REF	240658-1	ROLLER, CAM	62
-	REF	REF	REF	454398-2	ROD, FEED	61
-	REF	REF	REF	454178-1	GUIDE, FEED ROD	60
-	REF	REF	REF	454220-1	CAP, RAM	59
-	REF	REF	REF	454485-1	HOUSING	58
-						57
-	1	1	1	458537-2	PAWL, FEED	56
-	REF	REF	REF	240624-1	PIN, FEED FINGER	55
-	REF	REF	REF	691499-1	SPRING, FEED FINGER	54
-	REF	REF	REF	690541-1	HOLDER, FEED FINGER	53
-	REF	REF	REF	455679-1	LEVER, TERMINAL FEED ARM	52
-	1	1	1	811242-2	BUMPER, HOLDDOWN	51
-	1	1	1	690753-1	SPACER, TONKER	50
-	1			690602-6	CAM, PRE-FEED 1 5/8 ST	49
-				690602-5	CAM, PRE-FEED 1 1/8 ST	48
-				690501-4	CAM, POST-FEED 1 5/8 ST	47
-	1	1	1	459456-1	APPLICATOR, BASIC (SUBASSY)	46
-	1	1	1	690191-1	PLUG, NYLON	45
-	1	1	1	455673-1	RAM	44
-	1	1	1	690125-1	WASHER, LAMINATED	43
-	1	1	1	1-690124-4	WASHER, RAM	42
-	1	1	1	7-21002-9	BOLT, CRIMPER(5/16x1.00)	41
-	1	1	1	23241-6	BALL, STEEL	40
-	1	1	1	690170-1	SPRING, COMPRESSION	39
-	1	1	1	690142-1	DISC, INSULATION	38
-	1	1	1	354777-1	WIRE DISC, PLASTIC	37
-	1	1	1	22480-5	WASHER, SPRING	36
-	1	1	1	690212-1	POST, RAM	35
-	1	1	1	690786-3	SUPPORT, TERMINAL	34
-	REF	REF	REF	455675-1	PLATE, BASE	33
-	1	1	1	690432-3	SCREW, ADJUSTMENT	32
-						31
-	REF	REF	REF	455689-1	BLOCK, STRIP GUIDE ADJ	30
-	1	1	1	455671-1	PLATE, STRIP GUIDE	29
-	1	1	1	1-455888-0	SPACER, FRONT SHEAR DEP	28
-	2	2	2	1-22284-0	SPRING, DRAG	27
-	1	1	1	690546-1	LEVER, DRAG RELEASE	26
-	1	1	1	679754-1	DRAG, TERMINAL	25
-	1	1	1	6-690504-3	GUIDE, STRIP (REAR)	24
-	1	1	1	690438-1	GUIDE, STRIP (FRONT)	23
-						22
-						21
-	REF	REF	REF	4-22284-9	SPRING, FEED RETURN	20
-	1	1		691353-1	STRIPPER	19
-						18
-						17
-	1	1	1	691667-1	GUARD, CHIP (FRONT)	16
-						15
-						14
-						13
-	1	1	1	3-22280-3	SPRING, SHEAR	12
-	1	1	1	690461-1	STOP, SHEAR	11
-	1	1	1	690459-1	HOLDER, SHEAR (FRONT)	10
-	1	1	1	462006-1	SHEAR, FLOAT (FRONT)	9
-	1	1	1	1-803653-1	ANVIL	8
-						7
-						6
-						5
-	1	1	1	2-455889-0	DEPRESSOR, SHEAR (FRONT)	4
-	1	1	1	238011-7	SPACER, BLOCK CRIMPER	3
-	1	1	1	2-456134-2	CRIMPER, INSULATION	2
-	1	1	1	455888-1	SPACER, CRIMPER	1
-	1	1	1	2-1633730-4	CRIMPER, WIRE	1



- 1 RECOMMENDED SPARE PARTS.
- 2 GREASE LIGHTLY.
- 3 GUARD MUST BE IN PLACE WHEN OPERATING APPLICATOR IN A BENCH MACHINE.
- 4 LUBRICATE DAILY USING NO. 20 MACHINE OIL.
- 5. ITEMS WITH QTY OF REF SPECIFIED (EXCEPT ITEMS 78 AND 79) ARE USED ON ITEM 46.
- 6 FOR SINGLE WIRES: .126-.146
- 7 FOR TWO WIRES: .138-.157

LOC A	DIST 66
LEADMAKER & BENCH MACHINE	

114-13089 IS FOR SEAL APPLICATION ONLY. "F" TYPE INSULATION CRIMP IS USED AT A REDUCED INSULATION PAD SETTING FOR SEAL APPLICATIONS.

APVD	DATE	DATE	DATE	DATE	DATE	DATE	DATE	DATE	DATE
T	ECR-11-008753	4-2011	MY	GB	ANGLS#	0	1	2	3
P	LTR	REVISION RECORD	DATE	OWN	APVD	SURFACE TEXTURE	✓		

TE Connectivity

SCALE: A1 DRAWING NO: 567067 SHEET 1 of 1 REV T

GUSTOMER ACCESSIBLE PRODUCTION DRAWING

THIS DRAWING IS A CONTROLLED DOCUMENT.