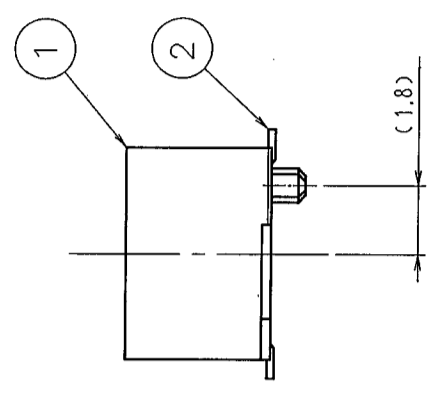
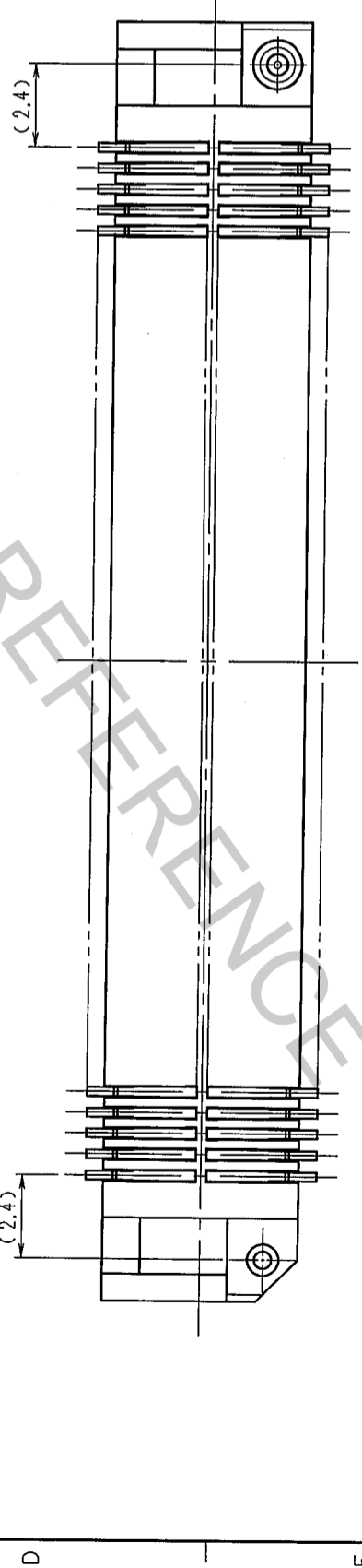
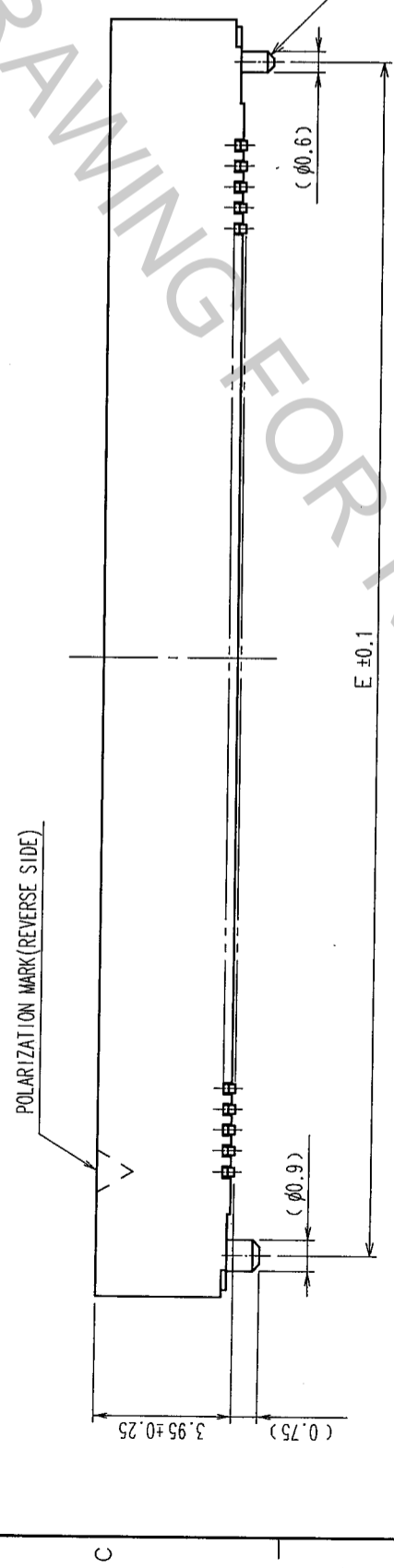
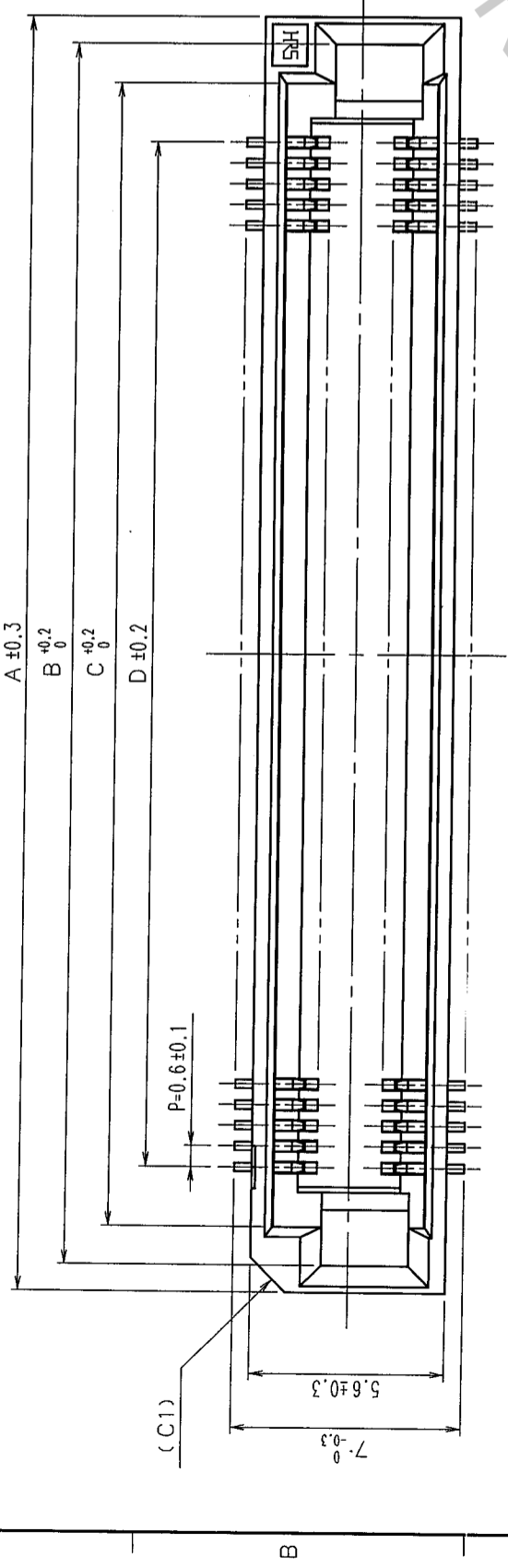


COUNT	DESCRIPTION OF REVISIONS	BY	CHKD	DATE	COUNT	DESCRIPTION OF REVISIONS	BY	CHKD	DATE



CL No.	PART No.	A	B	C	D	E
CL578-0801-2-91	FX8C-60S-SV(91)	24.6	23.05	20.8	17.4	22.2
CL578-0803-8-91	FX8C-80S-SV(91)	30.6	29.05	26.8	23.4	28.2
CL578-0805-3-91	FX8C-100S-SV(91)	36.6	35.05	32.8	29.4	34.2
CL578-0806-6-91	FX8C-120S-SV(91)	42.6	41.05	38.8	35.4	40.2
CL578-0807-9-91	FX8C-140S-SV(91)	48.6	47.05	44.8	41.4	46.2

1	POLYPHENYLENE SULFIDE	LIGHT BROWN	UL94V-0	2	PHOSPHOR BRONZE	CONTACT AREA : GOLD 0.1μm min. MOUNTING AREA : GOLD FLASH
NO.	MATERIAL	FINISH, REMARKS	NO.	MATERIAL	FINISH, REMARKS	UNDER PLATING : NICKEL 1.5μm min.
CODE NO. (OLD)			DESIGNED	CHECKED	APPROVED	RELEASED
			DRAWN			
			T. Noda	H. Okawa	H. Okawa	
			'05.03.16	'05.03.16	'05.03.16	
DRAWING NO.	PART NO.					
EDC3-151022-21	FX8C-※S-SV(91)					
SCALE	CODE NO.					
5 : 1	HIROSE ELECTRIC CO., LTD					
UNITS	CL578					
mm						

- NOTE 1 LEAD CO-PLANARITY SHALL BE 0.1 mm MAX.  
 2 FOR DETAILS, SEE THE SECTION CONCERNING THE DELIVERY FORM ON NEXT PAGE.  
 3 FOR MODIFICATION, ETC., PREVENTIVE HOLE FOR SINK MARK MAY BE ADDED DEPENDS ON CIRCUMSTANCES.  
 4 THE DIMENSIONS IN PARENTHESES ARE FOR REFERENCE.

TO	
PCK	

