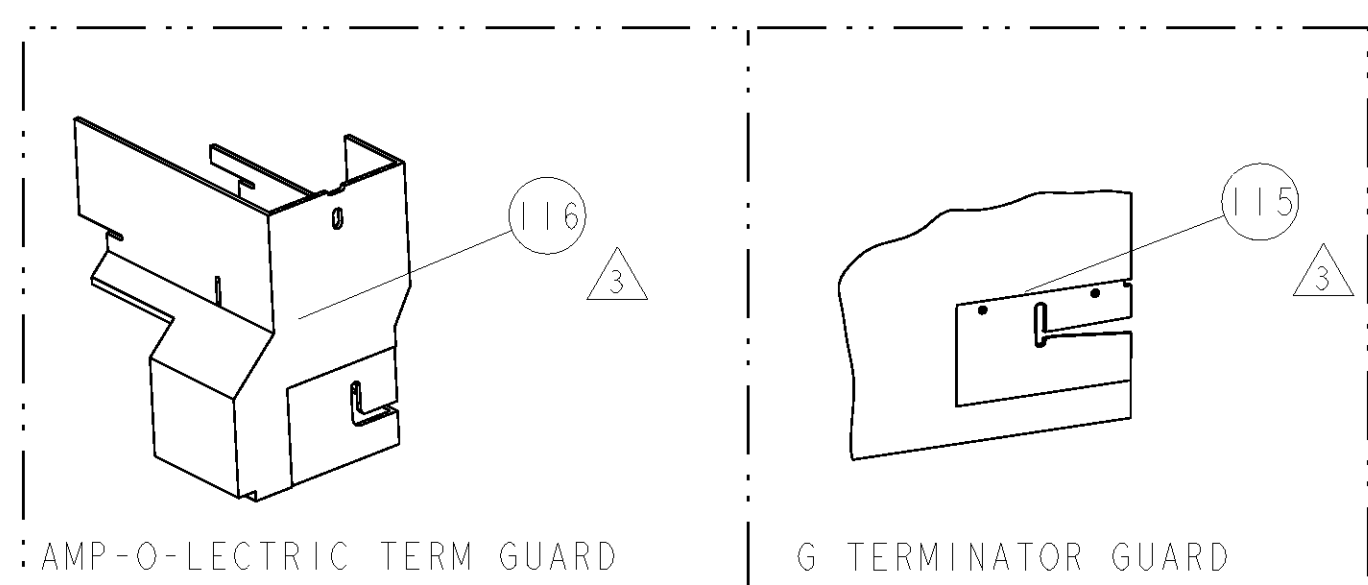


PART NUMBER	REV	FIRST USED	POWER UNIT	FEED TYPE	DESCRIPTION
1855598-1	A	122500-1	LEADMAKER	AIR FEED	CUTS CARRIER
1855598-2	A	565435-5	BENCH MODEL K	AIR FEED	CUTS CARRIER
1855598-3	A	354500-1	BENCH MODEL G	AIR FEED	CUTS CARRIER
1855598-6	A	122500-1	LEADMAKER	AIR FEED	CONTINUOUS CARRIER
7-1855598-7	A	-	-	-	SPARE PARTS

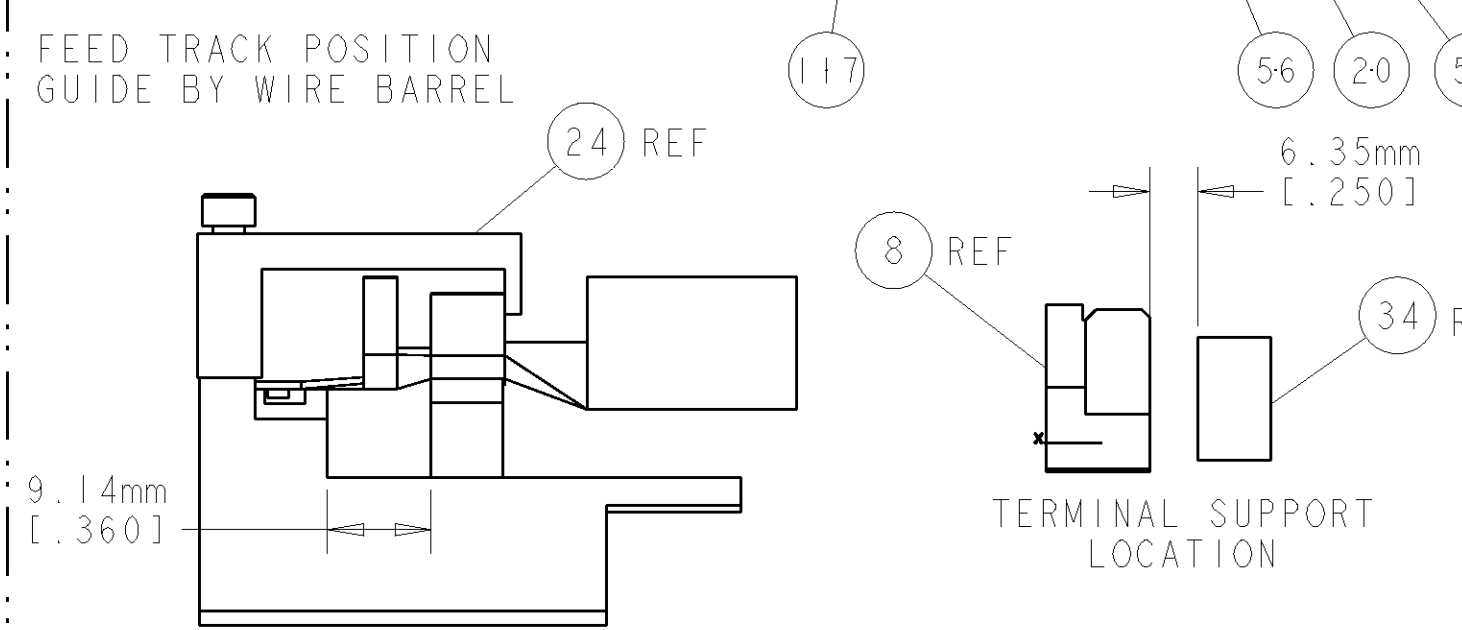
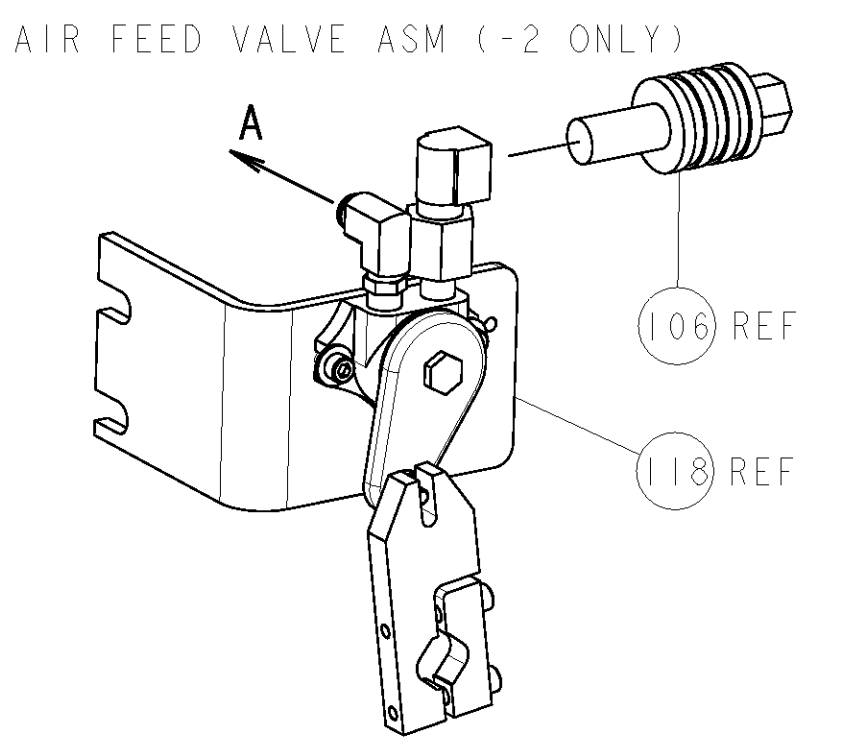
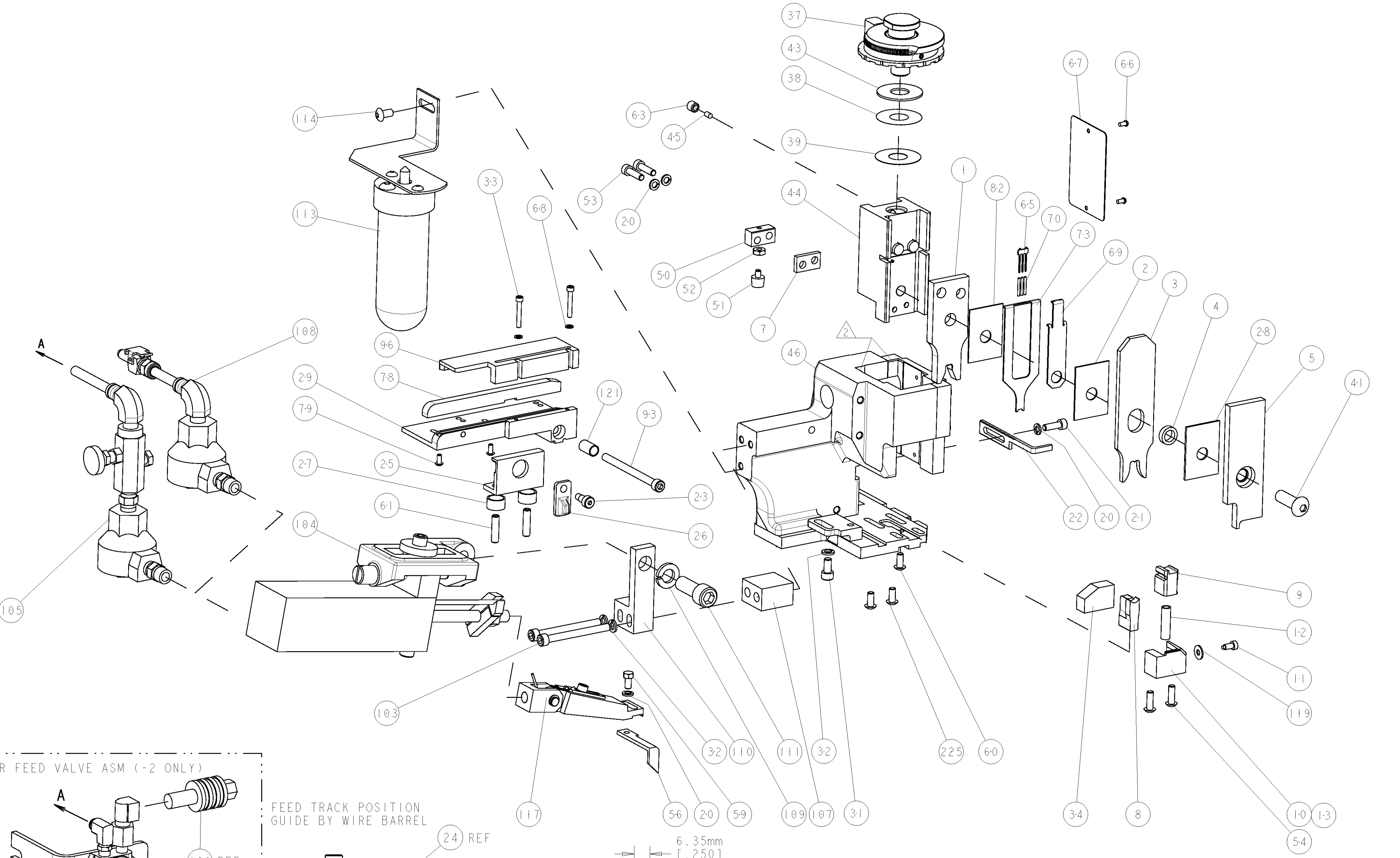


TERMINAL NAME: AMP MCP 9.58 FLAT TYPE RECEPTACLE, SWS			
TE PN	TE TERMINAL - TE CRIMP SPECS	REF SETTING	
967588			
	CRIMP HEIGHT	WIRE SIZE	REF SETTING
	3.84mm+ .05/- .05 [.151+ .002/- .002]	10mm2	A0
	3.22mm+ .05/- .05 [.127+ .002/- .002]	6mm2	E7
CRIMP	SIZE	TYPE	RANGE
WIRE	5.08mm [.200]	F	6-10 mm2
INSUL	7.62mm [.300]	F	∅4.600 - 6.600
WIRE STRIP LENGTH	9.70-10.30	TERM APPL SPEC	114-18269
		FEED	32.50
		APPLICATOR INSTRUCTIONS	408-8040
		SET UP GAGE	458637-1

LOC	DIST	REV	DATE	BY	APPV
A	66	1	02NOV2010	RRK	TE

- △ RECOMMENDED SPARE PARTS
- △ GREASE LIGHTLY
- △ GUARD MUST BE IN PLACE WHEN OPERATING APPLICATOR IN A BENCH MACHINE

*** WARNING**
ON INSTALLATION, SET WIRE DISC TO LARGEST WIRE SIZE SETTING. USE OF SETTINGS BELOW MIN. REQUIRED CRIMP HEIGHT SETTING WILL CAUSE DAMAGE TO CRIMP TOOLING.



QTY	REF	DESCRIPTION	ITEM NO
1	115	INSERT, GUARD	115
1	114	SCR, BTN SKT HD CAP 10-32 X .375	114
1	113	LUBRICATOR ASSY	113
1	111	SCR, SKT HD CAP 3/8-16 X 1.000	111
1	110	MOUNT, FEED BRACKET	110
1	109	WASHER, SPRG LOCK, REG 3/8	109
1	108	AIR FEED VALVE ASSEMBLY	108
1	107	SPACER, AIR FEED	107
1	106	VALVE, SHUT OFF	106
1	105	AIR FEED VALVE ASSEMBLY	105
1	104	ASSEMBLY, AIR FEED	104
2	103	SCR, SKT HD CAP 10-32 X 2.000	103
1	96	GUIDE, FRONT STRIP	96
1	93	SCR, SKT HD CAP 10-32 X 2.500	93
1	82	SPACER, CRIMPER	82
2	79	SCR, BTN SKT HD CAP 4-40 X .250	79
1	78	FENCE	78
1	73	DEPRESSOR, WIRE	73
1	72	SF APPL INST 408-8040	72
1	71	GENERAL INSTRUCTION PKG	71
3	70	SPRING, COMPRESSION	70
1	69	DEPRESSOR, SPACER	69
2	68	WASHER, SPRG LOCK, REG NO 4	68
1	67	PLATE, IDENTIFICATION	67
2	66	SCREW, DRIVE	66
1	65	HOLDER, PIN, WIRED	65
1	63	SCR, SET, SELF LOCKING 1/4-20 X .250	63
2	61	SCR, SET, CUP POINT 10-32 X .750	61
1	60	SCR, BHSC, SELF-LOCKING, 8-32 X .375	60
1	59	SCR, HEX HD CAP 8-32 X .312	59
1	56	FEED PAWL	56
2	54	SCR, BTN SKT HD CAP 8-32 X .500	54
2	53	SCR, SKT HD CAP 8-32 X .625	53
1	52	NUT, HEX, REG 6-32	52
1	51	BUMPER, HOLD DOWN	51
1	50	SPACER, TONKER	50
1	46	APPL., BASIC AIR FEED SUB ASSY	46
1	45	PLUG, NYLON	45
1	44	RAM, SIDE FEED	44
1	43	SHIM	43
1	41	SCR, BTN SKT HD CAP 5/16-24 X 1.00	41
1	39	SHIM SUB-ASSY	39
1	38	SHIM	38
1	37	FINE ADJUST HEAD ASSEMBLY	37
1	34	TERMINAL SUPPORT	34
2	33	SCR, SKT HD CAP 4-40 X .750	33
3	32	WASHER, SPRG LOCK, REG NO 10	32
1	31	SCR, SKT HD CAP 10-32 X .375	31
1	29	PLATE, STRIP GUIDE	29
1	28	SPACER, CRIMPER	28
2	27	SPRING, COMPRESSION	27
1	26	LEVER, DRAG RELEASE	26
1	25	DRAG, TERMINAL	25
1	23	SCR, SKT HD SHLDR 3/16 DIA X .250	23
1	22	STRIPPER	22
1	21	SCR, SKT HD CAP 8-32 X .500	21
4	20	WASHER, SPRG LOCK, REG NO 8	20
1	13	SHEAR HOLDER, FRONT (NO CUT)	13
1	12	SPRING, COMPRESSION	12
1	11	STOP, SHEAR	11
1	10	SHEAR HOLDER, FRONT	10
1	9	FLOATING SHEAR, FRONT	9
1	8	ANVIL, COMBINATION	8
1	7	SPACER	7
1	6		6
1	5	DEPRESSOR, SHEAR	5
1	4	BLOCK, CRIMPER SPACER	4
1	3	CRIMPER, INSULATION PREMIUM	3
1	2	SPACER, CRIMPER	2
1	1	CRIMPER, WIRE	1

QTY	REF	DESCRIPTION	ITEM NO
2	2	2-21002-1 SCR, BTN SKT HD CAP 8-32 X .375	225
1	1	1-22281-8 SPRING, COMPRESSION	121
1	1	21055-5 WASHER, FLAT, REG NO 6	119
1	1	692655-6 AIR FEED VALVE ASSEMBLY	118
1	1	461062-1 FEED FINGER ASSEMBLY	117
1	1	455749-1 GUARD WINDOW	116

DIMENSIONS:		TOLERANCES UNLESS OTHERWISE SPECIFIED:	
INCHES		9 PLC ± .01	
		3 PLC ± .001	
		4 PLC ± .0001	
		ANGLES ± .0001	

DATE	BY	APPV	NAME
21SEP2010	DR. KNEPPER	03NOV2010	T. ELBIN
		03NOV2010	L. CRUZ

PRODUCT SPEC	APPLICATION SPEC	WEIGHT	SIZE	CAGE CODE	DRAWING NO	RESTRICTED TO
			A1	00779	1855598	

CUSTOMER ACCESSIBLE PRODUCTION DRAWING SCALE 3:5 SHEET 1 OF 1 REV A