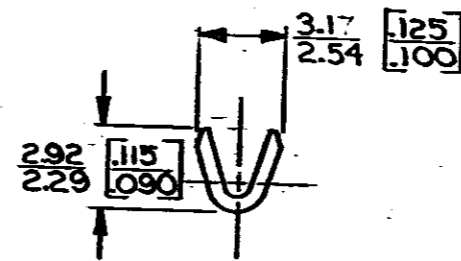
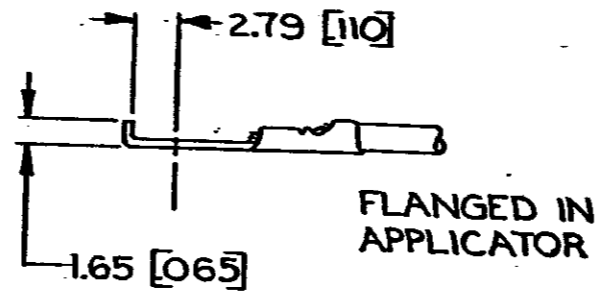
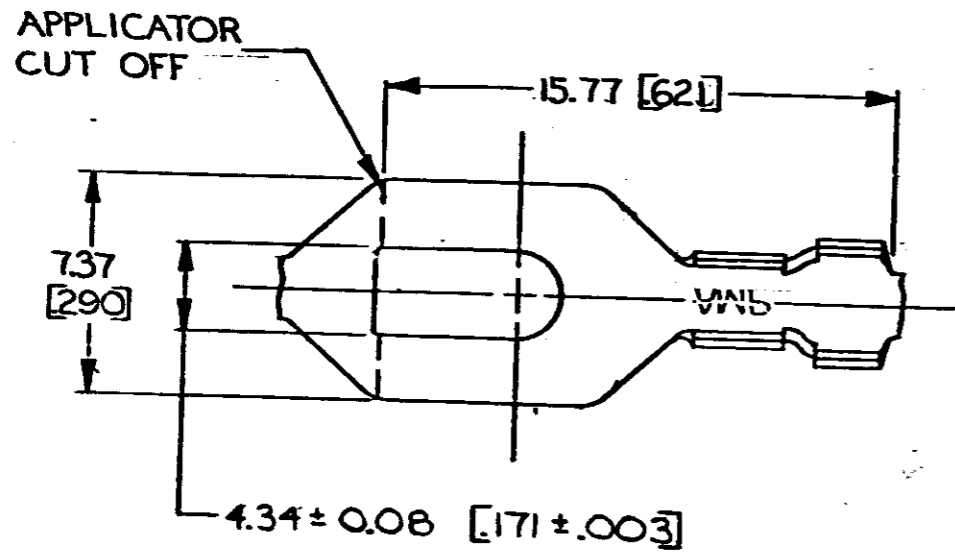
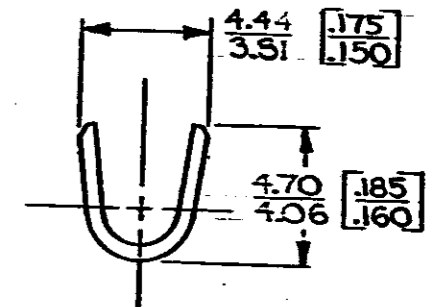


© COPYRIGHT 1964 BY AMP INCORPORATED, HARRISBURG, PA.
 ALL INTERNATIONAL RIGHTS RESERVED. AMP INCORPORATED PRODUCTS
 COVERED BY U. S. AND FOREIGN PATENTS AND/OR PATENTS PENDING.

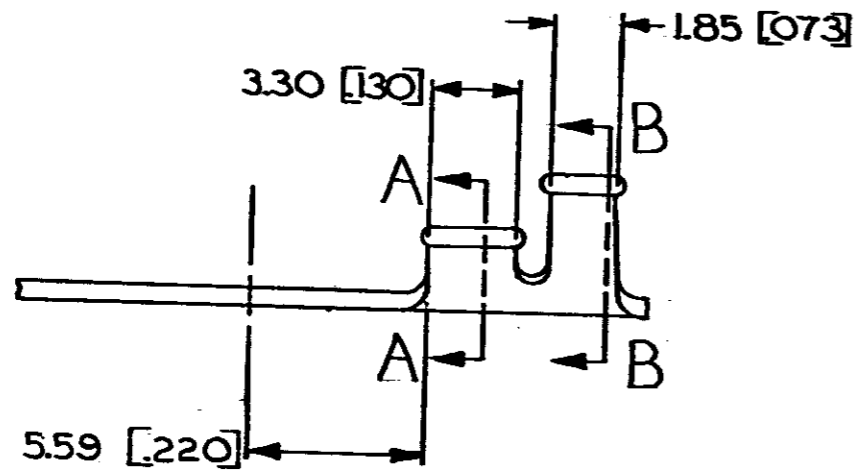
		REVISIONS			LOC	DIST
P	F	ZONE	LTR	DESCRIPTION	DATE	APPROVED
	✓		L	REDRAWN & REVISED A-3943	5-15-78	SS/



SECT. A-A



SECT. B-B



M 4 #8	0.2-0.6 mm ² [24-20]	2.03-2.54 [080-.100]	TIN	0.51 [020] BRASS	41589-A
STUD SIZE	WIRE RANGE	INSULATION RANGE	FINISH	MATERIAL	41589
					PART NO

UNLESS OTHERWISE SPECIFIED DIMENSIONS ARE IN INCHES mm TOLERANCES ON: DECIMALS ±0.38 [015] ANGLES ±1°

CONTRACT NO
 DR J. Magano 5-15-78
 CHK [Signature] 7/25/78



MATERIAL
 SEE TABLE

APPD R.P. Frantz 8-1-78
 APPD [Signature] 8-1-78

NAME
SPADE

FINISH
 SEE TABLE

DSGN APPD
 OTHER APPD

SIZE **B** CODE IDENT NO **00779** DRAWING NO **41589**

METRIC

1. CONTINUOUS STRIP ON REELS.
 2. DIMENSIONS IN BRACKETS ARE IN INCHES.
- △ SUFFIX LETTER MUST BE USED ONLY WHEN ORDERING APPLICATOR TOOLING.