

| APPLICABLE STANDARD |                             |  |                           |  |
|---------------------|-----------------------------|--|---------------------------|--|
| RATING              | OPERATING TEMPERATURE RANGE | -40°C TO 85°C                                    | STORAGE TEMPERATURE RANGE | -40°C TO 60°C                          |
|                     | VOLTAGE                     | 125 V AC   | OPERATING HUMIDITY RANGE  | 5 %RH TO 95 %RH                        |
|                     | CURRENT                     | No.2 TO No.17 : 0.5 A<br>No.1 AND No. 18 : 1.5 A | APPLICABLE CABLE          | JACKET DIAMETER $\phi$ 6 MAX<br>AWG 28 |

### SPECIFICATIONS

| ITEM | TEST METHOD | REQUIREMENTS | QT | AT |
|------|-------------|--------------|----|----|
|------|-------------|--------------|----|----|

#### CONSTRUCTION

|                     |                                       |                       |   |   |
|---------------------|---------------------------------------|-----------------------|---|---|
| GENERAL EXAMINATION | VISUALLY AND BY MEASURING INSTRUMENT. | ACCORDING TO DRAWING. | X | X |
| MARKING             | CONFIRMED VISUALLY.                   |                       | X | X |

#### ELECTRIC CHARACTERISTICS

|                       |                         |                            |   |   |
|-----------------------|-------------------------|----------------------------|---|---|
| CONTACT RESISTANCE    | 100 mA (DC OR 1000 Hz). | 70 m $\Omega$ MAX.         | X | - |
| INSULATION RESISTANCE | 250 V DC.               | 1000 M $\Omega$ MIN.       | X | - |
| VOLTAGE PROOF         | 350 V AC FOR 1 min.     | NO FLASHOVER OR BREAKDOWN. | X | X |

#### MECHANICAL CHARACTERISTICS

|                                 |   |   |   |   |
|---------------------------------|---|---|---|---|
| INSERTION AND WITHDRAWAL FORCES | MEASURED BY APPLICABLE CONNECTOR.   | 25 N MAX.   | X | - |
| MECHANICAL OPERATION            | 20,000 TIMES INSERTIONS AND EXTRACTIONS.                                    | 1) AMOUNT OF CHANGE OF CONTACT RESISTANCE : 20m $\Omega$ MAX<br>2) NO DAMAGE, CRACK AND LOOSENESS OF PARTS.   | X | - |
| VIBRATION                       | FREQUENCY 10 TO 55 Hz SINGLE AMPLITUDE 0.75 mm, AT 2 h, FOR 3 DIRECTIONS.   | 1) NO ELECTRICAL DISCONTINUITY OF 10 $\mu$ s.<br>2) AMOUNT OF CHANGE OF CONTACT RESISTANCE : 20m $\Omega$ MAX | X | - |
| SHOCK                           | 490 m/s <sup>2</sup> DIRECTIONS OF PULSE 11 ms AT 3 TIMES FOR 3 DIRECTIONS. | 3) NO DAMAGE, CRACK AND LOOSENESS OF PARTS.   | X | - |

#### ENVIRONMENTAL CHARACTERISTICS

|   |  |  |   |   |
|---|--|--|---|---|
| DAMP HEAT (STEADY STATE)                    | EXPOSED AT 60°C , 90~95%, 96h  | 1) AMOUNT OF CHANGE OF CONTACT RESISTANCE : 20m $\Omega$ MAX   | X | - |
| RAPID CHANGE OF TEMPERATURE                 | TEMPERATURE -55 $\rightarrow$ 5-35 $\rightarrow$ +85 $\rightarrow$ 5-35 °C<br>TIME 30 $\rightarrow$ 2-3 $\rightarrow$ 30 $\rightarrow$ 2-3 min.<br>UNDER 5 CYCLES. | 2) INSULATION RESISTANCE: 1000 M $\Omega$ MIN. (AT DRY)<br>3) NO DAMAGE, CRACK AND LOOSENESS OF PARTS. |   |   |
| CORROSION SALT MIST                         | EXPOSED IN 5 % SALT WATER SPRAY FOR 48 h.  | NO HEAVY CORROSION.  | X | - |
| MIXED GAS CORROSION                         | EXPOSED IN SO <sub>2</sub> 10 ppm , H <sub>2</sub> S 3ppm<br>70 TO 80% R H, FOR 96 h   |  |   |   |
| RESISTANCE TO SOLDERING HEAT (REFLOW)       | REFROUW TWICE UNDER THERECOMMENDED REFROW TEMPERATURE PROFILE IN FIG-1   | NO SIGNIFICANT DEFOMATION OR LOSSENESS OF CONTACTS.  | X | - |
| RESISTANCE TO SOLDERING, SOLDER IRON METHOD | TEMPERATURE OF SOLDERING IRON : 390°C MAX, 3 sec MAX   | NO DAMAGE, CRACK AND LOOSENESS, OF PARTS.  | X | - |

|  |  |  |  |  |
|--|--|--|--|--|
|  |  |  |  |  |
|--|--|--|--|--|

| COUNT | DESCRIPTION OF REVISIONS | DESIGNED | CHECKED | DATE |
|-------|--------------------------|----------|---------|------|
|       |                          |          |         |      |

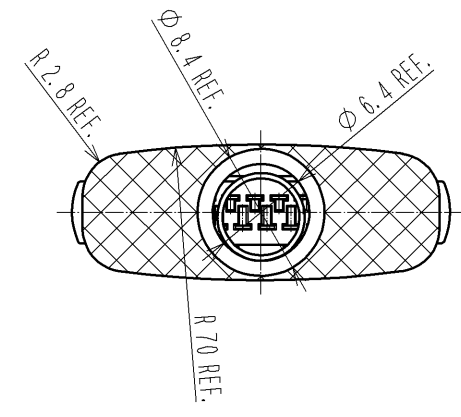
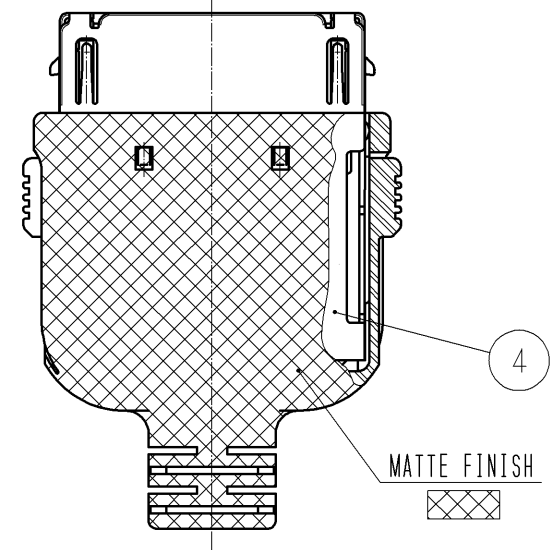
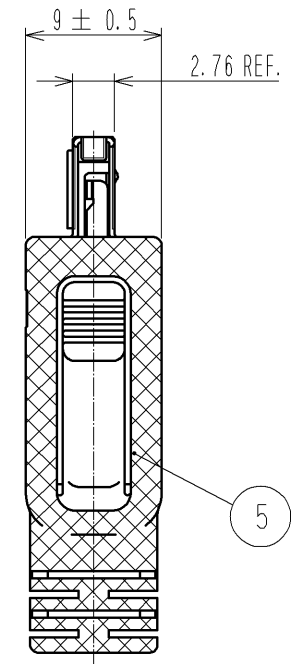
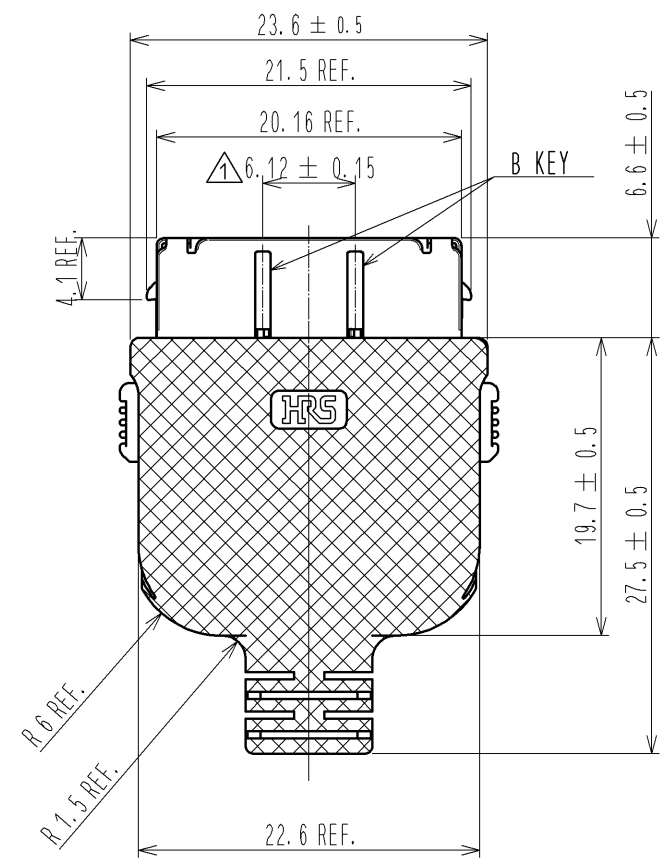
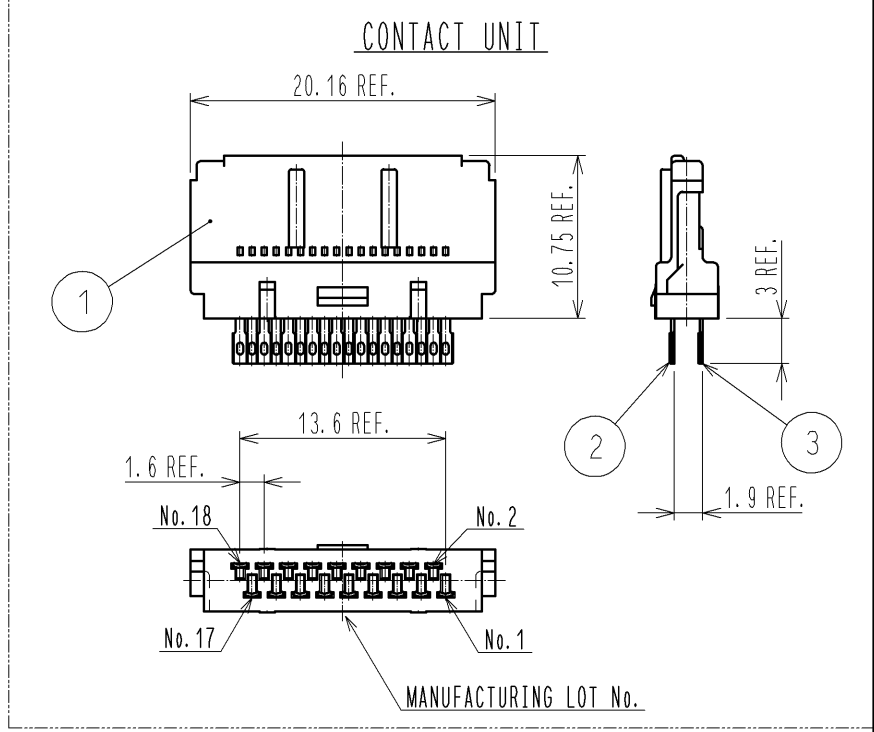
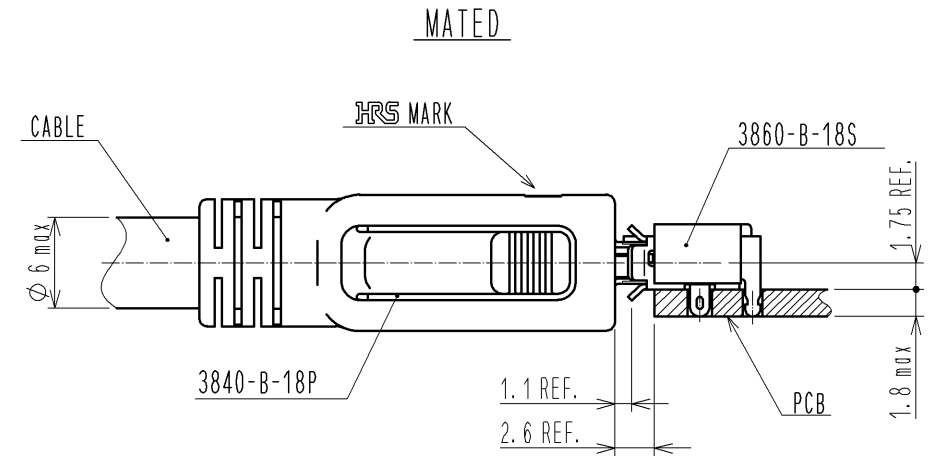
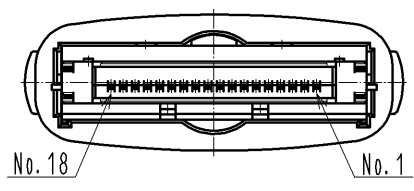
  

|        |          |              |            |
|--------|----------|--------------|------------|
| REMARK | APPROVED | NF. MIYAZAKI | 10. 03. 25 |
|        | CHECKED  | TA. ASO      | 10. 03. 25 |
|        | DESIGNED | KO. KAWAMURA | 10. 03. 25 |
|        | DRAWN    | KO. KAWAMURA | 10. 03. 25 |

Unless otherwise specified, refer to JIS C 5402.

|  |             |                |
|--|-------------|----------------|
| Note QT:Qualification Test AT:Assurance Test X:Applicable Test | DRAWING NO. | ELC4-127059-00 |
|--|-------------|----------------|

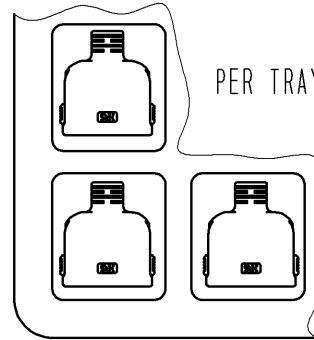
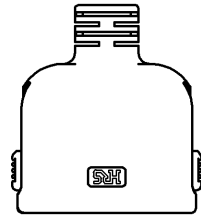
|  |                           |          |                 |     |
|--|---------------------------|----------|-----------------|-----|
|  | SPECIFICATION SHEET       | PART NO. | 3840-B-18P      |     |
|  | HIROSE ELECTRIC CO., LTD. | CODE NO. | CL238-2007-0-00 | 1/1 |



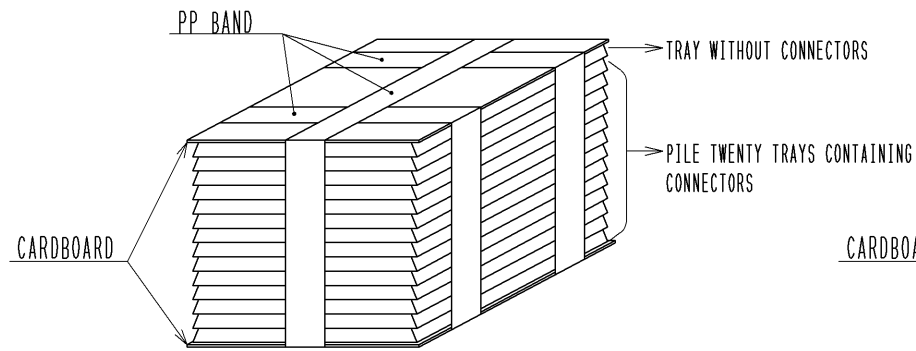
|                                  |              |                                    |                            |  |                          |
|----------------------------------|--------------|------------------------------------|----------------------------|--|--------------------------|
| 3                                | COPPER ALLOY | SELECTIVE GOLD PLATING 0.76 μm MIN |                            |  |                          |
| 2                                | COPPER ALLOY | SELECTIVE GOLD PLATING 0.76 μm MIN | 5                          | POLYCARBONATE                            | (BLACK) UL94V-0          |
| 1                                | PA           | (BLACK) UL94V-0                    | 4                          | STAINLESS STEEL                          |                          |
| NO.                              | MATERIAL     | FINISH . REMARKS                   | NO.                        | MATERIAL                                 | FINISH . REMARKS         |
| UNITS<br>mm                      |              | SCALE<br>2 : 1                     | COUNT<br>1                 | DESCRIPTION OF REVISIONS<br>DIS-E-003218 | DESIGNED<br>KO. KAWAMURA |
|                                  |              |                                    |                            |  | CHECKED<br>TA. ASO       |
|                                  |              |                                    |                            |  | DATE<br>10.04.02         |
| APPROVED : NF. MIYAZAKI 09.11.19 |              |                                    | DRAWING NO. EDC3-127059-00 |  |                          |
| CHECED : TA. ASO 09.11.18        |              |                                    | PART NO. 3840-B-18P        |  |                          |
| DESIGNED : KO. KAWAMURA 09.11.18 |              |                                    | CODE NO. CL238-2007-0-00   |  |                          |
| DRAWN : KO. KAWAMURA 09.11.18    |              |                                    |                            |  |                          |

# [ 3840-\*\*-18P PACKING SPECIFICATION ]

<HOOD>

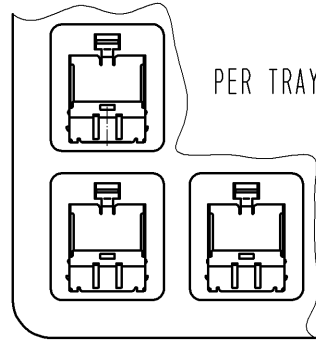
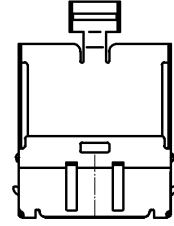


PER TRAY: 25 PCS MAX

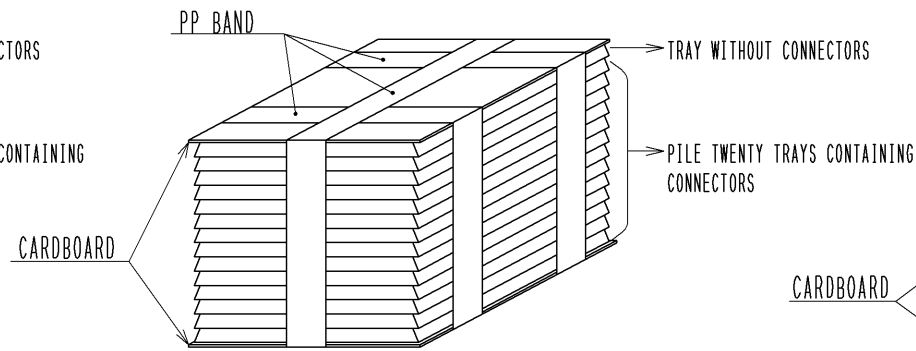


500 PCS MAX

<METAL SHELL>

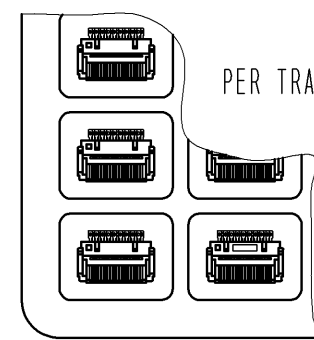
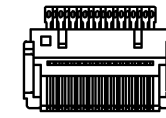


PER TRAY: 25 PCS MAX

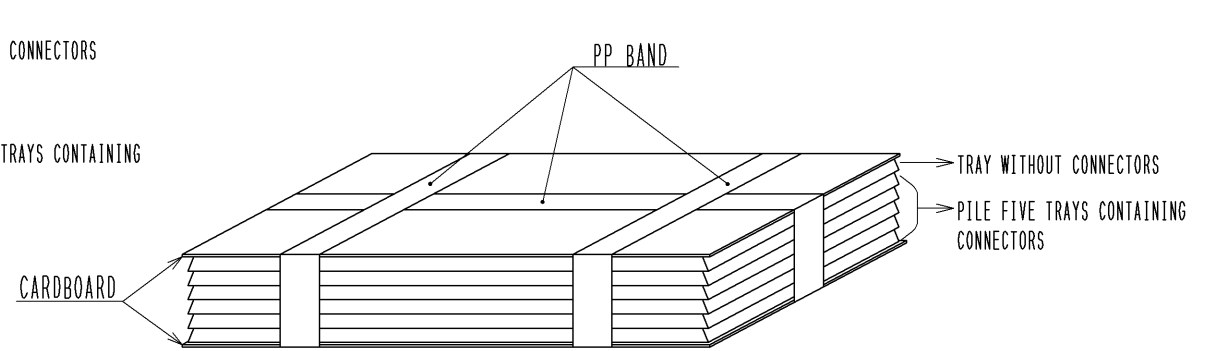


500 PCS MAX

<UNIT>

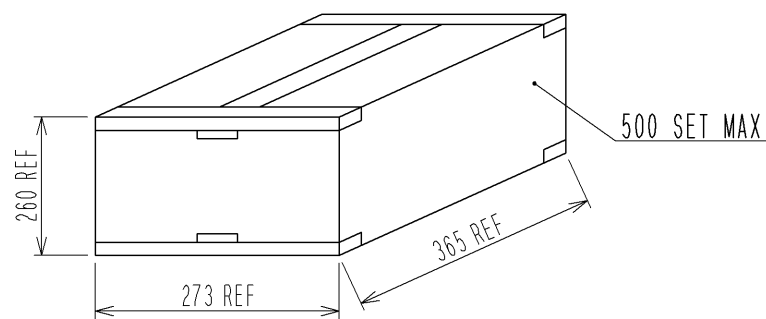


PER TRAY: 100 PCS MAX

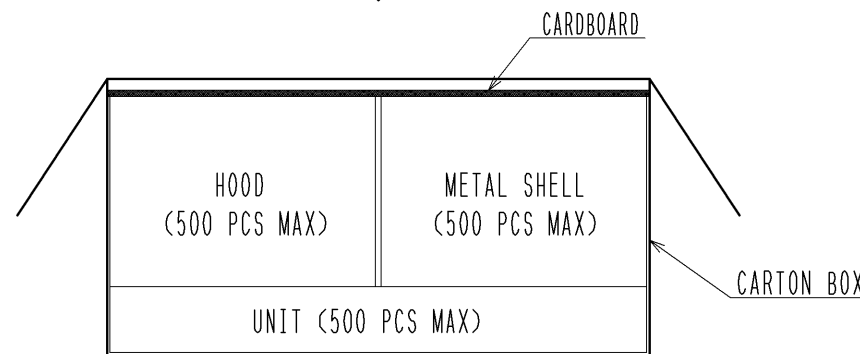


500 PCS MAX

## PACKING SPECIFICATION



500 SET MAX



|            |             |                 |  |
|------------|-------------|-----------------|--|
| <b>HRS</b> | DRAWING NO. | EDC3-127059-00  |  |
|            | PART NO.    | 3840-B-18P      |  |
|            | CODE NO.    | CL238-2007-0-00 |  |
|            |             |                 |  |