

THIS DRAWING IS UNPUBLISHED.

RELEASED FOR PUBLICATION

20

© COPYRIGHT 20

BY -

ALL RIGHTS RESERVED.

LOC
CE

DIST
16

REVISIONS

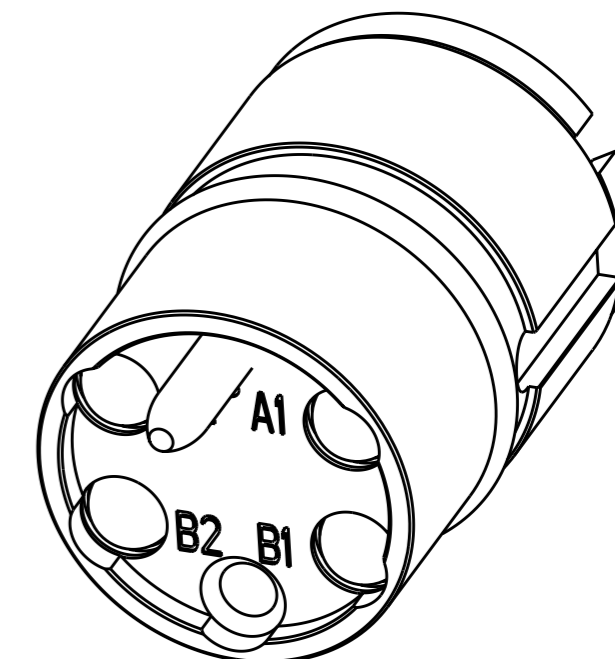
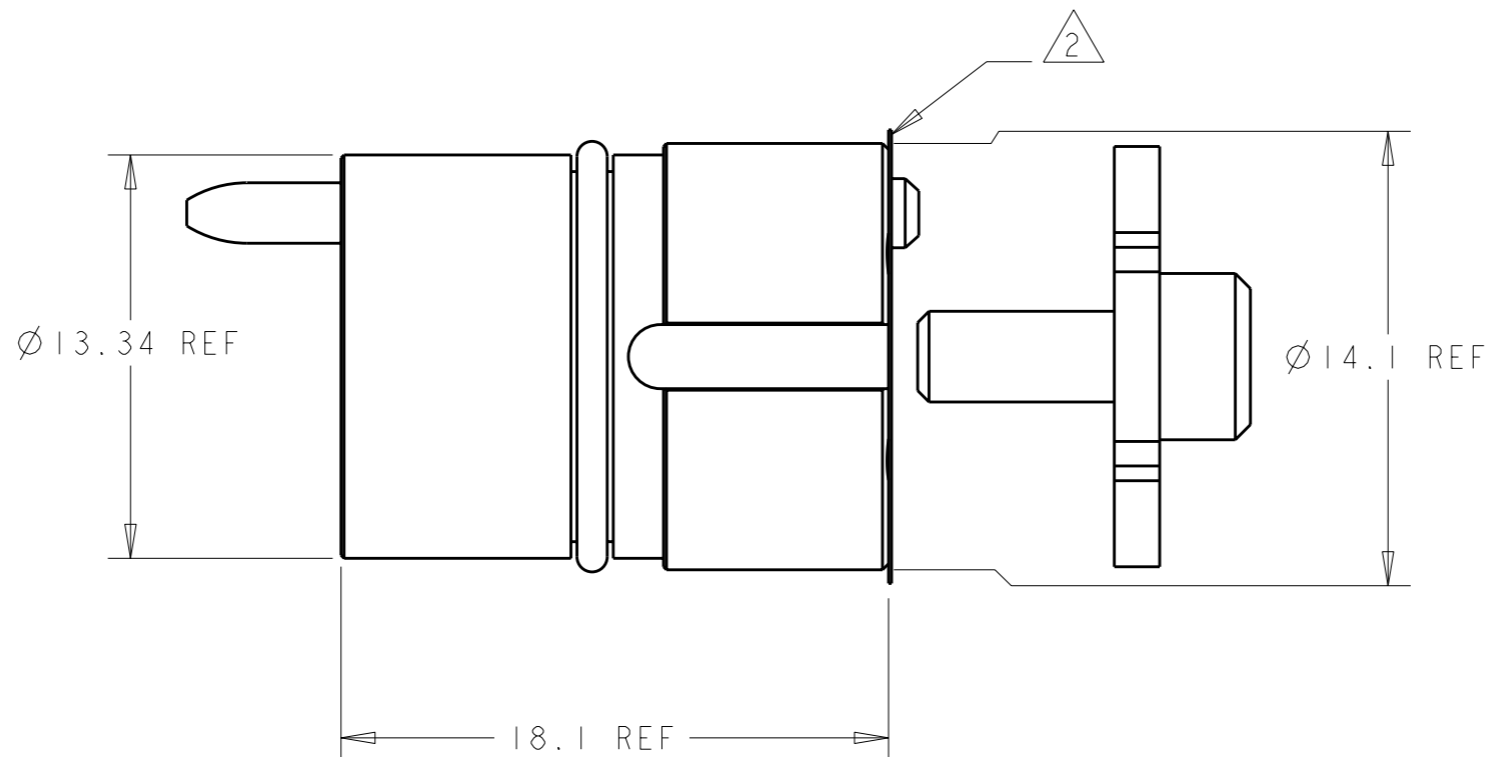
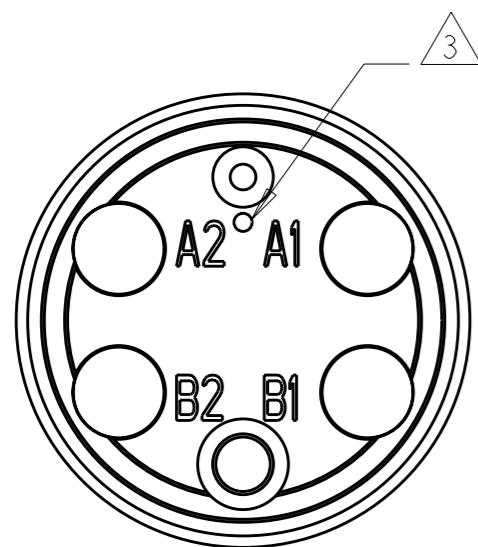
P	LTR	DESCRIPTION	DATE	DWN	APVD
	E	ECR-09-007414	02JUN2009	KG	DW

1. USE WITH FERRULE ASSEMBLY KIT P/N 1588908-2 (125um), OR 1588908-1 (126um). QUANTITY OF 4 REQUIRED. FERRULE MUST BE PC-POLISHED DURING FIBER TERMINATION FOR BEST PERFORMANCE.

2. PROTECTIVE LABEL APPLIED AFTER FINAL CLEAN ROOM TEST TO PREVENT OPTICAL CAVITY CONTAMINATION. REMOVE ONLY WHEN READY TO ASSEMBLE.


3. SINGLEMODE IDENTIFIER

4. THIS PRODUCT HAS NOT COMPLETED VALIDATION TESTING.



SCALE 4:1

4 CHANNEL, 1310nm SM	1515740-1
DESCRIPTION	PART NO.

THIS DRAWING IS A CONTROLLED DOCUMENT.		DWN E. HOPKINS 08OCT2002	 TE Connectivity	
DIMENSIONS: mm		CHK D. WERTMAN 08OCT2002		
TOLERANCES UNLESS OTHERWISE SPECIFIED:		APVD D. WERTMAN 08OCT2002	NAME INSERT ASSEMBLY, 4 CHANNEL, 1310nm SM, PRO BEAM JR.	
0 PLC ±- 1 PLC ±- 2 PLC ±- 3 PLC ±- 4 PLC ±- ANGLES ±-		PRODUCT SPEC -	SIZE A3	
MATERIAL STAINLESS ALLOYS & NBR		APPLICATION SPEC -	CAGE CODE 00779	DRAWING NO 1515740
FINISH N/A		WEIGHT -	RESTRICTED TO -	
		CUSTOMER DRAWING	SCALE 4:1	SHEET 1 OF 1
			REV E	