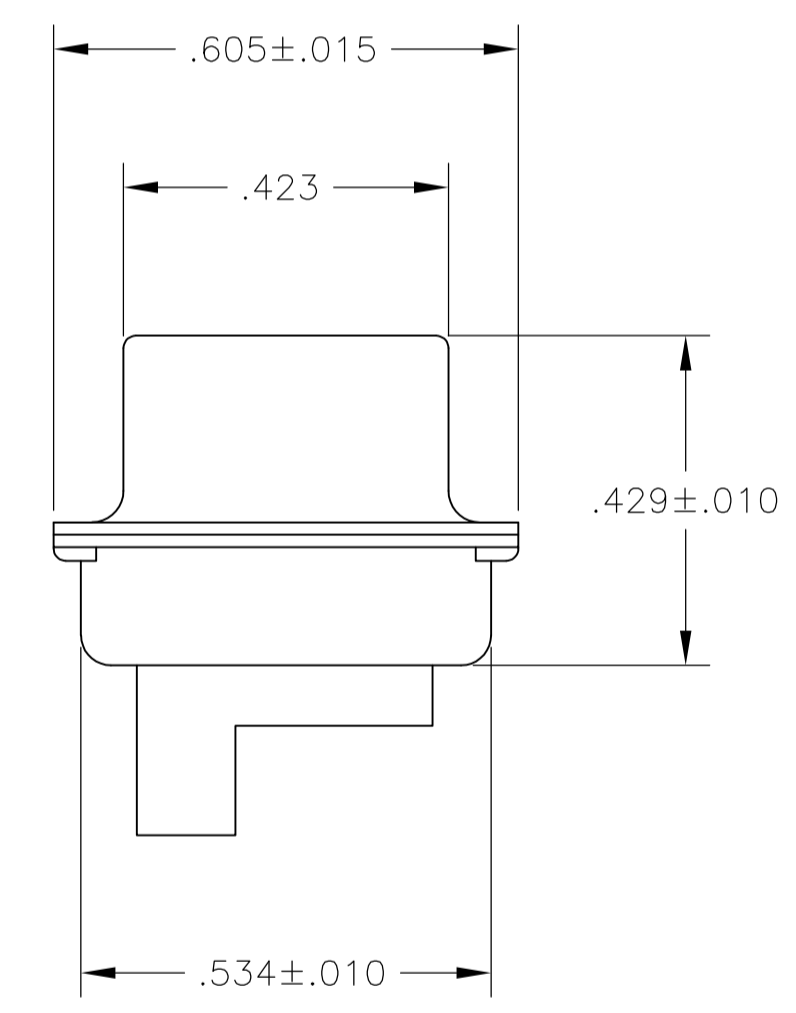
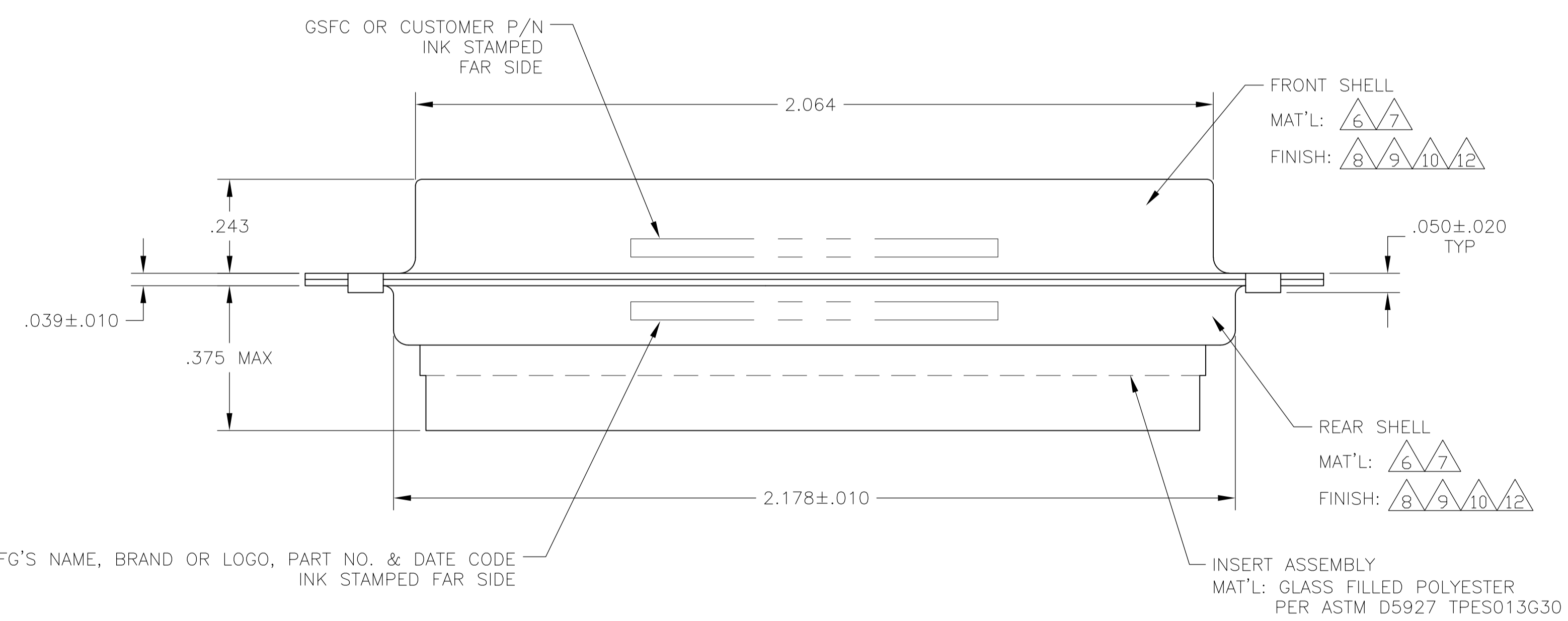
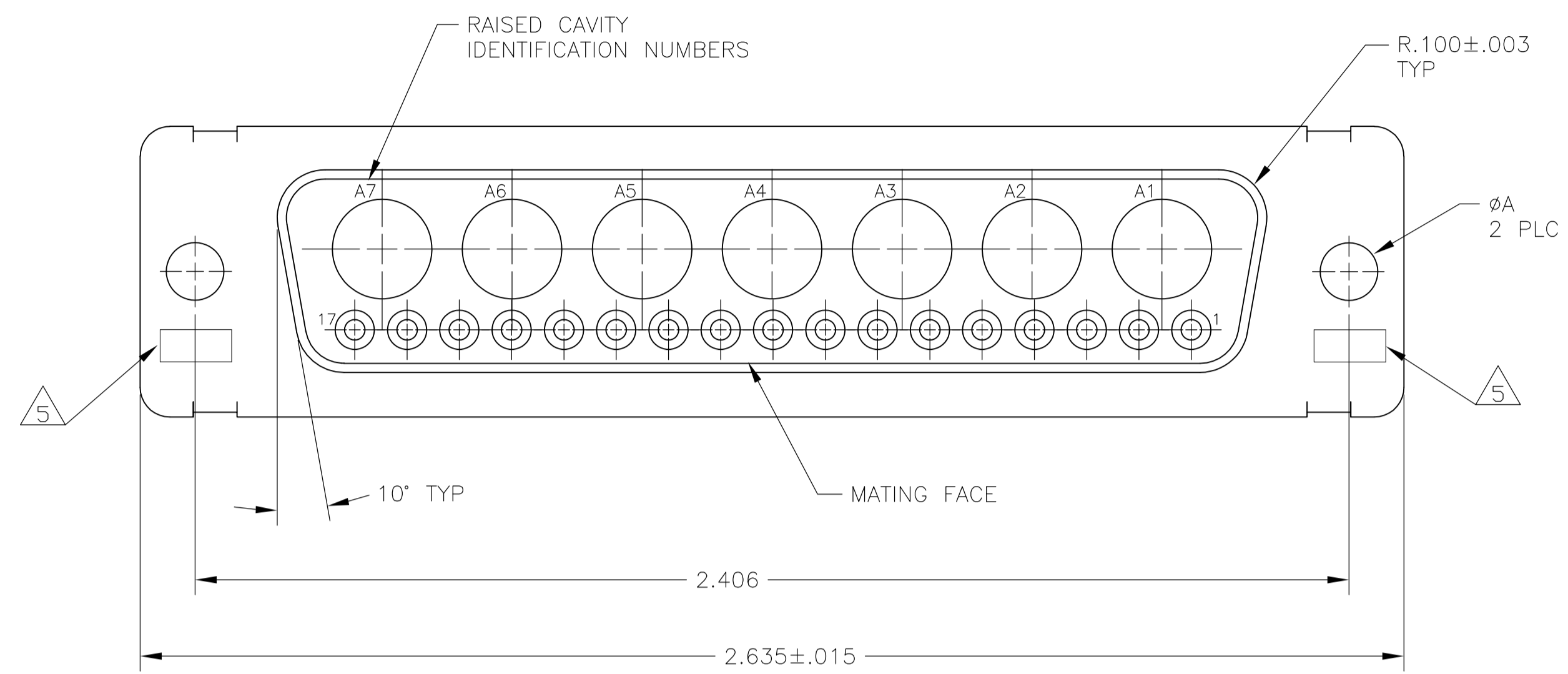


| LOC | | DIST | | REVISIONS | | | |
|-----|-----|-----------------------|---------|-----------|------|--|--|
| P | LTR | DESCRIPTION | DATE | DNW | APVD | | |
| S | | REV PER ECO 12-004104 | 16MAR12 | PY | RL | | |

- THIS RECEPTACLE WILL MATE WITH ANY 24C7, SIZE 5 PLUG IN AMPLIMITE SERIES.
 - MAXIMUM WIRE INSULATION TO BE USED WITH THIS RECEPTACLE IS ϕ .068.
 - THIS CONNECTOR ACCEPTS (7) POWER 8, OR COAX SOCKET CONTACTS IN POSITIONS A1 THRU A7, PURCHASED SEPARATELY.
 - THIS CONNECTOR ACCEPTS SIZE 20 SOCKET CONTACTS IN POSITIONS 1 THRU 17, PURCHASED SEPARATELY.
- 5 UL/CSA DESIGNATION STAMPED IN THIS AREA, OPTIONAL.
 - 6 MATERIAL: STEEL PER ASTM-A-109.
 - 7 MATERIAL: BRASS PER MIL-C-50 AND ASTM-B-36 UNS NO. C26000.
 - 8 FINISH: TIN PER ASTM-B-545 .000400 MIN THK OVER COPPER PER AMS2418 .000050 MIN THK.
 - 9 FINISH: CADMIUM PLATED PER QQ-P-416.
 - 10 FINISH: GOLD PER MIL-G-45204 TYPE II, GRADE C, CLASS 1 OVER COPPER PER MIL-C-14550, CLASS IV.
 - 11 INK STAMP WESTINGHOUSE PART NO. 97942-645A935H03, FAR SIDE.
 - 12 FINISH: ZINC PLATE PER ASTM-B-633, .000200-.000400 THK WITH SUPPLEMENTARY CHROMATE (Cr3+)



| | | | |
|---------|------|-------------------|------------|
| 6/8 | .120 | - | 5-208552-4 |
| 6/12 | .120 | - | 5-208552-1 |
| 6/9 | .120 | T5935-0103-006 | 208552-7 |
| 6/8 | .120 | - | 208552-6 |
| 7/10 | .154 | 311P405-22S-B-15 | 208552-5 |
| 6/8 | .120 | - | 208552-4 |
| 6/9/11 | .120 | 97942-645A935H03 | 208552-3 |
| 7/10 | .120 | 311P405-22S-B-12 | 208552-2 |
| 6/9 | .120 | - | 208552-1 |
| REMARKS | øA | CUSTOMER PART NO. | PART NO. |

THIS DRAWING IS A CONTROLLED DOCUMENT.

| | | | | | |
|--------------------|--|-------------------------|------------------------|---------------------|---------------|
| DIMENSIONS: INCHES | TOLERANCES UNLESS OTHERWISE SPECIFIED: | DIN T. SHUEY 07-JAN-88 | CHK A. EMADI 27-JAN-88 | TE Connectivity | |
| 0 PLC ± - | 1 PLC ± - | APVD A. EMADI 27-JAN-88 | NAME | RECEPTACLE ASSEMBLY | |
| 2 PLC ± - | 3 PLC ± .005(0.13) | PRODUCT SPEC | | AMPLIMITE 24C7 | |
| 4 PLC ± - | ANGLES ± # 0'30' | APPLICATION SPEC | | SIZE 5, COAX MIX | |
| MATERIAL | FINISH | SIZE | CAGE CODE | DRAWING NO. | RESTRICTED TO |
| - | - | A1 | 00779 | 208552 | - |
| CUSTOMER DRAWING | | | SCALE 4:1 | SHEET 1 OF 1 | REV S |