

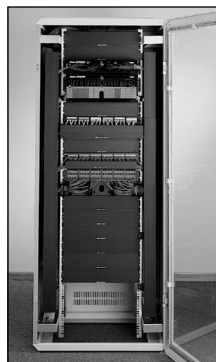
Panduit IN-Cabinet Cable Management System

PANDUIT®

SPECIFICATION SHEET

specifications

Cabinet cable management systems shall include components to aid in routing, managing and organizing cable to and from equipment. Panels shall be a flexible design with adjustable mounting. Panels shall be constructed of steel bases with PVC duct attached. Duct fingers shall have score lines for easy removal.



technical information

Part Number	RU	Height in. (mm)	Width in. (mm)	Depth in. (mm)
CWMPV2418	18	31.4 (797)	1.95 (50)	3.76 (96)
CWMPV3418	18	31.4 (797)	2.94 (75)	3.76 (96)
CWMPV2440	40	70.8 (1825)	1.95 (50)	3.76 (96)
CWMPV3440	40	70.8 (1825)	2.94 (75)	3.76 (96)
CWMPV2318	18	32.0 (813)	2.25 (57)	3.00 (76)
CWMPV3318	18	32.0 (813)	3.25 (83)	3.00 (76)
CWMPV2340	40	70.0 (1778)	2.25 (57)	3.00 (76)
CWMPV3340	40	70.0 (1778)	3.25 (83)	3.00 (76)

key features and benefits

Universal design	Works with the majority of manufacturer's wider cabinet designs
Modular system	Provides a system solution that can be updated with minimal additional investment
System solution	Includes slotted finger duct and D-ring options for both vertical and horizontal cable management
High capacity	Manages and organizes a large number of cables
Multiple sizes	Designed to work in a variety of cabinet designs
Multiple adjustable mounting options	Allows use in various applications

applications

The Panduit IN-Cabinet System is designed to properly manage and organize patch cords and distribution cable within a cabinet. It provides a system solution including vertical and horizontal panel options. The IN-Cabinet System is designed to work with the majority of cabinet designs for maximum flexibility. Multiple sizes are also available to fit a variety of applications. The IN-Cabinet

System can be used with multimedia applications including UTP, ScTP, coax and fiber optic cables. It is a completely modular system for use with all Panduit® Pan-Net® Products for a high performance copper and fiber solution. The IN-Cabinet System also works with a variety of Panduit accessories for complete cable management flexibility.

Side Mount Vertical Panels

3" W x 4" D x 6' H:	CWMPV3440
2" W x 4" D x 6' H:	CWMPV2440
3" W x 4" D x 2.6' H:	CWMPV3418
2" W x 4" D x 2.6' H:	CWMPV2418

Front Mount Vertical Panels

3" W x 3" D x 6' H:	CWMPV3340
2" W x 3" D x 6' H:	CWMPV2340
3" W x 3" D x 2.6' H:	CWMPV3318
2" W x 3" D x 2.6' H:	CWMPV2318

Patchlink Horizontal Cable Managers

2 RU front and rear:	WMP1E
2 RU front only:	WMPF1E
1 RU front and rear:	WMPSE
1 RU front only:	WMPFSE

NetManager® Horizontal Cable Managers

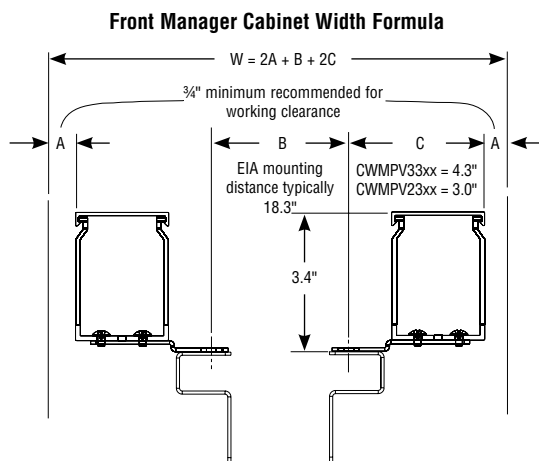
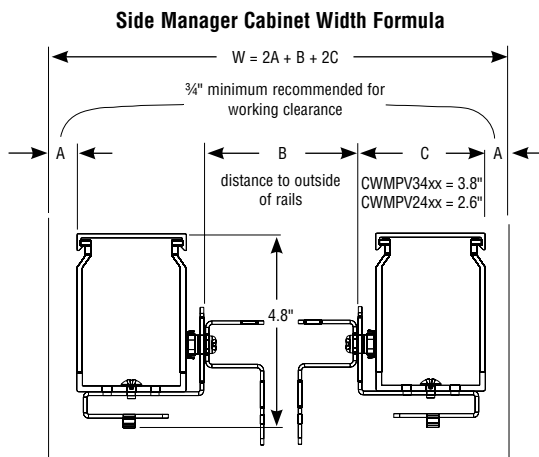
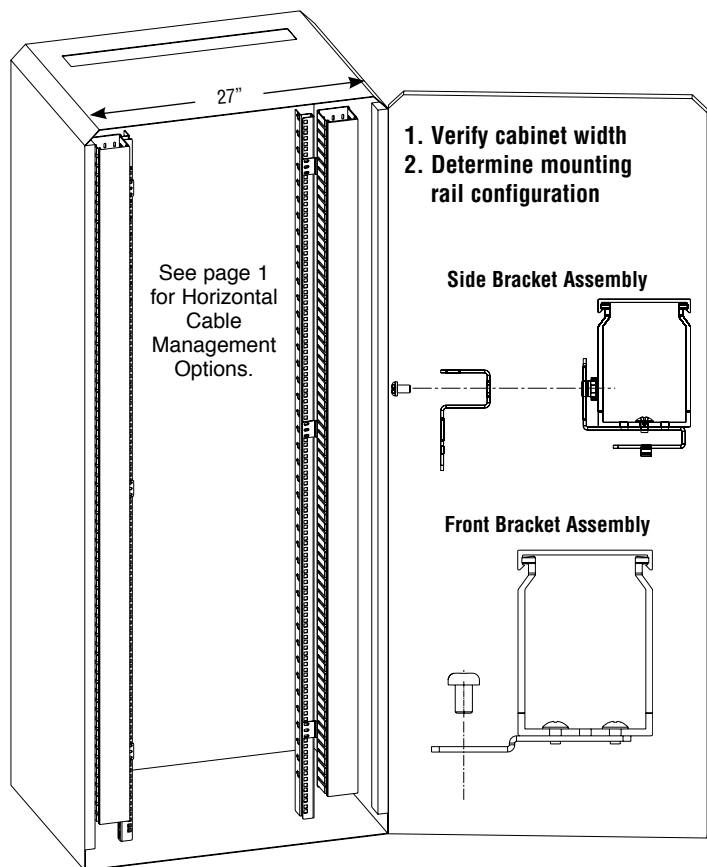
1 RU manager front only:	NMF1
2 RU manager front only:	NMF2
3 RU manager front only:	NMF3
4 RU manager front only:	NMF4
1 RU manager front and rear:	NM1
2 RU manager front and rear:	NM2
3 RU manager front and rear:	NM3
4 RU manager front and rear:	NM4

Accessory

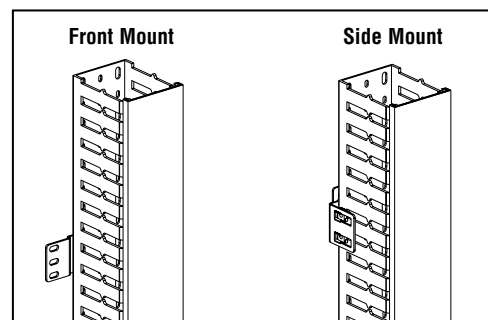
Bundle retainer:	BR2-1.3-A-X
-------------------------	-------------

Panduit IN-Cabinet Cable Management System

typical cabinet installation



Part Number	Front-Only In-Cabinet Cable Manager					
	Channel Area (in ²)	Cat. 6A (28AWG - 0.185")	Cat. 6A (24AWG - 0.275")	Cat. 6 (28AWG - 0.150")	Cat. 6 (24AWG - 0.235")	Fiber (3mm)
CWMPV2418	7.3	108	49	165	67	110
CWMPV3418	11.1	165	74	251	102	167
CWMPV2440	7.3	108	49	165	67	110
CWMPV3440	11.1	165	74	251	102	167
CWMPV2318	6.8	101	45	153	62	102
CWMPV3318	9.8	145	65	221	90	147
CWMPV2340	6.8	101	101	153	62	102
CWMPV3340	9.8	145	145	221	90	147



Dimensions are in inches (Dimensions in parentheses are metric)

WORLDWIDE SUBSIDIARIES AND SALES OFFICES

PANDUIT CANADA
Markham, Ontario
cs-cdn@panduit.com
Phone: 800.777.3300

PANDUIT EUROPE LTD.
London, UK
cs-emea@panduit.com
Phone: 44.20.8601.7200

PANDUIT SINGAPORE PTE. LTD.
Republic of Singapore
cs-ap@panduit.com
Phone: 65.6379.6700

PANDUIT JAPAN
Tokyo, Japan
cs-japan@panduit.com
Phone: 81.3.3767.7011

PANDUIT LATIN AMERICA
Jalisco, Mexico
cs-la@panduit.com
Phone: 52.333.666.2501

PANDUIT AUSTRALIA PTY. LTD.
Victoria, Australia
cs-aus@panduit.com
Phone: 61.3.9794.9020

For a copy of Panduit product warranties, log on to www.panduit.com/warranty

For more information

Visit us at www.panduit.com

Contact Customer Service by email: cs@panduit.com
or by phone: 800-777-3300

©2016 Panduit Corp.
ALL RIGHTS RESERVED.
Printed in the U.S.A.
NCS27--WW-ENG
1/2016