

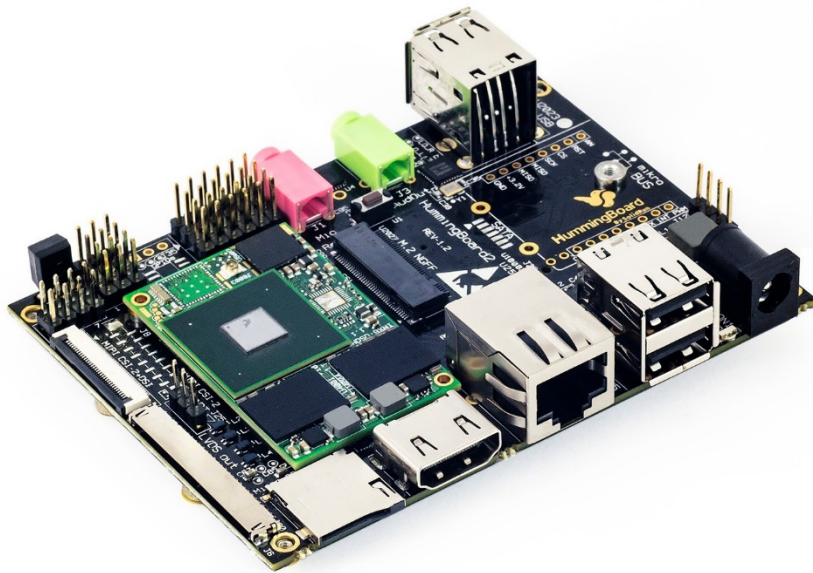


NXP-Freescale i.MX6

# HummingBoard Edge

Carrier Board for iMX6 SoM (System-On-Module)

Rev 1.2



Simple. Robust. Computing Solutions

**SolidRun Ltd.**

3 Dolev st., 3rd floor, P.O. Box 75

Migdal Tefen 2495900, Israel.

[www.solid-run.com](http://www.solid-run.com)

## Overview

HummingBoard-Edge is the ideal M2M platform, it was developed to meet the B2B market demand for a high performance, reliable and innovative device. The brand new HummingBoard-Edge includes a whole new set of features such as eMMC (4GB), mPCIe (Half or Full Size) , wide range input (7V-36V) , optional metal enclosure and much more.

## HummingBoard Edge Highlighted Features

- ✿ Based on NXP's iMX6 Single to Quad Core
- ✿ Up to 2GB DDR3
- ✿ Optimal IoT platform
- ✿ Feature rich

## System Specifications

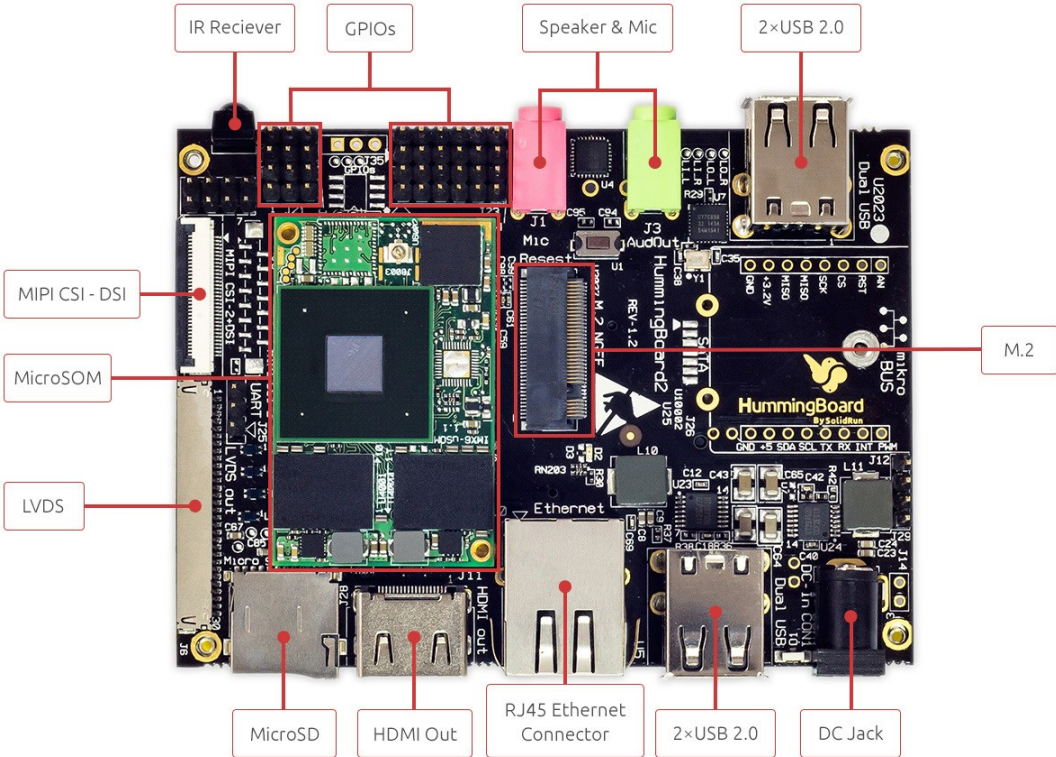
| HummingBoard Edge         |   |
|---------------------------|---|
| <b>SoM Model</b>          | i.MX6 based Solo to Quad Core SoM   |
| <b>Memory and Storage</b> | Up to 2GB DDR3<br>uSD<br>eMMC (8GB)<br>M.2 (2242)*  |
| <b>Connectivity</b>       | 1×RJ-45**<br>4×USB 2.0<br>mPCIe with SIM card holder  |
| <b>Media</b>              | HDMI-Out<br>MIPI-CSI-2 and MIPI-DSI<br>Parallel Camera (on GPIO header)<br>LVDS<br>Analog Audio |
| <b>I/O</b>                | Reset Button<br>36 pins GPIO Header<br>RTC with battery<br>IR                                   |
| <b>Power</b>              | 7V-36V, 5.5mm in (Twist and Lock mechanism)   |
| <b>Software</b>           | Linux   |
| <b>Dimensions (WxL)</b>   | 102mm×69mm  |
| <b>Enclosure</b>          | Optional Metal Enclosure  |

(\*) Supported with uSoM i2eX and above.

(\*\*) 1000Mbps link is limited to 470Mbps actual bandwidth due to internal chip busses limitation.

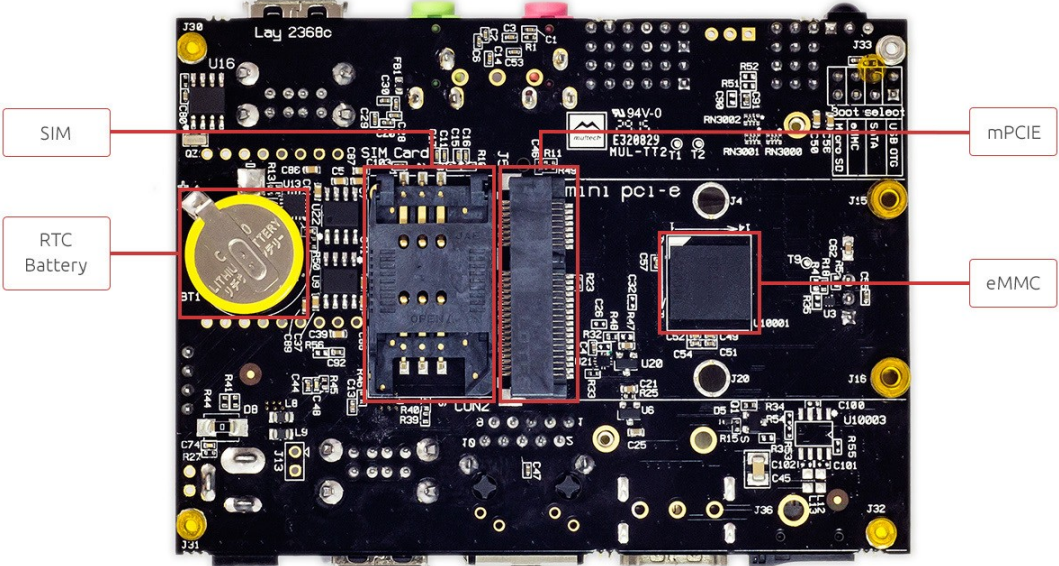
# Interfaces

## Top View



# Interfaces

## Bottom View



## Available SKUs for HummingBoard Edge

| SKU            | Description                               |
|----------------|---|
| SRHBCEE008CV12 | HummingBoard Edge 8GB eMMC Com. Temp R1.2 |
| SRHBCEE008IV12 | HummingBoard Edge 8GB eMMC Ind. Temp R1.2 |

## Safety Notice

- a. This device is to be used with Certified Power adaptor with output rated 12VDC, 1.5A. Power adapter must meet Limited power source (LPS) requirements.
- b. Power adapter must meet local safety standards and requirements based on product intended use.
- c. Power adapter must meet Operating environment conditions as specified above.

## Disposal

Follow local regulations regarding disposal of the product. Dispose of your product in accordance with local regulations. In some areas, the disposal of these items in household or business trash may be prohibited.

Help us protect the environment- recycle!

## IMPORTANT NOTICE – Please Read Carefully

No warranty of accuracy is given concerning the contents of the information contained in this document. To the extent permitted by law no liability (including liability to any person by reason of negligence) will be accepted by SolidRun Ltd. Or its employees for any direct or indirect loss or damage caused by omissions from or inaccuracies in this document.

SolidRun Ltd. Reserves the right to change details in this publication without notice

Product and company names herein may be the trademarks of their respective owners.

Information in this document supersedes and replaces information previously supplied in any prior versions of this document.

## Support

For technical support please visit:

Our Wiki – <http://wiki.solid-run.com/>

Our Forums - <http://forum.solid-run.com/>

For direct support please contact us at: [support@solid-run.com](mailto:support@solid-run.com)

## Documentation

Additional documentation available at:

<http://wiki.solid-run.com/doku.php?id=products:imx6:documents>