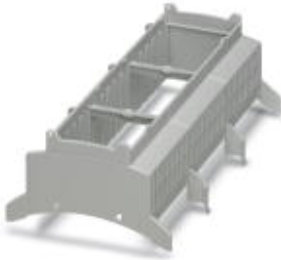


Electronic housing - BC 161,6 OT 212121 KMGY - 2201869

Please be informed that the data shown in this PDF Document is generated from our Online Catalog. Please find the complete data in the user's documentation. Our General Terms of Use for Downloads are valid (<http://phoenixcontact.com/download>)



Installation component housing, Upper part, Color: light gray, Width: 161.6 mm, Constructional height: 62.2 mm

Product Features

- Item is from the BC product range
- Conforms to DIN EN 43880
- Tool-free mounting
- Available in overall widths from one to nine width units (17.8 mm ... 161.6 mm)
- Inflammability class V0 according to UL 94
- Variety of connection technologies
- Can be mounted on the DIN rail or the wall
- Optional with bus connector for DIN rail mounting

Key Commercial Data

Packing unit	1 pc
Minimum order quantity	500 pc
Custom tariff number	85472000
Country of origin	Germany

Technical data

General

Housing type	Installation component housing
Housing material	Polycarbonate
Color	light gray

Ambient conditions

Ambient temperature (operation)	-40 °C ... 105 °C (depending on power dissipation)
---------------------------------	--

Dimensions

Length	89.7 mm
Constructional height	62.2 mm

Electronic housing - BC 161,6 OT 212121 KMGY - 2201869

Technical data

Dimensions

Width	161.6 mm
-------	----------

Technical data

Flammability rating according to UL 94	V0
Power dissipation without gap	16.95 W

Standards and Regulations

Flammability rating according to UL 94	V0
--	----

Classifications

eCl@ss

eCl@ss 4.1	27180401
eCl@ss 5.1	27180506
eCl@ss 6.0	27180802
eCl@ss 8.0	27182702
eCl@ss 9.0	27182702

ETIM

ETIM 4.0	EC001031
ETIM 5.0	EC001031