

SCHEMATIC

FUNCTION:

1PNO OFF-(ON) + 1PNC ON-(OFF)

RATING:

2A 48VDC
24V 20mA

CONTACT RESISTANCE:

Initial: 50mΩ Max. at 1A, 12VDC
Insulation Resistance: 1,000MΩ Min. at 500VDC

DIELECTRIC STRENGTH:

2,000VAC Min. for 1 Minute

ELECTRICAL LIFE:

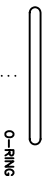
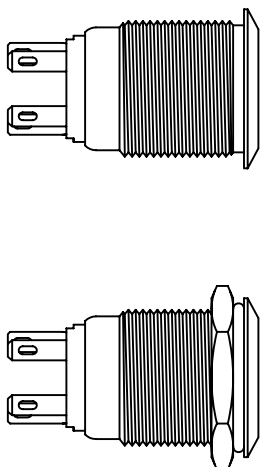
50,000 Cycles
MECHANICAL LIFE: 1,000,000 Cycles

TEMPERATURE:

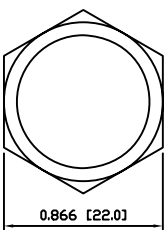
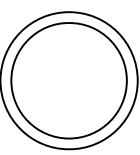
Operating: -20°C to 70°C
IP65

APPROVALS:

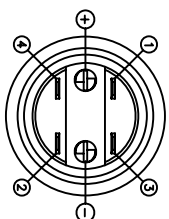
ROHS
COMPLIANT



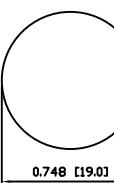
EXPLODED VIEW



ASSEMBLED VIEW



SUGGESTED PANEL CUTOUT



MAXIMUM PANEL THICKNESS: 0.472 [12.0mm]

- COLORS AND FINISH**
- BEZEL: Stainless Steel Machine Finish
 - ACTUATOR: Stainless Steel Machine Finish
 - ILLUMINATION: Green (Forward) Green (Reverse)
 - MARKING: None
- CONTACTS:** Silver/Cadmium Oxide (AgCdO)
- TERMINALS:** Brass (H62)
- O-RING:** Silicone Rubber
- INNER ASSEMBLY:** Polyoxymethylene (POM) Polycarbonate (PC) Brass (H62)
- SEALING:** Silicone Rubber
- HARDWARE:** Nickel Plated Brass (H59)
- SPRING:** Stainless Steel (C-118IN9)



PV4F2Y0SS-335

REV.	DATE	BY	CAD
A	09/07/24		CAB
B	09/07/24		CAB
A	09/10/19		CAB

THE INFORMATION CONTAINED IN THIS DOCUMENT IS PROPRIETARY TO E-SWITCH AND IS NOT TO BE COPIED OR TRANSMITTED

REV.	DATE	BY	DESCRIPTION
A	09/25/12	TC	NEW RELEASE
	2009	FOR	

DIMENSIONS	
INCHES [MILLIMETERS]	GENERAL TOLERANCES
±0.008 [±0.2] / ±1	SCALE
	DRAWING NOT TO SCALE

DATE	REVISION
6-25-2012	A