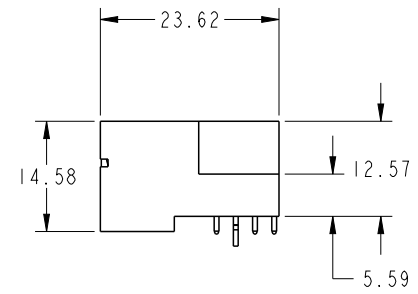
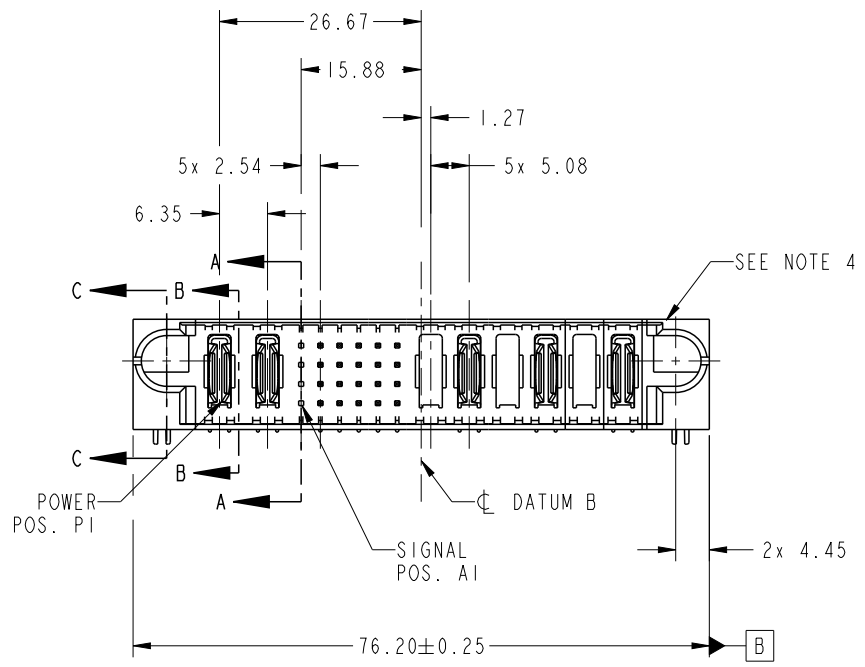


PRODUCT NO.	ROWS	POWER		SIGNAL						POWER						E2	
		E1	P1	P2	1	2	3	4	5	6	P3	P4	P5	P6	P7		P8
51939-737-- NOTE 3	DCBA		PC	PC	X	V	V	V	V	V	X	PC	X	PC	X	PC	



CODE	DIM "M" MATING LENGTH	CONTACT TYPE
V	[6.86]	SIGNAL
Q	[6.86]	SIGNAL
P	[6.86]	SIGNAL
N	[6.86]	SIGNAL
PC	[N/A]	POWER
HA	[N/A]	HOLD-DOWN
X	[N/A]	OMITTED

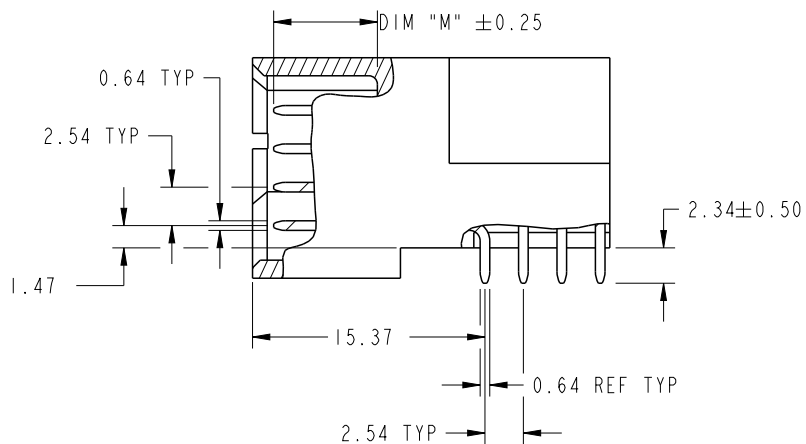
spec ref	*	dr	Ruan MT	2013/02/20	projection	MM	size	A4	scale	1:1
tolerance std	TOLERANCES UNLESS OTHERWISE SPECIFIED	eng	Ruan MT	2013/03/20		←→	ecn no	-	rel level	Released
SEE NOTE		chr	-	-						
surface	linear	appr	Pei-Ming Zheng	2013/03/20	product family	PwrBlade	rev	51939-737	A	
	angular									
	0.X									
	0.XX									
	0.XXX									
	0°									
	±0.5									
	±0.25									
	±0.1									
	±2°									
		www.fci.com			cat. no.	-	Product - Customer Drw	sheet 1 of 4		



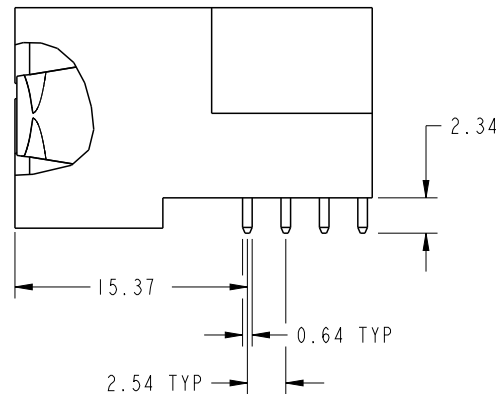
Copyright FCI.

PRODUCT NUMBER

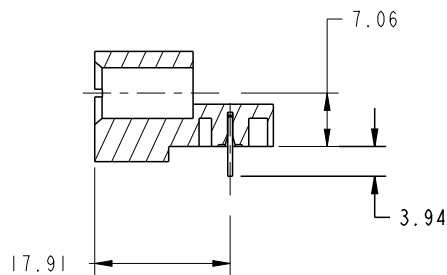
51939-737--
NOTE: 3



BROKEN-OUT SECTION A-A
SCALE 2:1



BROKEN-OUT SECTION B-B
SCALE 2:1

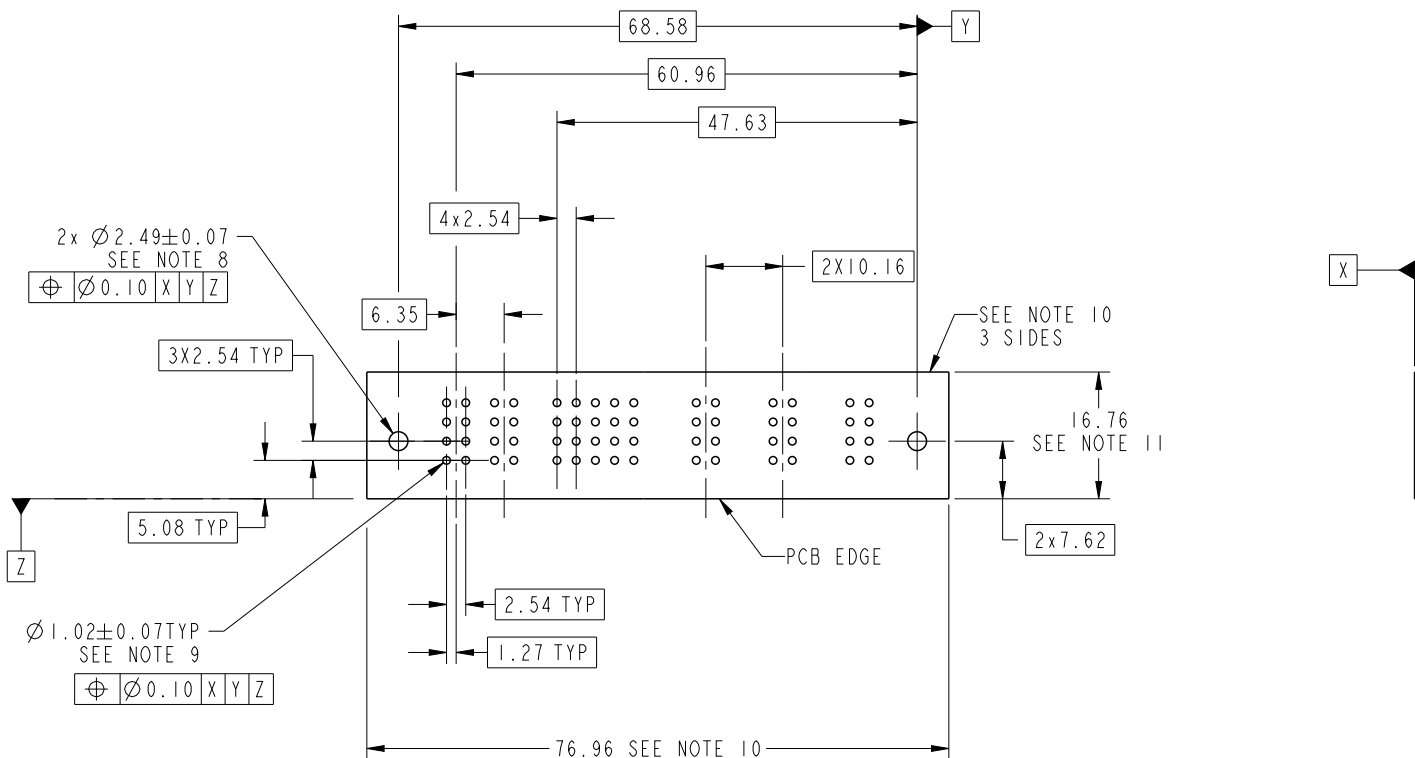


SECTION C-C

dr	Ruan MT	2013/02/20	projection 	MM 	size	A4	scale	1:1
eng	Ruan MT	2013/03/20			ecn no	-		
chr	-	-			rel level	Released		
appr	Pei-Ming Zheng	2013/03/20	product family	PwrBlade	rev	A		
	title	2P + 24S + 6P RIGHT ANGLE SOLDER HEADER		dwg no	51939-737			
www.fci.com	cat. no.	-	Product - Customer Drw	sheet 2 of 4				

PRODUCT NUMBER

51939-737__
NOTE: 3



RECOMMENDED PCB LAYOUT

dr	Ruan MT	2013/02/20	projection 	MM 	size	A4	scale	1:1	
eng	Ruan MT	2013/03/20			ecn no	-			
chr	-	-			rel level	Released			
appr	Pei-Ming Zheng	2013/03/20	product family	PwrBlade					
	title	2P + 24S + 6P RIGHT ANGLE SOLDER HEADER			dwg no	51939-737		rev	A
www.fci.com	cat. no.	-	Product - Customer Drw			sheet 3 of 4			

PRODUCT NUMBER

51939-737--
NOTE: 3

NOTES:

1. DIMENSIONS AND TOLERANCES ARE IN ACCORDANCE WITH ASME Y14.5M, 1994 UNLESS OTHERWISE SPECIFIED.

CONNECTOR NOTES:

- 2. HOUSING MATERIAL: UL 94 V-0 GLASS FILLED HIGH-TEMP THERMOPLASTIC
POWER CONTACT MATERIAL: COPPER ALLOY
SIGNAL PIN MATERIAL: COPPER ALLOY
- 3. SEE ITEM 1 & 2 IN PRINT 10064183 FOR PLATING SPEC OF 51939-737 AND 51939-737LF RESPECTIVELY.
- 4. MANUFACTURER'S NAME, DATE CODE AND OPTIONAL P/N TO APPEAR ON THIS SURFACE. THE MARK CAN BE OMITTED IF THERE IS NOT ENOUGH SPACE ON THIS SURFACE.
- 5. PRODUCT SPECIFICATION GS-12-149.
APPLICATION SPECIFICATION BUS-20-067.
- 6. PACKAGED IN TRAYS.

PCB NOTES:

- 7. ALL HOLE DIAMETERS ARE FINISHED HOLE SIZE.
- 8. MOUNTING HOLES, WHERE APPLICABLE, ARE UNPLATED.
- 9. $\varnothing 1.151 \pm 0.025$ DRILLED HOLES PLATED WITH 0.008 MIN SnPb OR Sn OVER 0.03 TO 0.08 Cu PLATING TO ACHIEVE $\varnothing 1.02 \pm 0.07$ HOLE.
- 10. CONNECTOR KEEP-OUT ZONE.



Copyright FCI.

dr	Ruan MT	2013/02/20	projection 	MM 	size	A4	scale	1:1
eng	Ruan MT	2013/03/20			ecn no	-		
chr	-	-						
appr	Pei-Ming Zheng	2013/03/20	product family	PwrBlade	rel level	Released		
	title	2P + 24S + 6P RIGHT ANGLE SOLDER HEADER		dwg no	51939-737		rev	A
www.fci.com	cat. no.	-	Product - Customer Drw			sheet 4 of 4		