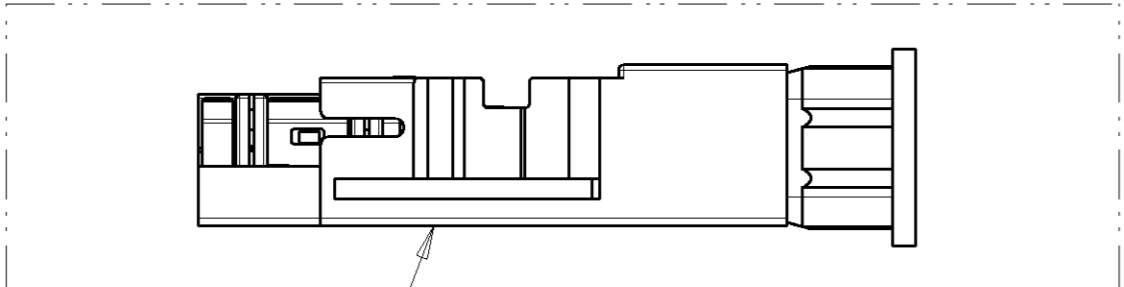
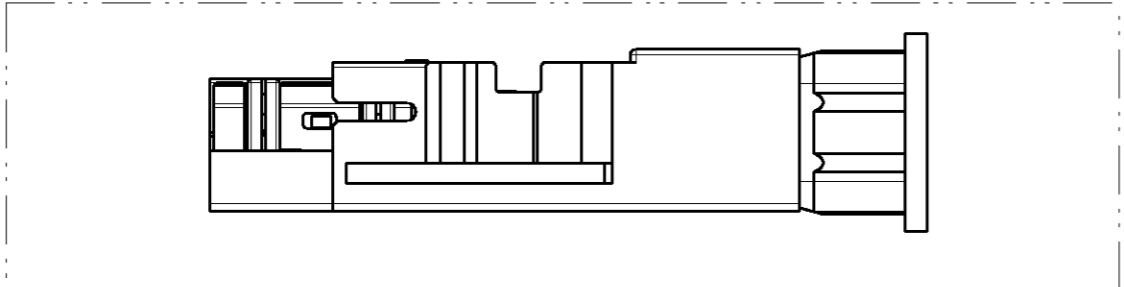
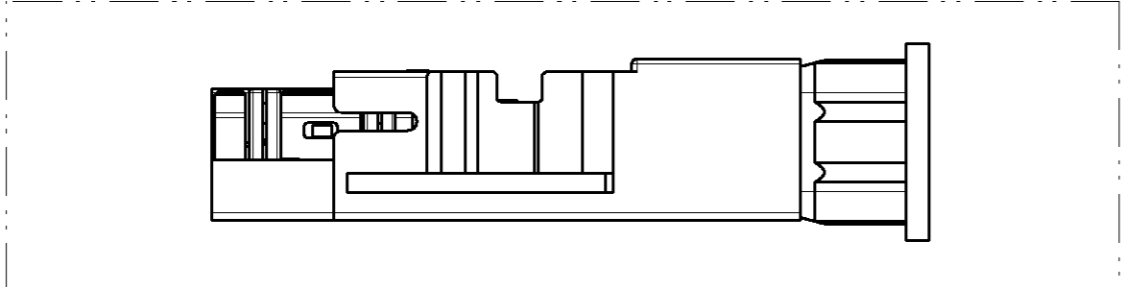
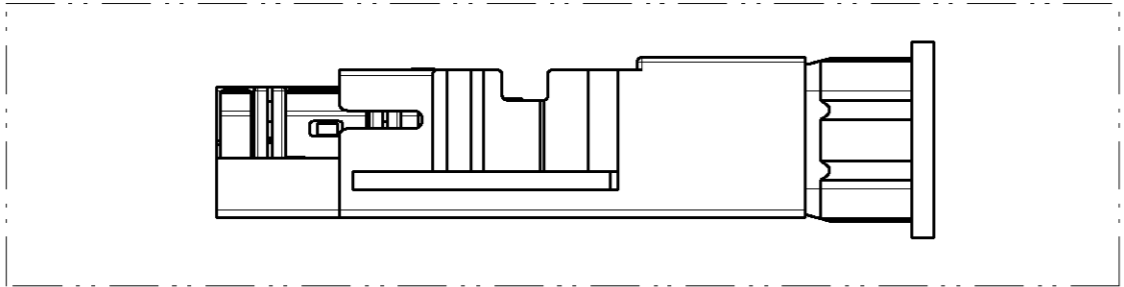
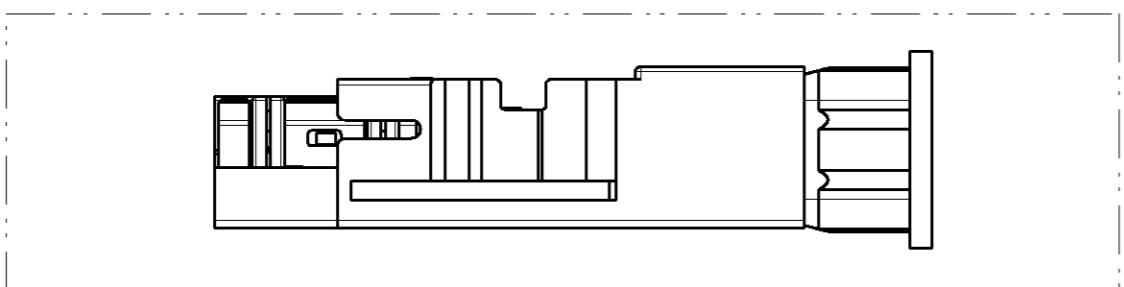
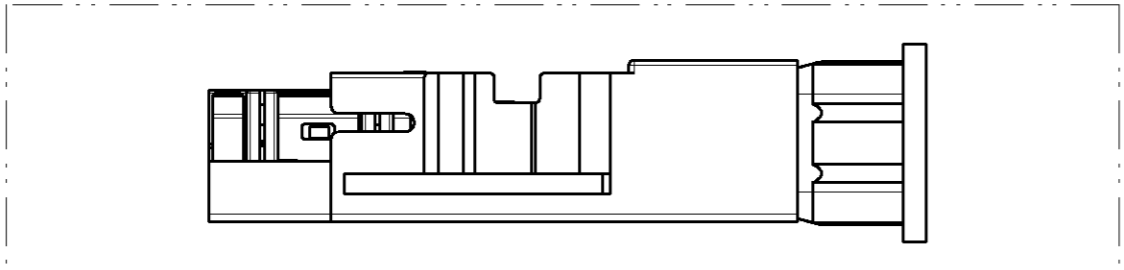
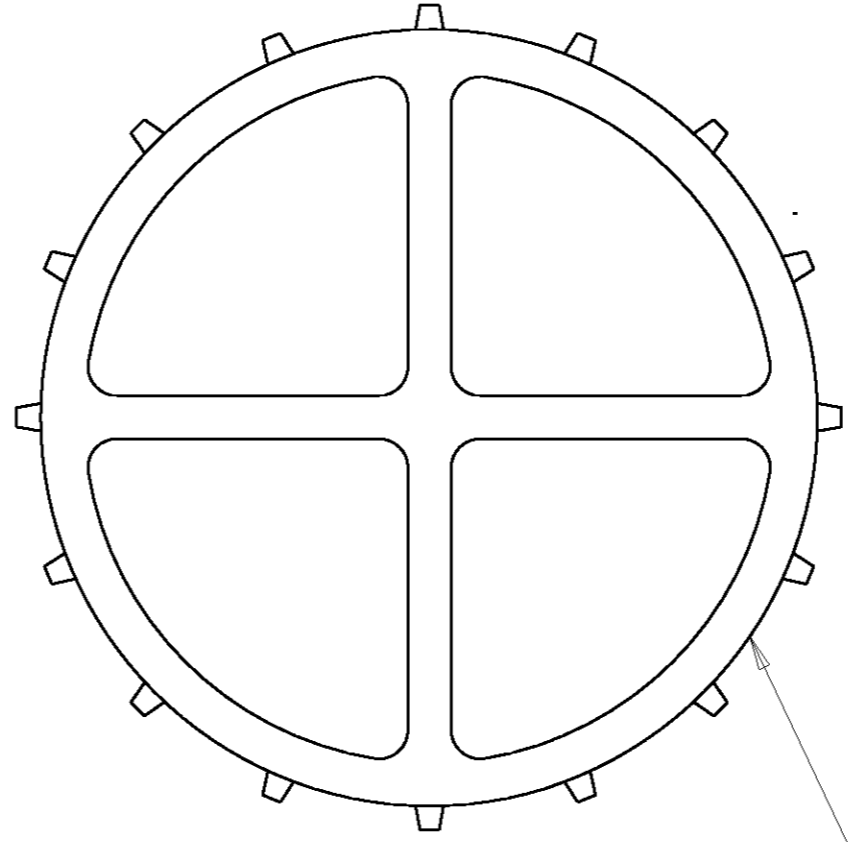


LOC	DIST	REVISIONS			
P	LTR	DESCRIPTION	DATE	DWN	APVD
CE	00	A	REV PER ECR-06-003731	16FEB2006	BB DK



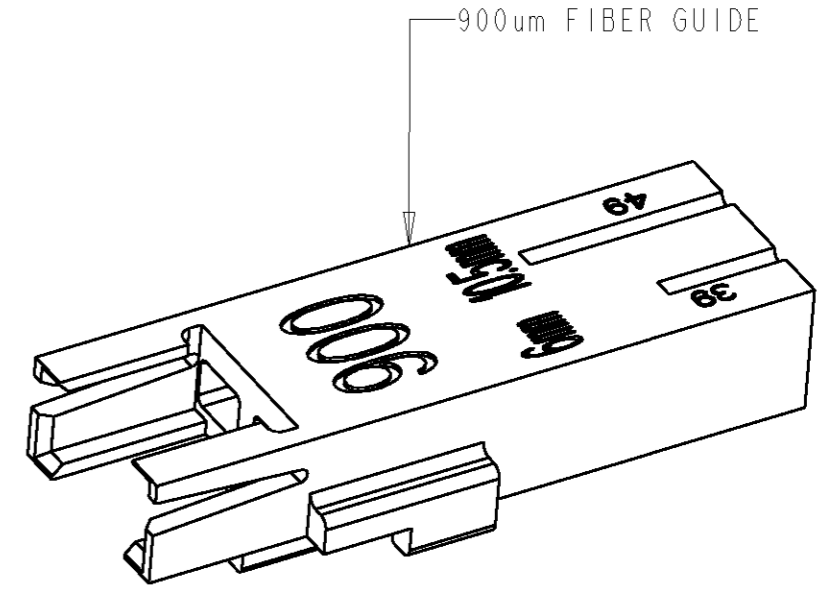
MT-RJ SECURE JACK XG MODULE ASSEMBLY



ICON WHEEL



MT-RJ ACTUATION KEY



900um FIBER GUIDE

SCALE 3:1

DESCRIPTION	PART NUMBER
SLATE (K10)	1-6693949-0
ORANGE (K9)	6693949-9
VIOLET (K8)	6693949-8
BROWN (K7)	6693949-7
AQUA (K6)	6693949-6
ROSE (K5)	6693949-5
BLUE (K4)	6693949-4
GREEN (K3)	6693949-3
YELLOW (K2)	6693949-2
RED (K1)	6693949-1

THIS DRAWING IS A CONTROLLED DOCUMENT FOR AMP INCORPORATED. IT IS SUBJECT TO CHANGE AND THE CONTROLLING ENGINEERING ORGANIZATION SHOULD BE CONTACTED FOR THE LATEST REVISION.		DWN B. BRIGGS 01NOV2005 CHK D. KIRSCH 01NOV2005 APVD S. BUCHTER 07NOV2005	AMP AMP Incorporated Harrisburg, PA 17105-3608
DIMENSIONS: mm 	TOLERANCES UNLESS OTHERWISE SPECIFIED: 0 PLC ± 1 PLC ± 2 PLC ± 3 PLC ± 4 PLC ± ANGLES ± FINISH -	PRODUCT SPEC - APPLICATION SPEC - WEIGHT -	NAME MT-RJ SECURE JACK KIT, 6-PACK, XG, 50/125, 900um SIZE A2 CAGE CODE 00779 DRAWING NO. 6693949 SCALE NTS SHEET 1 OF 1 REV A
CUSTOMER DRAWING			