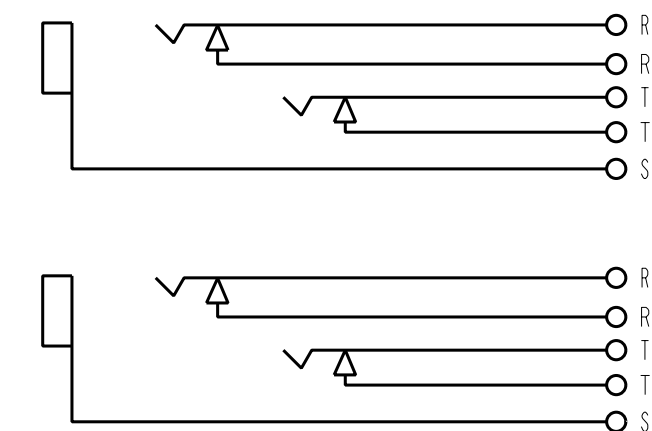
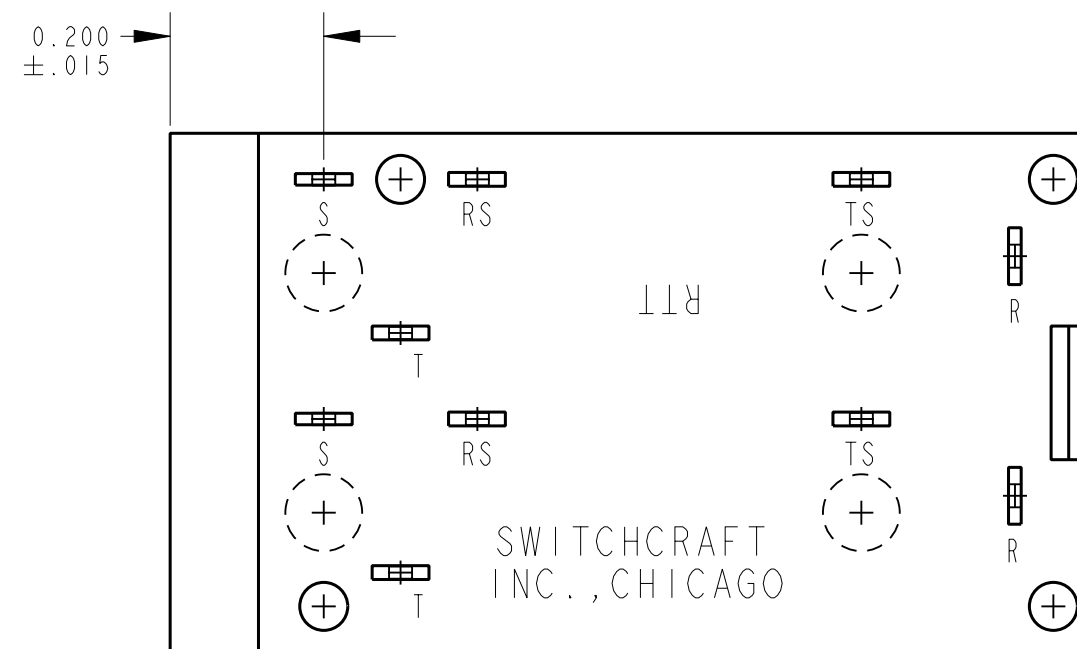


- NOTES:
- MATES WITH SWITCHCRAFT PLUG TT-253 OR TT-263.
 - SPECIFICATIONS:
 - ELECTRICAL:
 - DIELECTRIC WITHSTANDING VOLTAGE 500VAC.
 - CONTACT RESISTANCE 0.020 Ω MAX (INITIAL)
 - INSULATION RESISTANCE 10¹⁰ Ω AT 500 VDC (INITIAL)
 - ENVIRONMENTAL:
 - THERMAL LIMITS -55°C TO 85°C (NON OPERATING)
 - THERMAL SHOCK MIL-STD-202 METHOD 107
 - SALT SPRAY MIL-STD-202 METHOD 101
 - MOISTURE RESISTANCE MIL-STD-202 METHOD 106 (LESS STEPS 7A & 7B)
 - MECHANICAL:
 - SHOCK MIL-STD-202 METHOD 213
 - VIBRATION MIL-STD-202 METHOD 201
 - INSERTION FORCE 7 LBS MAX (31.14 N)
 - WITHDRAWAL FORCE 1.5 LBS MAX (6.67 N)
 - MATERIALS:
 - HOUSING GLASS FILLED THERMOPLASTIC UL94V-0
 - SPRINGS COPPER ALLOY, SILVER PLATED
 - CONTACTS GOLD ALLOY (W.E.#1) CROSSBAR
 - MECHANICAL LIFE: 10K CYCLES
 - THIS PRODUCT IS RoHS COMPLIANT.



CUSTOMER DRAWING

★ STAR SYMBOL DENOTES CRITICAL DIMENSION				THIS DRAWING DESCRIBES A DESIGN CONSIDERED PROPRIETARY IN NATURE, DEVELOPED AND MANUFACTURED BY SWITCHCRAFT INC. AND IS RELEASED ON A CONFIDENTIAL BASIS FOR IDENTIFICATION PURPOSES ONLY.				
UNLESS OTHERWISE SPECIFIED				SIZE	WIDTH	MULT	LBS/M	TEMPER
1. ALL DIMENSIONS IN INCHES				FINISH				MATERIAL
- TWO PLACE DECIMALS ±0.01				SPEC No.				SPEC No.
- THREE PLACE DECIMALS ±0.005				FIRST USED ON				SCALE
- ANGLES ±1°				DATE DRAWN				4:1
- ALL DIA. CONCENTRIC WITHIN 0.005 T.I.R.				07-Aug-08	JEB	CHKD	APVD	
2. FEATURES ON THE SAME CENTERLINE MUST BE ALIGNED WITHIN ±0.002				08-08-08	JEB	08-08-08	08-08-08	
3. REMOVE ALL BURRS				NAME				PART No.
DO NOT SCALE DRAWING				RIGHT ANGLE TWIN				TT JAX - 3 CONDUCTOR, RoHS
REVISIONS				SHEET				OF
REV	ECO NUMBER	DATE	BY	APVD	A			REV
								A