

THIS DRAWING IS UNPUBLISHED. RELEASED FOR PUBLICATION 20  
 © COPYRIGHT 20 BY - ALL RIGHTS RESERVED.

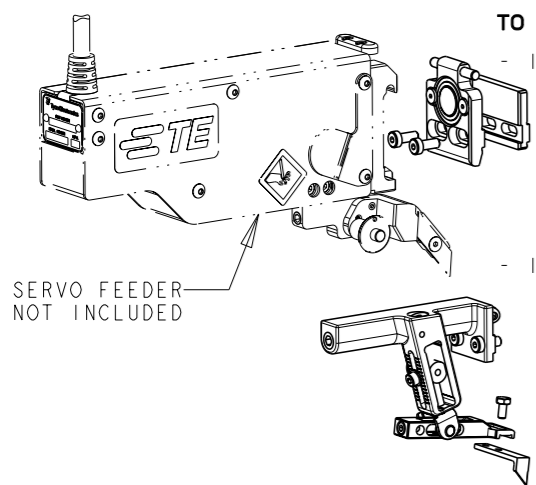
PART NUMBER	REV	FIRST USED
2119950-1	E	-

LOC	DIST	REVISIONS				
P	LTR	DESCRIPTION	DATE	DWN	APVD	
A	00					
		C ECR-11-009990	12MAY2011	BW	TE	
		E ECR-11-015447	26JUN2011	BW	DP	

**FEED CONVERSION INSTRUCTIONS:**

**TO REMOVE EXISTING APPLICATOR FEED COMPONENTS:**

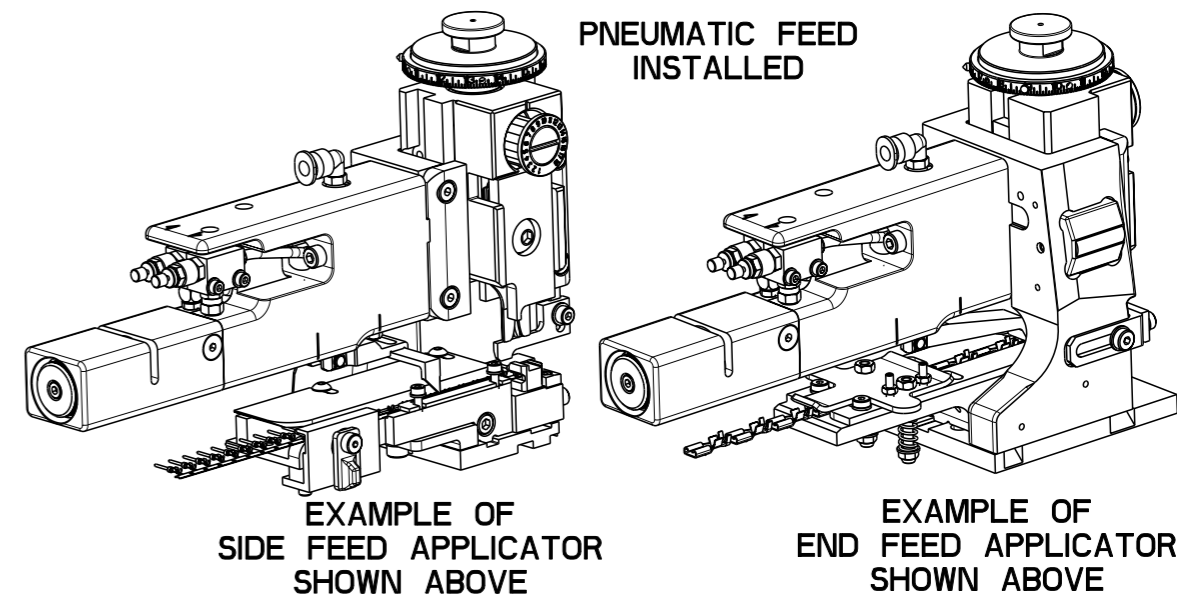
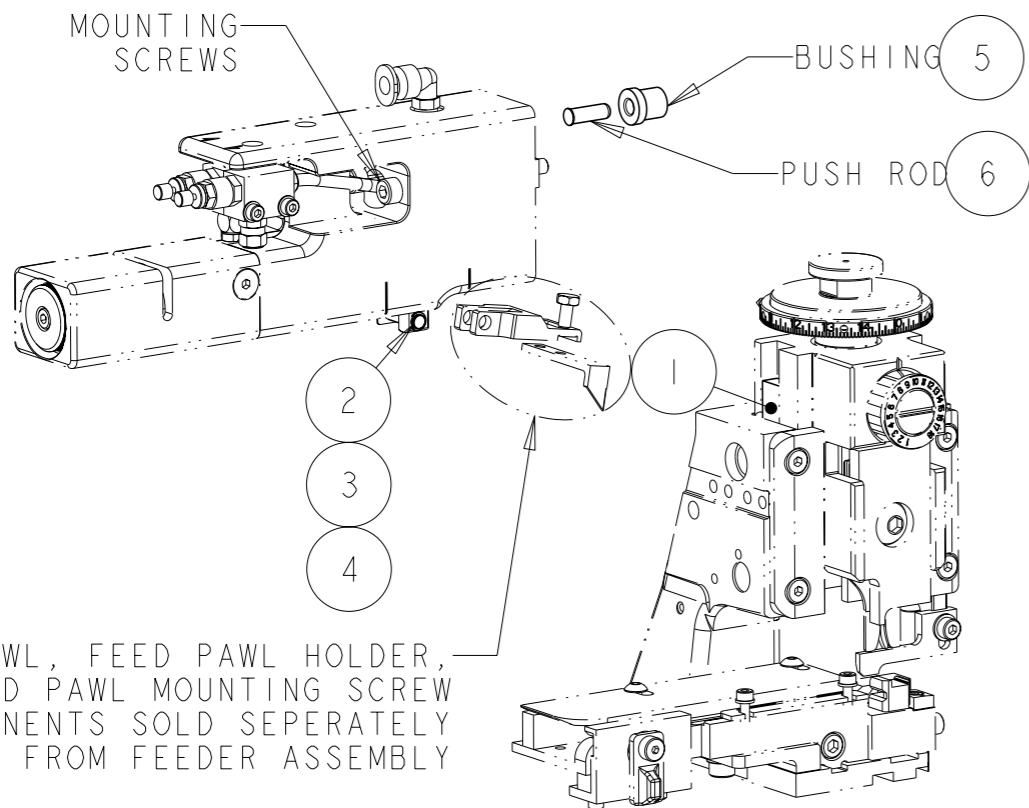
- IF REMOVING SERVO FEEDER
  - DISENGAGE SERVO FEEDER FROM LATCH PLATE
  - REMOVE THE TWO SOCKET HEAD CAP SCREWS HOLDING THE LATCH PLATE TO THE APPLICATOR HOUSING
  - REMOVE LATCH PLATE AND LATCH PLATE SPACER (IF USED) FROM APPLICATOR
- IF REMOVING MECHANICAL FEEDER
  - REMOVE THE TWO SOCKET HEAD CAP SCREWS HOLDING THE MECHANICAL FEEDER ASSEMBLY TO THE APPLICATOR HOUSING
  - REMOVE MECHANICAL FEEDER ASSEMBLY FROM APPLICATOR
  - REMOVE MECHANICAL FEEDER FEED CAM FROM APPLICATOR RAM AS WELL AS FEED CAM IN SPARE STORAGE LOCATION (SEE INSTRUCTION SHEET 408-10389 OR 408-10390: SECTION 2)



SERVO FEEDER NOT INCLUDED

**INSTALLING NEW APPLICATOR FEED COMPONENTS:**

- INSTALLING PNEUMATIC FEEDER
  - INSTALL PNEUMATIC FEEDER FEED CAM ONTO APPLICATOR RAM (IN PROPER POSITION AS REFERENCED ON APPLICATOR ASSEMBLY DRAWING OR SEE INSTRUCTION SHEET 408-10389 OR 408-10390: SECTION 2)
  - LUBRICATE AND INSERT BUSHING AND PUSH ROD INTO HOLE IN APPLICATOR HOUSING
  - PLACE PNEUMATIC FEEDER ASSEMBLY ON KEY SLOT OF APPLICATOR HOUSING
  - INSTALL THE TWO SOCKET HEAD CAP SCREWS THAT HOLD THE PNEUMATIC FEEDER ASSEMBLY TO THE APPLICATOR HOUSING
  - REFER TO INSTRUCTION SHEET 408-10389 OR 408-10390; SECTION 5 FOR PROPER ADJUSTMENT PROCEDURES.



**SEE APPLICATOR STYLE CONVERSION CHART ON APPLICATOR ASSEMBLY DRAWING FOR ITEMS THAT ARE REQUIRED IN ADDITION TO RETROFIT KIT COMPONENTS**

QTY	UNIT	PART NO	DESCRIPTION	ITEM NO
1	-	2119950	PRINT, RETROFIT KIT, PNEUMATIC FEED	7
1	-	2119640-1	PUSH ROD, AIR FEED	6
1	-	2079988-1	BUSHING, LCH5-12, MISUMI	5
2	-	21045-3	RING, RETAIN, EXTERN, 3/16 CRESCENT	4
1	-	240638-1	SPRING, FEED FINGER	3
1	-	3-23627-7	PIN, RETAIN, GRVD, 3/16 x .854	2
1	-	18023-9	SCR, SKT HD CAP M4 x 6.0	1
-1	U/M	PART NO	DESCRIPTION	ITEM NO

THIS DRAWING IS A CONTROLLED DOCUMENT.		DWN B. WEAVER 05NOV2010	TE Connectivity	
DIMENSIONS: mm		CHK A. WILL 05NOV2010		
TOLERANCES UNLESS OTHERWISE SPECIFIED:		APVD D. PFAUTZ 05NOV2010	NAME RETROFIT KIT, PNEUMATIC FEED	
0 PLC ±- 1 PLC ±- 2 PLC ±- 3 PLC ±- 4 PLC ±- ANGLES ±-		PRODUCT SPEC -	RESTRICTED TO -	
MATERIAL -		APPLICATION SPEC -	SIZE A3	CAGE CODE 00779
FINISH -		WEIGHT -	DRAWING NO C-2119950	REV E
CUSTOMER ACCESSIBLE PRODUCTION DRAWING			SCALE 2:5	SHEET 1 OF 1