

PART NUMBER	REV	FIRST USED
567935-1	B	854040-3

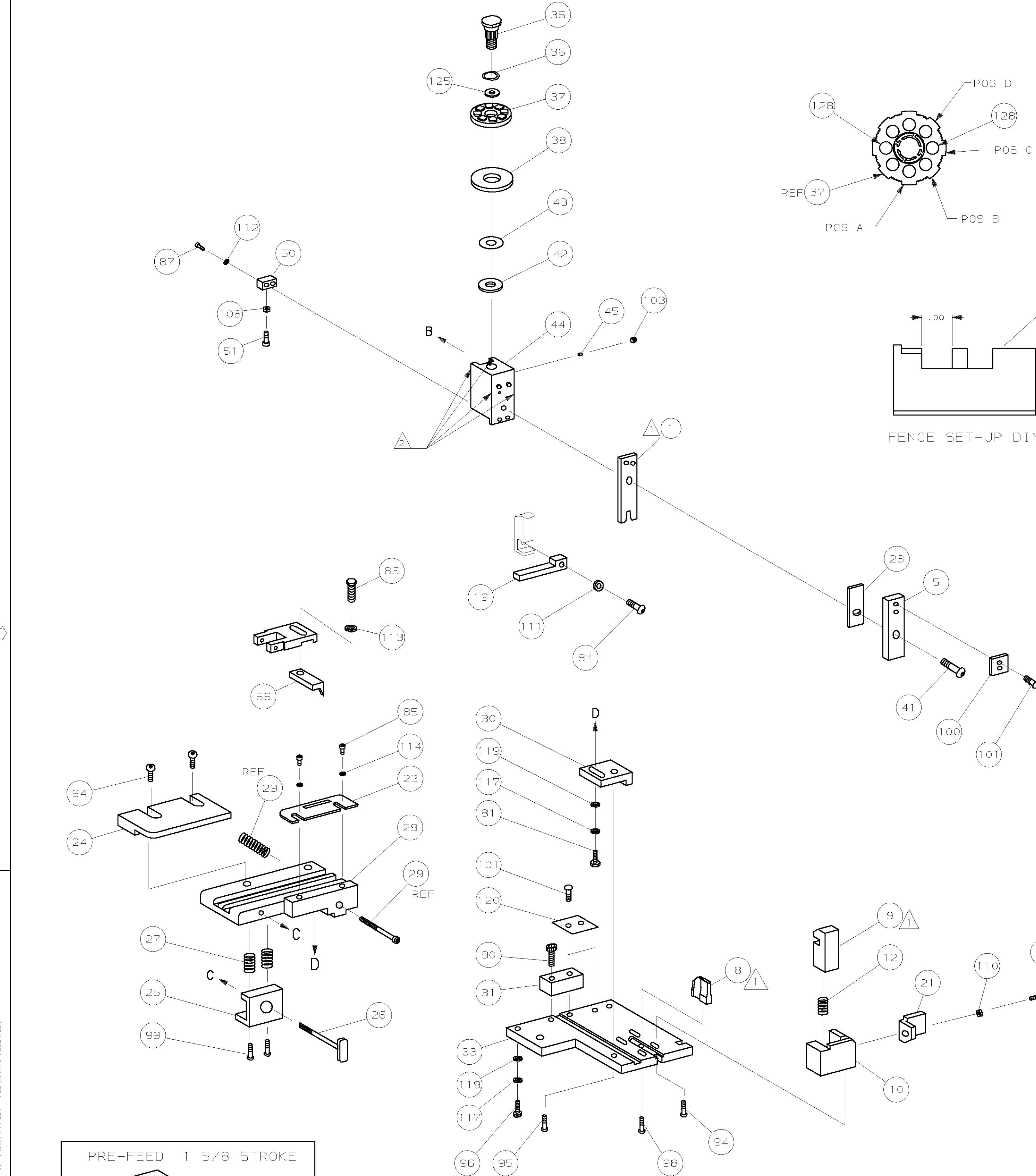
TERMINAL NAME: BUTTON CONTACT		286574		VISIBLE	CRIMPING DATA	
AMP P/N	MFG P/N	CRIMP	SIZE	TYPE	WIRE SIZE	
286574	LS3-HB	A	.053 ±.002 [1.35 ±0.05mm]		20	
		B	NOT		USED	
		C	NOT		USED	
		D	NOT		USED	
WIRE STRIP LENGTH	TERM APPL SPEC	FEED	APPL INSTRUCTION	SET UP GAGE	LAYOUT	
.109-.141	NONE	.337	SEE CUSTOMER MANUAL	NONE	L1915	

SIM TO HDM NONE						
QTY	REV	U/M	DWG SIZE	PART NO	DESCRIPTION	ITEM NO
						70
						69
						68
						67
						66
						65
						64
						63
						62
						61
						60
						59
						58
						57
						56
						55
						54
						53
						52
						51
						50
						49
						48
						47
						46
						45
						44
						43
						42
						41
						40
						39
						38
						37
						36
						35
						34
						33
						32
						31
						30
						29
						28
						27
						26
						25
						24
						23
						22
						21
						20
						19
						18
						17
						16
						15
						14
						13
						12
						11
						10
						9
						8
						7
						6
						5
						4
						3
						2
						1

QTY	REV	U/M	DWG SIZE	PART NO	DESCRIPTION	ITEM NO
2	-	C		3-354779-0	PIN, WIRE DISC (.3140)C	129
						128
						127
						126
1	-	A		986950-1	WASHER, FLAT PRECISION	125
1	-	A		217238-3	GENERAL INSTRUCTION PACKAGE	124
						123
						122
						121
1	-	B		690701-2	PLATE, SERIAL NO.	120
2	-	A		21899-2	WASHER, FLAT (#10) 5 G ADJ BLK	119
						118
2	-	A		21024-5	WASHER, LOCK (#10) ADJ BLOCK	117
						116
						115
2	-	A		21024-2	WASHER, LOCK (#4) FRONT STP GUIDE	114
REF	-	A		21024-4	WASHER, LOCK (#8) FEED FINGER	113
2	-	A		21024-4	WASHER, LOCK (#8) DEP-HOLD	112
REF	-	A		21024-4	WASHER, LOCK (#8) STRIPPER	111
1	-	A		21024-3	WASHER, LOCK (#6) SHEAR	110
						109
1	-	A		21018-5	NUT, HEX (#6) HOLD DOWN	108
						107
						106
						105
1	-	A		21009-2	SCR, 5KT 5SET (1/4-20x.25 LW) RAM	104
						103
						102
4	-	A		21017-2	SCR, DRIVE (#2x.19) ID PLATE	101
1	-	B		819347-1	PLATE, IDENTIFICATION	100
2	-	A		3-21002-0	SCR, BHC (10-32x.88) DRAG	99
1	-	A		22733-8	SCR, BHC (8-32x.38 LW) ANVIL	98
						97
1	-	A		3-21000-8	SCR, SHC (10-32x.88) MOUNTING	96
1	-	A		2-21002-7	SCR, BHC (10-32x.50) 5G ADJ BLK	95
4	-	A		2-21002-2	SCR, BHC (8-32x.50) SHEAR-TERM SUP	94
						93
						92
1	-	A		1-21002-7	SCR, SHC (6-32x.50) CAM	91
2	-	A		2-21000-7	SCR, SHC (8-32x.50) SCR BLK	90
						89
						88
2	-	A		2-21000-7	SCR, SHC (8-32x.48) DEP-HOLD DOWN	87
REF	-	A		2-22603-0	SCR, HEX HD (8-32x.31) FEED FINGER	86
2	-	A		1-21000-3	SCR, SHC (4-40x.25) F ST GUIDE	85
REF	-	A		22733-9	SCR, BHC (8-32x.50 SL) STRIPPER	84
						83
						82
1	-	A		3-22603-1	SCR, HEX (10-32x.38) 5G ADJ BL	81
						80
						79
						78
2	-	B		463310-5	BLADE, STRIPPING (#20)	77
						76
						75
						74
						73
						72
						71

QTY	REV	U/M	DWG SIZE	PART NO	DESCRIPTION	ITEM NO
-1						

QTY	REV	U/M	DWG SIZE	PART NO	DESCRIPTION	ITEM NO
-1						



- 1 RECOMMENDED SPARE PARTS.
- 2 GREASE LIGHTLY.
- 3 ITEM NOT SHOWN
- 4 LOCATE FEED FINGER ON OUTSIDE EDGE OF STRIP GUIDE
- 5 CUT TO LENGTH AT ASSY

THIS DRAWING IS A CONTROLLED DOCUMENT.

THIS DRAWING IS UNCLASSIFIED - RELEASED FOR PUBLICATION 08-FEB-2001 BY AMP INCORPORATED. ALL RIGHTS RESERVED.

567935

DIMENSIONS IN INCHES. DO NOT SCALE PRINT. TOLERANCES UNLESS OTHERWISE SPECIFIED:		MATERIAL		HT TR		FIN	
2 PLC DEC ±.02		DR 16APR97		APP 16APR97			
3 PLC DEC ±.		CHK 16APR97		REL T.ELBIN			
4 PLC DEC ±.		C.ERISMAN		AMP Incorporated		Harrisburg, PA 17105-3608	
NAME STRIPPER CRIMPER APPLICATOR				MACHINE REF STRIPPER CRIMPER			
SCALE		DWG NO 567935		SHEET 1 OF 1		REV B1	

CUSTOMER AND ASSEMBLY DRAWING 1