

Serial Memory Single-Wire Evaluation Kit

Quick Start Guide

Americas

Atlanta, GA - 678-957-9614
Austin, TX - 512-257-3370
Boston, MA - 774-760-0087
Chicago, IL - 630-285-0071
Dallas, TX - 972-818-7423
Detroit, MI - 248-848-4000
Houston, TX - 281-894-5983
Indianapolis, IN - 317-773-8323
Los Angeles, CA - 949-462-9523
New York, NY - 631-435-6000
Phoenix, AZ - 480-792-7200
Raleigh, NC - 919-844-7510
San Jose, CA - 408-735-9110
Canada - Toronto - 905-695-1980

Europe

Austria - Wels - 43-7242-2244-39
Denmark - Copenhagen - 45-4450-2828
Finland - Espoo - 358-9-4520-820
France - Paris - 33-1-69-53-63-20
France - Saint Cloud - 33-1-30-60-70-00
Germany - Garching - 49-8931-9700
Germany - Haan - 49-2129-3766400
Germany - Heilbronn - 49-7131-67-3636
Germany - Karlsruhe - 49-721-625370
Germany - Munich - 49-89-627-144-0
Germany - Rosenheim - 49-8031-354-560
Israel - Ra'anana - 972-9-744-7705
Italy - Milan - 39-0331-742611
Italy - Padova - 39-049-7625286
Netherlands - Drunen - 31-416-690399
Norway - Trondheim - 47-7289-7561
Poland - Warsaw - 48-22-3325737
Romania - Bucharest - 40-21-407-87-50
Spain - Madrid - 34-91-708-08-90
Sweden - Gothenberg - 46-31-704-60-40
Sweden - Stockholm - 46-8-5090-4654
UK - Wokingham - 44-118-921-5800

Asia/Pacific

Hong Kong - 852-2943-5100
Australia - Sydney - 61-2-9868-6733
China - Beijing - 86-10-8569-7000
China - Chengdu - 86-28-8665-5511
China - Chongqing - 86-23-8980-9588
China - Dongguan - 86-769-8702-9880
China - Guangzhou - 86-20-8755-8029
China - Hangzhou - 86-571-8792-8115
China - Hong Kong SAR - 852-2943-5100
China - Nanjing - 86-25-8473-2460
China - Qingdao - 86-532-8502-7355
China - Shanghai - 86-21-3326-8000
China - Shenyang - 86-24-2334-2829
China - Shenzhen - 86-755-8864-2200
China - Wuhan - 86-27-5980-5300
China - Xiamen - 86-592-2388138
China - Xian - 86-29-8833-7252
China - Zhuhai - 86-756-3210040
India - Bangalore - 91-80-3090-4444
India - New Delhi - 91-11-4160-8631
India - Pune - 91-20-3019-1500
Japan - Osaka - 81-6-6152-7160
Japan - Tokyo - 81-3-6880-3770
Korea - Daegu - 82-53-744-4301
Korea - Seoul - 82-2-554-7200
Malaysia - Kuala Lumpur - 60-3-6201-9857
Malaysia - Penang - 60-4-227-8870
Philippines - Manila - 63-2-634-9065
Singapore - 65-6334-8870
Taiwan - Hsin Chu - 886-3-5778-366
Taiwan - Kaohsiung - 886-7-213-7830
Taiwan - Taipei - 886-2-2508-8600
Thailand - Bangkok - 66-2-694-1351

11/07/16

Overview

The Serial Memory Single-Wire Evaluation Kit (DM160232) is an easy-to-use interactive user tool to demonstrate the best in class features, functionality and low-power operation of the AT21CS Series Serial EEPROM devices. The evaluation kit is for engineers, developers and decision makers to allow for fast system prototyping using the Single-Wire Interface (SWI) protocol. The Serial Memory Single-Wire Evaluation Kit includes a Graphical User Interface (GUI) which allows the user to configure, demonstrate and personalize the single-wire Serial EEPROM device.

Board Schematics, User's Guide and Other Resources

The hardware schematics and other information relating to the Serial Memory Single-Wire Evaluation Kit can be found in the user's guide for the board, which can be obtained from <http://www.microchip.com/DM160232>.

Evaluation Kit Contents

The Serial Memory Single-Wire Evaluation Kit comes with a USB Base Board (Figure 1), an SWI Socket Board (Figure 2) and five AT21CS01-STUM10-T devices, with one installed in the SWI Socket Board's SOT23 socket.

Operating Requirements

For the Serial Memory Single-Wire Evaluation Kit to function properly, the following hardware and software requirements must be met:

- PC compatible system
- An available USB port on the PC
- Windows® 7 or higher operating systems⁽¹⁾

Note 1: Testing has been performed on a 64-bit Windows® 7 operating system.



Microchip Technology Inc. • 2355 West Chandler Blvd. • Chandler, AZ 85224-6199

www.microchip.com

The Microchip name and logo, the Microchip logo, and MPLAB are registered trademarks of Microchip Technology Incorporated in the U.S.A. and other countries. All other trademarks mentioned herein are property of their respective companies. © 2017, Microchip Technology Incorporated, Printed in the U.S.A. All Rights Reserved. 5/17

DS20005780A

Serial Memory Single-Wire Evaluation Kit

Quick Start Guide

Evaluation Kit Setup

The Serial Memory Single-Wire Evaluation Kit comes factory programmed with the latest version of the USB Base Board firmware loaded.

To start using the evaluation kit, please download the latest version of the Graphical User Interface (GUI) and the USB driver which can be obtained from <http://www.microchip.com/DM160232>.

Once the GUI and USB driver have been installed, simply plug the USB Base Board into the SWI Socket Board using the H1 and J1 headers (Figure 3), and plug the USB Base Board into an unused USB port. Launch the GUI by double clicking on the desktop icon or by finding the program under the Microchip program folder.

FIGURE 1: USB BASE BOARD (02-10682)

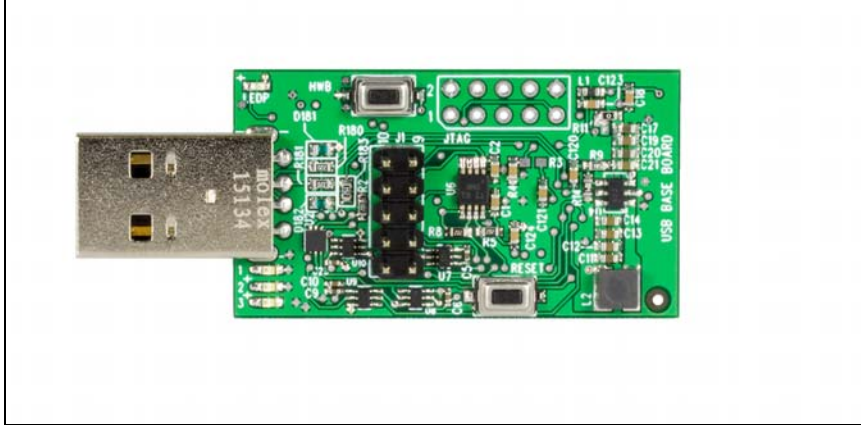


FIGURE 2: SWI SOCKET BOARD (02-10681)

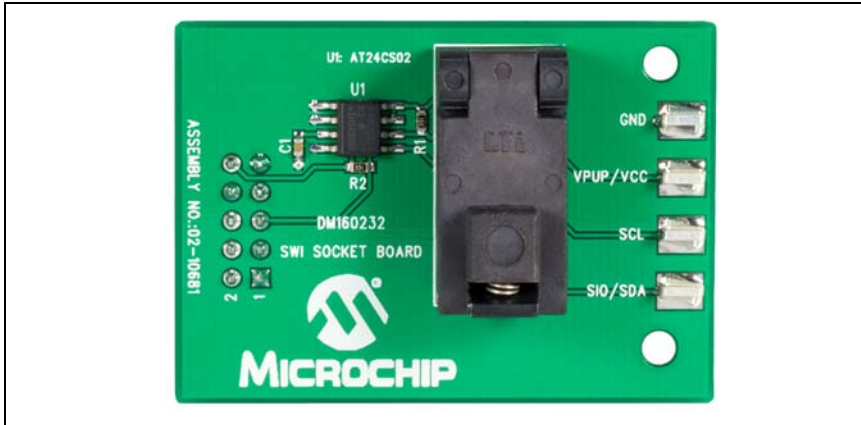


FIGURE 3: DM160232 USB BASE BOARD AND SWI SOCKET BOARD

