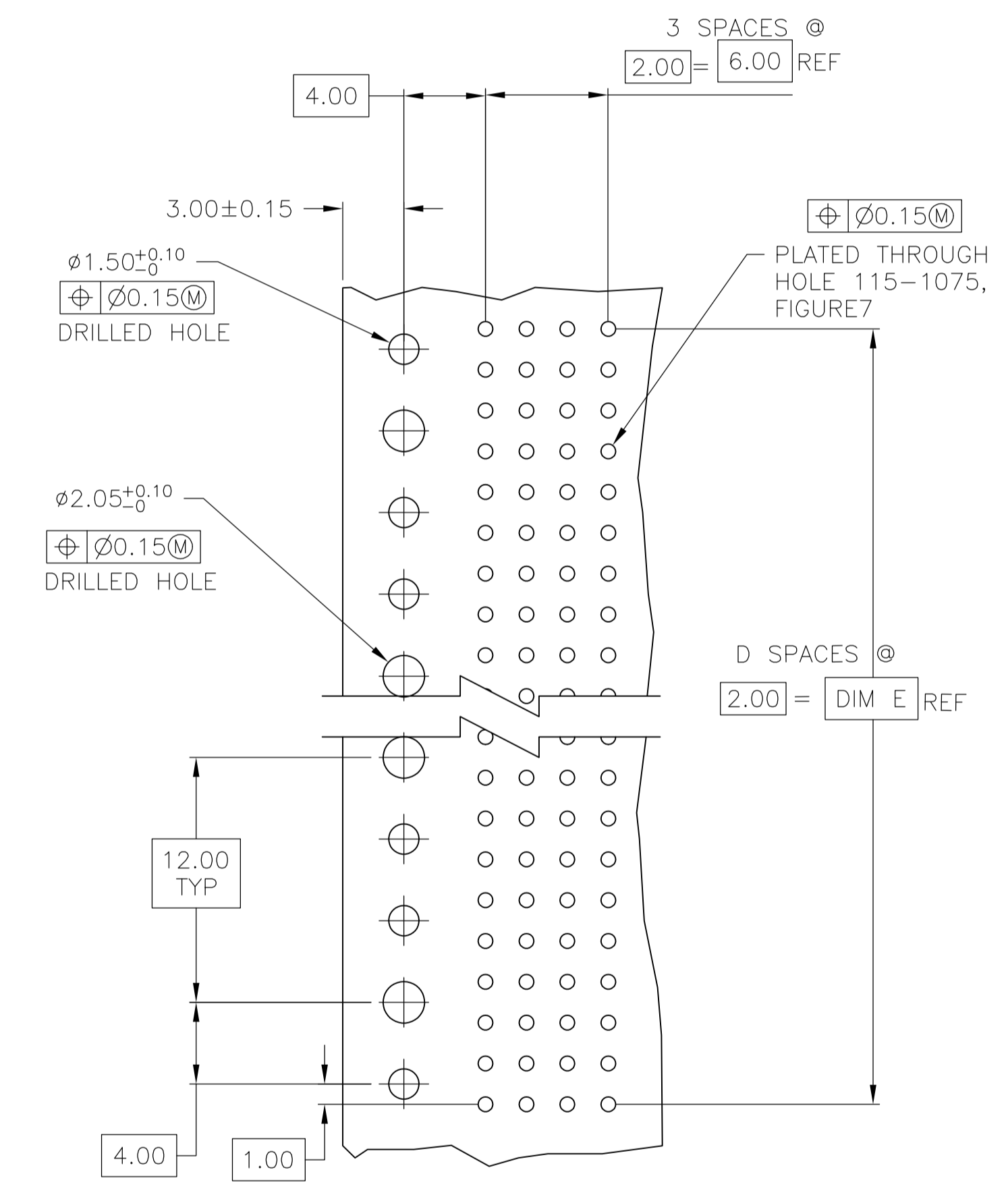
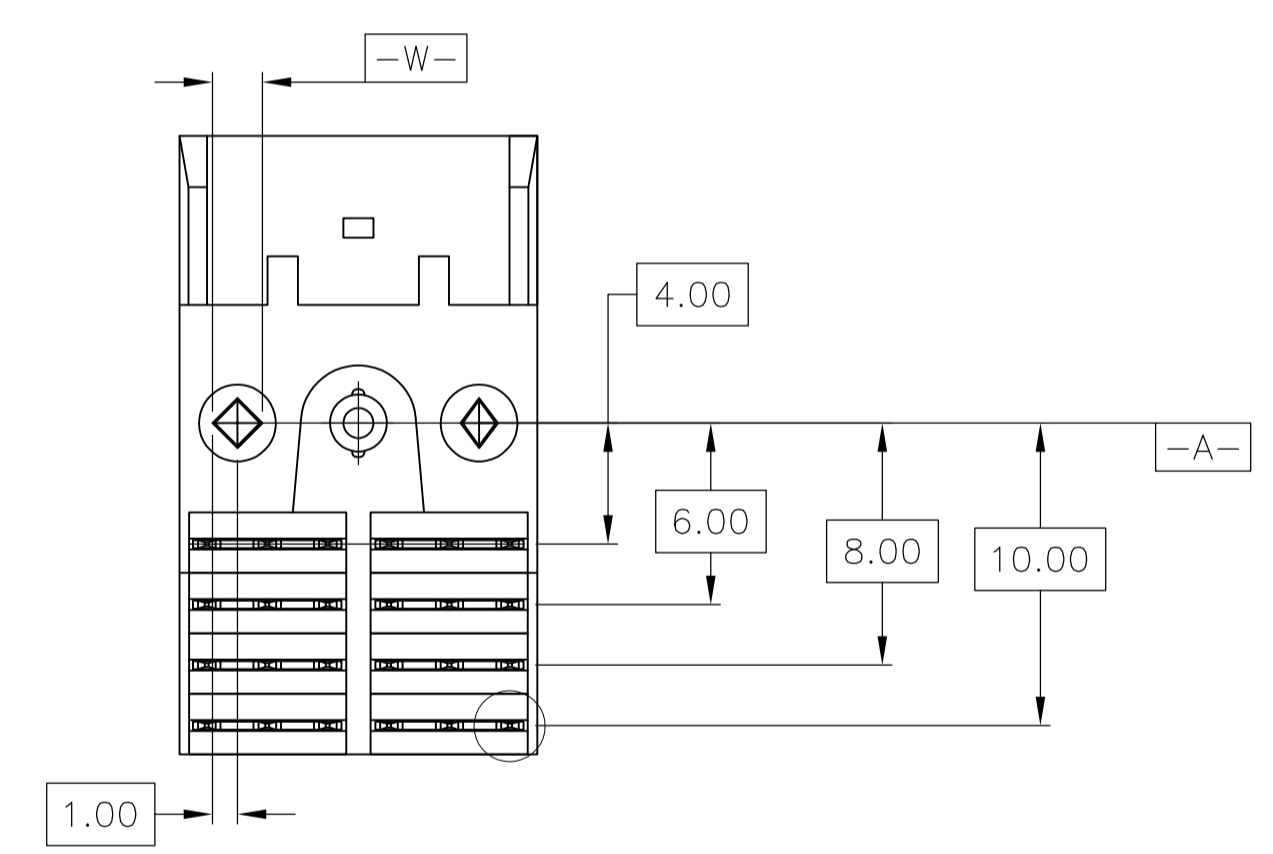
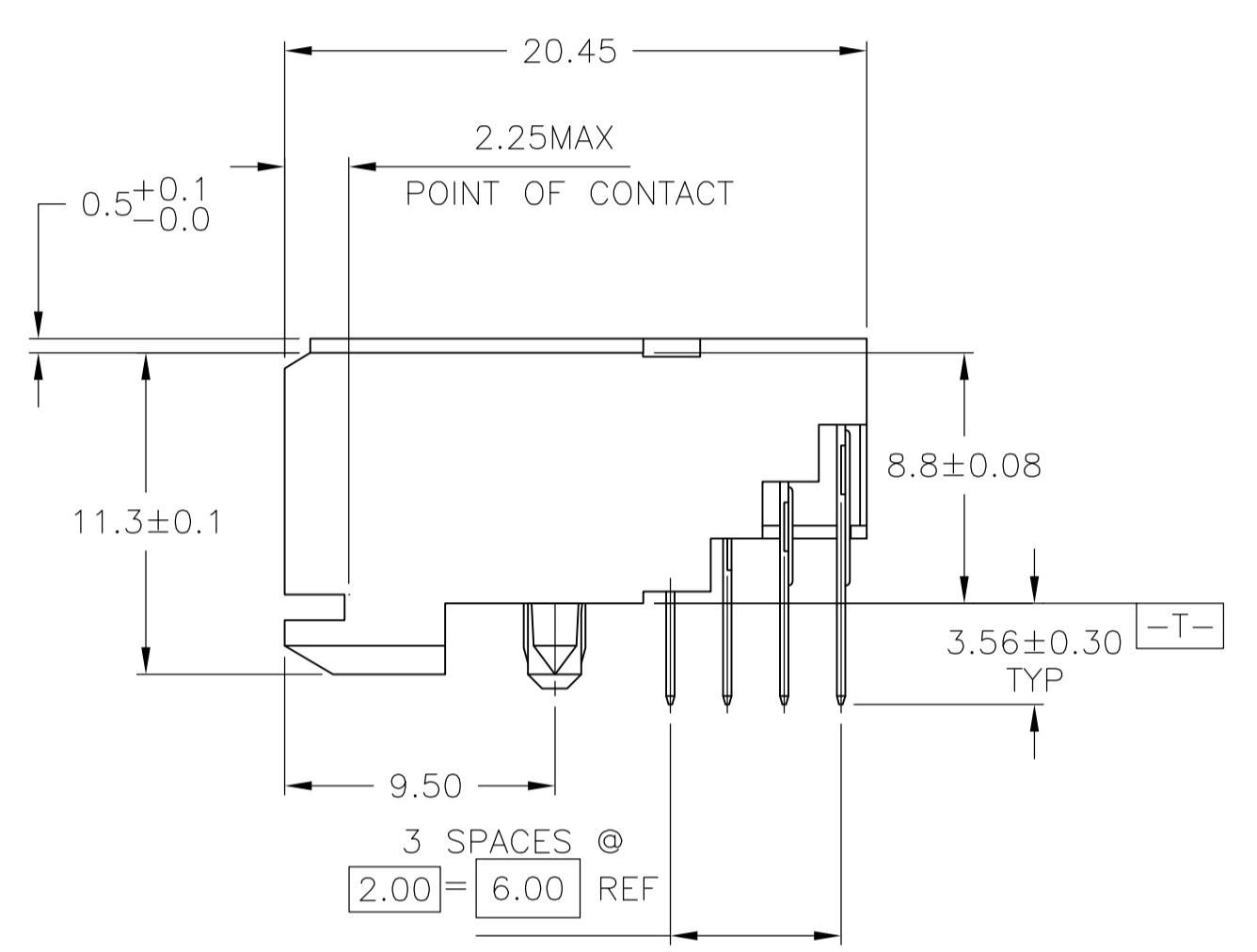
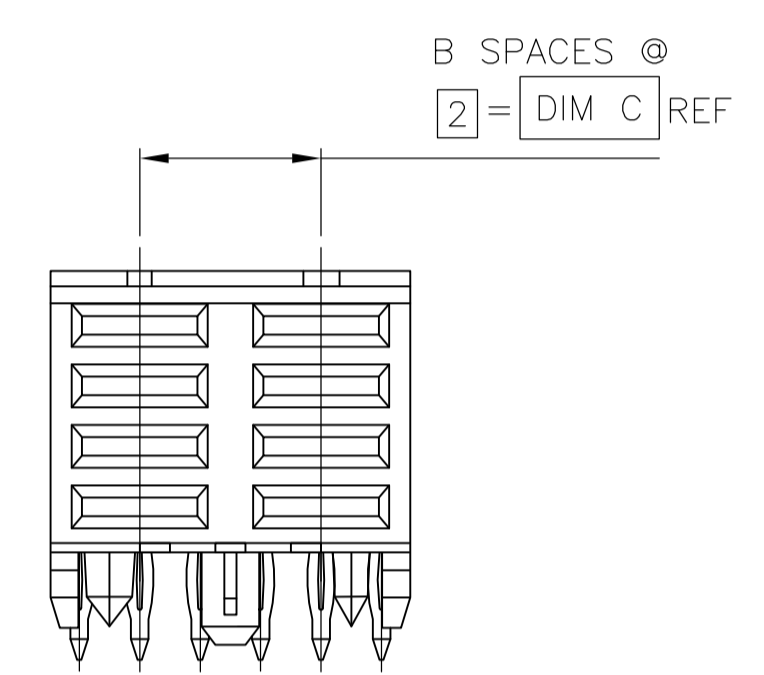
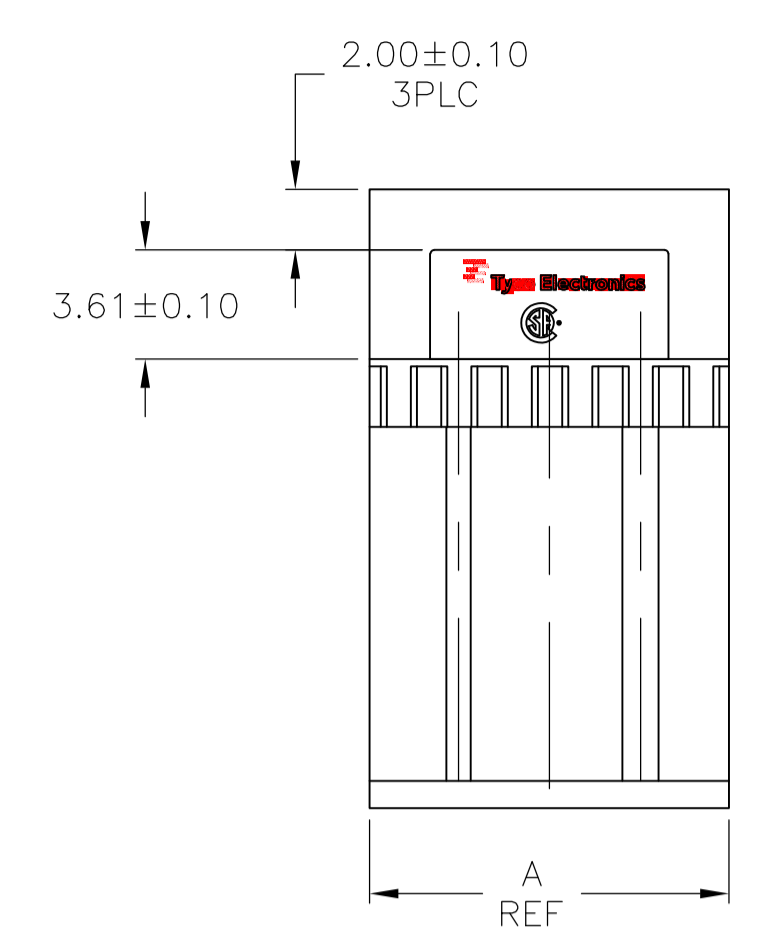
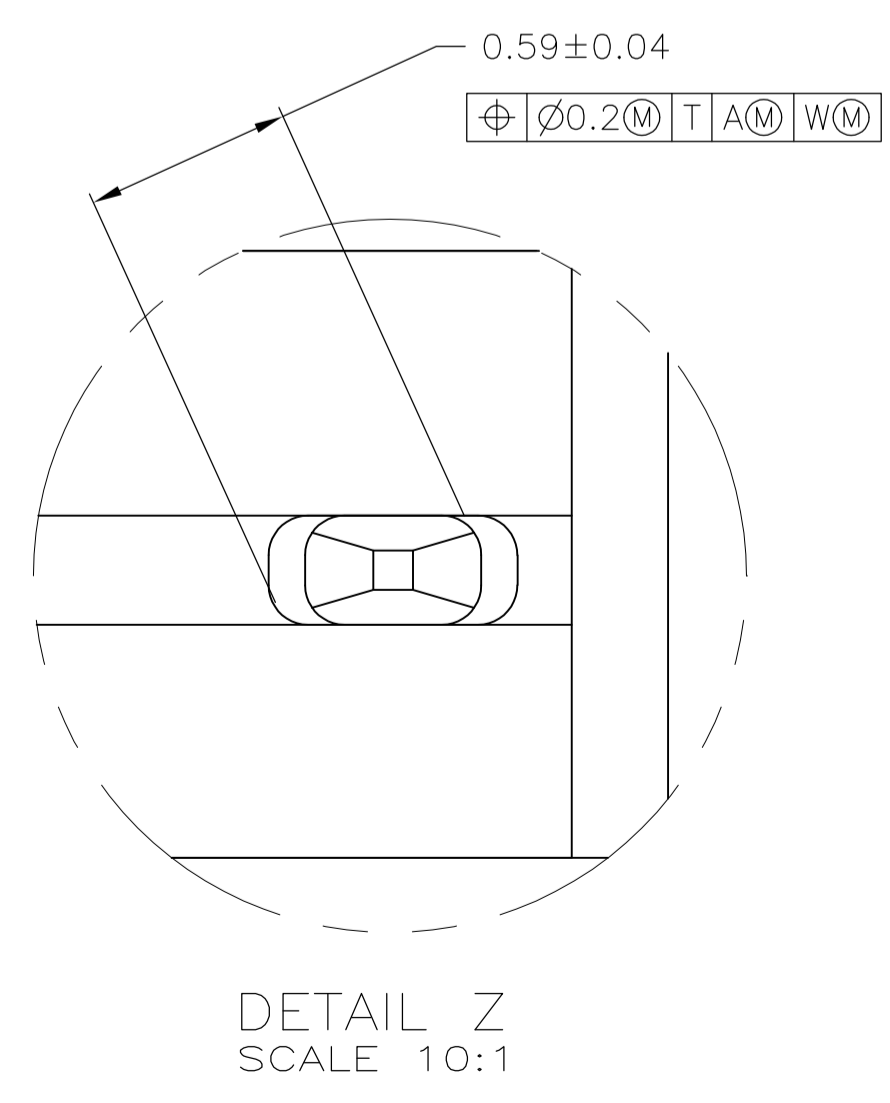
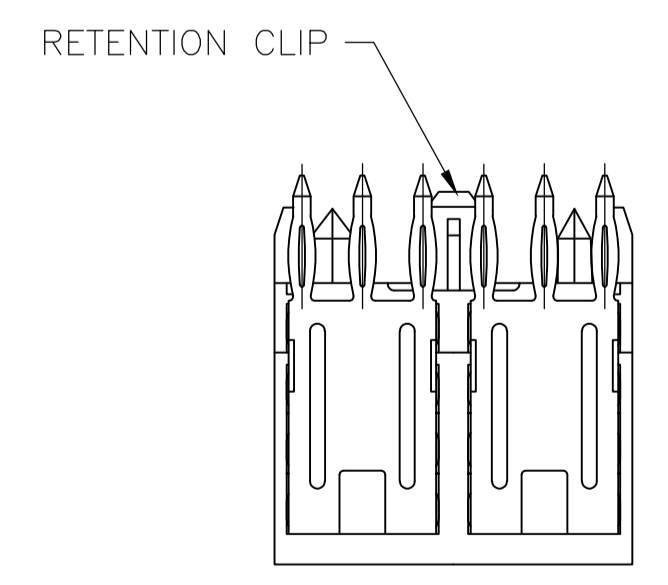


LOC		DIST		REVISIONS			
AD	00	REV	DATE	BY	CHK	APPV	
A	NEW DRAWING		23DEC11	KH	AS		

- 1 HOUSING MATERIAL: LIQUID CRYSTAL POLYMER.
- 2 CONTACT MATERIAL: PHOSPHOR-BRONZE.
- 3 CONTACT FINISH:(D)
 UNDERPLATE (ENTIRE CONTACT):
 0.00127 MIN NICKEL PER SAE-AMS-QQ-N-290
 ON MATING SURFACES:
 0.00076 MIN GOLD PER ASTM B488 OVER UNDERPLATE.
 ON LEADS:
 0.00127 MIN MATTE TIN PER ASTM B545 OVER UNDERPLATE.
 LUBRICATION (MIN MATING SURFACES):
 SURFACE CONDITIONER AFTER PLATING.



RECOMMENDED CIRCUIT PATTERN
 PER IPC-D300 TYPE II, CLASS C
 (COMPONENT SIDE)



DETAIL Z
 SCALE 10:1

10	5	6.00	1	11.88	3	8	5223174-1
E	D	C	B	A	FINISH	NO OF POSN	PART NUMBER
THIS DRAWING IS A CONTROLLED DOCUMENT.				DIN KIRAN HOLAL 23DEC11		TE Connectivity	
DIMENSIONS: mm				CHK SHARPE ALEXANDER 23DEC11		NAME	
TOLERANCES UNLESS OTHERWISE SPECIFIED:				APPV SHARPE ALEXANDER 23DEC11		PRODUCT SPEC	
0 PLC ± -				APPLICATION SPEC		ASSEMBLY, RECEPTACLE, 4 ROW, PRESS-FIT, 3.56, POWER, 2mm FB	
1 PLC ± -				SIZE		RESTRICTED TO	
2 PLC ± 0.13				CAGE CODE		DRAWING NO	
3 PLC ± -				WEIGHT		A1 00779 C=5223174	
4 PLC ± -				SCALE		SHEET 1 OF 1	
ANGLES ± -				CUSTOMER DRAWING		REV A	