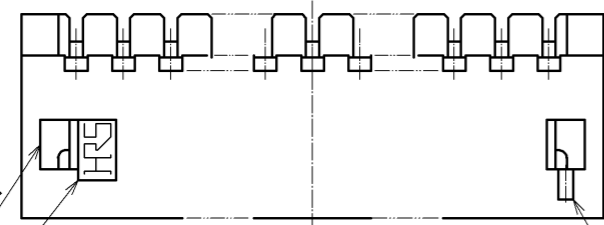
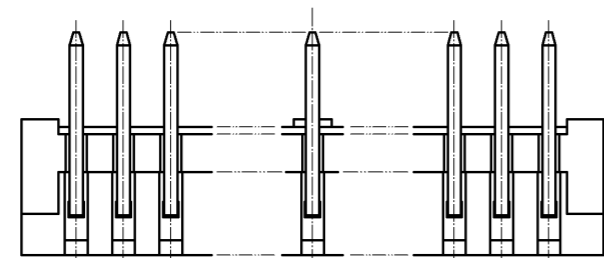
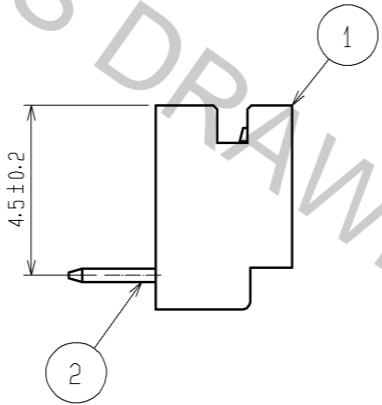
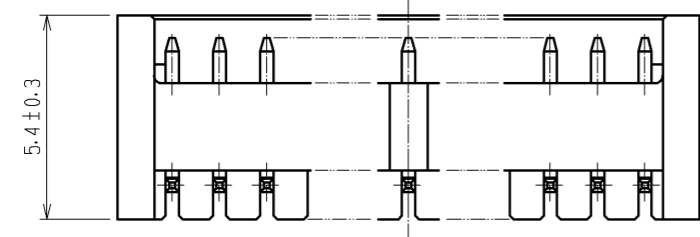


CAVITY No.



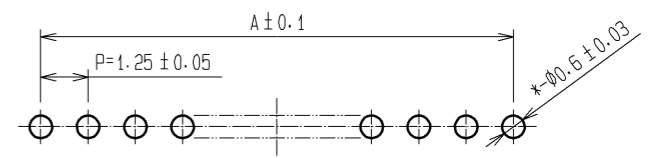
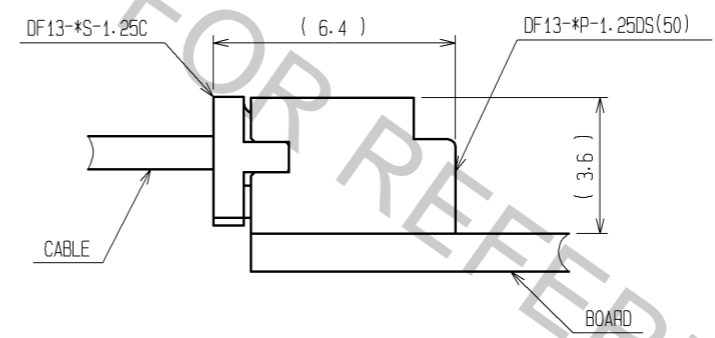
HRS MARKING

POLARIZATION MARKING

| PART No. | CODE No. | NUMBER OF CONTACTS | A | B | C |
|---------------------|-----------------|--------------------|-------|-------|-------|
| DF13- 2P-1.25DS(50) | CL536-0151-7-50 | 2 | 1.25 | 3.15 | 4.15 |
| DF13- 3P-1.25DS(50) | CL536-0152-0-50 | 3 | 2.50 | 4.40 | 5.40 |
| DF13- 4P-1.25DS(50) | CL536-0153-2-50 | 4 | 3.75 | 5.65 | 6.65 |
| DF13- 5P-1.25DS(50) | CL536-0154-5-50 | 5 | 5.00 | 6.90 | 7.90 |
| DF13- 6P-1.25DS(50) | CL536-0155-8-50 | 6 | 6.25 | 8.15 | 9.15 |
| DF13- 7P-1.25DS(50) | CL536-0156-0-50 | 7 | 7.50 | 9.40 | 10.40 |
| DF13- 8P-1.25DS(50) | CL536-0157-3-50 | 8 | 8.75 | 10.65 | 11.65 |
| DF13- 9P-1.25DS(50) | CL536-0158-6-50 | 9 | 10.00 | 11.90 | 12.90 |
| DF13-10P-1.25DS(50) | CL536-0159-9-50 | 10 | 11.25 | 13.15 | 14.15 |
| DF13-11P-1.25DS(50) | CL536-0160-8-50 | 11 | 12.50 | 14.40 | 15.40 |
| DF13-12P-1.25DS(50) | CL536-0161-0-50 | 12 | 13.75 | 15.65 | 16.65 |
| DF13-14P-1.25DS(50) | CL536-0163-6-50 | 14 | 16.25 | 18.15 | 19.15 |
| DF13-15P-1.25DS(50) | CL536-0164-9-50 | 15 | 17.50 | 19.40 | 20.40 |

2 APPLICATION FIGURE

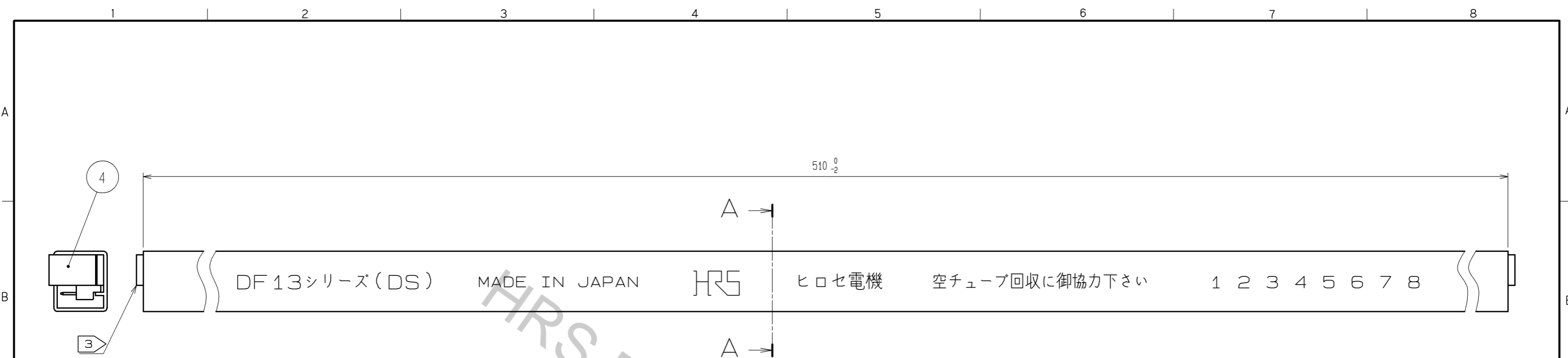
RECOMMENDED PATTERN (BOARD THICKNESS 1mm)



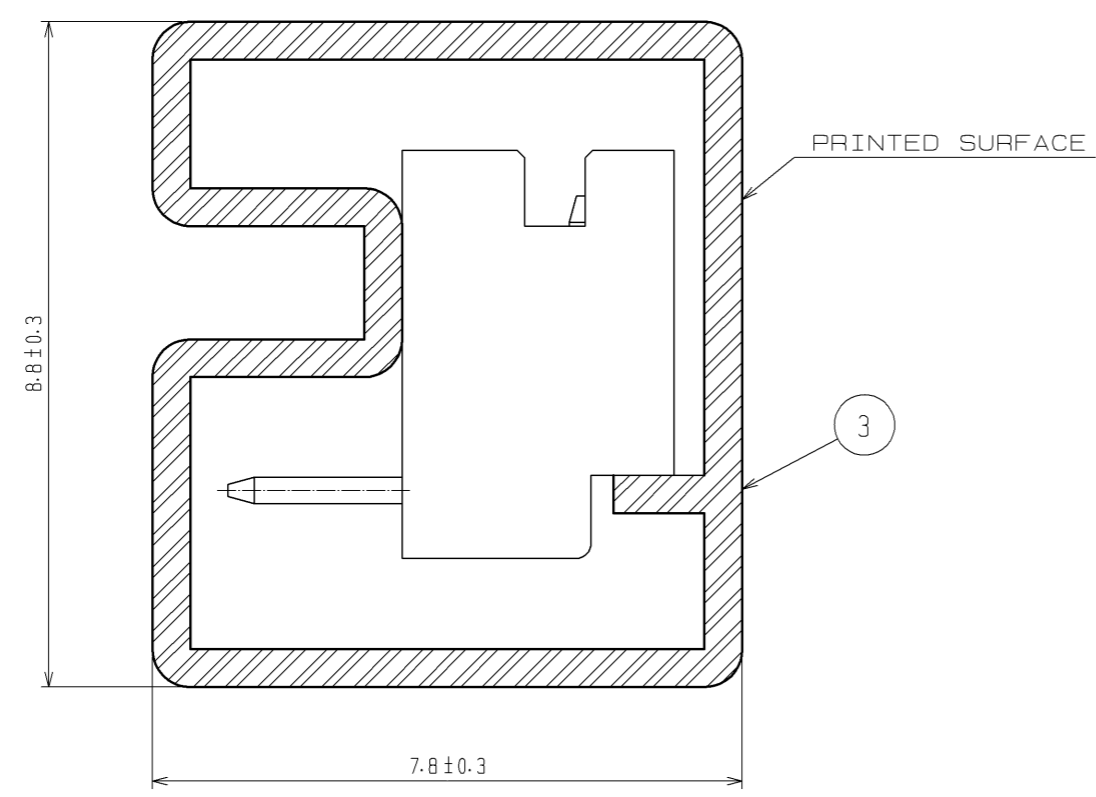
NOTE 1 WHEN THIS CONNECTOR HAS TWO OR THREE CONTACTS, THE LOCK OF CONNECTOR SHALL BE SET AT THE CENTER OF HOUSING. IN CASE THAT THE NUMBER OF CONTACTS IS MORE THAN FOUR, THE TWO LOCKS SHALL BE SET IN ACCORDANCE WITH THE LEFT DRAWINGS.

2 WHEN THIS CONNECTOR MATES WITH DF13-*S-1.25C, THE MATING LENGTH IS 6.4mm.

| 2 | BRASS | SURFACE:GOLD PLATED 0.2µm min. UNDER:NICKLE PLATED 0.5µm min. | 4 | ELASTOMER | STOPPER, GRAY |
|-------|-----------|--|-----------------------------------|-----------|---------------------------------|
| 1 | POLYAMIDE | BEIGE(NATURAL), UL94V-0 | 3 | P S | ELECTROSTATIC PROTECTION, CLEAR |
| NO. | MATERIAL | FINISH, REMARKS | NO. | MATERIAL | FINISH, REMARKS |
| UNITS | mm | SCALE | 5 : 1 | COUNT | △ |
| HRS | | HIROSE ELECTRIC CO., LTD. | APPROVED : TS. SAKATA 08.11.17 | | DRAWING NO. EDC3-162420-04 |
| | | | CHECKED : TS. KUMAZAWA 08.11.14 | | PART NO. DF13-*P-1.25DS(50) |
| | | | DESIGNED : SN. KOBAYASHI 08.11.14 | | CODE NO. CL536- |
| | | | DRAWN : YK. NAKATSU 08.11.11 | | DATE |



A-A (10:1)



| PARTS No. | CODE No. | NUMBER OF CONTACTS | QUANTITY OF CONNECTOR |
|---------------------|-----------------|--------------------|-----------------------|
| DF13- 2P-1.25DS(50) | CL536-0151-7-50 | 2 | 115 |
| DF13- 3P-1.25DS(50) | CL536-0152-0-50 | 3 | 89 |
| DF13- 4P-1.25DS(50) | CL536-0153-2-50 | 4 | 72 |
| DF13- 5P-1.25DS(50) | CL536-0154-5-50 | 5 | 61 |
| DF13- 6P-1.25DS(50) | CL536-0155-8-50 | 6 | 52 |
| DF13- 7P-1.25DS(50) | CL536-0156-0-50 | 7 | 46 |
| DF13- 8P-1.25DS(50) | CL536-0157-3-50 | 8 | 41 |
| DF13- 9P-1.25DS(50) | CL536-0158-6-50 | 9 | 37 |
| DF13-10P-1.25DS(50) | CL536-0159-9-50 | 10 | 34 |
| DF13-11P-1.25DS(50) | CL536-0160-8-50 | 11 | 31 |
| DF13-12P-1.25DS(50) | CL536-0161-0-50 | 12 | 29 |
| DF13-14P-1.25DS(50) | CL536-0163-6-50 | 14 | 25 |
| DF13-15P-1.25DS(50) | CL536-0164-9-50 | 15 | 23 |

NOTE ③: MAGAZINE CASE HAS ONE STOPPER AT EACH END.
 ④: THOSE CONNECTORS SHALL BE ON SALED IN ACCORDANCE WITH THE MULTIPLE QUANTITY OF CONNECTORS.

| | | |
|------------|-------------|--------------------|
| HRS | DRAWING NO. | EDC3-162420-04 |
| | PART NO. | DF13-*P-1.25DS(50) |
| | CODE NO. | CL536- |