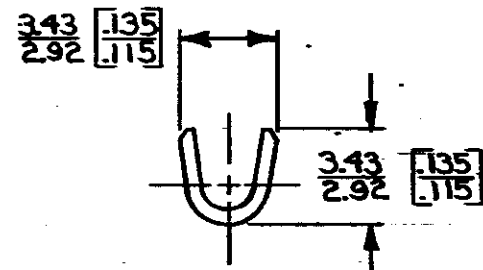
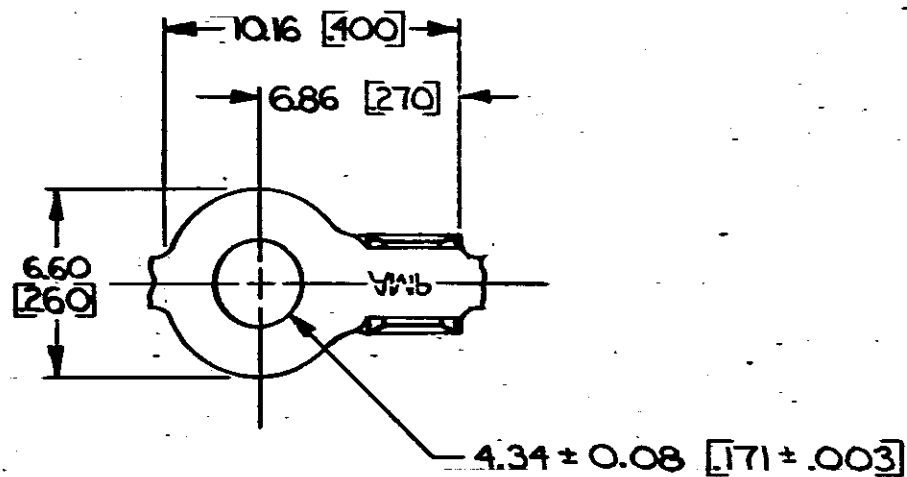
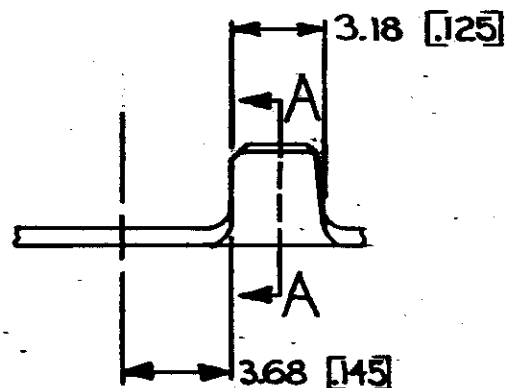


© COPYRIGHT 1969 BY AMP INCORPORATED, HARRISBURG, PA.  
 ALL INTERNATIONAL RIGHTS RESERVED. AMP INCORPORATED PRODUCTS  
 COVERED BY U. S. AND FOREIGN PATENTS AND/OR PATENTS PENDING.

		REVISIONS				
P	F	ZONE	LTR	DESCRIPTION	DATE	APPROVED
✓	✓		A	REDRAWN & REVISED A-3943	J.M. 4/26/78	
✓	✓		B	REVISED PER A-6127	9/19/83	SS/G4
✓	✓		C	REV PER AF-4968	Yanf 7/2/87	



SECT A-A



- 1. CONTINUOUS STRIP ON REELS
- 2. DIMENSIONS IN BRACKETS ARE IN INCHES.

**METRIC**

M4 #8	0.5-1.4 mm <sup>2</sup> [20-16]	TIN	0.51 [020] BRASS	40812
STUD SIZE	WIRE RANGE	FINISH	MATERIAL	PART NO
UNLESS OTHERWISE SPECIFIED DIMENSIONS ARE IN mm TOLERANCES ON: DECIMALS ±0.38 [015] ANGLES ±1°0'		CONTRACT NO DR <i>S. Mogano</i> 4/26/78 CHK <i>Wagon &amp; Kover</i> 7-25-78 APPD <i>R.P.F. Smith</i> 8-10-78 APPD <i>Co. 7 links</i> 8-10-78 DSGN APPD OTHER APPD		AMP INCORPORATED Harrisburg, Pa
MATERIAL SEE TABLE		NAME RING		
FINISH SEE TABLE		SIZE B	CODE IDENT NO 00779	DRAWING NO 40812
		SCALE	SHEET	