

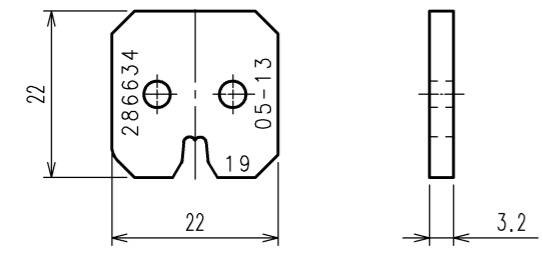
DRAWING FOR REFERENCE: This is subject to change without notice

TO
PE

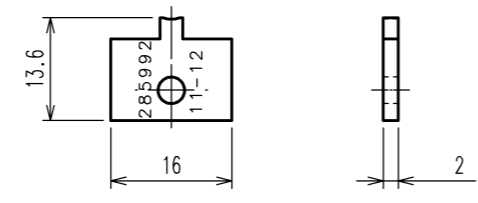
2016/10/24 23:58:30 (JST) Racheille Sheffer

1 2 3 4 5 6 7 8

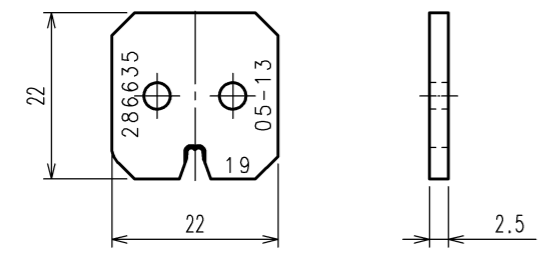
INSULATION CRIMPER



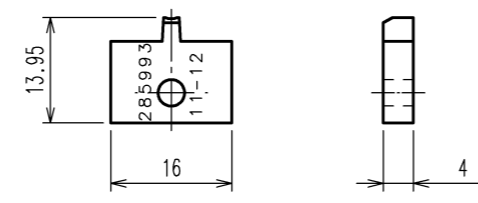
INSULATION ANVIL



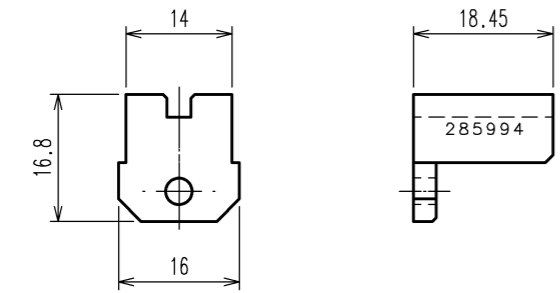
WIRE CRIMPER



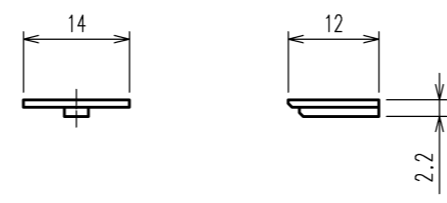
WIRE ANVIL



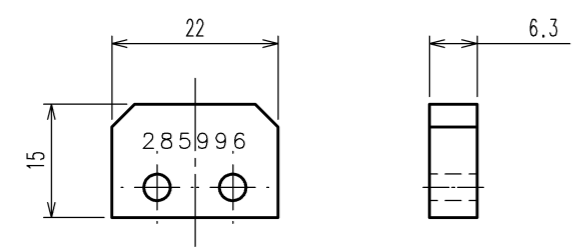
CONTACT HOLDER A



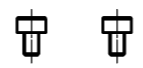
CONTACT HOLDER C



CRIMPER SPACER



SCREW(M2x5) : TWO



HEXAGON WRENCH(M2)



COUNT	DESCRIPTION OF REVISIONS	BY	CHKD	DATE	COUNT	DESCRIPTION OF REVISIONS	BY	CHKD	DATE
△				..	△				..
△				..	△				..
△				..	△				..

Notes 1.This drawing shows PQ50A-19(2517)-A (CL0250-1017-1).

2.The following table shows the specification of this unit.

INSULATION CRIMPER	ONE
WIRE CRIMPER	ONE
INSULATION ANVIL	ONE
WIRE ANVIL	ONE
CONTACT HOLDER A	ONE
CONTACT HOLDER C	ONE
CRIMPER SPACER	ONE
SCREW(M2x5)	TWO
HEXAGON WRENCH(M2)	ONE

2			4		
1			3		
NO.	MATERIAL	FINISH, REMARKS	NO.	MATERIAL	FINISH, REMARKS
CODE NO.(OLD) CL			DRAWN H.KUDO 13.5.13	DESIGNED M.TAKAHASHI 13.5.13	CHECKED S.OIZUMI 13.5.13
			APPROVED T.IITO 13.5.13	RELEASED ..	
DRAWING NO. EDC3-276372			PART NO. PQ50A-19(2517)-A		
SCALE 1 : 1			CODE NO. CL250-1017-1		
UNITS mm			HRS HIROSE ELECTRIC CO., LTD		
					1/1

1 2 3 4 5 6 7 8