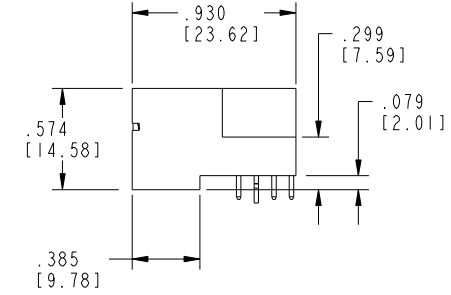
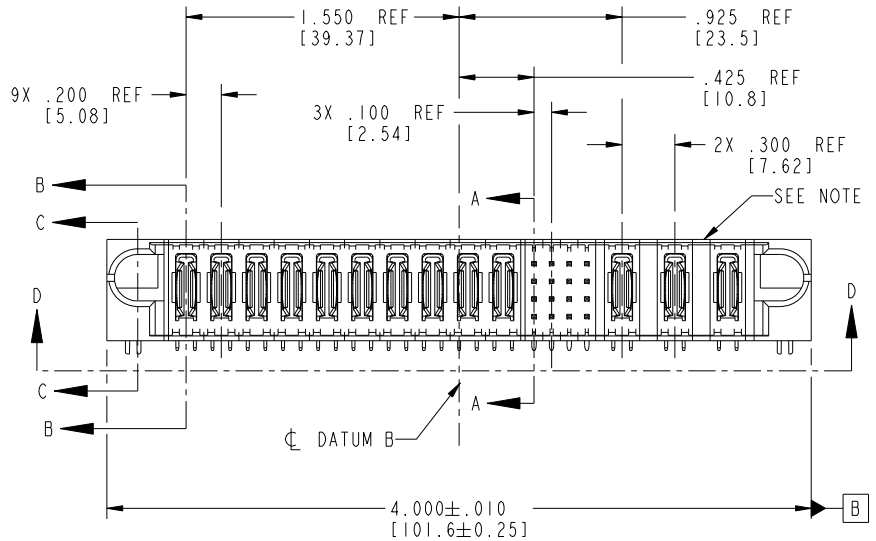


Tous droits strictement reserves. Reproduction ou communication a des tiers interdite sous quelque forme que ce soit sans autorisation écrite du propriétaire. Propriete de c FCI. Droits de reproduction FCI.



All rights strictly reserved. Reproduction or issue to third parties in any form whatever is not permitted without written authority from the proprietor. Property of FCI. Copyright FCI.

PRODUCT NO.	ROWS	POWER										SIGNAL				POWER			E2	
		E1	P1	P2	P3	P4	P5	P6	P7	P8	P9	P10	1	2	3	4	P11	P12		P13
51939-003 NOTE:3	D C B A	HA	PA	PA	PA	PA	PA	PA	PA	PA	PA	PA	U	U	U	U	PA	PA	PA	HA



CODE	DIM "M"	MATING LENGTH	CONTACT TYPE
H	.220	[5.59]	SIGNAL
R	.270	[6.86]	SIGNAL
S	.270	[6.86]	SIGNAL
T	.270	[6.86]	SIGNAL
U	.270	[6.86]	SIGNAL
PA	N/A	[N/A]	POWER
HA	N/A	[N/A]	HOLD-DOWN

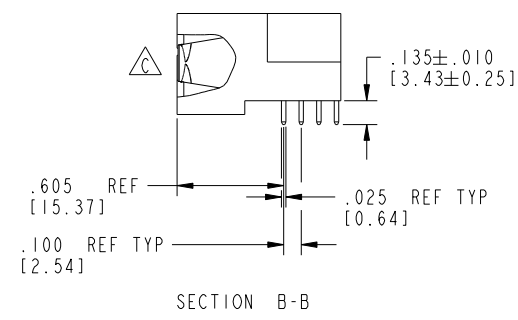
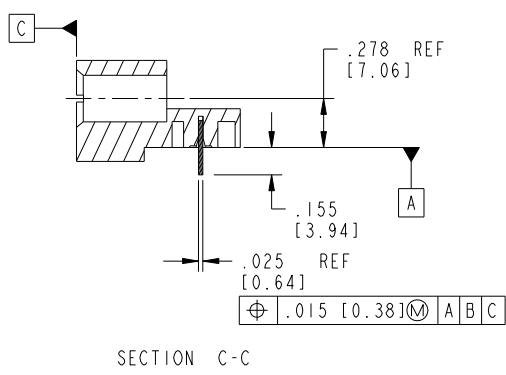
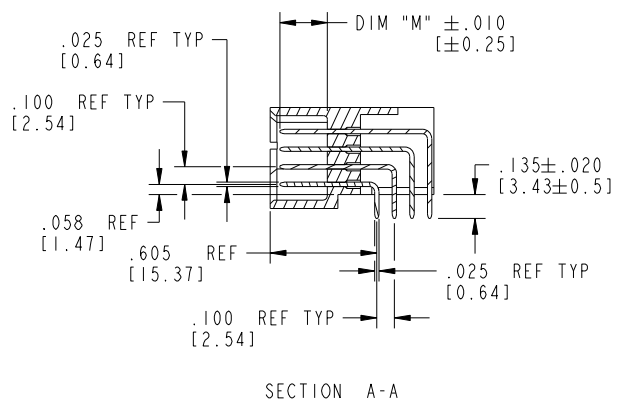
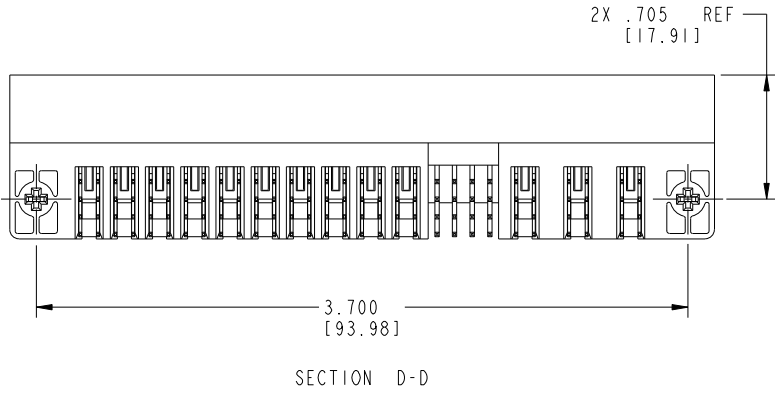
mat'l code				SEE NOTE 2		tolerances unless otherwise specified		CUSTOMER		FCI		www.fciconnect.com	
ltr	ecn no.	dr	date	linear	.XX±.01/0.X±0.3	projection	1	COPY		title 10P + 16S + 3ACP RIGHT ANGLE SOLDER HEADER			
A	V12519	JWS	11/1/01	angles	.XXX±.005/0.XX±0.13	INCH/MM	1	product family PwrBlade		code 213		size	
B	DG05-0417	CS	10/25/05		.XXX±.002/0.XXX±0.051	scale	1:1	product size		dwg no 51939-003		sheet 1 of 4	
C	DG08-0273	WD	12/22/08		0°±2°			product family		code		sheet	
				dr	J. SHAFFER 11/1/01			product size		dwg no		sheet	
				enr	E. TREECE 11/1/01			product size		dwg no		sheet	
				chr	E. TREECE 11/1/01			product size		dwg no		sheet	
				appd	E. TREECE 11/1/01			product size		dwg no		sheet	
sheet index		revision sheet		C	C	C	C	product size		dwg no		sheet	
		1 2		C	C	C	C	product size		dwg no		sheet	

1 | 2 | 3 | 4 | Pro/E | cage code 22526

Tous droits strictement reserves. Reproduction ou communication a des tiers interdite sous quelque forme que ce soit sans autorisation écrite du propriétaire. Propriete de c FCI. Droits de reproduction FCI.

All rights strictly reserved. Reproduction or issue to third parties in any form whatsoever is not permitted without written authority from the proprietor. Property of FCI. Copyright FCI.

PRODUCT NUMBER  
51939-003\_\_  
NOTE: 3

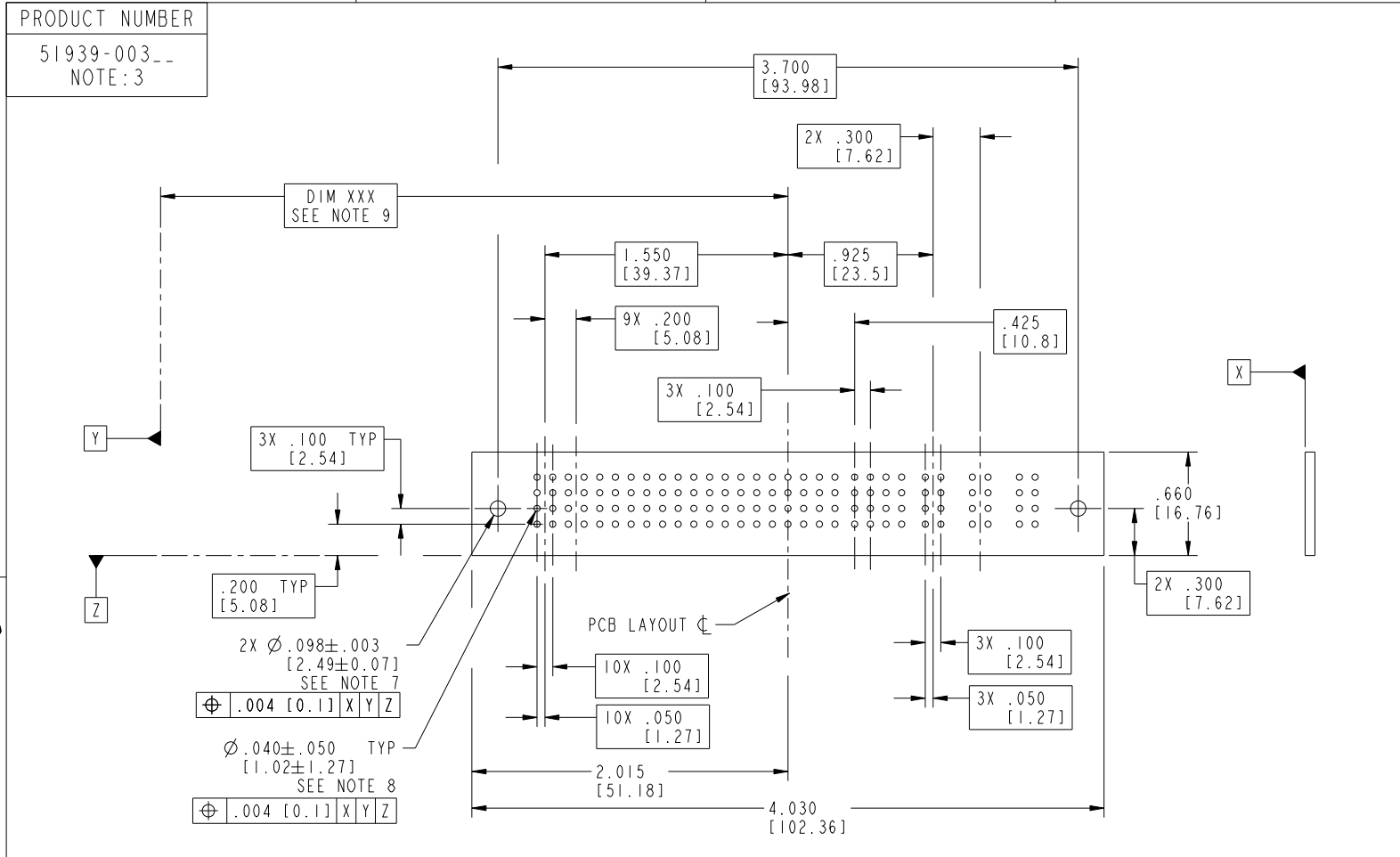


mat'l code		SEE NOTE 2		tolerances unless otherwise specified		CUSTOMER		FCI	
ltr	ecn no.	dr	date	linear	.XX±.01/O.X±0.3	COPY		www.fciconnect.com	
C					.XXX±.005/O.XX±0.13	projection		title	
				angles	.XXX±.0020/O.XXX±0.051	INCH/MM		10P + 16S + 3ACP	
				dr	0°±2°	scale		RIGHT ANGLE SOLDER HEADER	
				enr	J. SHAFFER 11/11/01	1:1		product family	
				chr	E. TREECE 11/11/01	A		PwrBlade	
				appd	E. TREECE 11/11/01	size		code	
sheet index	revision sheet					dwg no		213	
						51939-003		sheet	
						A		2 of 4	
						cage code		22526	

Tous droits strictement réservés. Reproduction ou communication à des tiers interdite sous quelque forme que ce soit sans autorisation écrite du propriétaire. Propriété de c FCI. Droits de reproduction FCI.



All rights strictly reserved. Reproduction or issue to third parties in any form whatsoever is not permitted without written authority from the proprietor. Property of FCI. Copyright FCI.



RECOMMENDED PCB LAYOUT

mat'l code		SEE NOTE 2		tolerances unless otherwise specified		CUSTOMER		 www.fciconnect.com	
ltr	ecn no.	dr	date	linear	$.XX \pm .01 / 0.X \pm 0.3$ $.XXX \pm .005 / 0.XX \pm 0.13$ $.XXX \pm .0020 / 0.XXX \pm 0.051$	COPY		title	
C				angles	$0^\circ \pm 2^\circ$	 INCH/MM		10P + 16S + 3ACP RIGHT ANGLE SOLDER HEADER	
		dr	J. SHAFFER	11/11/01		product family		PwrBlade	code
		enr	E. TREECE	11/11/01		size		dwg no	213
		chr	E. TREECE	11/11/01		scale		51939-003	sheet
		appd	E. TREECE	11/11/01		1:1		3 of 4	
sheet index	revision sheet								

cage code 22526

Tous droits strictement reserves. Reproduction ou communication a des tiers interdite sous quelque forme que ce soit sans autorisation écrite du propriétaire. Propriete de c FCI. Droits de reproduction FCI.



All rights strictly reserved. Reproduction or issue to third parties in any form whatever is not permitted without written authority from the proprietor. Property of FCI. Copyright FCI.

PRODUCT NUMBER  
51939-003\_\_  
NOTE: 3

NOTES:

1. DIMENSIONS AND TOLERANCES ARE IN ACCORDANCE WITH ASME Y14.5M, 1994 UNLESS OTHERWISE SPECIFIED.

CONNECTORS NOTES:

② HOUSING MATERIAL: UL 94 V-0 GLASS FILLED HIGH TEMP THERMO PLASTIC  
POWER CONTACT MATERIAL: COPPER ALLOY  
SIGNAL PIN MATERIAL: COPPER ALLOY

△③ SEE ITEM 1 & 2 IN PRINT 10064183 FOR PLATING SPEC OF 51939-003 AND 51939-003LF RESPECTIVELY.

④ "MANUFACTURER" NAME, P/N, AND DATE CODE TO APPEAR ON THIS SURFACE.

⑤ PRODUCT SPECIFICATION GS-12-149.

PCB - NOTES:

⑥ ALL HOLE DIAMETERS ARE FINISHED HOLE SIZE.

7. HOLD DOWN THROUGH HOLES ARE UNPLATED.

8.  $\varnothing .0453 \pm 0.0010$  [ $1.151 \pm 0.025$ ] DRILLED HOLES PLATED WITH  $0.0003$  [ $0.008$ ] MIN SnPb OVER  $.001$  [ $0.03$ ] TO  $.003$  [ $0.08$ ] Cu PLATING TO ACHIEVE  $\varnothing .040 \pm .003$  [ $1.02 \pm .07$ ] HOLE.

9. "DIM XXX" TO BE DETERMINED BY THE CUSTOMER.

10. A △ SYMBOL WILL BE NEXT TO ANY DIMENSION, VIEW, OR NOTE WHICH HAS BEEN MODIFIED WITH THE CURRENT DRAWING REVISION.

mat'l code		SEE NOTE 2		tolerances unless otherwise specified		CUSTOMER		FCI		www.fciconnect.com	
ltr	ecn no.	dr	date	linear	$.XX \pm .01 / 0.X \pm 0.3$	COPY		projection		title	
C					$.XXX \pm .005 / 0.XX \pm 0.13$					10P + 16S + 3ACP RIGHT ANGLE SOLDER HEADER	
				angles	$.XXX \pm .0020 / 0.XXX \pm 0.051$					product family	
				dr	$0^{\circ} \pm 2^{\circ}$	INCH/MM		scale		PwrBlade	
				enr	J. SHAFFER 11/11/01	1:1		size		code	
				chr	E. TREECE 11/11/01	A		dwg no		213	
				appd	E. TREECE 11/11/01			51939-003		sheet	
sheet index		revision sheet						4 of 4		4	

cage code 22526