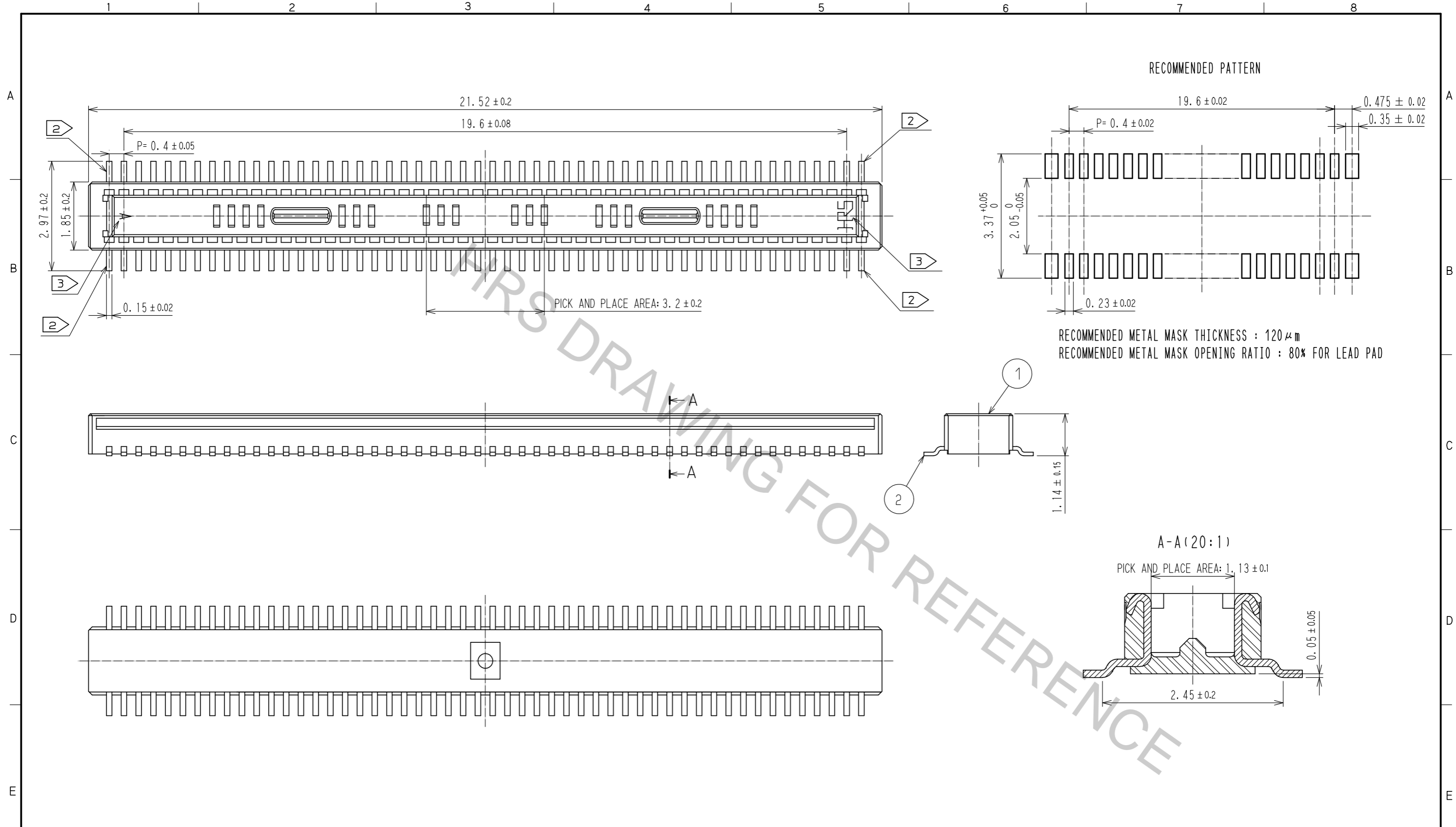


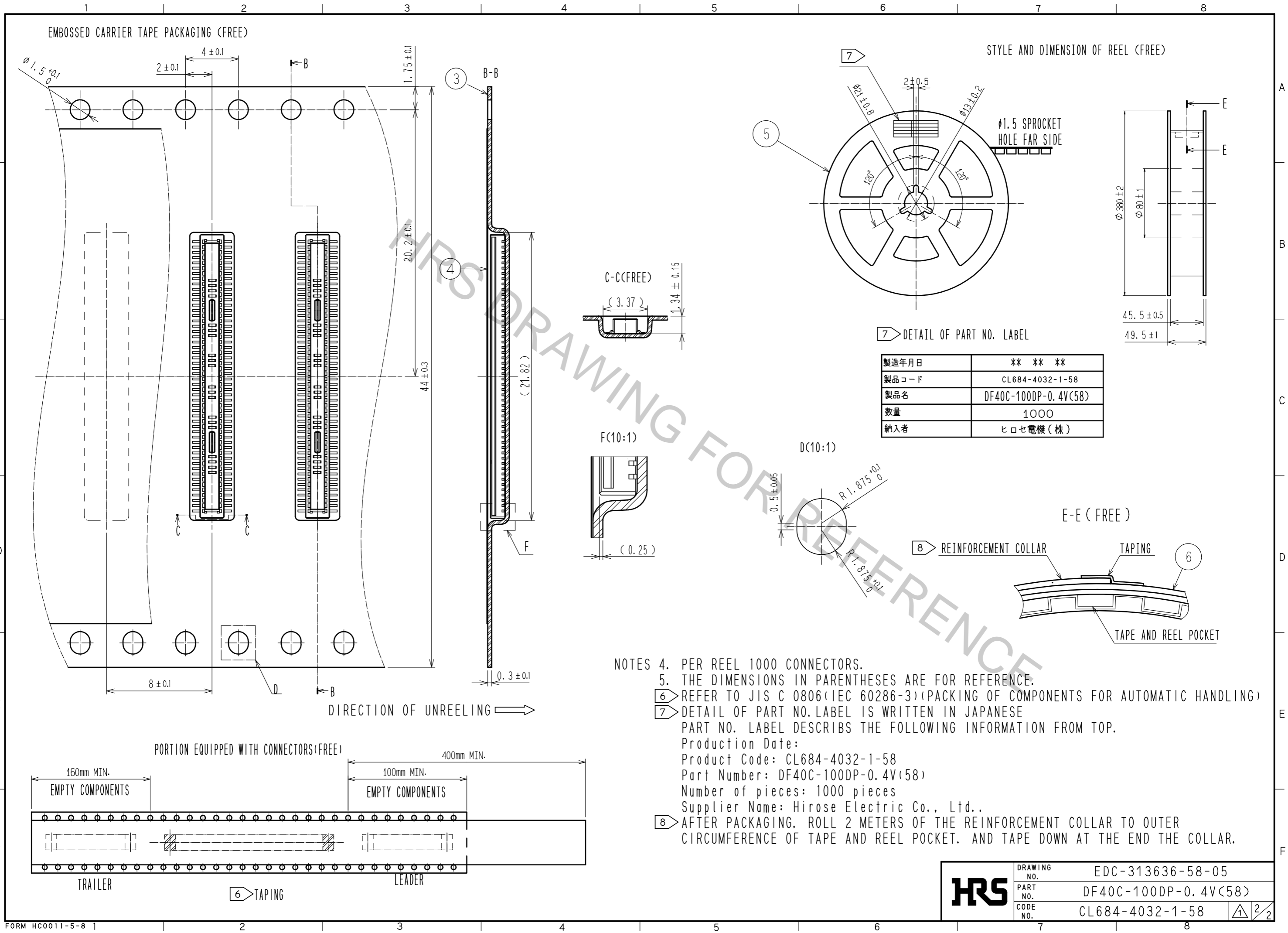
Apr.1.2017 Copyright 2017 HIROSE ELECTRIC CO., LTD. All Rights Reserved.



RECOMMENDED METAL MASK THICKNESS : 120 μm
 RECOMMENDED METAL MASK OPENING RATIO : 80% FOR LEAD PAD

NOTES 1. ALL LEADS CO-PLANARITY SHALL BE 0.1 mm MAX.
 2 EACH ONE CONTACT AT 4 CORNERS SHALL BE USED AS METAL HOLD DOWN.
 3 HRS MARK AND CAV NO. IS INDICATED IN APPROXIMATELY AREA.

2	PHOSPHOR BRONZE	CONTACT AREA: GOLD 0.05 μm MIN Δ	6	PS	CLEAR, REINFORCEMENT COLLAR
		SMT LEAD: GOLD 0.05 μm MIN Δ	5	PS	BLACK, PLASTIC REEL
		UNDERPLATING: NICKEL 1 μm MIN	4	POLYESTER	CLEAR, COVER TAPE
1	LCP	BLACK, UL94V-0	3	PS	CLEAR, EMBOSSED CARRIER TAPE
NO.	MATERIAL	FINISH . REMARKS	NO.	MATERIAL	FINISH . REMARKS
UNITS mm	\oplus ∇	SCALE 10 : 1	COUNT Δ 2	DESCRIPTION OF REVISIONS DIS-H-00000193	
DESIGNED SH. HOSODA		CHECKED YH. MICHIDA		DATE 15.03.02	
APPROVED : MO. ISHIDA		14.09.02		DRAWING NO. EDC-313636-58-05	
CHECKED : YH. MICHIDA		14.09.02		PART NO. DF40C-100DP-0.4V(58)	
DESIGNED : SJ. WADA		14.09.02		CODE NO. CL684-4032-1-58	
DRAWN : KR. AJITO		14.09.02		Δ 1/2	



HRS	DRAWING NO.	EDC-313636-58-05
	PART NO.	DF40C-100DP-0.4V(58)
	CODE NO.	CL684-4032-1-58
		1/2