

PART NUMBER	REV	FIRST USED	TERMINATOR	FEED TYPE	DESCRIPTION
1339630-1	C		BENCH & LEADMAKER	MECH POST FEED	HD-1 APPLICATOR
7-1339630-1	C		BENCH & LEADMAKER	MECH POST FEED	-1 AND SPARE PARTS
7-1339630-7	C		-	-	SPARE PARTS KIT

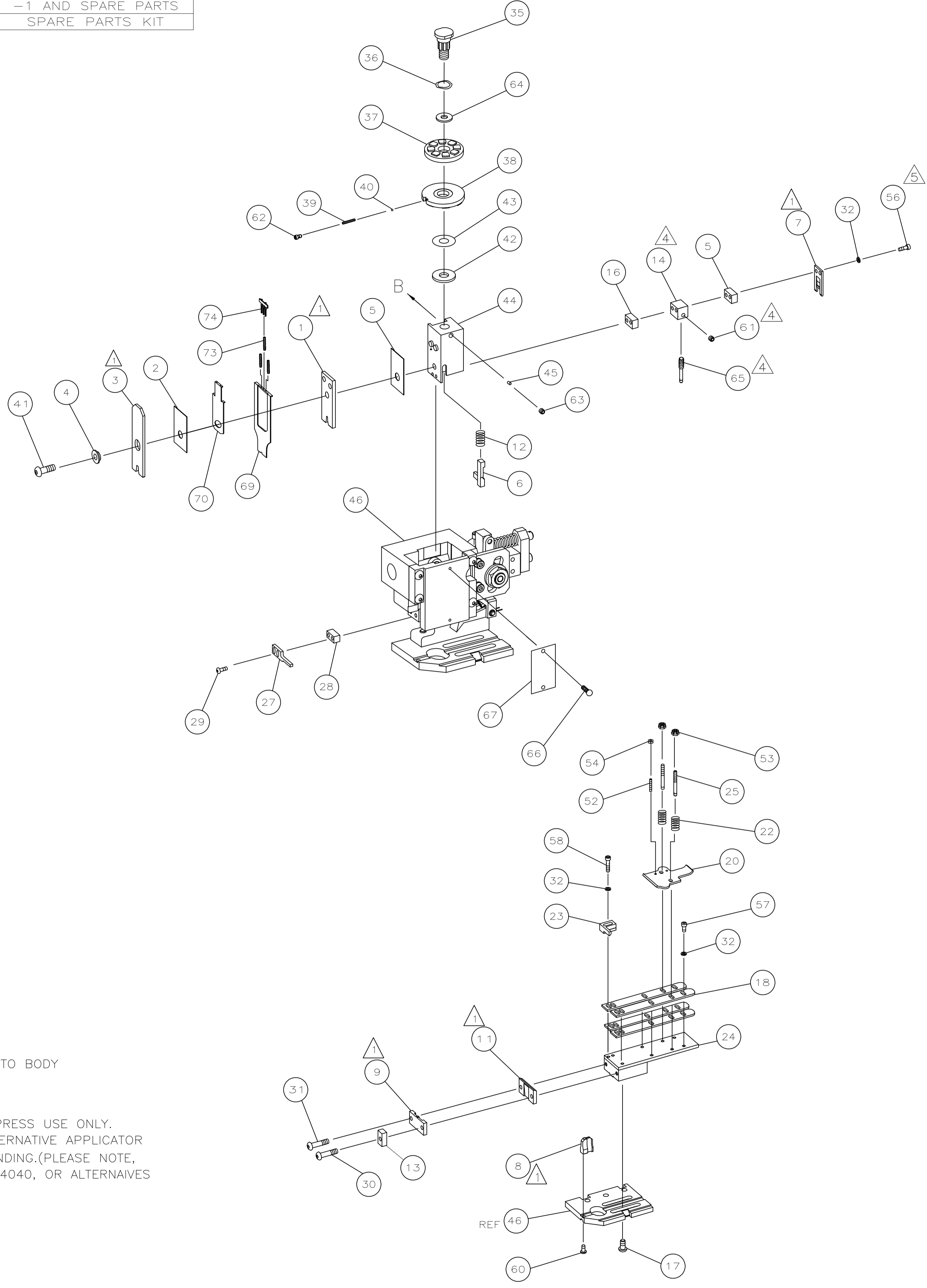
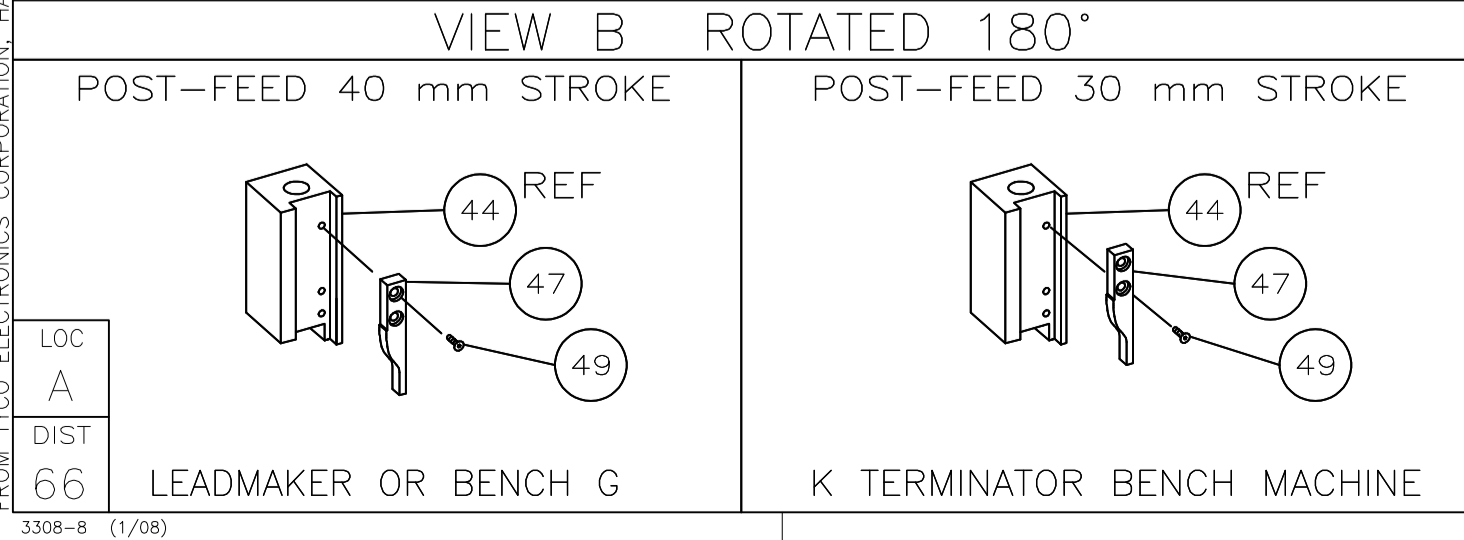
CRIMP DATA AMP TERMINAL AMP CRIMP SPECS			
TERMINAL NAME: .375 SERIES FASTIN-FASTON RECEPTACLE			
CRIMP	SIZE	TYPE	RANGE
WIRE	3.56 [.140 IN]	F	4.00mm ² - 6.00mm ²
INSUL	5.33 [.210 IN]	OVL	3.25-4.20 [.128-.165 IN]
WIRE STRIP LENGTH		APPL INSTRUCTION	
5.80-6.60 [.228-.260 IN]		408-8323	
TERMINAL APPL SPEC	114-3118	FEED	28.19 [1.110 IN]

TERMINALS APPLIED				
151667	-	-	-	-
-	-	-	-	-
-	-	-	-	-
-	-	-	-	-
-	-	-	-	-
-	-	-	-	-
-	-	-	-	-
-	-	-	-	-
-	-	-	-	-
-	-	-	-	-

WIRE SIZE	CRIMP HEIGHT	PIN PN AND LENGTH [IN]
6.00mm ²	2.90 ±0.05 [.114 ±.002 IN]	2-354778-0 [.2595]
5.00mm ²	2.67 ±0.05 [.105 ±.002 IN]	3-354778-8 [.2685]
4.50mm ²	2.54 ±0.05 [.100 ±.002 IN]	4-354778-7 [.2730]
4.00mm ²	2.44 ±0.05 [.096 ±.002 IN]	5-354778-9 [.2790]

SET UP GAGE	LAYOUT
458638-3	L1339630

- RECOMMENDED SPARE PARTS.
- GREASE RAM, CAM, CAM FOLLOWER AND FEED ROD LIGHTLY.
- LUBRICATE DAILY PER THE APPLICATOR INSTRUCTION SHEET SUPPLIED WITH THE APPLICATOR.
- ADJUST ITEM 65 (PIN, FORMING) TO GIVE REQUIRED TERMINAL TAB TO BODY DIMENSION. REFER TO CUSTOMER DRG. NO. 151667
- CUT TO LENGTH AT ASSEMBLY.
- FOR 6.00MM SQ. WIRE THIS APPLICATOR IS RESTRICTED TO BENCH PRESS USE ONLY. IF THIS WIRE SIZE IS REQD. FOR LEADMAKER APPLICATION AN ALTERNATIVE APPLICATOR WITH A .160" WIRE CRIMP WIDTH WILL BE REQD TO PREVENT STRANDING.(PLEASE NOTE, .160" CRIMP WIDTH IS RESTRICTED FOR USE WITH HOUSING P/N 344040, OR ALTEANAIVES WITH SIMILAR HOUSING CAVITY).
- THIS APPLICATOR APPLIES THIN WALL (FLR) INSULATED WIRES.



QTY	REQD	PER ASSY	PART NO	DESCRIPTION	ITEM NO
-	1	1	1424350-1	HOLDER, PIN, WIRED	74
-	3	3	1-23147-4	SPRING, DEPRESSOR	73
-	1	1	1339630	PRINT, APPLICATOR LOG SHEET	72
-	1	1	1338705-2	DOCUMENTATION PACKAGE	71
-	1	1	1490524-2	SPACER, DEPRESSOR	70
-	1	1	1490525-1	DEPRESSOR, WIRE	69
-	1	1	461264-1	PLATE, IDENTIFICATION	67
-	2	2	21017-2	SCR,DRIVE(#2X.19)ID PLATE	66
-	1	1	1333249-1	PIN, FORMING	65
-	1	1	986950-1	WASHER, FLAT PRECISION	64
-	1	1	3-18031-0	SCR,SKT SET(M6X6)RAM	63
-	1	1	18023-9	SCR,SKT CAP(M4X6)CP DSC	62
-	1	1	18031-1	SCR,SKT SET(M3X5)PIN,FORMING	61
-	1	1	18024-7	SCR,BHC(M4X10)ANVIL	60
-	2	2	1-18023-4	SCR,SHC(M4X20)HOLD DOWN	58
-	5	5	1-18023-0	SCR,SHC(M4X8)STRIP GUIDE	57
-	2	2	1-18023-4	SCR,SHC(M4X20)SLUG BLADE	56
-	2	2	18029-1	NUT,HEX(M3)DRAG	54
-	2	2	986965-1	NUT,HEX SL(M4)DRAG STUD	53
-	2	2	2-18032-2	SCR,SKT SET(M3X10)DRAG	52
-	1	1	18024-3	SCR,BHC(M3X10)CAM	49
-	1	1	1338676-1	CAM, POST-FEED 30 & 40 mm ST	47
-	1	1	1338662-1	APPLICATOR, BASIC (SUBASSY)	46
-	1	1	690191-1	PLUG, NYLON	45
-	1	1	1320998-1	RAM	44
-	1	1	690125-1	WASHER, LAMINATED	43
-	1	1	690124-3	WASHER, RAM	42
-	1	1	2-18024-6	SCREW,BHC(M8X25)CRIMPER	41
-	1	1	23241-1	BALL, STEEL	40
-	1	1	2-22278-7	SPRING, COMPRESSION	39
-	1	1	1320922-1	DISC, INSULATION	38
-	1	1	354777-1	WIRE DISC, PLASTIC	37
-	1	1	22480-5	WASHER, SPRING	36
-	1	1	690212-1	POST, RAM	35
-	9	9	18025-2	WASHER,LOCK(M4)SHEAR BL	32
-	1	1	1-18024-0	SCR,BHC(M4X20)SHEAR PL	31
-	1	1	4-18024-2	SCR,BHC(M4X30)SHEAR PL	30
-	2	2	18024-8	SCR,BHC(M4X12)STRIPPER	29
-	1	1	3-690451-2	SPACER, STRIPPER	28
-	1	1	2-576128-2	STRIPPER	27
-	2	2	1320906-1	DRAG, STUD	25
-	1	1	1-1320995-5	STRIP GUIDE	24
-	1	1	240825-3	PLATE, STRIP HOLD DOWN	23
-	2	2	4-22281-1	SPRING, DRAG	22
-	1	1	1338665-1	DRAG, STOCK	21
-	4	4	1338663-4	GUIDE, LOWER STRIP	18
-	4	4	1-18024-8	SCR,BHC(M6X12)STRIP GD PL	17
-	1	1	1338708-1	SPACER, SLUG BLADE	16
-	1	1	1333248-1	HOLDER, FORMING PIN	14
-	1	1	690481-1	SPACER, HOLD DOWN	13
-	1	1	23846-1	SPRING, HOLD DOWN	12
-	1	1	1-240833-3	PLATE, REAR SHEAR	11
-	1	1	189750-1	PLATE, FRONT SHEAR	9
-	2	1	1333222-4	ANVIL	8
-	1	1	690474-5	BLADE, SLUG	7
-	1	1	5-455892-9	HOLD DOWN, TERMINAL	6
-	1	1	1-240641-2	SPACER, SLUG BLADE	5
-	1	1	238009-1	SPACER, BLOCK CRIMPER	4
1	2	1	805783-2	CRIMPER, INSULATION	3
-	1	1	455888-9	SPACER, CRIMPER	2
1	2	1	1-456425-0	CRIMPER, WIRE	1

QTY REQD PER ASSY	PARTS LIST		END FEED HD-1 APPLICATOR	
DWN	06FEB02	MATERIAL	HEAT TREAT	
CHK	-			
APVD	06FEB02	Tyco Electronics Corporation Harrisburg, PA 17105-3608		
NAME	F.BACKHURST			
SCALE	SIZE	DRAWING NO	SHEET	REV
-	A1	1339630	1 of 1	C

THIS DRAWING IS A CONTROLLED DOCUMENT. P/N 1339630

THIS INFORMATION IS CONFIDENTIAL AND PROPRIETARY TO TYCO ELECTRONICS CORPORATION AND ITS WORLDWIDE SUBSIDIARIES AND AFFILIATES. IT MAY NOT BE DISCLOSED TO ANY OTHER PARTY WITHOUT THE WRITTEN AUTHORIZATION FROM TYCO ELECTRONICS CORPORATION, HARRISBURG, PENNSYLVANIA, USA.