

AMP INCORPORATED. ALL RIGHTS RESERVED. PATENTS PENDING.

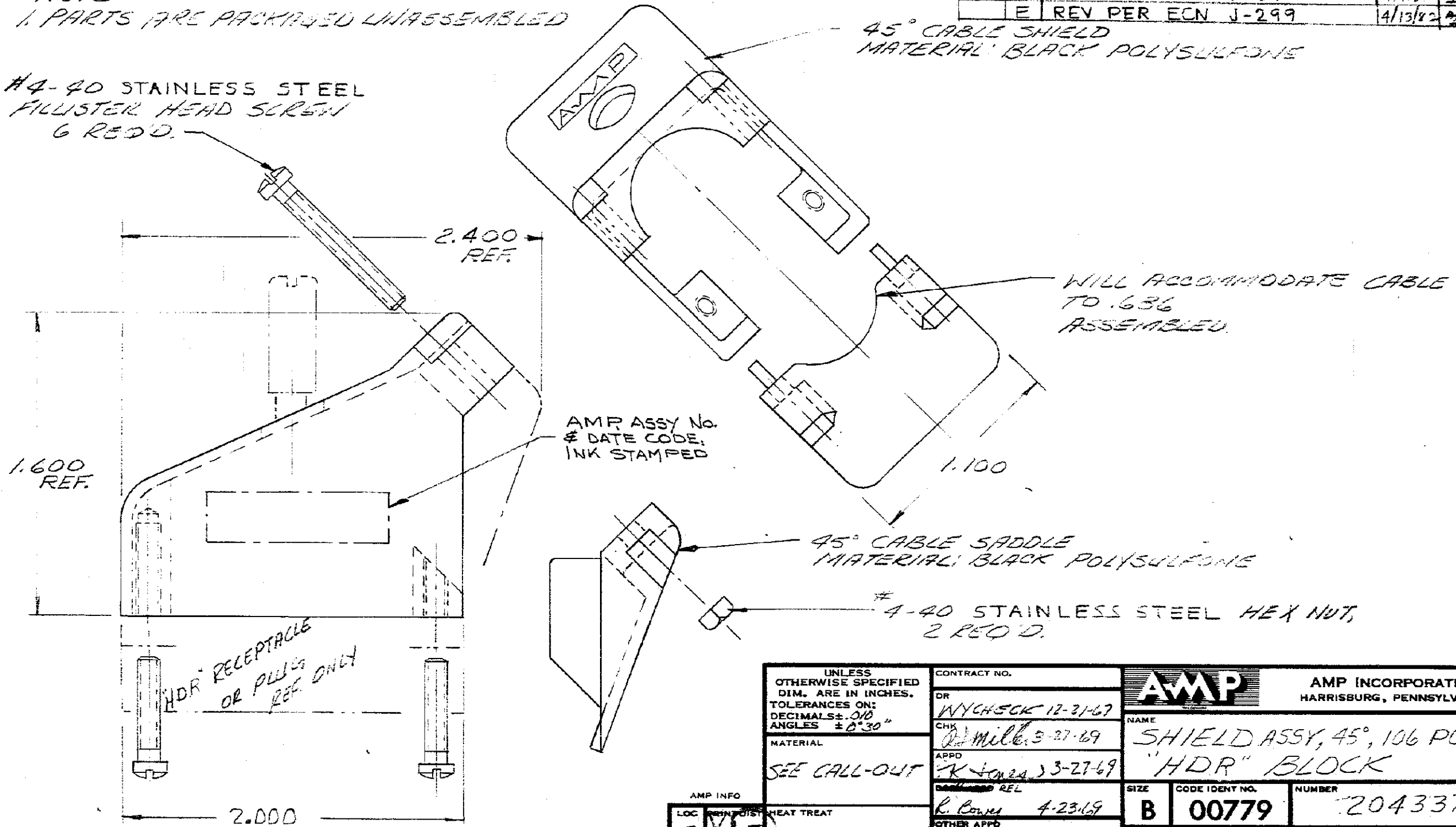
204337-1 1. AS SHOWN

- 2 1. SAME AS -1 EXCEPT:  
2. SCREWS AND STAINLESS STEEL.

ZONE	LTR	DESCRIPTION	DATE	APPROVED
0		RELEASE WAS 5041-90 CUST.	3-26-67	
A		REV. PER ECN A-073	7/10/69	DB
B		REV. PER ECN A-066	8-12-69	DB
C		REV. PER ECN F-007	5/16/77	SM
D		REV. PER ECN H-372	7/10/81	SM
E		REV PER ECN J-299	4/13/82	SM

NOTE:  
1. PARTS ARE PACKAGED UNASSEMBLED

#4-40 STAINLESS STEEL  
FLUSTER HEAD SCREW  
6 REQ'D.



1.600 REF.

2.400 REF.

AMP ASSY No.  
& DATE CODE,  
INK STAMPED

45° CABLE SHIELD  
MATERIAL: BLACK POLYSULFONE

WILL ACCOMMODATE CABLE  
TO .636  
ASSEMBLED.

45° CABLE SADDLE  
MATERIAL: BLACK POLYSULFONE

#4-40 STAINLESS STEEL HEX NUT,  
2 REQ'D.

"HDR" RECEPTACLE  
OR PLUG  
REF. ONLY

2.000

UNLESS OTHERWISE SPECIFIED DIM. ARE IN INCHES. TOLERANCES ON: DECIMALS ±.010 ANGLES ±0°30"	CONTRACT NO.	AMP INCORPORATED HARRISBURG, PENNSYLVANIA	
	DR	NAME	
	CHK	SHIELD ASSY, 45°, 106 POS	
	APPD	"HDR" BLOCK	
MATERIAL	REL	SIZE	CODE IDENT NO.
SEE CALL-OUT	REL	B	00779
AMP INFO	OTHER APPD	NUMBER	204337
LOC	FINISH	SCALE	WT CALC ACTUAL SHEET
P 39 E			