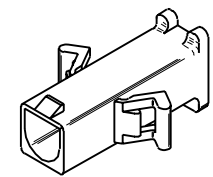
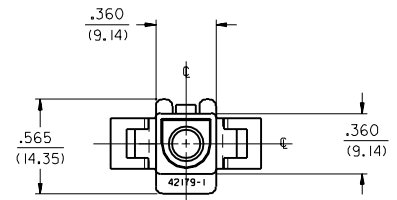
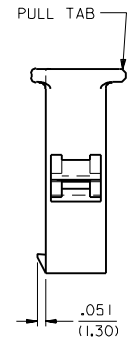
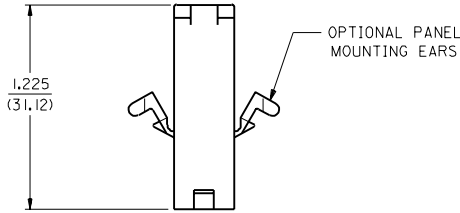
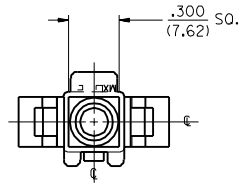


13 12 11 10 9 8 7 6 42179 4 3 2 1



PLUG

		G1	SEE SHEET 1
		G	SEE SHEET 1
		E	SEE SHT. 1
		C	SEE SHT. 1
		B	SEE SHT. 1
		A	SEE SHT. 1
		I	SEE SHT. 1
LTR.	REVISIONS	LTR.	REVISIONS

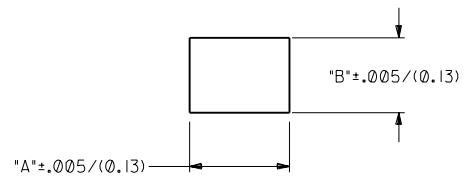
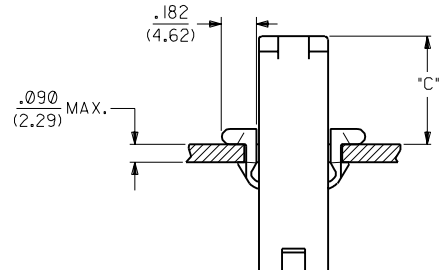
DIMENSIONS SHOWN (METRIC) INCH	
UNLESS OTHERWISE SPECIFIED TOLERANCES: ANGULAR ± .04° 10	
INCH	METRIC
3 PLACE ± .007	---
2 PLACE ± .010	± 0.18
1 PLACE ---	± 0.25
DRAFT WHERE APPLICABLE MUST REMAIN WITHIN DIMENSIONS	
DRW. BY: CEP	CHKD. BY: RW
APP'D. BY: RAS	SCALE: 2 : 1

▽ = 0	▼ = 0	REVISE ONLY ON CAD SYSTEM	
TITLE		SHEET NO.	DATE
.125/(3.17) HOUSING, PLUG AND RECEPTACLE, 1 CKT.		2	5 / 6 / 88
PART NO. MOLEX INCORPORATED		DRWG. NO.	
L15LEJLL 60532 U.S.A.		SD-42179-1	
SEE CHART		DRWG. NO.	
FILE NAME: S42179.DX2	THIS DRAWING CONTAINS INFORMATION THAT IS PROPRIETARY TO MOLEX INC. AND SHOULD NOT BE USED WITHOUT WRITTEN PERMISSION.		SIZE: CP

13 12 11 10 9 8 7 6 5 4 3 2 NO P.S.1

PLUG		
PART NO.	ENG. NO.	
03-12-2016	42179-IP1	
03-12-2015	42179-IP	
03-12-7014	42179-IPRD	
03-12-7015	42179-IPBU	<b>OBSOLETE</b>
03-12-7016	<b>42179-IPIRD</b>	
03-12-2071	42179-IPIBK	<b>OBSOLETE</b>
03-12-2072	42179-IPIGN	<b>OBSOLETE</b>
03-12-2073	42179-IPYIW	<b>OBSOLETE</b>
03-12-2074	42179-IPIBU	<b>OBSOLETE</b>
03-12-2075	42179-IPIGY	<b>OBSOLETE</b>

RECEPTACLE		
PART NO.	ENG. NO.	
03-12-1016	42179-IR1	
03-12-6014	42179-IRIRD	
03-12-6015	42179-IRIBU	<b>OBSOLETE</b>
03-12-2081	42179-IRIBK	<b>OBSOLETE</b>
03-12-2082	42179-IRIGN	<b>OBSOLETE</b>
03-12-2083	42179-IRYIW	<b>OBSOLETE</b>
03-12-2084	42179-IRIGY	<b>OBSOLETE</b>



HOUSING	DIM. "A"	DIM. "B"	DIM. "C"
PLUG	.521/(13.23)	.440/(11.18)	.55/(14.0)

**NOTES:**

- PART ACCEPTS A MAXIMUM .250/(6.35) INSULATION DIA.
- FOR USE WITH MOLEX .125/(3.17) DIAMETER SERIES TERMINALS EXCEPT THE I219/I220 SERIES.

**LEGEND:**

42179-|\*-\*-\*

CIRCUIT SIZE: \_\_\_\_\_

HOUSING TYPE: \_\_\_\_\_

P = PLUG

R = RECEPTACLE

MOUNTING EAR OPTION: \_\_\_\_\_

BLANK = WITH PREBENT EARS, PLUG ONLY

I = WITHOUT EARS

COLOR: \_\_\_\_\_

BLANK = 94V-2; TRANSLUCENT NATURAL COLOR

AM=AMBER BK=BLACK BU=BLUE

BN=BROWN GY=GRAY GN=GREEN

OR=ORANGE RD=RED YW=YELLOW

MATERIAL: \_\_\_\_\_

BLANK = NYLON 6/6, U.L. 94V-2

REV.	BY	CHK'D.	RW	SCALE
D2				
D1				
I	SEE SHEET I	D	SEE SHEET I	
H	SEE SHEET I	C	SEE SHEET I	
GI	SEE SHEET I	B	SEE SHEET I	
G	SEE SHEET I	A	SEE SHEET I	
F	SEE SHEET I	I	SEE SHEET I	
LTR.	REVISIONS	LTR.	REVISIONS	

DIMENSIONS SHOWN (METRIC) INCH	
UNLESS OTHERWISE SPECIFIED TOLERANCES ANGULAR	
3 PLACE ± .007	---
2 PLACE ± .010	± 0.18
1 PLACE ---	± 0.25
DRAFT WHERE APPLICABLE MUST REMAIN WITHIN DIMENSIONS	
DRWG. BY: CEP	CHK'D. BY: RW
APP'D. BY: RAS	SCALE: 2 : 1

▽ = 0	▼ = 0	REVISE ONLY ON CAD SYSTEM
TITLE: .125/(3.17) HOUSINGS, PLUG AND RECEPTACLE, I C K T.		
MOLEX INCORPORATED	SHEET NO. 3	DATE 5/6/88
1315E, ILL. 60532 U.S.A.		
PART NO. SD-42179-1*	DRWG. NO.	
SEE CHART		
FILE NAME: S42179.IX3	THIS DRAWING CONTAINS INFORMATION THAT IS PROPRIETARY TO MOLEX INC. AND SHOULD NOT BE USED WITHOUT WRITTEN PERMISSION.	DIV. CP

42179