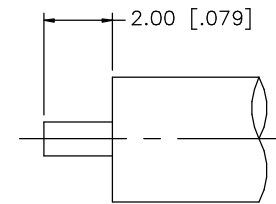
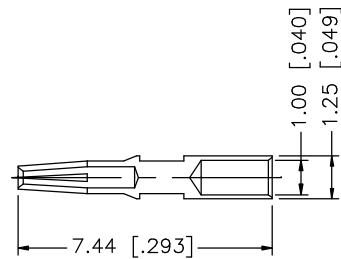
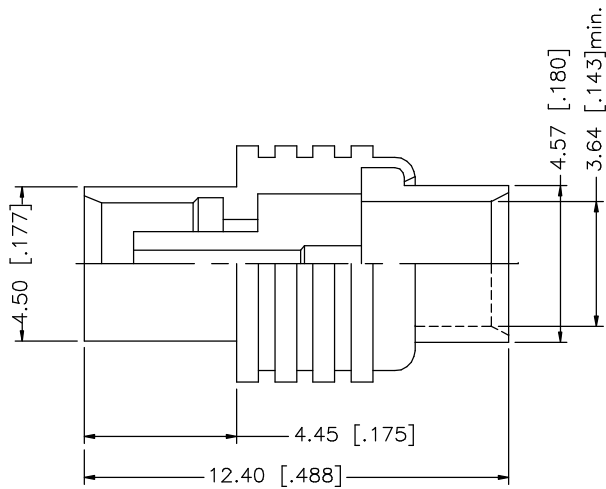


REV.	DATE	DESCRIPTION
NC	06/10/03	INITIAL RELEASE



RECOMMENDED CABLE STRIPPING DIMENSIONS

NOTE:
1. CONTACT PIN TO SOLDER

8					<small>UNLESS OTHERWISE SPECIFIED DIMENSIONS ARE IN MILLIMETERS. DIMENSIONS IN [] ARE IN INCHES AND FOR CUSTOMER REFERENCE ONLY.</small> <small>UNLESS OTHERWISE SPECIFIED TOLERANCES FOR MILLIMETERS ARE:</small> 0.5 - 8mm ± 0.20mm 8 - 30mm ± 0.40mm 30 - 120mm ± 0.50mm <small>UNLESS OTHERWISE SPECIFIED TOLERANCES FOR INCHES ARE:</small> .020 - .315 = ± 0.007" .315 - 1.180 = ± 0.015" 1.180 - 4.724 = ± 0.020"	APPROVALS	DATE	<h1 style="color: blue;">Amphenol Connex</h1>					
7						DRAWN	G.R.S.					06/10/03	
6						CHECKED			PART DESCRIPTION				
5						ISSUED			MCX DIRECT SOLDER JACK (.141" SEMI RIGID CABLE)				
4					SHEET	1 OF 1		PART NO.					
3	CONTACT PIN	BER. COPPER	GOLD	1				252184					
2	INSULATOR	TEFLON	NATURAL	1				DWG. NO. 252184.DWG					
1	BODY	BRASS	GOLD	1				REV.	NC	SIZE	A	SCALE	NA
	DESCRIPTION	MATERIAL	FINISH	QTY	DO NOT SCALE DRAWING	CAD FILE	C:/252/252184.DWG						