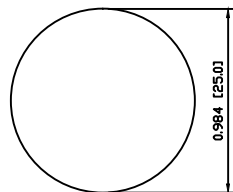
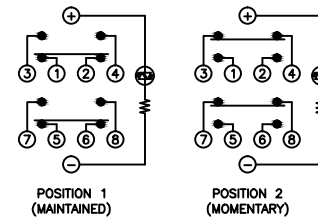


SUGGESTED PANEL CUTOUT



MAXIMUM PANEL THICKNESS: 0.394 [10.0mm]

SCHEMATIC



SPECIFICATIONS

- FUNCTION: 2PNO OFF-(ON) + 2PNC ON-(OFF)
- RATING: 20mA 12VDC
- ILLUMINATION VOLTAGE: 12V 20mA
- CONTACT RESISTANCE: Initial: 50mΩ Max. at 1A 12VDC
- INSULATION RESISTANCE: 1,000MΩ Min. at 500VDC
- DIELECTRIC STRENGTH: 2,000VAC Min. for 1 Minute
- ELECTRICAL LIFE: 50,000 Cycles
- MECHANICAL LIFE: 1,000,000 Cycles
- TEMPERATURE: Operating: -20°C to 70°C
- INGRESS PROTECTION: IP65
- APPROVALS: RoHS COMPLIANT

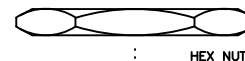
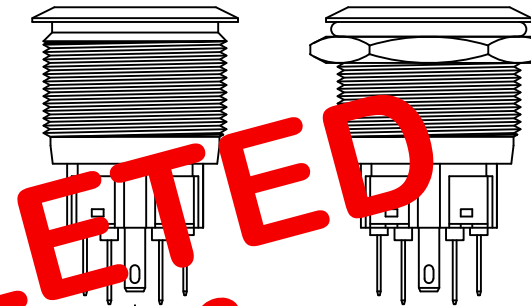
MATERIALS

- BUSHING: Stainless Steel (304)
- BASE: Polyamide 6/6 (PA66)
- ACTUATOR: Stainless Steel (304) Polycarbonate (PC)
- HARDWARE: Nickel Plated Brass (H59)
- SEALING: Silicone Rubber
- INNER ASSEMBLY: Polyamide 6/6 (PA66) Polycarbonate (PC) Polyoxymethylene (POM) Brass (H59) Stainless Steel Beryllium Copper
- SPRING: Stainless Steel
- CONTACTS: Gold Plated Silver/Cadmium Oxide (AgCdO)
- TERMINALS: Gold Over Nickel Plated Brass
- O-RING: Silicone Rubber

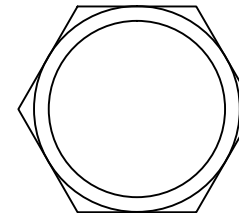
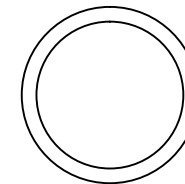
COLORS AND FINISH

- BEZEL: Stainless Steel Machine Finish
- ACTUATOR: Stainless Steel Machine Finish
- ILLUMINATION: White (Forward) White (Reverse)
- MARKING: None

OBSOLETE
MAY 2016
PCR 22295



EXPLODED VIEW



ASSEMBLED VIEW

BODY	A	09/07/08	CAB
COLORS	A	09/07/08	CAB
MATERIALS	A	10/09/09	CAB
SPECIFICATIONS	A	10/09/09	CAB
REFERENCE	REV.	DATE	BY

THE INFORMATION CONTAINED IN THIS DOCUMENT IS PROPRIETARY TO E-SWITCH AND IS NOT TO BE COPIED OR TRANSFERRED

INITIAL RELEASE	19292	10/09/09	CAB
DESCRIPTION	PCR	DATE	DRAWN BY

DIMENSIONS

INCHES [MILLIMETERS]
GENERAL TOLERANCES
±0.008 [±0.2] / ±1'

SCALE: DRAWING NOT TO SCALE

		TITLE	
		PV8F2V0SSG-304	
ITEM NUMBER	DATE	REVISION	
52-PV8F2V0SSG304	SEPTEMBER 9, 2010	A	