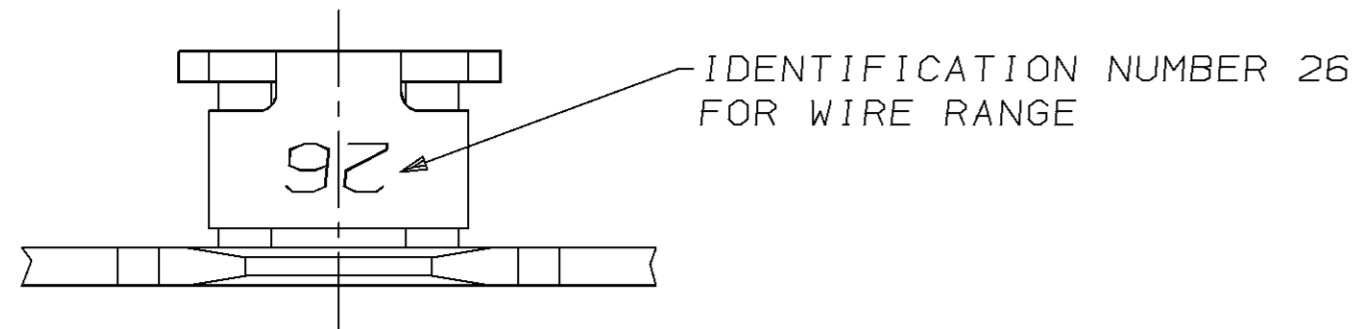
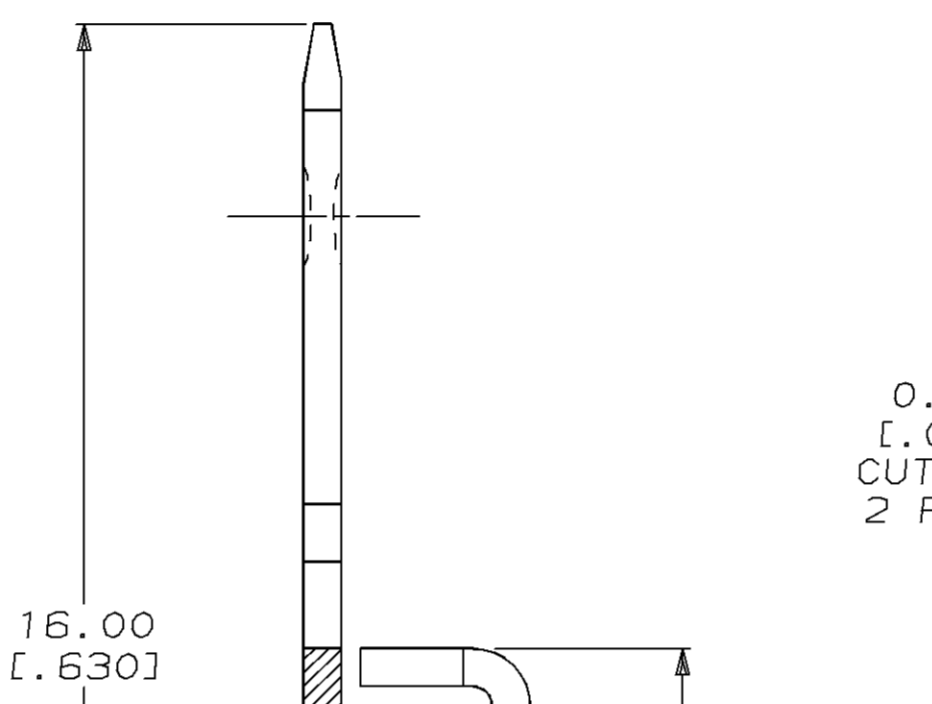
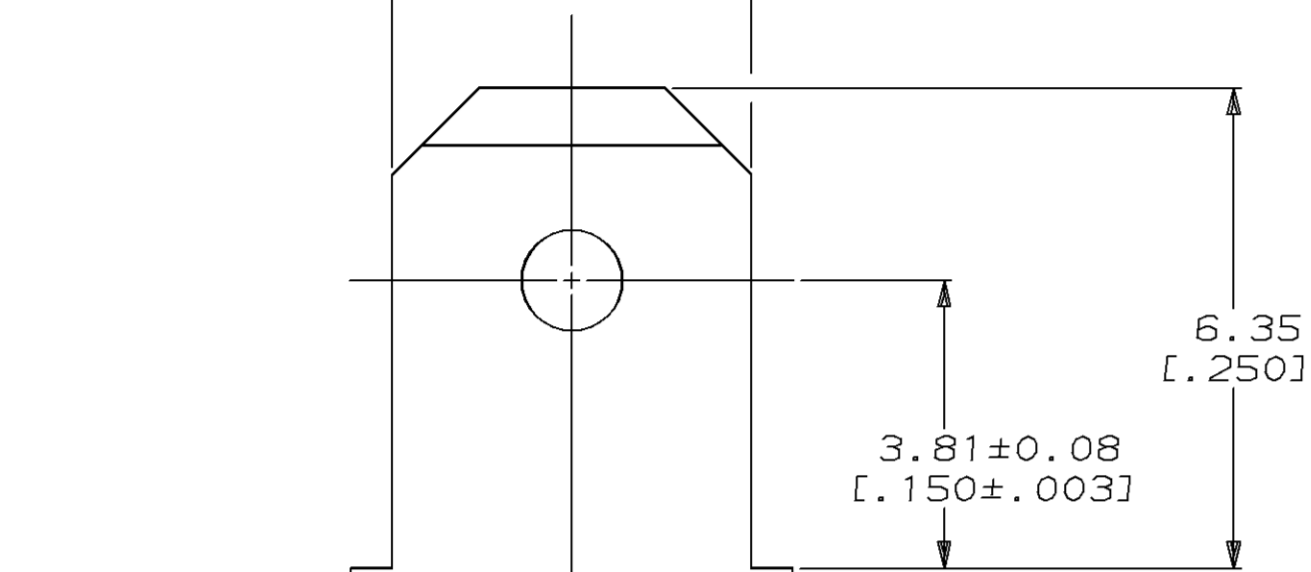


LOC	DIST	P	F	ZONE	LTR	REVISIONS	DATE	APPD	
AF	50					D	REVISED AND REDRAWN PER 0710-0086-96	18MAR96	MF/NN

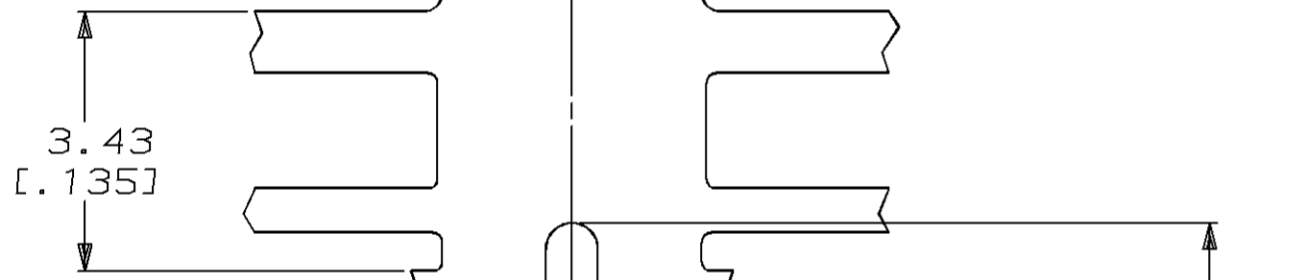
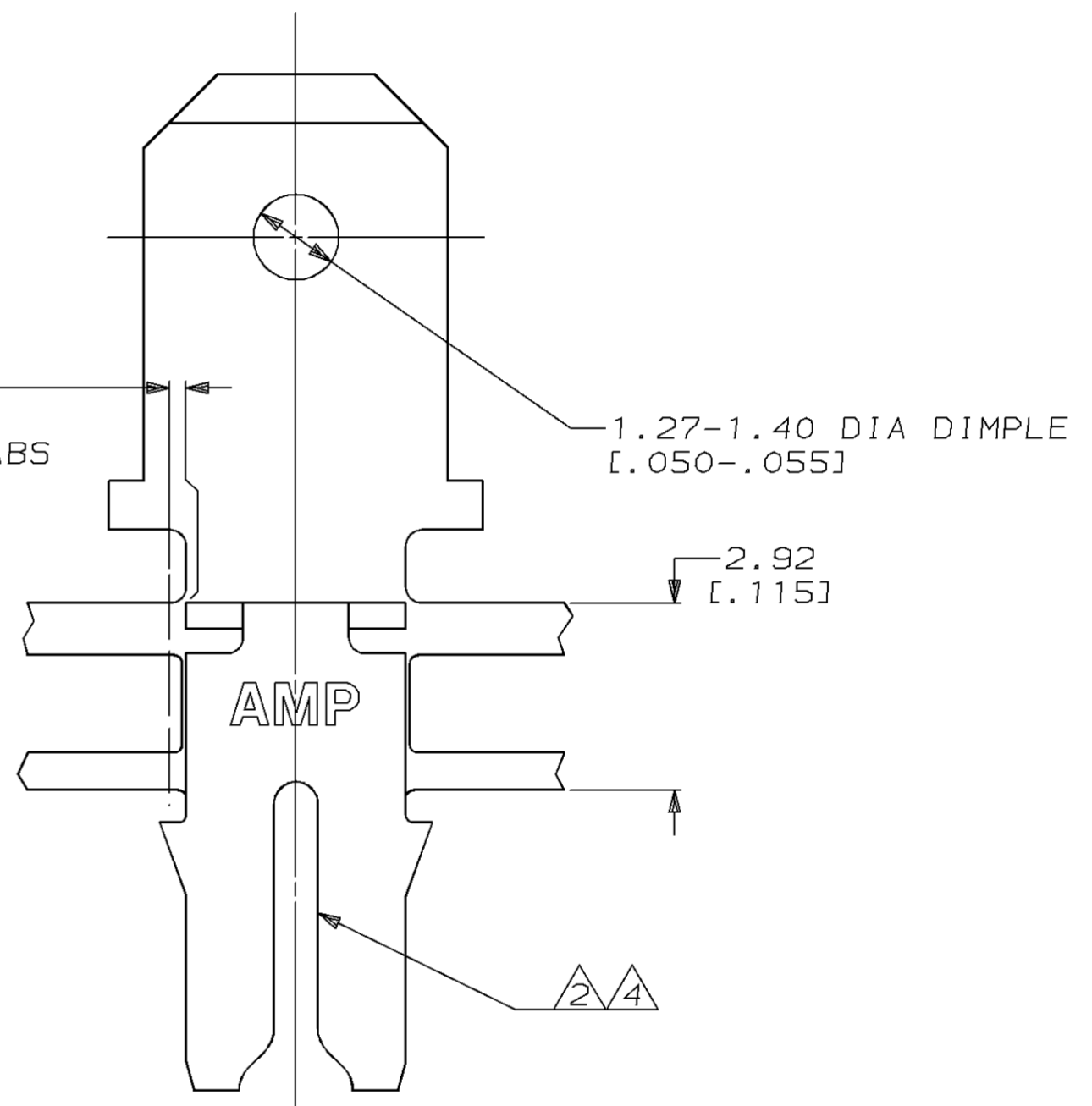
- 1 CONTINUOUS STRIP ON REELS WITH TERMINALS LOCATED ON 8.38 ± 0.08 [.330 ± .003] CENTERS.
- 2 SLOT TERMINATES A SINGLE 0.81-1.02mm [#20-#18] AWG BARE SOLID COPPER WIRE.
- 3 AFTER INSERTION INTO PLASTIC HOLDER TAB PORTION MUST BE BENT OVER 45° TO 90° OR POTTED-IN TO PREVENT PULL-OUT WHEN MATING RECEPTACLE IS DISCONNECTED.
- 4 SLOT ALSO TERMINATES A SINGLE 0.81mm [#20] AWG OR A 0.81 [.032] DIA COPPER CLAD STEEL WIRE PER ASTM B452-67 CLASS 40 A.



4.83 [.190]
4.72 [.186]



0.25 MAX [.010]
CUT-OFF TABS
2 PLACES



1.78 [.070]

3.51 [.138]
3.35 [.132]

4.32 [.170]
4.19 [.165]

0.508 ± 0.025 [.020 ± .001]

3.05 [.120]
2.95 [.116]

62904-1
PART NO

DO NOT SCALE PRINT. UNLESS SPECIFIED DIMENSIONS IN mm [INCHES] TOLERANCES ON: 2 PLC DEC ± 0.25 [.010] 3 PLC DEC ± - ANGLES ± -	DR 18/MAR/96 MICHAEL S. FEHER	AMP Incorporated Harrisburg, PA 17105-3608
	CHK 22/MAR/96 RICHARD GRZYBOWSKI	
MATERIAL 4M BRASS	APPD 22/MAR/96 NELSON E. NEFF	NAME TERMINAL, TAB, 4.75 [.187] FASTON™ MAG-MATE™
	APPD 22/MAR/96 RICK OSKOWIS	PRODUCT SPEC 108-2012
FINISH 0.002032 [.000080] MIN TIN PER MIL-T-10727	APPLICATION SPEC 114-2046	SIZE C 00779
	WEIGHT -	DRAWING NO C=62904
		SCALE 10:1
		SHEET 1 OF 1

THIS DRAWING IS A CONTROLLED DOCUMENT FOR AMP INCORPORATED. IT IS SUBJECT TO CHANGE AND THE CONTROLLING ENGINEERING ORGANIZATION SHOULD BE CONTACTED FOR THE LATEST REVISION.