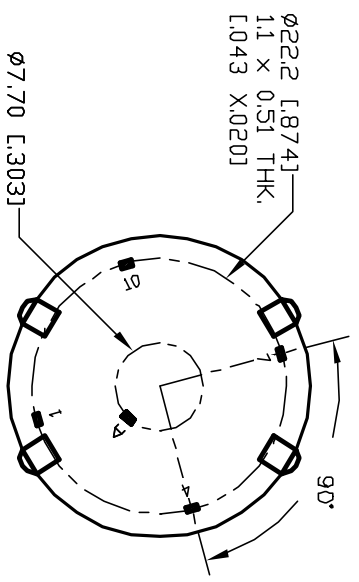
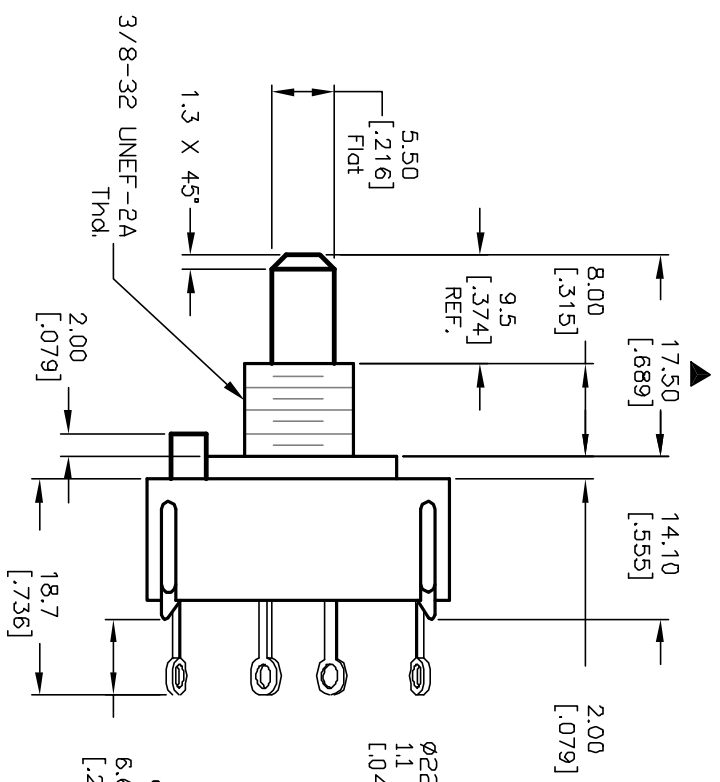
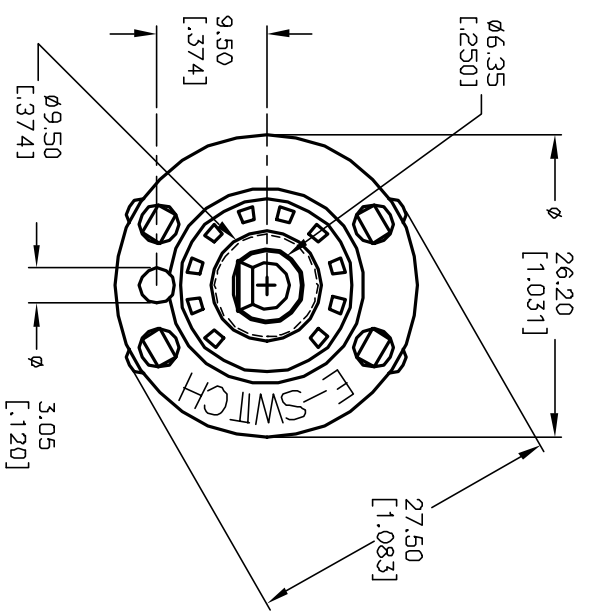
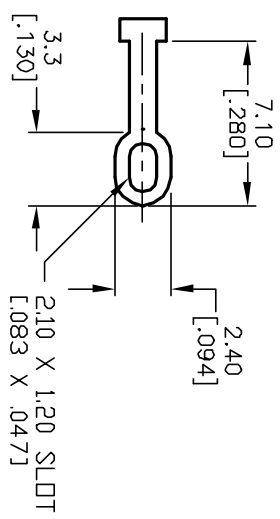
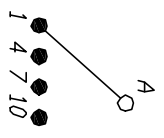


- NOTES:
1. ALL DIMENSION IN MM [INCH]
 2. GENERAL TOLERANCE: X.X=±0.4
X.XX=±0.25
 3. TERM. NOS. FOR REF. ONLY
 4. CONTACT RATING SWITCHING: 150mA, 250V AC/DC
350mA, 110V AC/DC
 5. CONTACT RATING (NON-SWITCHING) 5A
 6. OPERATING FORCE: 425±100 CM/STANDARD
 7. OPERATING TEMP: -30° to 85°C
 - ▲ 8. CIRCUIT SP: 4 POSITIONS, 90° INDEX.
 9. DIELECTRIC STRENGTH 1000V RMS min. @ SEA LEVEL
 10. ▲ DESIGNATE MAJOR DIMENSIONS
 - ▲ 11. HARDWARE SUPPLIED ON SWITCH- SEE BELOW
STOP RING, LOCKWASHER, & LOCKNUT



D	12821	REVISED NOTE 11	2/25/03	CJB	<p>E-SWITCH®</p> <p>TITLE: KC-58-A (9.5mm)-01-N-L-S</p>	SCALE	1.5:1	DATE	3/12/01	DR	CJB	DWG	G510990	REV	D
C	12434	REV DESC. PER NEW CATALOG	9/19/02	CJB											
B	11872	REVISED ACTUATOR LENGTH	12/19/01	CJB											
REV.	ECN No.	DESCRIPTION	DATE	CHKD											
<p>THE INFORMATION CONTAINED IN THIS DOCUMENT IS PROPRIETARY TO E-SWITCH AND IS NOT TO BE COPIED OR TRANSFERRED</p>															