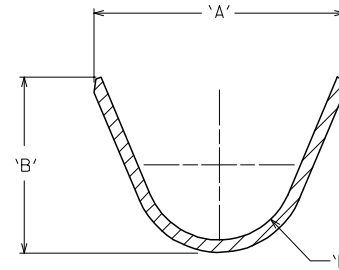
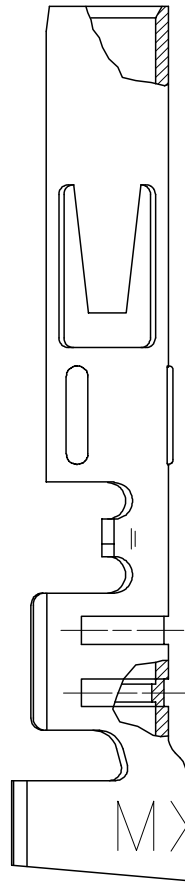
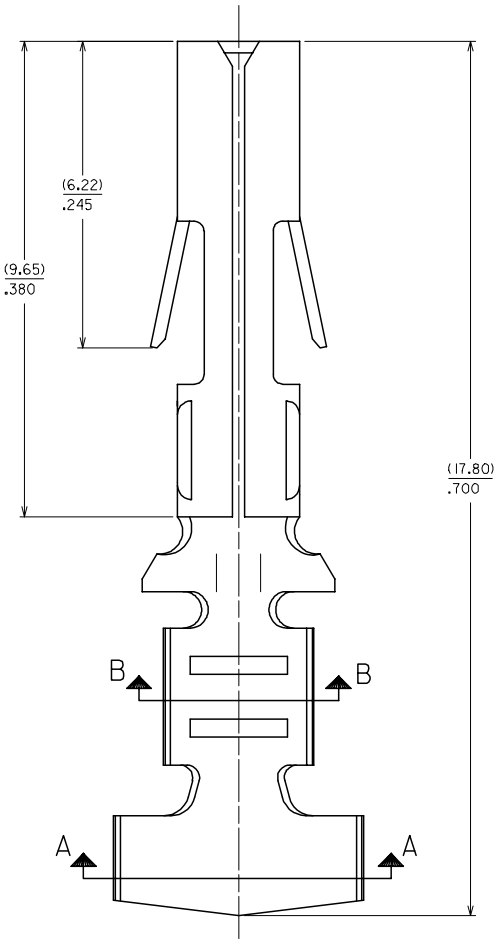
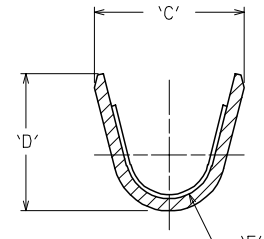


EDP NO.	ENG NO.	FORM	'A'	'B'	'C'	'D'	'E'	'F'
02-08-1201	8980-3C	CHAIN,14-20 AWG WIRE	(4.44)	(3.39)	(3.02)	(3.61)	(1.23)	(0.61)
02-08-1202	8980-3L	LOOSE,14-20 AWG WIRE	.175	.133	.119	.142	.048	.024

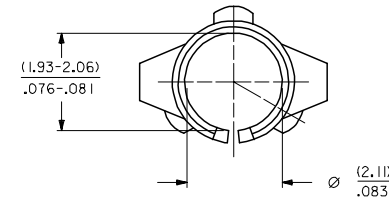
- NOTES:
 1. FINISH: (.00089)/.000035 MN. TIN OVER
 (.00051)/.000020 MIN COPPER (COPPER PLATE REFLOWED)
 2. MATERIAL: (.025)/.010 THK PHOS
 BRONZE, ALLOY CA 51000.



SECTION A-A



SECTION B-B



OBS060702 EC NO: S2007-0797 DRWN:GMENARLY 2007/03/30 CHKD:SKANG 2007/04/03 APPR:MLONG 2007/04/03	QUALITY SYMBOLS	$\nabla = 0$
		$\triangle = 0$
REV	DESCRIPTION	

GENERAL TOLERANCES (UNLESS SPECIFIED)	
	MM
	INCH
4 PLACES	$\pm .010$
3 PLACES	$\pm .025$
2 PLACES	$\pm .050$
1 PLACE	$\pm .125$
ANGULAR $\pm 1^\circ$	
DRAFT WHERE APPLICABLE MUST REMAIN WITHIN DIMENSIONS	

DIMENSION STYLE	
MM/IN	
DRAWN BY	DATE
TAY	1987/12/15
CHECKED BY	DATE
AT	1987/12/15
APPROVED BY	DATE
AB	1987/12/15
MATERIAL NO.	
SEE TABLE	
SIZE	
A3	

SCALE	DESIGN UNITS	THIRD ANGLE PROJECTION	
NTS	METRIC		
TITLE			
TERMINAL SOCKET			
DIA. (2.096)/.0825			
MOLEX INCORPORATED			
DOCUMENT NO.		SHEET NO.	
SD-8980-3*		1 OF 1	