

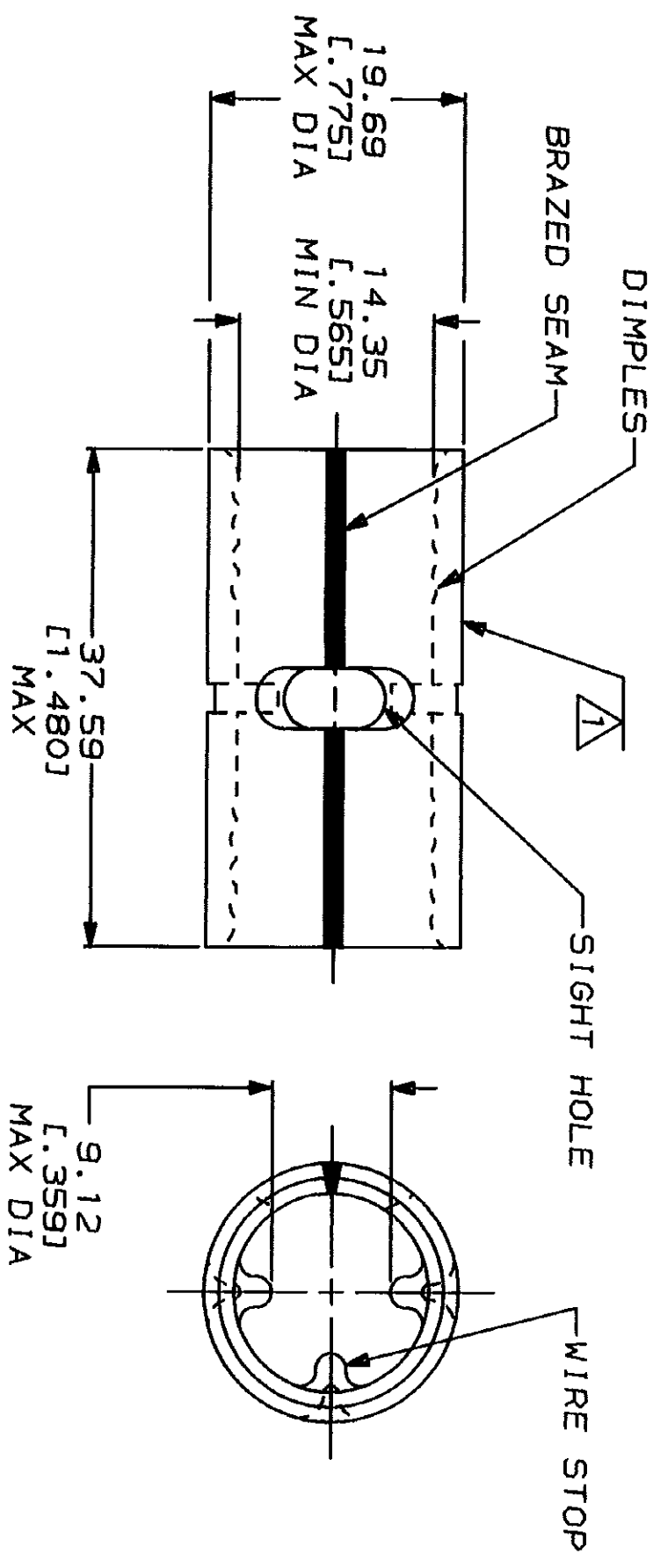
THIS DRAWING IS UNPUBLISHED. RELEASED FOR PUBLICATION BY AMP INCORPORATED. ALL INTERNATIONAL RIGHTS RESERVED. 19

AMP PART NO	MATERIAL	PKG TYPE	QTY
8-36959-3	M/F 8-36959-0	BOX	25

LOC	DIST	P	F	ZONE	LTR	DESCRIPTION	DATE	APPD
G	14				C	REVISED & REDRAWN PER 0720-0037-93	5/24/93	PER

**METRIC**  
DIMENSIONS LISTED IN MM [ INCHES ]

<b>AMP</b> WIRE RANGE	<b>IL</b> E13288 Listed
3/0 AWG SOLID OR STRANDED	3/0 AWG SOLID OR STRANDED
<b>IL</b> LR7189 Certified	MILITARY P/N AND CLASS
3/0 AWG SOLID OR STRANDED	NOT APPLICABLE



1 STAMP AMP 3/0W\* APPROX AS SHOWN  
2 MATERIAL THK: 2.31 ± 0.08 [ .091 ± .003 ]

AMP INCORPORATED  
CUSTOMER SERVICE SYSTEMS

MAX RECOMMENDED OPERATING TEMPERATURE:  
170°C MAX

FOR ADDITIONAL PRODUCT INFORMATION OR COPIES OF DRAWINGS AND TECHNICAL DOCUMENTS

VOLTAGE RATING:  
NOT APPLICABLE

FOR APPLICATION

CIRCULAR MIL AREA:  
76.3-96.3mm² [150,500-190,000] CIR MILS  
SOLID OR STRANDED

TOOLING INFORMATION

FINISH: TIN PLATE  
0.00254 [ .000100 ] MIN THK PER MIL-T-10727

FOR ORDER ENTRY

DO NOT SCALE PRINT. UNLESS SPECIFIED TOLERANCES ON: 2 PL. DEC ± 0.201.0000 ANGLES ± °

AMP 1470-15 REV 3-92	04-FEB-94	07:46:10	0026463	/files/dept1123/dwg1123/u.solistrand/u.butl-splice
AMP INCORPORATED	Harrisburg, PA 17105-3608	36959	PART NO	
AMP INCORPORATED	Harrisburg, PA 17105-3608	00779	CAGE CODE	
AMP INCORPORATED	Harrisburg, PA 17105-3608	36959	DRAWING NO	
AMP INCORPORATED	Harrisburg, PA 17105-3608	2:1	SCALE	
AMP INCORPORATED	Harrisburg, PA 17105-3608	1 OF 1	SHEET	

CUSTOMER DRAWING