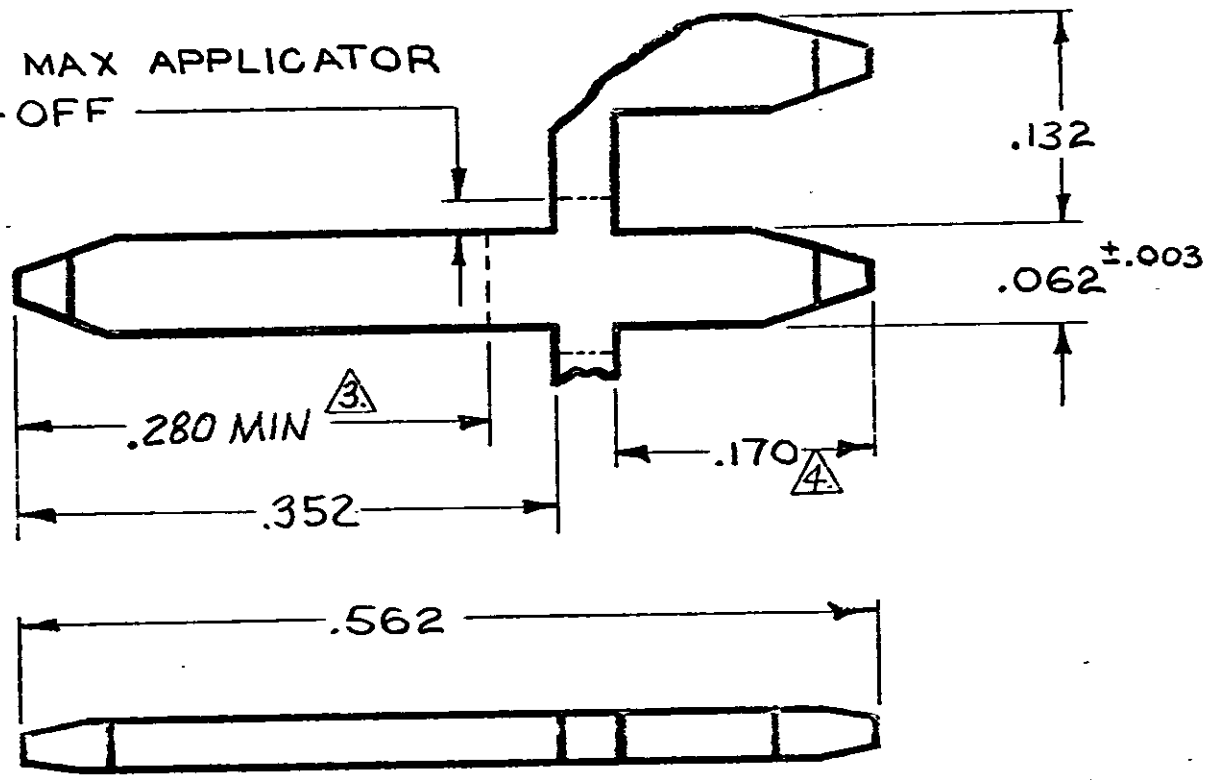


PKT NUMBER	MATERIAL-FINISH
61154-1	.031 BRASS - PRE-TIN $\Delta 5$
61154-2	.031 BRASS - NONE
61154-3	.031 BRASS - GOLD
61154-4	.031 BRASS - TIN
61154-5	.031 BRASS - GOLD WITH TIN $\Delta 3 \Delta 4 \Delta 6$

1: MATES WITH .031 x .062 TAB RCPT.
 2- TO BE INSERTED INTO A .060 ± 0.002 DIA HOLE IN .062/.093 THICK P.C. BOARD.
 $\Delta 3$ TO BE GOLD TIP PLATED OVER NICKEL PER THIS LENGTH

$\Delta 6$ OBSOLETE PARTS: OBSOLETE CIS STREAMLINING PER D.RENAUD/D.SINISI

.020 MAX APPLICATOR CUT-OFF



NOTES CONTINUED

$\Delta 4$ TO BE TIN PLATED PER THIS LENGTH.

$\Delta 5$ SOLDERABILITY DEPENDENT UPON STORAGE TIME AND CONDITIONS OF PROD. ACTIVE FLUX REQUIRED FOR GOOD WETTING. CONTINUOUS STRIP ON REELS

DIMENSIONS IN INCHES. DO NOT SCALE PRINT.

REV	DESCRIPTION	DATE	BY	CHK
V1	REVISED PER ECO-09-025273	16NOV09	KK AEG	
V	REV PER 0263-93 P.M.F	8/5/77		
U	ADDED NOTES AF-5136 W.S.F	1-14-78		
T	OBS. 61154-3 AF 1636 SS/ly	4/7/86		
S	OBSOLETE -4 AF 4563	1/21/78		
R	REVISED PER AF 0008	11/6/83		
P	REVISED PER A 6144	3/16/83		
N	ADDED 61154-5 111	2-4-83		
M	ADDED -4 TIN	1/17/78		
L	ADDED NOTE #2	1/17/78		
K	ADDED -2-3	1/1/78		
J	REDWN WITH CHNG	12-14-77		

© 1977 BY AMP INCORPORATED. ALL RIGHTS RESERVED. AMP PRODUCTS COVERED BY PATENTS AND/OR PATENTS PENDING

CUSTOMER COPY REFERENCE ONLY

MATERIAL AND FINISH	
WIRE - RANGE - INSULATION	TYPE
— — —	— — —
TOLERANCE EXCEPT AS NOTED	SCALE
± .015	1" = 0"

AMP		AMP INCORPORATED HARRISBURG, PENNA.	
CLASS	— — —		
NO	61154		
REV	V1		

DR	O. J. Kelly	DATE	1-25-77
CHK	B. OLSSON	DATE	1-25-77

NAME POST, CONTACT