

4

3

2

1

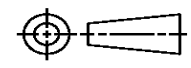
THIS DRAWING IS UNPUBLISHED. RELEASED FOR PUBLICATION
 © COPYRIGHT ALL RIGHTS RESERVED.

LOC	DIST	REVISIONS			
P	LTR	DESCRIPTION	DATE	DWN	APVD
	A1	ECR-16-009821	12JUL2016	GK	SD

REPLACED BY OCEAN STYLE APPLICATOR PART NUMBER 2836084-2

FOR REPLACEMENT PARTS FOR APPLICATOR 1855311
 REFER TO ADDITIONAL PAGE(S). SPARE PARTS KIT (IF LISTED)
 WILL REMAIN AVAILABLE.

THE REPLACEMENT OCEAN STYLE APPLICATOR HAS THE
 SAME TERMINATOR/PRESS INTERFACE AS APPLICATOR
 1855311

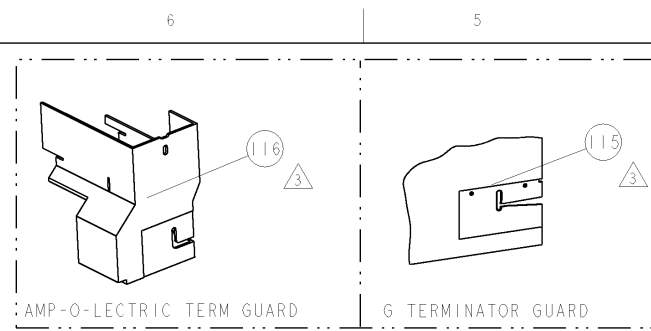
THIS DRAWING IS A CONTROLLED DOCUMENT.		DWN	GOPALAKRISHNA HV		
DIMENSIONS:		CHK	GOPALAKRISHNA HV		
		TOLERANCES UNLESS OTHERWISE SPECIFIED:		APVD	
		0 PLC ± 1 PLC ± 2 PLC ± 3 PLC ± 4 PLC ± ANGLES ±		STOUGH DALE	
MATERIAL		PRODUCT SPEC		NAME	
FINISH		APPLICATION SPEC		FINE ADJUST SIDE FEED HDM APPLICATOR	
		WEIGHT	SIZE	CAGE CODE	DRAWING NO
			A3		©- 1855311
		CUSTOMER DRAWING		SCALE	SHEET 1 OF 2 REV A1



PART NUMBER	REV	FIRST USED	POWER UNIT	FEED TYPE	DESCRIPTION
1855311-1	A	122500-1	LEADMAKER	POST FEED	CUTS CARRIER
1855311-2	A	565435-5	BENCH MODEL K	PRE FEED	CUTS CARRIER
1855311-3	A	354500-1	BENCH MODEL G	PRE FEED	CUTS CARRIER
1855311-6	A	122500-1	LEADMAKER	POST FEED	CONTINUOUS CARRIER
7-1855311-7	A	-	-	-	SPARE PARTS

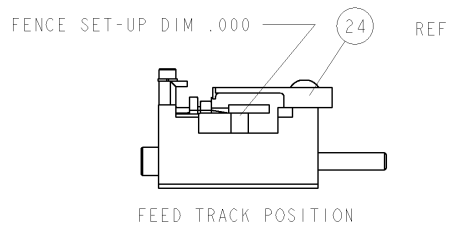
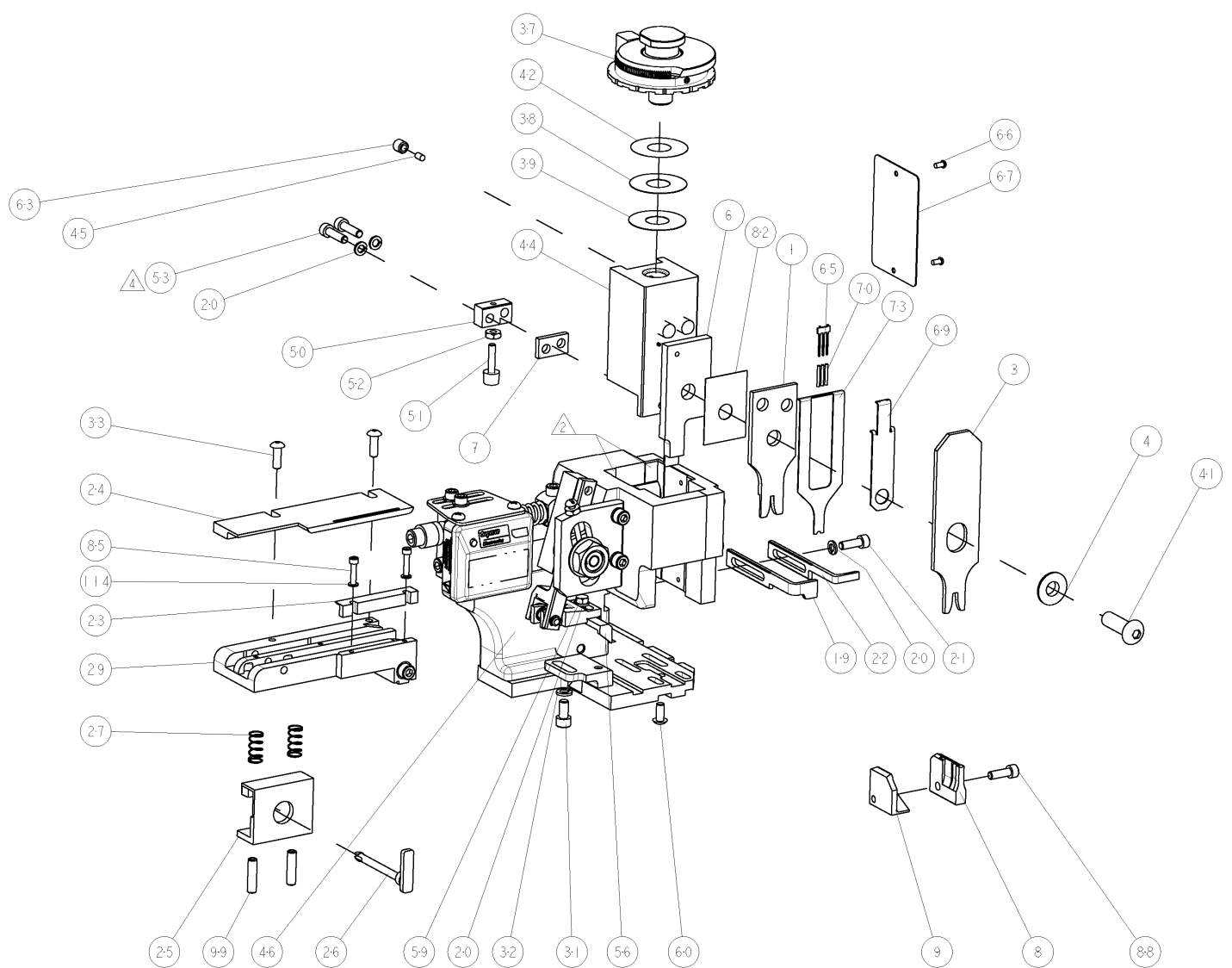
- △ RECOMMENDED SPARE PARTS
- △ GREASE LIGHTLY
- △ GUARD MUST BE IN PLACE WHEN OPERATING APPLICATOR IN A BENCH MACHINE.
- △ ITEM 53, CUT TO LENGTH AT ASSEMBLY.

*** WARNING**
ON INSTALLATION, SET WIRE DISC TO LARGEST WIRE SIZE SETTING. USE OF SETTINGS BELOW MIN. REQUIRED CRIMP HEIGHT SETTING WILL CAUSE DAMAGE TO CRIMP TOOLING.

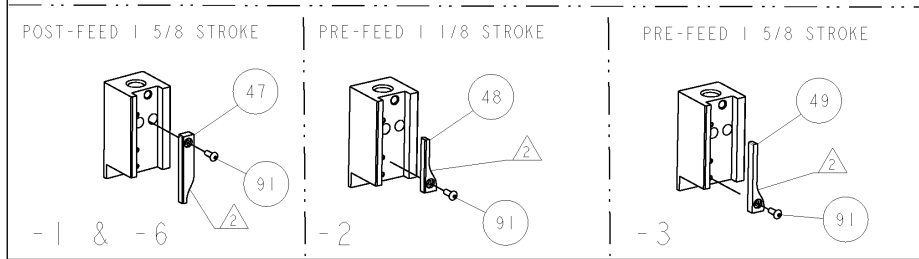


TERMINAL NAME: Ø.093 SOCKET					
TE TERM PN	MFR TERM PN	MOLEX TERMINAL - TE CRIMP SPECS		REF SETTING	
PIN		CRIMP HEIGHT	WIRE SIZE		
1572331-1	02-09-2101	.071±.002[1.80±0.05mm]	14AWG	A2	
1572331-2	02-09-6100	.058±.002[1.47±0.05mm]	16AWG	C5	
SOCKET	-	.051±.002[1.29±0.05mm]	18AWG	D8	
1572332-1	02-09-1102	.046±.002[1.17±0.05mm]	20AWG	E8	
1572332-2	02-09-5100				
1572332-3	02-09-5102				
CRIMP	SIZE	TYPE	RANGE		
-	-	WIRE .080 [2.03mm]	F	20-14 AWG	
-	-	INSUL .130 [3.30mm]	F	Ø.065-.161	
WIRE STRIP LENGTH	TERM APPL SPEC	FEED	APPLICATOR INSTRUCTIONS	SET UP GAGE	
.156-.188	NONE	.498	408-8040	458637-1	

LOC	DIST	REVISIONS			
A	66	REV	DESCRIPTION	DATE	BY
		A	RELEASED	16AUG2007	ROW GB



3	-	-	REF	-	455749-1	GUARD WINDOW	116	
3	-	REF	-	-	679532-1	INSERT, GUARD	115	
-	2	2	2	2	21024-2	WASHER, SPRG LOCK, REG NO 4	114	
-	2	2	2	2	5-21006-6	SCR, SET, CUP POINT 10-32 X .750	99	
-	1	1	1	1	1-21002-7	SCR, BTN SKT HD CAP 6-32 X .375	91	
-	1	1	1	1	2-21000-7	SCR, SKT HD CAP 8-32 X .500	88	
-	2	2	2	2	1-21000-5	SCR, SKT HD CAP 4-40 X .500	85	
-	1	1	1	1	455888-2	SPACER, CRIMPER	82	
-	1	1	1	1	1490525-3	DEPRESSOR, WIRE	73	
-	1	1	1	1	4088040	SF APPL INST 408-8040	72	
-	1	1	1	1	217238-1	GENERAL INSTRUCTION PKG	71	
-	3	3	3	3	2-23147-2	SPRING, COMPRESSION	70	
-	1	1	1	1	1490524-1	DEPRESSOR, SPACER	69	
-	1	1	1	1	461264-5	PLATE, IDENTIFICATION	67	
-	2	2	2	2	21017-2	SCREW, DRIVE	66	
-	1	1	1	1	1424350-1	HOLDER, PIN, WIRED	65	
-	1	1	1	1	21009-2	SCR, SET, SELF LOCKING 1/4-20 X .250	63	
-	1	1	1	1	22733-8	SCR, BHSC, SELF-LOCKING, 8-32 X .375	60	
-	1	1	1	1	2-22603-0	SCR, HEX HD CAP 8-32 X .312	59	
-	1	1	1	1	4-694433-4	FEED PAWL	56	
4	-	2	2	2	2-21000-8	SCR, SKT HD CAP 8-32 X .625	53	
-	1	1	1	1	21018-5	NUT, HEX, REG 6-32	52	
-	1	1	1	1	811242-2	BUMPER, HOLD DOWN	51	
-	1	1	1	1	690753-1	SPACER, TONKER	50	
-	-	1	-	-	690602-6	CAM, PRE FEED, 1 5/8	49	
-	-	1	-	-	690602-5	CAM, PRE FEED, 1 1/8	48	
-	1	-	-	-	690501-4	CAM, POST FEED, 1 5/8	47	
-	1	1	1	1	459456-1	APPL, BASIC SUB ASSY (SIDE WISE MOCA)	46	
-	1	1	1	1	690191-1	PLUG, NYLON	45	
-	1	1	1	1	455673-8	RAM, SIDE FEED	44	
-	1	1	1	1	469367-3	SHIM	42	
-	1	1	1	1	7-21002-9	SCR, BTN SKT HD CAP 5/16-24 X 1.00	41	
-	1	1	1	1	690125-1	SHIM SUB-ASSY	39	
-	1	1	1	1	469367-1	SHIM	38	
-	1	1	1	1	879103-2	FINE ADJUST HEAD ASSEMBLY	37	
-	2	2	2	2	2-21002-2	SCR, BTN SKT HD CAP 8-32 X .500	33	
-	1	1	1	1	21024-5	WASHER, SPRG LOCK, REG NO 10	32	
-	1	1	1	1	3-21000-4	SCR, SKT HD CAP 10-32 X .375	31	
-	1	1	1	1	1-318756-4	STRIP GUIDE PLATE ASSY	29	
-	2	2	2	2	8-22281-7	SPRING, COMPRESSION	27	
-	1	1	1	1	690546-1	LEVER, DRAG RELEASE	26	
-	1	1	1	1	2-690754-1	DRAG, SPECIAL	25	
-	1	1	1	1	1320860-2	STRIP GUIDE, REAR	24	
-	1	1	1	1	1-690712-6	FRONT STRIP GUIDE	23	
-	1	-	-	-	690472-2	STRIPPER	22	
-	1	1	1	1	2-21000-7	SCR, SKT HD CAP 8-32 X .500	21	
-	4	4	4	4	21024-4	WASHER, SPRG LOCK, REG NO 8	20	
-	-	1	-	-	691353-1	STRIPPER	19	
-	-	-	-	-	-	-	13	
-	-	-	-	-	-	-	12	
-	-	-	-	-	-	-	11	
-	-	-	-	-	-	-	10	
△	-	1	1	1	1	2-853714-0	PLATE, REAR SHEAR	9
△	1	1	1	1	1	1633054-2	ANVIL, SPECIAL	8
-	1	1	1	1	1	240641-7	SPACER	7
△	-	1	1	1	1	1-853720-4	BLADE, SLUG	6
-	1	1	1	1	1	238009-4	BLOCK, FL CRIMPER SPACER	4
△	1	1	1	1	1	6-456134-6	CRIMPER, INSULATION F PREMIUM	3
-	-	-	-	-	-	-	2	
△	1	1	1	1	1	3-456405-9	CRIMPER, WIRE PREMIUM	1



DIMENSIONS: INCHES		TOLERANCES UNLESS OTHERWISE SPECIFIED:		APPROVED: 25JUL2007	
0 PLC	±	1 PLC	±0.1	NAME: FINE ADJUST SIDE FEED HDM APPLICATOR	
2 PLC	±0.01	3 PLC	±0.001	SIZE: CAGE CODE: DRAWING NO: 00779 ©1855311	
4 PLC	±0.0001	ANGLES	±0.0001	RESTRICTED TO: -	
MATERIAL: -		FINISH: -		CUSTOMER DRAWING: -	
WEIGHT: -		SCALE: 3:5		SHEET 1 OF 1 REV A	