

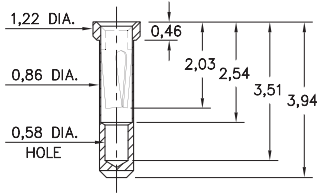
PIN RECEPTACLES

**FOR 0,38 - 0,51 DIAMETER PINS (#11 CONTACT)
AND 0,38 - 0,56 DIAMETER PINS (#21 CONTACT)
(SEE SPECIFIC CONTACT RANGE ON PAGE 251)**

4716

4716-0-15-XX-21-XX-10-0

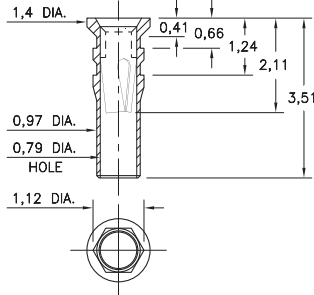
Solder mount in 0,97 min. mounting hole



6553

6553-0-15-XX-11-XX-10-0

Hex press-fit in 1,04 plated through-hole



SPECIFICATIONS:

Shell Material: Brass Alloy 360, 1/2 Hard

Contact Material: Beryllium Copper Alloy 172, HT

Dimensions: Millimeters

Tolerances On: Lengths: $\pm 0,13$

Diameters: $\pm 0,051$

Angles: $\pm 2^\circ$



ORDER CODE: XXXX - 0 - 15 - XX - X1 - XX - 10 - 0

BASIC PART #

SPECIFY SHELL FINISH:

- 01 5,08 μ m TIN/LEAD OVER NICKEL
- ◆ 80 5,08 μ m TIN OVER NICKEL (RoHS)
- ◆ 15 0,25 μ m GOLD OVER NICKEL (RoHS)

SPECIFY CONTACT FINISH:

- 02 2,54 μ m TIN/LEAD OVER NICKEL
- ◆ 84 2,54 μ m TIN OVER NICKEL (RoHS)
- ◆ 27 0,76 μ m GOLD OVER NICKEL (RoHS)

SELECT CONTACT:

#11 or #21 CONTACT (DATA ON PAGE 251)

(For alternate contact choices, see group A on page 248)