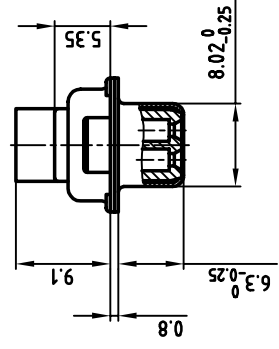
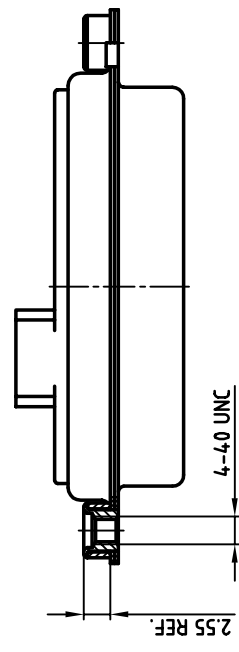
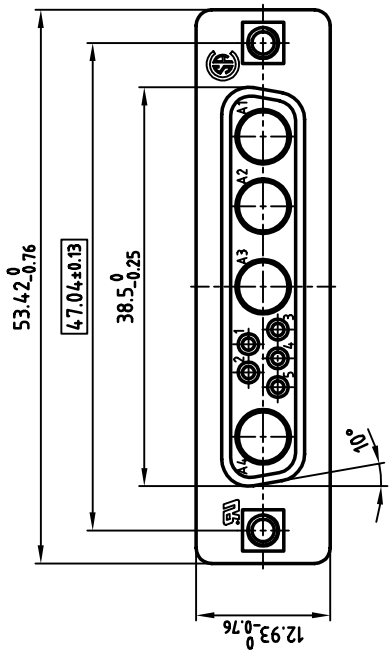
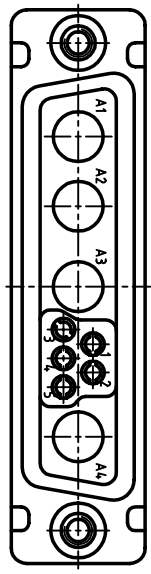


used for: D-SUB COMBINATION CRIMP



**NOTES:**

1. METALSHELLS: STEEL; min. 320µ" TIN
2. INSULATORS: PBT GF UL 94 V-0, BLACK
3. THREADED INSERT: COPPER ALLOY; min. 200µ" TIN over 80µ" NICKEL
4. COLLAR: COPPER ALLOY; min. 200µ" TIN over 80µ" NICKEL
5. MAXIMUM TORQUE VALUE FOR THREAD: 6" LBS
6.   = CRITICAL DIMENSION: SPC



THIS DRAWING MAY NOT BE COPIED OR REPRODUCED IN ANY WAY, AND MAY NOT BE PASSED ON TO A THIRD PARTY WITHOUT WRITTEN PERMISSION.  
 OWNERSHIP AND COPYRIGHT OF CONEC GMBH DO NOT ALTER CAD DRAWING BY HAND

Directive 2002/95/EC  
 "RoHS"  
 Compliant

CONEC CORPORATION BRAMPTON, ONTARIO		tolerance		scale: 2:1	
		material:		SEE NOTES	
		title:		D-SUB COMBINATION FEMALE	
		name:		CRIMP STYLE 9W4S	
		date:		with threaded insert	
		drawn:		AutoCAD 2000	
		appd.:		13K1A461A	
		norm:		DIN-A	
		e-old:		3	
		dwg no.:		sh: 1/1	
		part no.:		3009W4S XK99A30X	
		rev. description		date	
		name			

