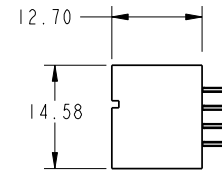
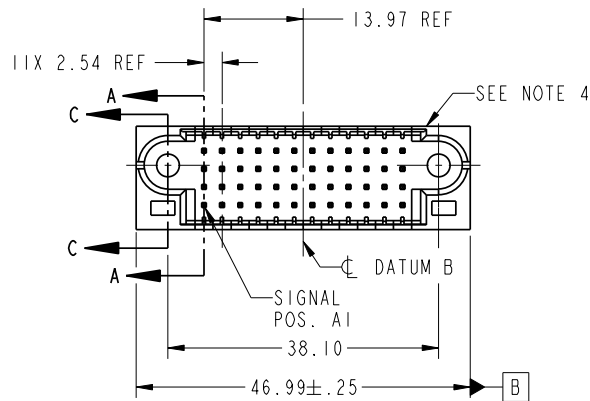


Tous droits strictement reserves. Reproduction ou communication a des tiers interdite sous quelque forme que ce soit sans autorisation écrite du propriétaire. Propriete de c FCI. Droits de reproduction FCI.



All rights strictly reserved. Reproduction or issue to third parties in any form whatever is not permitted without written authority from the proprietor. Property of FCI. Copyright FCI.

PRODUCT NO.	ROWS	SIGNAL												E2	
		E1	1	2	3	4	5	6	7	8	9	10	11		12
51952-111-- NOTE ③	D C B A		G	G	K	K	K	K	K	K	K	K	K	K	
		G	G	K	K	K	K	K	K	K	K	K	K	K	
		G	G	K	K	K	K	K	K	K	K	K	K	K	
		G	G	K	K	K	K	K	K	K	K	K	K	K	



CODE	DIM "M" MATING LENGTH	CONTACT TYPE
G	[6.86]	SIGNAL
K	[5.59]	SIGNAL

mat'l code				tolerances unless otherwise specified				CUSTOMER			
lfr	ecn no.	dr	date	linear	0.X ± 0.3			COPY		www.fciconnect.com	
A	DG07-0016	JMG	01/12/07		0.XX ± 0.13			projection		title 48S	
B	DG07-0357	JULIA	09/10/07	angles	0.XXX ± 0.051					VERTICAL PRESS-FIT HEADER	
				dr	JM GUO	01/12/07				product family PwrBlade code 213	
				enrg	RYAN YUAN	01/12/07		scale 1:1		size dwg no	
				chr	BEER FU	01/12/07				51952-111	
				appd	JOSEPH HSIA	01/12/07				sheet 1 of 4	
sheet index	revision	B	B	B	B						
	sheet	1	2	3	4						

cage code 22526

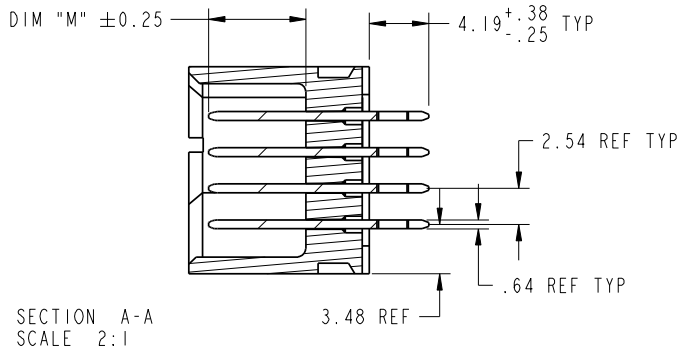
Pro/E

Tous droits strictement reserves. Reproduction ou communication a des tiers interdite sous quelque forme que ce soit sans autorisation ecrite du proprietaire. Propriete de c FCI. Droits de reproduction FCI.

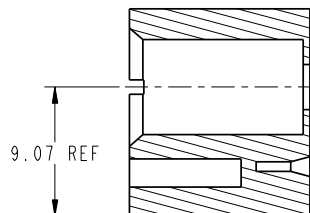


All rights strictly reserved. Reproduction or issue to third parties in any form whatever is not permitted without written authority from the proprietor. Property of FCI. Copyright FCI.

PRODUCT NUMBER
51952-111__
NOTE 3



SECTION A-A
SCALE 2:1



SECTION C-C
SCALE 2:1

mat'l code				tolerances unless otherwise specified		CUSTOMER		FCI	
lfr	ecr no.	dr	date	linear	0.X ±0.3	COPY		www.fciconnect.com	
B					0.XX ±0.13	projection	title 48S		
				angles	0.XXX ±0.051		VERTICAL PRESS-FIT HEADER		
				dr	0° ±2°		product family	PwrBlade	code
				enrg	JM GUO 01/12/07	scale	size	dwg no	213
				chr	RYAN YUAN 01/12/07	1:1	A	51952-111	sheet
				appd	BEER FU 01/12/07				2 of 4
					JOSEPH HSIA 01/12/07				
sheet index	revision sheet								

cage code 22526

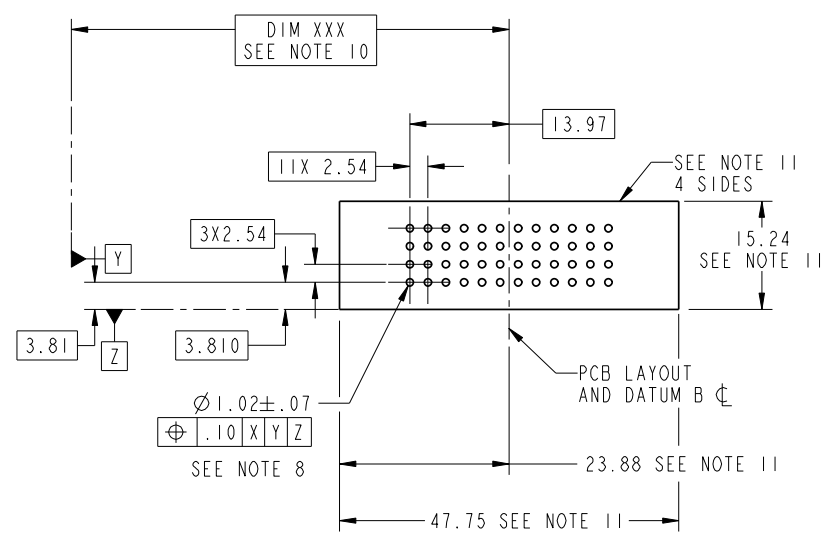
Pro/E

Tous droits strictement reserves. Reproduction ou communication a des tiers interdite sous quelque forme que ce soit sans autorisation écrite du propriétaire. Propriete de c FCI. Droits de reproduction FCI.



All rights strictly reserved. Reproduction or issue to third parties in any form whatever is not permitted without written authority from the proprietor. Property of FCI. Copyright FCI.

PRODUCT NUMBER
51952-111__
NOTE 3



mat'l code				tolerances unless otherwise specified		CUSTOMER		FCI	
lfr	ecn no.	dr	date	linear	0.X ±0.3	COPY		www.fciconnect.com	
B					0.XX ±0.13	projection		title	
				angles	0.XXX ±0.051			48S	
				dr	0° ±2°	MM		VERTICAL PRESS-FIT HEADER	
				enr	JM GUO 01/12/07	scale		product family PwrBlade code	
				chr	RYAN YUAN 01/12/07	1:1		size	
				appd	BEER FU 01/12/07			dwg no	
					JOSEPH HSIA 01/12/07			51952-111	
sheet index	revision sheet							213	
								sheet 3 of 4	

cage code 22526

Pro/E

Tous droits strictement réservés. Reproduction ou communication a des tiers interdite sous quelque forme que ce soit sans autorisation écrite du propriétaire. Propriété de c FCI. Droits de reproduction FCI.



All rights strictly reserved. Reproduction or issue to third parties in any form whatever is not permitted without written authority from the proprietor. Property of FCI. Copyright FCI.

PRODUCT NUMBER
51952-111__
NOTE 3

NOTES:

1. DIMENSIONS AND TOLERANCES ARE IN ACCORDANCE WITH ASME Y14.5M, 1994 UNLESS OTHERWISE SPECIFIED.

CONNECTOR NOTES:

② HOUSING MATERIAL: UL 94 V-0 GLASS FILLED
HIGH-TEMP THERMOPLASTIC
POWER CONTACT MATERIAL: COPPER ALLOY
SIGNAL PIN MATERIAL: COPPER ALLOY

3. PLATING:
51952-111 ,51952-111LF PLATING SPEC. WAS SHOWN IN THE PRINT OF 10064183.

④ MANUFACTURER'S NAME, P/N, AND DATE CODE TO APPEAR ON THIS SURFACE.

5. PRODUCT SPECIFICATION GS-12-149.
APPLICATION SPECIFICATION BUS-20-067.

6. PACKAGED IN TRAYS.

PCB NOTES:

7. ALL HOLE DIAMETERS ARE FINISHED HOLE SIZE.

8. MOUNTING HOLES, WHERE APPLICABLE, ARE UNPLATED.

⑨ $\varnothing 1.151 \pm 0.025$ DRILLED HOLES PLATED WITH
0.008 MIN SnPb OR Sn OVER 0.03
TO 0.08 Cu PLATING TO ACHIEVE
 $\varnothing 1.02 \pm .07$ HOLE.

⑩ "DIM XXX" TO BE DETERMINED BY THE CUSTOMER.

⑪ CONNECTOR KEEP-OUT ZONE.

12. FOR PRESS FIT APPLICATION USE FCI CAM TOOL 430169-XXX.

mat'l code				tolerances unless otherwise specified		CUSTOMER		FCI	
lfr	ecr no.	dr	date	linear	$0.X \pm 0.3$	COPY		www.fciconnect.com	
B				linear	$0.XX \pm 0.13$	projection	title 48S		
				angles	$0.XXX \pm 0.051$		VERTICAL PRESS-FIT HEADER		
				dr	$0^\circ \pm 2^\circ$		product family	PwrBlade	code
				enrg	JM GUO 01/12/07	scale	size	dwg no	213
				chr	RYAN YUAN 01/12/07	1:1	51952-111		sheet
				appd	BEER FU 01/12/07		A		4 of 4
					JOSEPH HSIA 01/12/07				
sheet index	revision sheet								

cage code 22526

Pro/E