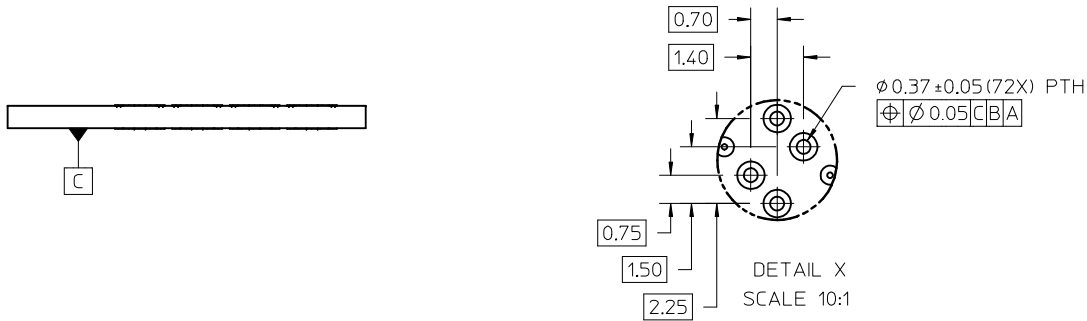
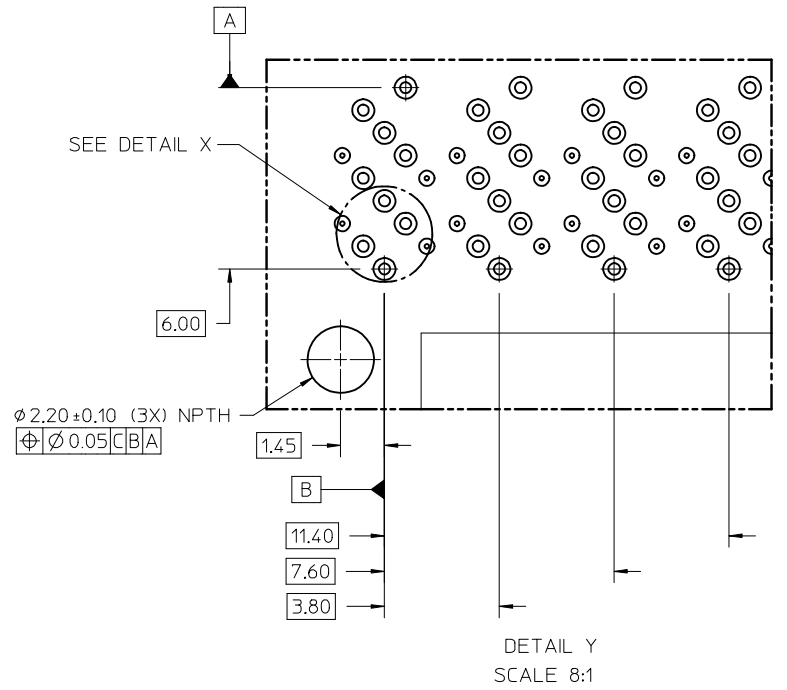
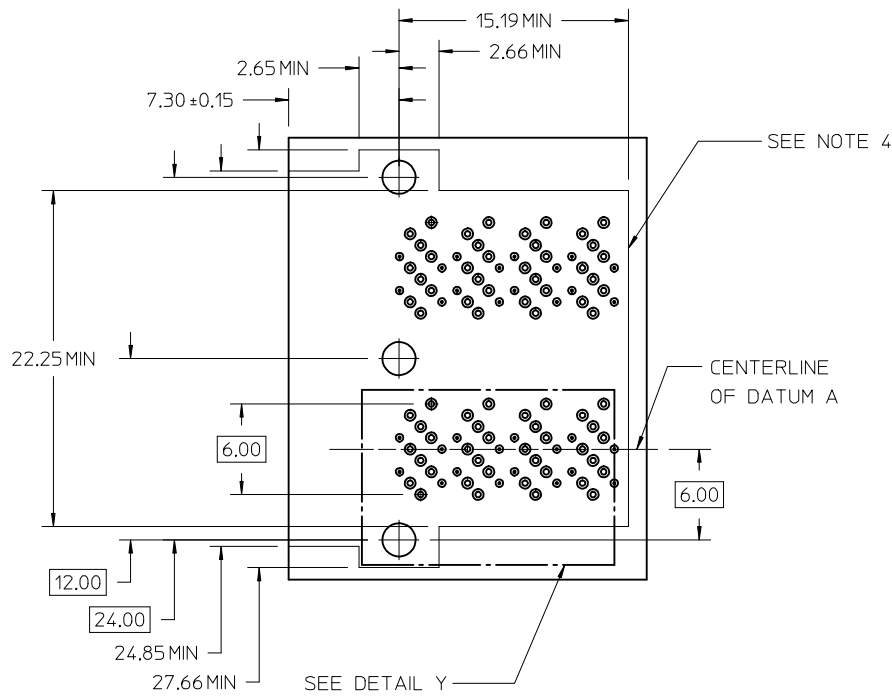


- NOTES:
- MATERIALS:
CONNECTOR HOUSING: HIGH TEMPERATURE THERMOPLASTIC
GLASS FILLED, UL 94V-0
TERMINALS: COPPER ALLOY
 - FINISHES:
CONTACT AREA: 0.76µM MIN GOLD OVER 2.54µM MIN NICKEL
TAIL AREA:
OPTION 1: 0.76µM-1.52µM TIN/LEAD (90/10) OVER 2.54µM MIN NICKEL
OPTION 2: 0.76µM-1.52µM TIN (LEAD FREE) OVER 2.54µM MIN NICKEL
 - PRODUCT SPECIFICATION: PS-76867-001
 - PACKAGING SPECIFICATION: PK-76867-001
 - MATES WITH: MOLEX CABLE SERIES 100171, 100189, 100190 & 100191
 - MOUNTING HARDWARE NOT SUPPLIED, REFER TO APPLICATION SPECIFICATION AS-76867-001
 - APPROXIMATE MOLDING GATE LOCATION
 - PLUG MODULE PCB LAYOUT REFER TO SD-76866-9900

PLATING OPT.	MATERIAL NO.
OPTION 1	76867-0002
OPTION 2	76867-0012

REV'D GATE LOCATION EC NO: UCP2015-4516 DRWN: TMCLELL 2015/04/28 CHKD: TMCLELL AND 2015/04/28 APPR: TMCLELL 2015/04/28	QUALITY SYMBOLS 	GENERAL TOLERANCES (UNLESS SPECIFIED)		DIMENSION STYLE MM ONLY	SCALE 4:1	DESIGN UNITS METRIC	THIRD ANGLE PROJECTION
		4 PLACES ± --- ± --- 3 PLACES ± --- ± .005 2 PLACES ± 0.13 ± .010 1 PLACE ± 0.25 ± --- 0 PLACE ± ±	DRAWN BY DATE KLANG 2009/05/15	TITLE IPASS PLUS HD 1X2 ASSEMBLY INTERNAL			
		ANGULAR ±1/2° DRAFT WHERE APPLICABLE MUST REMAIN WITHIN DIMENSIONS	CHECKED BY DATE MBANAKIS 2010/11/17	molex			
		SIZE C	APPROVED BY DATE MBANAKIS 2010/11/17	MATERIAL NO. SEE CHART	DOCUMENT NO. SD-76867-002		

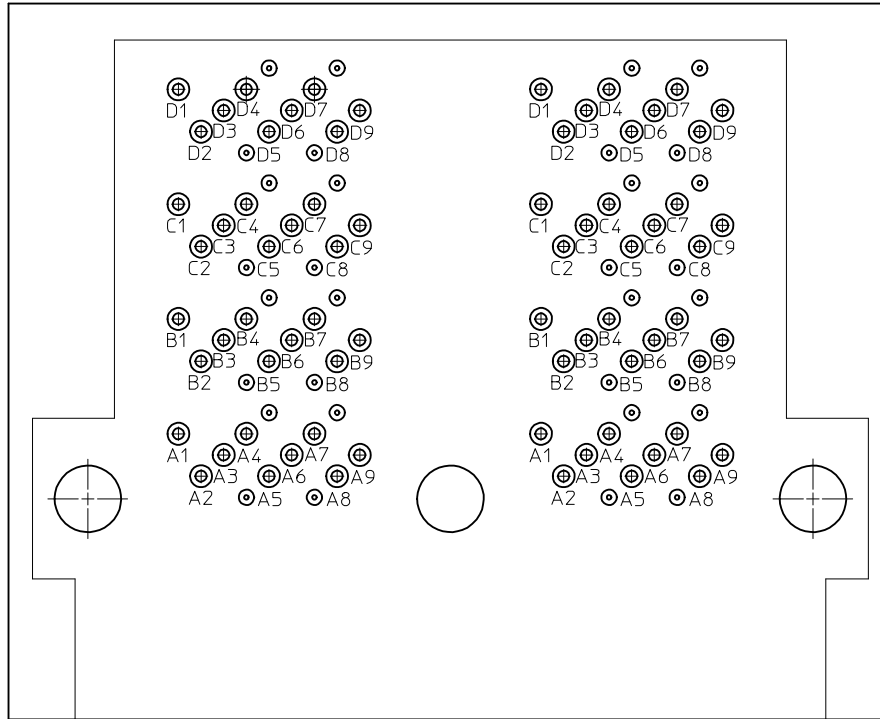
RECOMMENDED FOOTPRINT



- NOTES:
1. RECOMMENDED DRILL SIZE AND ANNULAR RING FOR A 0.37ϕ FINISHED PTH - REFER TO APPLICATION SPECIFICATION AS-76867-001
 2. MINIMUM RECOMMENDED SPACING: 14.00MM
 3. MINIMUM PCB THICKNESS: 1.57MM
 4. CONNECTOR KEEP OUT AREA

SEE SHEET 1 DEC NO: UCP2015-4516 DRWN: MCLELL 2015/04/28 CHKD: MCLELLAND 2015/04/28 APPR: MCLELL 2015/04/28	DESCRIPTION B10	QUALITY SYMBOLS	GENERAL TOLERANCES (UNLESS SPECIFIED)	DIMENSION STYLE MM ONLY	SCALE 4:1	DESIGN UNITS METRIC	THIRD ANGLE PROJECTION
		▽=0	mm INCH	DRAWN BY DATE KLANG 2009/05/15	TITLE IPASS PLUS HD 1X2 ASSEMBLY INTERNAL		SHEET NO. 2 OF 3
		▽=0	4 PLACES ± --- ± ---	CHECKED BY DATE	APPROVED BY DATE MBANAKIS 2010/11/17		
		▽=0	3 PLACES ± --- ± .005	MATERIAL NO.	DOCUMENT NO. SD-76867-002	THIS DRAWING CONTAINS INFORMATION THAT IS PROPRIETARY TO MOLEX INCORPORATED AND SHOULD NOT BE USED WITHOUT WRITTEN PERMISSION	

FOOTPRINT CIRCUIT IDENTIFICATION



SEE SHEET 1 EC NO: UCP2015-4516 DRWN:MCLELL 2015/04/28 CHKD:MCLELLAND 2015/04/28 APPR:MCLELL 2015/04/28	DESCRIPTION REV	QUALITY SYMBOLS	GENERAL TOLERANCES (UNLESS SPECIFIED)		DIMENSION STYLE	SCALE	DESIGN UNITS	THIRD ANGLE PROJECTION		
			mm	INCH	MM ONLY	8:1	METRIC			
		▽=0	4 PLACES ±---	±---	DRAWN BY	DATE	TITLE			
		▽=0	3 PLACES ±---	±.005	KLANG	2009/05/15	IPASS PLUS HD 1X2 ASSEMBLY INTERNAL			
	▽=0	2 PLACES ±0.13	±.010	CHECKED BY	DATE	molex				
	1 PLACE ±0.25	±---	APPROVED BY	DATE	SD-76867-002					
		0 PLACE ±	±	MBANAKIS	2010/11/17	SHEET NO. 3 OF 3				
		ANGULAR ±1/2°		MATERIAL NO.		DOCUMENT NO.				
B10		DRAFT WHERE APPLICABLE MUST REMAIN WITHIN DIMENSIONS		SEE CHART						
				SIZE	THIS DRAWING CONTAINS INFORMATION THAT IS PROPRIETARY TO MOLEX INCORPORATED AND SHOULD NOT BE USED WITHOUT WRITTEN PERMISSION					