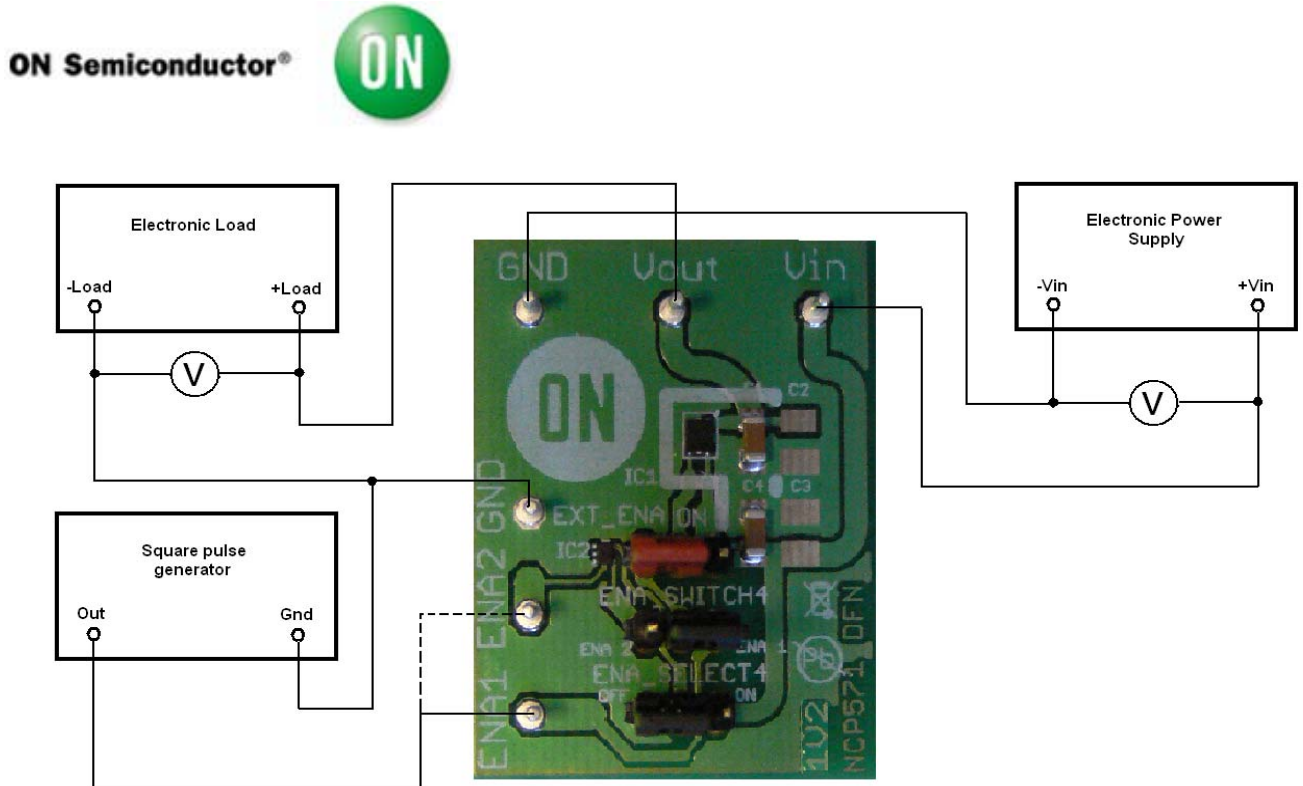


Test Procedure for NCP571 DFN6 1V2 LDO Demoboard



1. Enable pin connected to Vin

1. Check the position of jumper and correct it if necessary.

- a) EXT_ENA - ON
- b) ENA_SELECT - ENA1 or ENA2
- c) POWER ENA2 - OFF

2. Connect the test setup as shown Figure 1

3. Apply an input voltage $V_{in} = 2.7\text{ V}$

4. Apply $I_{out} = 0\text{ mA}$ load.

5. Check that V_{out} is **1.2 V**.

6. Increase I_{out} up to **150 mA**

7. Increase V_{in} up to **12 V** and decrease the load in accordance with SOA

8. Power down the Load

9. Power down the V_{cc}

10. End of test

