

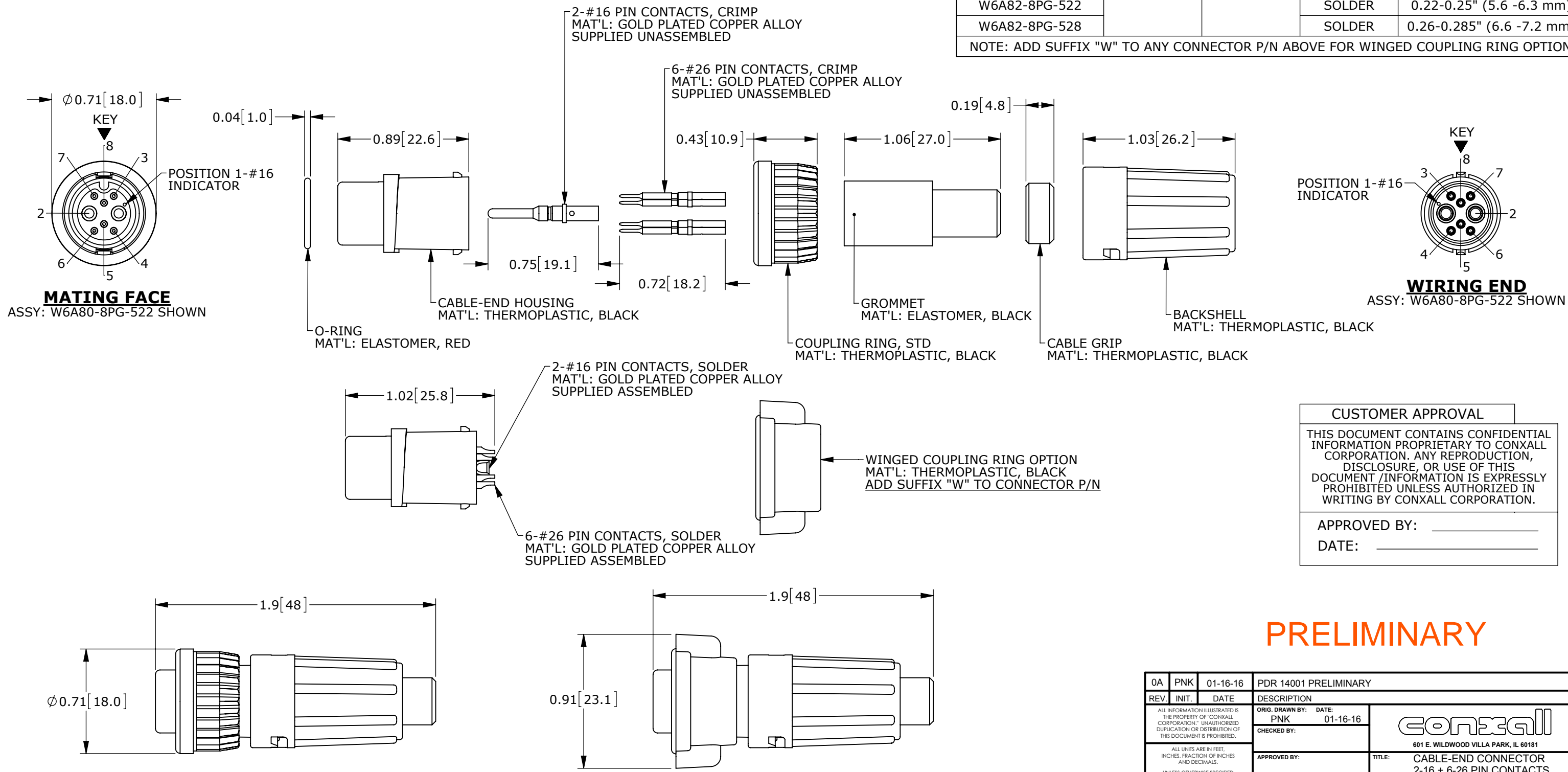
NOTES:
 1. ALL PARTS TO BE BULK PACKED.
 2. SEE DRAWING HPMIMIX FOR HOLE PATTERN.
 3. DIMENSIONS ARE FOR REFERENCE ONLY.

CONNECTOR P/N	POSITIONS		CONTACT STYLE	CABLE O.D. RANGE
	#16	#26		
W6A80-8PG-513	2	6	CRIMP	0.13-0.15" (3.3 -3.8 mm)
W6A80-8PG-516			CRIMP	0.16-0.18" (4.1 -4.6 mm)
W6A80-8PG-519			CRIMP	0.19-0.21" (4.8 -5.3 mm)
W6A80-8PG-522			CRIMP	0.22-0.25" (5.6 -6.3 mm)
W6A80-8PG-528			CRIMP	0.26-0.285" (6.6 -7.2 mm)
W6A82-8PG-513			SOLDER	0.13-0.15" (3.3 -3.8 mm)
W6A82-8PG-516			SOLDER	0.16-0.18" (4.1 -4.6 mm)
W6A82-8PG-519			SOLDER	0.19-0.21" (4.8 -5.3 mm)
W6A82-8PG-522			SOLDER	0.22-0.25" (5.6 -6.3 mm)
W6A82-8PG-528			SOLDER	0.26-0.285" (6.6 -7.2 mm)

NOTE: ADD SUFFIX "W" TO ANY CONNECTOR P/N ABOVE FOR WINGED COUPLING RING OPTION

CUSTOMER PRINT

PART NUMBER: W6A8X-8PG-5XX_CD

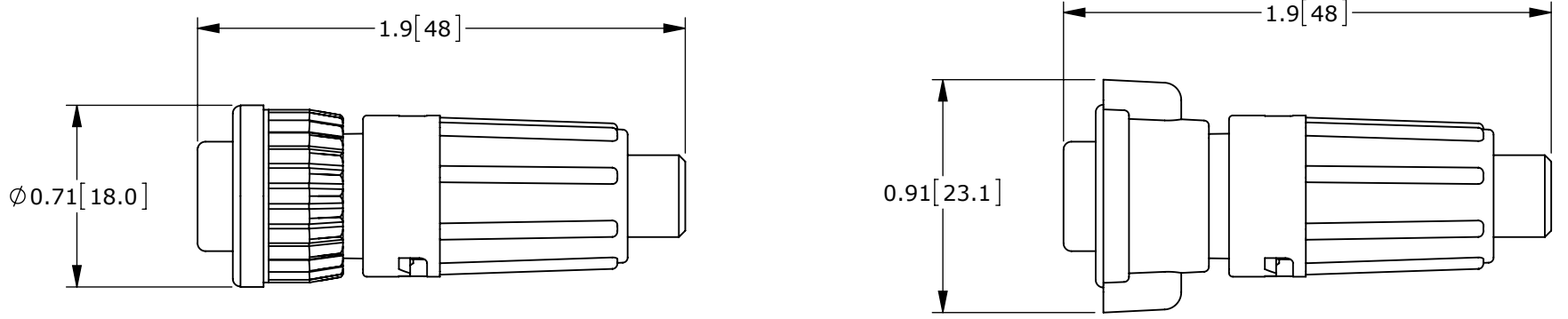


CUSTOMER APPROVAL

THIS DOCUMENT CONTAINS CONFIDENTIAL INFORMATION PROPRIETARY TO CONXALL CORPORATION. ANY REPRODUCTION, DISCLOSURE, OR USE OF THIS DOCUMENT /INFORMATION IS EXPRESSLY PROHIBITED UNLESS AUTHORIZED IN WRITING BY CONXALL CORPORATION.

APPROVED BY: _____
 DATE: _____

PRELIMINARY



SHOWN ASSEMBLED WITH STANDARD COUPLING RING

SHOWN ASSEMBLED WITH WINGED COUPLING RING

RoHS COMPLIANT

0A	PNK	01-16-16	PDR 14001 PRELIMINARY
REV.	INIT.	DATE	DESCRIPTION
			ORIG. DRAWN BY: PNK DATE: 01-16-16
<small>ALL INFORMATION ILLUSTRATED IS THE PROPERTY OF CONXALL CORPORATION. UNAUTHORIZED DUPLICATION OR DISTRIBUTION OF THIS DOCUMENT IS PROHIBITED.</small>			<p>601 E. WILDWOOD VILLA PARK, IL 60181</p>
<small>ALL UNITS ARE IN FEET, INCHES, FRACTION OF INCHES AND DECIMALS. UNLESS OTHERWISE SPECIFIED TOLERANCES: 3 PLACE DECIMALS ±.005 ANGLES ±1° FRACTIONS ±1/16</small>			
<small>APPROVED BY:</small>		<small>TITLE:</small> CABLE-END CONNECTOR 2-16 + 6-26 PIN CONTACTS MINI-CON-X POWER/SIGNAL	<small>CUSTOMER:</small> STANDARD PRODUCT
<small>SCALE:</small> NTS	<small>SIZE:</small> B	<small>SHEET:</small> 1 OF 1	<small>PART NUMBER:</small> W6A8X-8PG-5XX_CD
<small>FILE:</small> W6A8X-8PG-5XX_CD	<small>DIRECTORY:</small> SLW	<small>REV:</small> 0A	