

## Housing - VC-MEMV-T4-Z-M25 - 1886582

Please be informed that the data shown in this PDF Document is generated from our Online Catalog. Please find the complete data in the user's documentation. Our General Terms of Use for Downloads are valid (<http://phoenixcontact.com/download>)



Sleeve housing with EMC coating and conductive seal, with metric cable entry, locking screws with cylinder head, type 4

The illustration shows version VC-MEMV-T3-Z-M25



### Key commercial data

Packing unit	1 pc
Weight per Piece (excluding packing)	355.34 GRM
Custom tariff number	85389099
Country of origin	Poland

### Technical data

#### Dimensions

Height	75 mm
Width	33 mm
Length	104 mm

#### Ambient conditions

Ambient temperature (operation)	-40 °C ... 125 °C
---------------------------------	-------------------

#### General

Type	VC4
Housing type	Sleeve housings
Color	nickel
Locking type	Screw locking, cylinder head
Tightening torque, mounting screw	1.5 Nm $\pm$ 0.3 Nm
No. of cable outlets	1
Cable exit	Angled
Screw connection	none

# Housing - VC-MEMV-T4-Z-M25 - 1886582

## Technical data

### General

Type of the screw connection	M25
Housing material	Zinc die-cast, surface bronzed and nickel-plated
Housing surface material	Nickel-plated
Seal material	EPDM, conductive
Material of locking screw	V2A

## Classifications

### eCl@ss

eCl@ss 4.0	27140816
eCl@ss 4.1	27140816
eCl@ss 5.0	27371205
eCl@ss 5.1	27371205
eCl@ss 6.0	27371205
eCl@ss 7.0	27371205
eCl@ss 8.0	27440202

### ETIM

ETIM 2.0	EC000437
ETIM 3.0	EC000437
ETIM 4.0	EC000437
ETIM 5.0	EC000437

### UNSPSC

UNSPSC 6.01	31261502
UNSPSC 7.0901	31261502
UNSPSC 11	31261502
UNSPSC 12.01	31261502
UNSPSC 13.2	31261502

## Approvals

### Approvals

---

Approvals

GOST

---

# Housing - VC-MEMV-T4-Z-M25 - 1886582

## Approvals

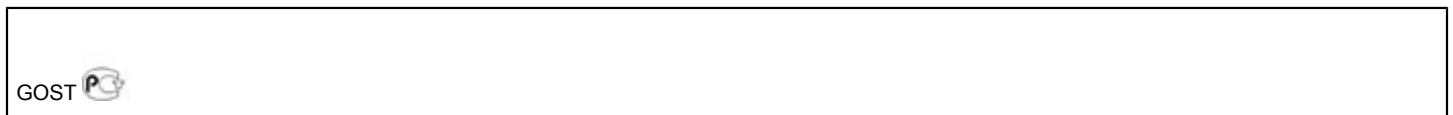
Ex Approvals

---

Approvals submitted

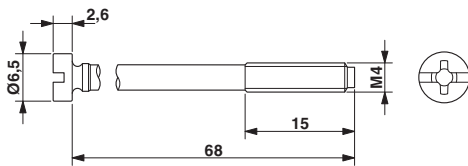
---

Approval details

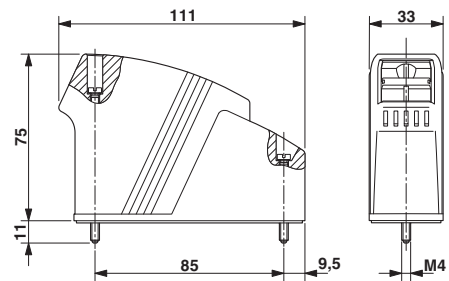


## Drawings

Dimensioned drawing



Dimensioned drawing



Dimensioned drawing

