

FEATURES

Noise figure: 1.5 dB at 4 GHz (see Figure 10)

Gain

16.5 dB at 1 GHz to 6 GHz

14 dB at 6 GHz to 11 GHz

Output power for 1 dB compression (P1dB): 18 dBm
at 1 GHz to 6 GHz

Supply voltage (V_{DD}): 5 V at 55 mA

Output third-order intercept (IP3): 30 dBm at 1 GHz to 6 GHz

50 Ω matched input/output (I/O)

24-lead lead frame chip scale package (LFCSP): 16 mm²

APPLICATIONS

Point to point radios

Point to multipoint radios

Military and space

Test instrumentation

GENERAL DESCRIPTION

The **HMC753** is a gallium arsenide (GaAs), monolithic microwave integrated circuit (MMIC), low noise, wideband amplifier housed in a leadless, 4 mm × 4 mm LFCSP. The amplifier operates between 1 GHz and 11 GHz, providing up to 16.5 dB of small signal gain at 1 GHz to 6 GHz, a 1.5 dB noise figure at 4 GHz (see Figure 10), and an output IP3 of 30 dBm at 1 GHz to 6 GHz, while requiring only 55 mA from a 5 V supply.

FUNCTIONAL BLOCK DIAGRAM

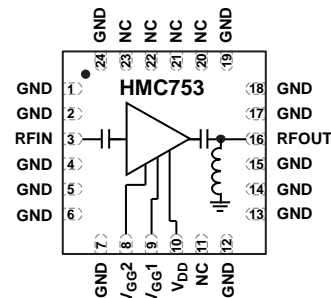


Figure 1.

13494-001

The P1dB output power of up to 18 dBm at 1 GHz to 6 GHz enables the low noise amplifier (LNA) to function as a local oscillator (LO) driver for balanced, I/Q, or image rejection mixers. The **HMC753** also features I/Os that are dc blocked and internally matched to 50 Ω, making the device ideal for high capacity microwave radios or very small aperture terminal (VSAT) applications.

HMC753* PRODUCT PAGE QUICK LINKS

Last Content Update: 02/23/2017

COMPARABLE PARTS

View a parametric search of comparable parts.

EVALUATION KITS

- HMC753LP4E Evaluation Board

DOCUMENTATION

Application Notes

- AN-1363: Meeting Biasing Requirements of Externally Biased RF/Microwave Amplifiers with Active Bias Controllers
- Broadband Biasing of Amplifiers General Application Note
- MMIC Amplifier Biasing Procedure Application Note
- Thermal Management for Surface Mount Components General Application Note

Data Sheet

- HMC753: 1 GHz to 11 GHz, GaAs, HEMT, MMIC Low Noise Amplifier Data Sheet

TOOLS AND SIMULATIONS

- HMC753 S-Parameter

REFERENCE MATERIALS

Quality Documentation

- Package/Assembly Qualification Test Report: LP4, LP4B, LP4C, LP4K (QTR: 2013-00487 REV: 04)

DESIGN RESOURCES

- HMC753 Material Declaration
- PCN-PDN Information
- Quality And Reliability
- Symbols and Footprints

DISCUSSIONS

View all HMC753 EngineerZone Discussions.

SAMPLE AND BUY

Visit the product page to see pricing options.

TECHNICAL SUPPORT

Submit a technical question or find your regional support number.

DOCUMENT FEEDBACK

Submit feedback for this data sheet.

TABLE OF CONTENTS

| | | | |
|--|---|---|----|
| Features | 1 | Interface Schematics | 6 |
| Applications..... | 1 | Typical Performance Characteristics | 7 |
| Functional Block Diagram | 1 | Theory of Operation | 9 |
| General Description | 1 | Applications Information | 10 |
| Revision History | 2 | Biasing Procedures..... | 10 |
| Specifications..... | 3 | Evaluation PCB..... | 11 |
| Electrical Specifications..... | 3 | Outline Dimensions | 13 |
| Absolute Maximum Ratings..... | 4 | Ordering Guide | 13 |
| ESD Caution..... | 4 | | |
| Pin Configuration and Function Descriptions..... | 5 | | |

REVISION HISTORY

9/15—Rev. 03.0111 to Rev. D

This Hittite Microwave Products data sheet has been reformatted to meet the styles and standards of Analog Devices, Inc.

| | |
|---|----|
| Changes to Features Section and General Description Section | 1 |
| Changes to Table 1..... | 3 |
| Added Table 2; Renumbered Sequentially | 3 |
| Changes to Table 3..... | 4 |
| Changes to Table 4..... | 5 |
| Added Figure 3, Figure 4, Figure 5, Figure 6, and Figure 7; Renumbered Sequentially..... | 6 |
| Added Theory of Operation Section and Figure 19 | 9 |
| Added Applications Information Section, Figure 20, and Biasing Procedures Section | 10 |
| Changes to Table 5..... | 11 |
| Changes to Ordering Guide | 13 |

SPECIFICATIONS

ELECTRICAL SPECIFICATIONS

$T_A = 25^\circ\text{C}$, $V_{DD} = 5\text{ V}$, $I_{DD} = 55\text{ mA}$.

Table 1.

| Parameter | Min | Typ | Max | Unit | Test Conditions/Comments |
|--|-----|-------|-----|-------|--|
| FREQUENCY RANGE | 1 | | 6 | GHz | |
| PERFORMANCE | | | | | |
| Gain | 14 | 16.5 | | dB | |
| Gain Variation over Temperature | | 0.004 | | dB/°C | |
| Noise Figure | | 1.5 | 2 | dB | |
| Input Return Loss | | 11 | | dB | |
| Output Return Loss | | 18 | | dB | |
| Output Power for 1 dB Compression (P1dB) | | 18 | | dBm | |
| Saturated Output Power (P_{SAT}) | | 20 | | dBm | |
| Output Third Order Intercept (IP3) | | 30 | | dBm | |
| POWER SUPPLY | | | | | |
| Supply Current (I_{DD}) | | 55 | | mA | $V_{DD} = 5\text{ V}$, set $V_{GG2} = 1.5\text{ V}$, $V_{GG1} = -0.8\text{ V}$ typical |

Table 2.

| Parameter | Min | Typ | Max | Unit | Test Conditions/Comments |
|--|-----|-------|-----|-------|--|
| FREQUENCY RANGE | 6 | | 11 | GHz | |
| PERFORMANCE | | | | | |
| Gain | 10 | 14 | | dB | |
| Gain Variation over Temperature | | 0.008 | | dB/°C | |
| Noise Figure | | 2 | 2.7 | dB | |
| Input Return Loss | | 8 | | dB | |
| Output Return Loss | | 12 | | dB | |
| Output Power for 1 dB Compression (P1dB) | | 15 | | dBm | |
| Saturated Output Power (P_{SAT}) | | 17 | | dBm | |
| Output Third Order Intercept (IP3) | | 28 | | dBm | |
| POWER SUPPLY | | | | | |
| Supply Current (I_{DD}) | | 55 | | mA | $V_{DD} = 5\text{ V}$, set $V_{GG2} = 1.5\text{ V}$, $V_{GG1} = -0.8\text{ V}$ typical |

ABSOLUTE MAXIMUM RATINGS

Table 3.

| Parameter | Rating |
|--|--------------------------|
| Drain Bias Voltage | 6.0 V |
| RF Input Power | 12 dBm |
| Gate Bias Voltage | |
| V_{GG1} | -1 V to +0.3 V |
| V_{GG2} | 0 V to 2.5 V |
| Channel Temperature | 180°C |
| Continuous P_{DISS} ($T_A = 85^\circ\text{C}$), Derate 8.4 mW/°C Above 85°C | 0.8 W |
| Thermal Resistance (Channel to Die Bottom) | 119°C/W |
| Storage Temperature Range | -65°C to +150°C |
| Operating Temperature Range | -40°C to +85°C |
| ESD Sensitivity | |
| Human Body Model (HBM) | Class 0, Passed 100 V |

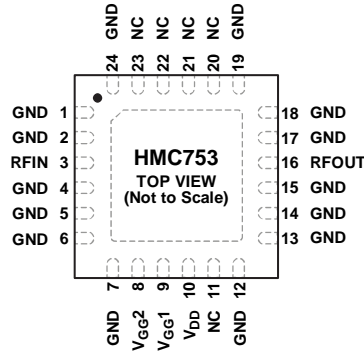
Stresses at or above those listed under Absolute Maximum Ratings may cause permanent damage to the product. This is a stress rating only; functional operation of the product at these or any other conditions above those indicated in the operational section of this specification is not implied. Operation beyond the maximum operating conditions for extended periods may affect product reliability.

ESD CAUTION



ESD (electrostatic discharge) sensitive device. Charged devices and circuit boards can discharge without detection. Although this product features patented or proprietary protection circuitry, damage may occur on devices subjected to high energy ESD. Therefore, proper ESD precautions should be taken to avoid performance degradation or loss of functionality.

PIN CONFIGURATION AND FUNCTION DESCRIPTIONS



- NOTES**
1. NC = NOT CONNECTED INTERNALLY. THESE PINS ARE NOT INTERNALLY CONNECTED; HOWEVER, ALL DATA SHOWN IS MEASURED WITH THESE PINS CONNECTED EXTERNALLY TO RF/DC GROUND.
 2. EXPOSED PAD. THE EXPOSED PAD MUST BE CONNECTED TO RF/DC GROUND.

13494-002

Figure 2. Pin Configuration

Table 4. Pin Function Descriptions

| Pin No. | Mnemonic | Description |
|--------------------------------------|-------------------------------------|--|
| 1, 2, 4 to 7, 12 to 15, 17 to 19, 24 | GND | Ground. The package bottom has an exposed metal pad that must be connected to RF/dc ground. |
| 3 | RFIN | RF Input. This pad is ac-coupled and matched to 50 Ω. |
| 8, 9 | V _{GG2} , V _{GG1} | Gate Control for the Amplifier. Follow the biasing procedures described in the Biasing Procedure section. See Figure 22 for required external components. |
| 10 | V _{DD} | Power Supply Voltage for the Amplifier. See Figure 22 for required external components. |
| 11, 20 to 23 | NC | Not Internally Connected. These pins are not internally connected; however, all data shown is measured with these pins connected externally to RF/dc ground. |
| 16 | RFOUT | RF Output. This pad is ac-coupled and matched to 50 Ω. |
| | EPAD | Exposed Pad. The exposed pad must be connected to RF/dc ground. |

INTERFACE SCHEMATICS



Figure 3. GND Interface

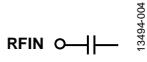


Figure 4. RFIN Interface

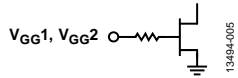


Figure 5. VGG1, VGG2 Interface

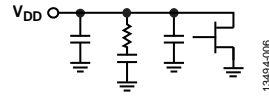


Figure 6. VDD Interface

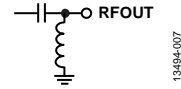


Figure 7. RFOUT Interface

TYPICAL PERFORMANCE CHARACTERISTICS

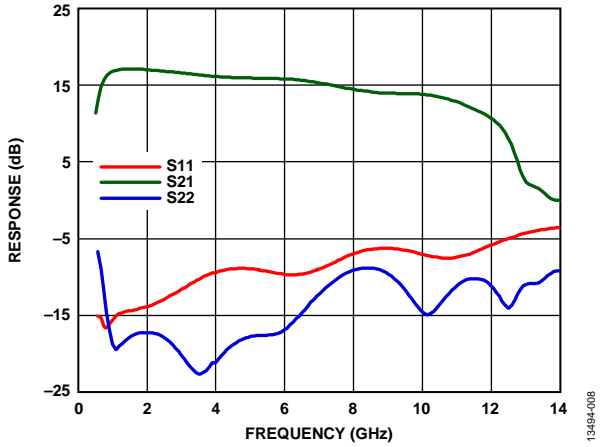


Figure 8. Broadband Gain and Return Loss (Board Loss Subtracted out for Gain, Power, and Noise Figure Measurements)

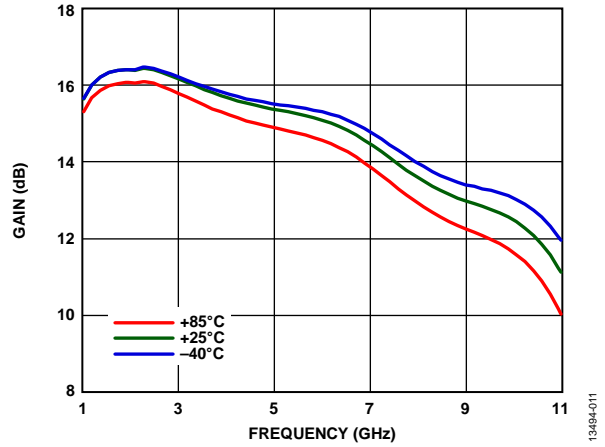


Figure 11. Gain vs. Frequency for Various Temperatures (Board Loss Subtracted out for Gain, Power, and Noise Figure Measurements)

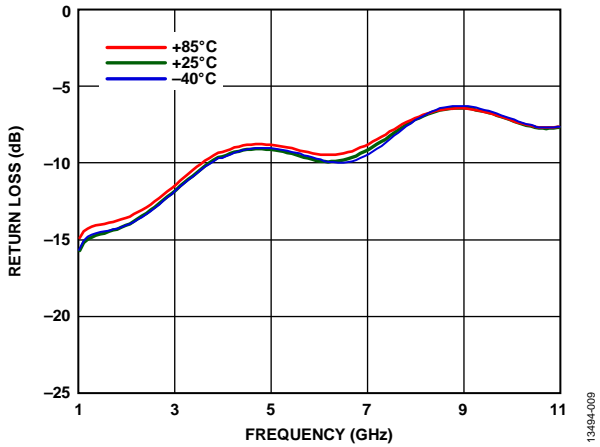


Figure 9. Input Return Loss vs. Frequency for Various Temperatures

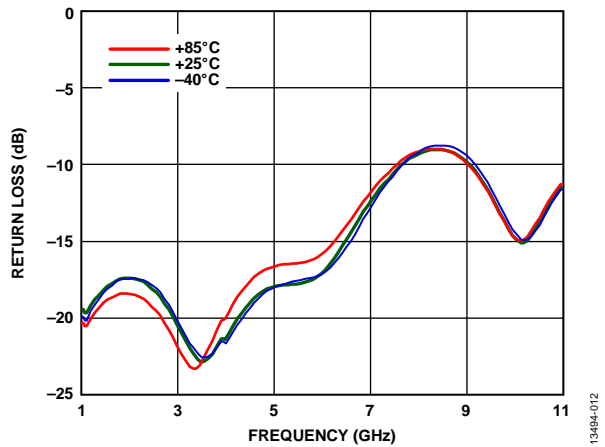


Figure 12. Output Return Loss vs. Frequency for Various Temperatures

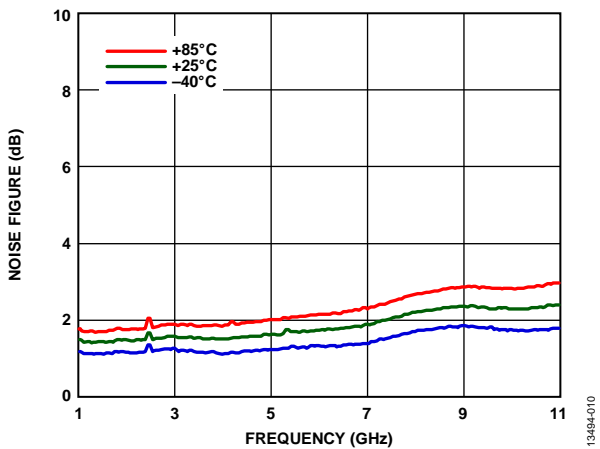


Figure 10. Noise Figure vs. Frequency for Various Temperatures (Board Loss Subtracted out for Gain, Power, and Noise Figure Measurements)

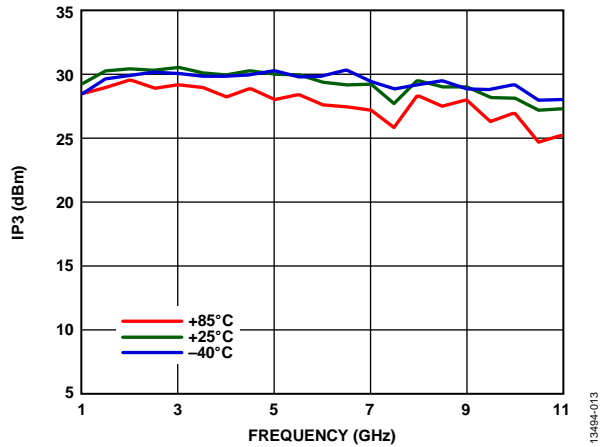


Figure 13. Output IP3 vs. Frequency for Various Temperatures

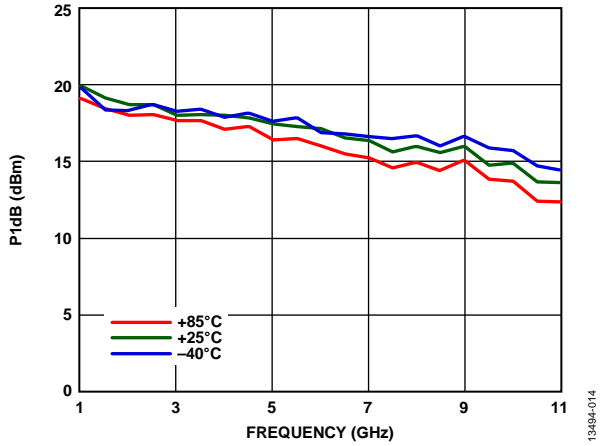


Figure 14. P1dB vs. Frequency for Various Temperatures (Board Loss Subtracted out for Gain, Power, and Noise Figure Measurements)

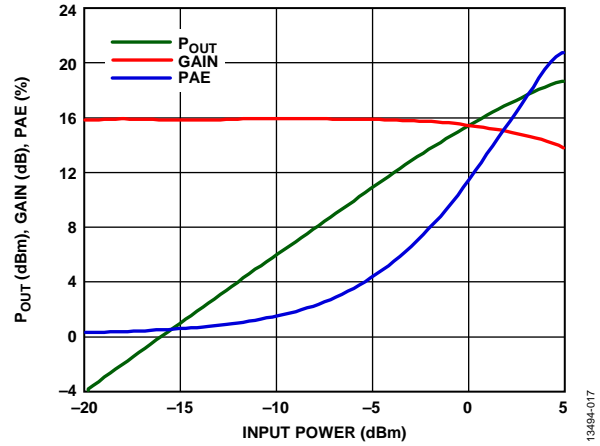


Figure 17. Power Compression at 6 GHz (Board Loss Subtracted out for Gain, Power, and Noise Figure Measurements)

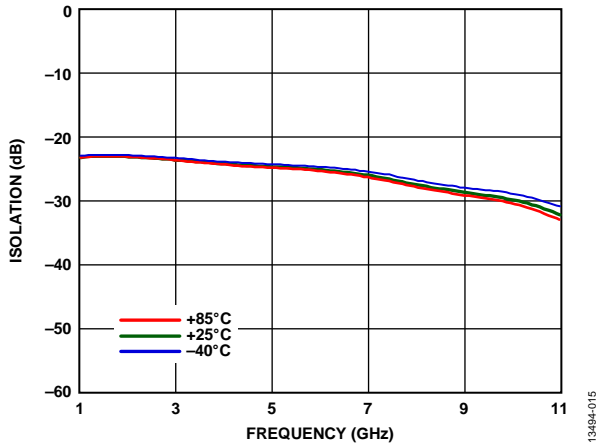


Figure 15. Reverse Isolation vs. Frequency for Various Temperatures

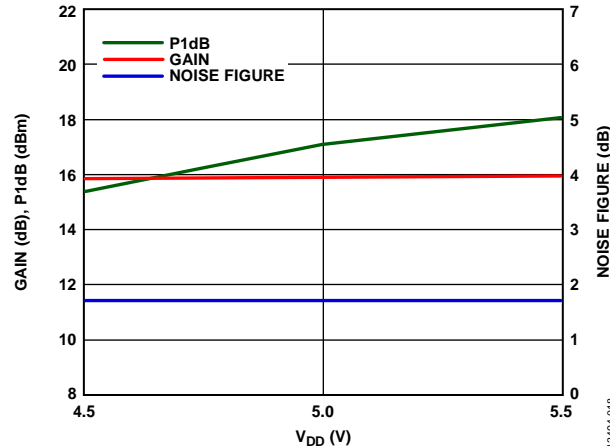


Figure 18. Gain, Noise Figure, and Power vs. Supply Voltage (V_{DD}) at 6 GHz (Board Loss Subtracted out for Gain, P1dB, and Noise Figure Measurements)

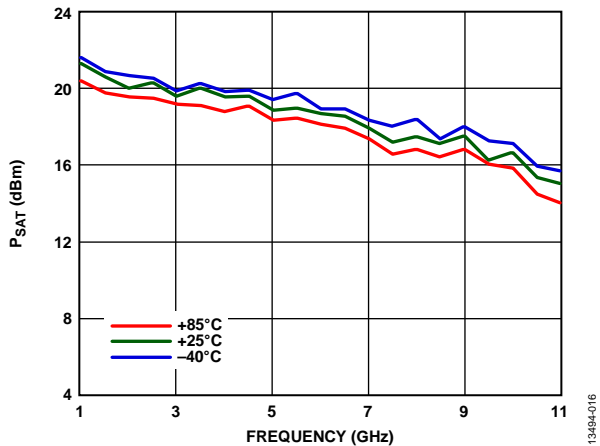


Figure 16. P_{SAT} vs. Frequency for Various Temperatures (Board Loss Subtracted out for Gain, Power, and Noise Figure Measurements)

THEORY OF OPERATION

The circuit architecture of the [HMC753](#) wideband, low noise amplifier is shown in Figure 19. The [HMC753](#) uses a single gain stage to form an amplifier with typical gain of 16.5 dB at 1 GHz to 6 GHz and 14 dB at the 6 GHz to 11 GHz frequency band.

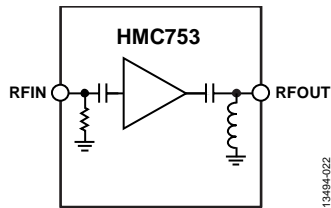


Figure 19. Wideband Low Noise Amplifier Circuit Architecture

The [HMC753](#) has single-ended input and output ports whose impedances are nominally equal to 50 Ω over the frequency range of 1 GHz to 11 GHz. Consequently, the [HMC753](#) can be directly inserted into a 50 Ω system with no impedance matching circuitry required. In addition, multiple [HMC753](#) amplifiers can be cascaded back to back without the need of external matching circuitry.

The input and output impedances are sufficiently stable over variations in temperature and supply voltage that no impedance matching compensation is required.

Both RF input and RF output ports have on-chip dc block capacitors, which eliminates the need for external ac coupling capacitors.

It is critical to supply very low inductance ground connections to the ground pins as well as to the backside exposed paddle. This ensures stable operation.

To achieve the best performance out of the [HMC753](#) and not to damage the device, the recommended biasing sequence must be followed; see the Applications Information section for further details.

APPLICATIONS INFORMATION

The [HMC753](#) is a GaAs, MMIC, high electron mobility transistor (HEMT), low noise, wideband amplifier.

The amplifier uses two field effect transistors (FETs) in series, source to drain. The basic schematic for a fundamental cell is shown in Figure 20.

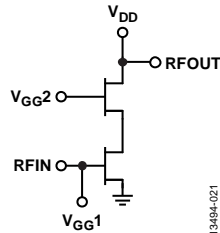


Figure 20. Fundamental Cell Schematic

All measurements for this device are taken using the evaluation printed circuit board (PCB) in its default configuration.

BIASING PROCEDURES

The recommended biasing procedure during power-up is as follows:

1. Connect GND.
2. Set V_{GG1} to -1 V.
3. Set V_{DD} to 5 V.
4. Set V_{GG2} to 1.5 V.
5. Increase V_{GG1} to achieve a typical quiescent current (I_{DQ}) = 55 mA.
6. Apply the RF signal.

The recommended biasing procedure during power-down is as follows:

1. Turn off the RF signal.
2. Decrease V_{GG1} to -1 V to achieve $I_{DQ} = 0$ mA.
3. Decrease V_{GG2} to 0 V.
4. Decrease V_{DD} to 0 V.
5. Increase V_{GG1} to 0 V.

The $V_{DD} = 5$ V and $I_{DQ} = 55$ mA bias conditions are the operating points recommended to optimize the overall performance. Unless otherwise noted, the data shown is taken using the recommended bias conditions. Operation of the [HMC753](#) at different bias conditions may result in performance that differs from the Typical Performance Characteristics shown in the data sheet. Biasing the [HMC753](#) for higher drain current typically results in higher P1dB and output IP3 at the expense of increased power consumption.

EVALUATION PCB

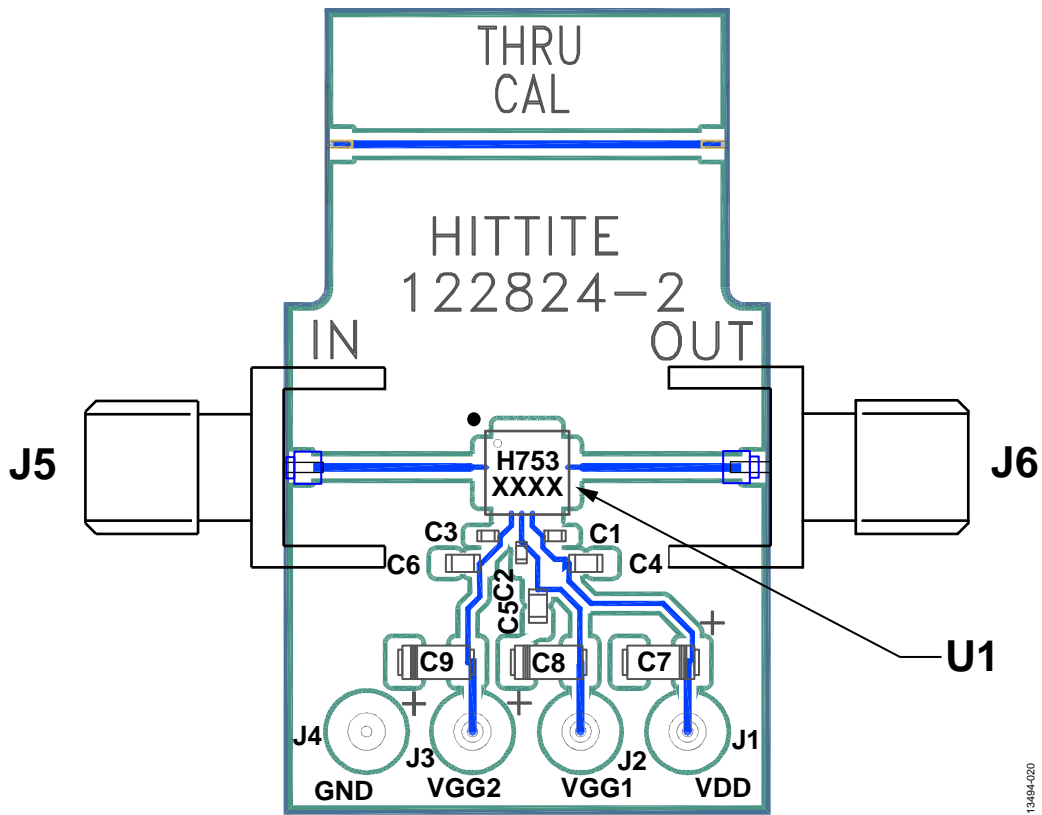


Figure 21. 122826-HMC753LP4E Evaluation PCB

13494-020

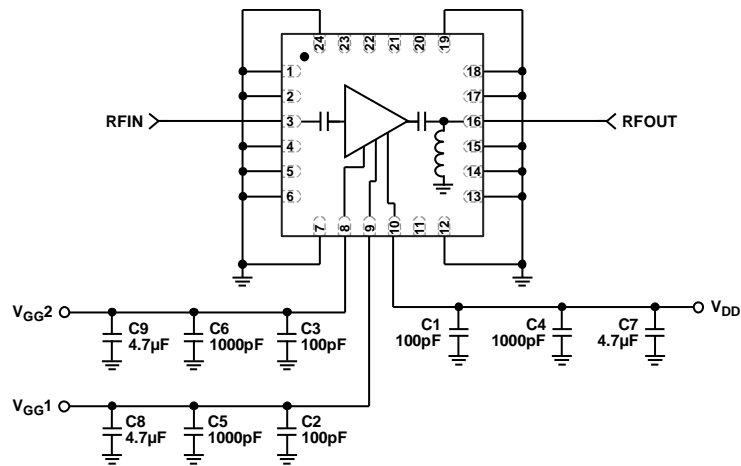


Figure 22. Typical Application Circuit

13494-019

**Table 5. List of Materials for Evaluation PCB
122826-HMC753LP4E¹**

| Item | Description |
|------------------|------------------------------------|
| J5, J6 | SMA connectors |
| J1 to J4 | DC pins |
| C1 to C3 | 100 pF capacitors, 0402 package |
| C4 to C6 | 10,000 pF capacitors, 0603 package |
| C7 to C9 | 4.7 μ F capacitors, tantalum |
| U1 | HMC753 amplifier |
| PCB ² | 122824-2 evaluation PCB |

¹ Reference this number when ordering the complete evaluation PCB.² Circuit board material: Rogers 4350 or Arlon 25FR.

It is recommended that the circuit board used in this application use RF circuit design techniques. It is also recommended that signal lines have a 50 Ω impedance, and the package ground leads and exposed pad be connected directly to the ground plane, as shown in Figure 22. Use a sufficient number of via holes to connect the top and bottom ground planes. Mount the evaluation board to an appropriate heat sink. The evaluation circuit board shown is available from Analog Devices, Inc., upon request.

OUTLINE DIMENSIONS

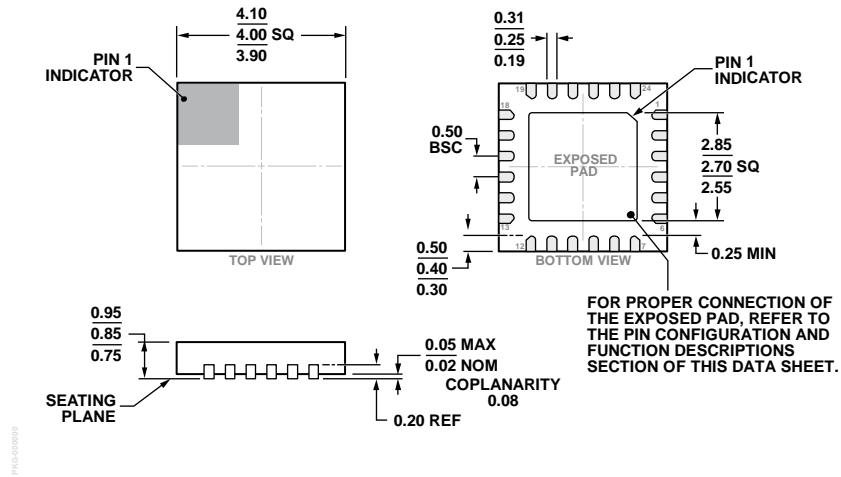


Figure 23. 24-Lead Lead Frame Chip Scale Package [LFCSP_VQ]
 4 mm x 4 mm Body, Very Thin Quad
 (HCP-24-3)
 Dimensions shown in millimeters

ORDERING GUIDE

| Model | Package Description | Package Option | Package Marking ¹ |
|-------------------|--|----------------|------------------------------|
| HMC753LP4E | 24-Lead Lead Frame Chip Scale Package [LFCSP_VQ] | HCP-24-3 | 753 XXXX |
| HMC753LP4ETR | 24-Lead Lead Frame Chip Scale Package [LFCSP_VQ] | HCP-24-3 | 753 XXXX |
| 122826-HMC753LP4E | Evaluation Board | | |

¹ XXXX is the 4 digit lot number.