

PLEASE CHECK WWW.MOLEX.COM FOR LATEST PART INFORMATION

Part Number: [15-97-6161](#)
Status: **Active**
Overview: Mini-Fit® TPA Plugs and Receptacles
Description: 4.20mm Pitch Mini-Fit® TPA Plug Housing, Dual Row with Secondary Terminal Retention, 16 Circuits

Documents:

[3D Model](#) [Product Specification PS-5556-003 \(PDF\)](#)
[Drawing \(PDF\)](#) [RoHS Certificate of Compliance \(PDF\)](#)

Agency Certification

CSA LR19980
 UL E29179

General

Product Family Crimp Housings
 Series [30068](#)
 Application Power, Wire-to-Wire
 Comments Current = 13A max. per circuit when header is mated to a receptacle loaded with [45750](#) series terminals crimped to 16 AWG wire. . See Molex product specification PS-45750-001 for additional current derating information.
 Overview [Mini-Fit® TPA Plugs and Receptacles](#)
 Product Name Mini-Fit® TPA
 UPC 800754202541

Physical

Circuits (maximum) 16
 Color - Resin Black
 Flammability 94V-0
 Gender Male
 Glow-Wire Compliant No
 Material - Resin Polyester
 Net Weight 5.762/g
 Number of Rows 2
 Packaging Type Bag
 Panel Mount No, Yes
 Pitch - Mating Interface 4.20mm
 Stackable No
 Temperature Range - Operating -40°C to +105°C

Electrical

Current - Maximum per Contact 13A

Material Info

Old Part Number 30068-16

Reference - Drawing Numbers

Product Specification PS-5556-003
 Sales Drawing SD-30068-*

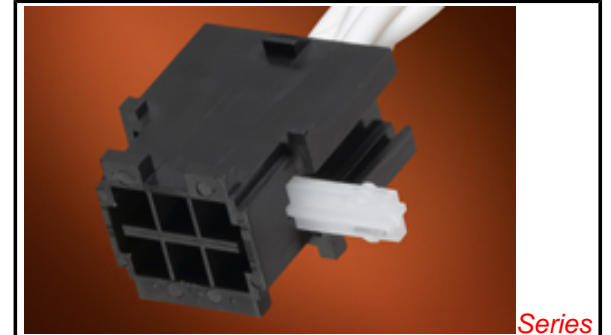


image - Reference only

Series

EU RoHS

ELV and RoHS Compliant

REACH SVHC

Not Reviewed

Low-Halogen Status

Not Low-Halogen

China RoHS



Need more information on product environmental compliance?

Email productcompliance@molex.com
 For a multiple part number RoHS Certificate of Compliance, [click here](#)

Please visit the [Contact Us](#) section for any non-product compliance questions.

Search Parts in this Series

[30068Series](#)

Mates With

[30068](#) Plug Housing, [30069](#) Header, [30070](#) Right Angle Header, [44473](#) Right Angle Header

Use With

[30072](#) Mini-Fit® TPA Key