

## Flush-type connector - SACC-DSIV-M12FSB-5CON-L180 - 1515934

Please be informed that the data shown in this PDF Document is generated from our Online Catalog. Please find the complete data in the user's documentation. Our General Terms of Use for Downloads are valid (<http://download.phoenixcontact.com>)



Sensor/Actuator flush-type socket, 5-pos., M12, B-coded, rear/screw mounting with M12 thread, with straight solder connection



### Key commercial data

Packing unit	1 1
Minimum order quantity	10 1
Weight per Piece (excluding packing)	14.8 GRM
Custom tariff number	85366990
Country of origin	Germany

### Technical data

Product type	Circular connectors (device side)
Approval	GOST
	GOST
Number of positions	5
Coding	B - inverse
Design	Flush-type socket, straight
Mounting type	Rear mounting
Rated current (IEC)	4
Rated voltage (IEC)	125
Thread	M12
Shielding	No
Signal type	Universal

# Flush-type connector - SACC-DSIV-M12FSB-5CON-L180 - 1515934

## Classifications

### eCl@ss

eCl@ss 4.0	27140815
eCl@ss 4.1	27140815
eCl@ss 5.0	27143423
eCl@ss 5.1	27143423
eCl@ss 6.0	27143423
eCl@ss 7.0	27449001
eCl@ss 8.0	27449001

### ETIM

ETIM 2.0	EC001297
ETIM 3.0	EC002061
ETIM 4.0	EC002061
ETIM 5.0	EC002061

### UNSPSC

UNSPSC 6.01	31251501
UNSPSC 7.0901	31251501
UNSPSC 11	31251501
UNSPSC 12.01	31251501
UNSPSC 13.2	31251501

## Approvals

### Approvals

---

Approvals

GOST / GOST

---

Ex Approvals

---

Approvals submitted

---

Approval details

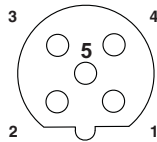
# Flush-type connector - SACC-DSIV-M12FSB-5CON-L180 - 1515934

## Approvals



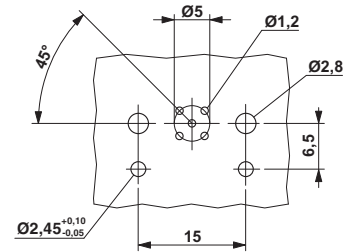
## Drawings

Schematic diagram



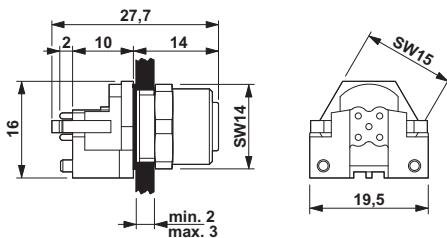
Pin assignment M12 socket, 5-pos., B-coded, female side

Drilling diagram



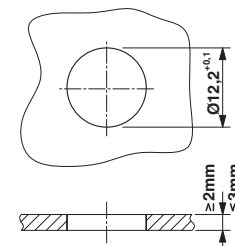
M12 flush-type connector

Dimensioned drawing



M12 flush-type connector

Dimensioned drawing



Panel cutout