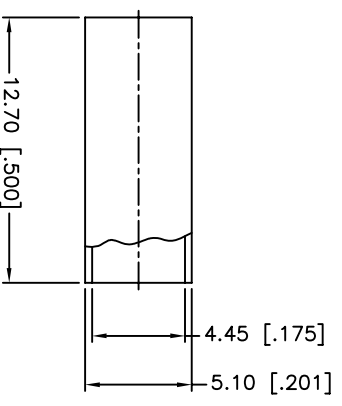
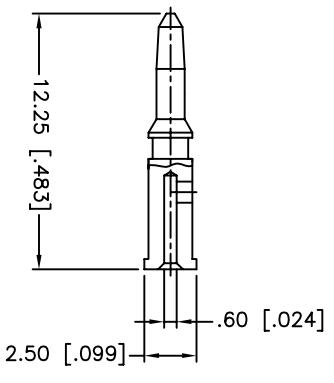
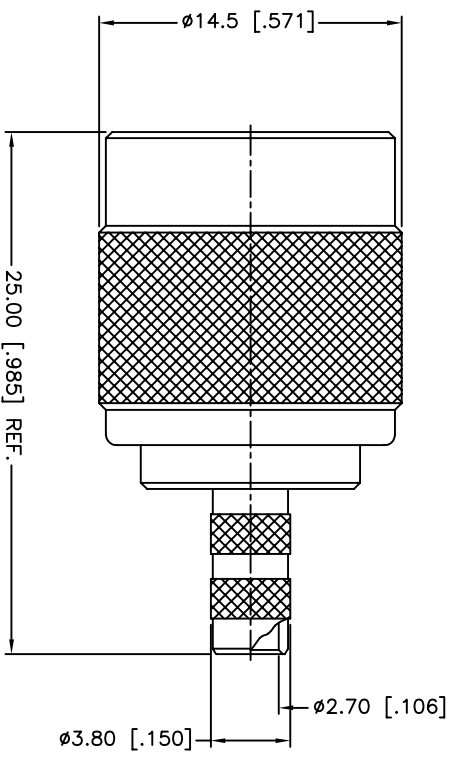
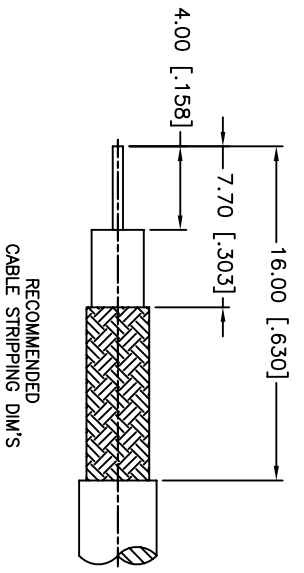


REV.	DATE	ECR NO.	DESCRIPTION
NC	08/20/09	XXXXXX	INITIAL RELEASE



1. CRIMPED FERRULE
HEX CRIMP SIZE .178"
2. CRIMPED CONTACT PIN
HEX CRIMP SIZE .068"

QTY	FINISH	MATERIAL	DESCRIPTION
1	NICKEL	COPPER	FERRULE
1	NICKEL	BRASS	WASHER
1	NATURAL	DELTRIN	RING
1	NICKEL	BRASS	RETAINER RING
1	RED	RUBBER	GASKET
1	GOLD	BRASS	CONTACT PIN
1	NATURAL	DELTRIN	INSULATOR
1	NICKEL	BRASS	BODY
1	NICKEL	BRASS	SHELL
1			DESCRIPTION

UNLESS OTHERWISE SPECIFIED DIMENSIONS ARE IN INCHES AND FOR CUSTOMER REFERENCE ONLY.	UNLESS OTHERWISE SPECIFIED DIMENSIONS ARE IN MILLIMETERS AND FOR CUSTOMER REFERENCE ONLY.
TOLERANCES FOR MILLIMETERS ARE:	TOLERANCES FOR INCHES ARE:
0.5 - 8mm ± 0.20mm	.020 - .315 = ± 0.007"
8 - 30mm ± 0.40mm	.315 - 1.180 = ± 0.015"
30 - 120mm ± 0.50mm	1.180 - 4.724 = ± 0.020"

APPROVALS	DATE
C. WANG	08/20/09

DO NOT SCALE DRAWING
DO NOT SCALE DRAWING

APPROVALS	DATE
C. WANG	08/20/09

DESCRIPTION	PART NO.
TNC CRIMP PLUG (FOR BELDEN 1865A, 8218, B1417B, B164B, RG-B809)	122457

APPROVALS	DATE
C. WANG	08/20/09

DESCRIPTION	PART NO.
TNC CRIMP PLUG (FOR BELDEN 1865A, 8218, B1417B, B164B, RG-B809)	122457

APPROVALS	DATE
C. WANG	08/20/09

DESCRIPTION	PART NO.
TNC CRIMP PLUG (FOR BELDEN 1865A, 8218, B1417B, B164B, RG-B809)	122457

Amphenol Connex

TNC CRIMP PLUG (FOR BELDEN 1865A, 8218, B1417B, B164B, RG-B809)

122457

C:\CONNEX\122457.DWG