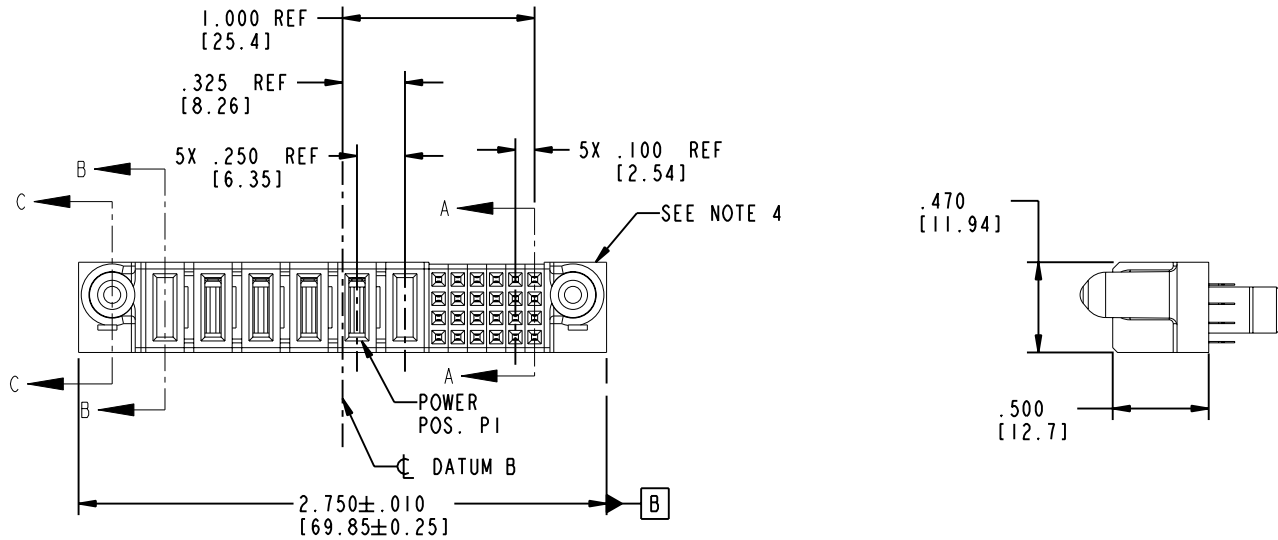
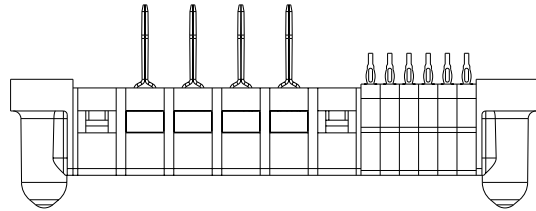


Tous droits strictement réservés. Reproduction ou communication a des tiers interdite sous quelque forme que ce soit sans autorisation écrite du propriétaire. Propriété de c FCI. Droits de reproduction FCI.

FCI

All rights strictly reserved. Reproduction or issue to third parties in any form whenever is not permitted without written authority from the proprietor. Property of FCI. Copyright FCI.

PRODUCT NO. 51929-002- NOTE ③	ROWS D C B A	POWER						SIGNAL					E1								
		E2	P6	P5	P4	P3	P2	P1	6	5	4	3		2	1						
			X	PG	PG	PG	PG	X	F	F	F	F	F	F	F	F	F	F	F	F	



CODE	DIM "M" MATING LENGTH	CONTACT TYPE
PG	.042 [1.07]	POWER
F	N/A [N/A]	SIGNAL
X	OMITTED	OMITTED

mat'l code				SEE NOTE 2		tolerances unless otherwise specified		CUSTOMER		FCI www.fciconnect.com	
ltr	ecn no.	dr	date	linear	.XX ± .01/0.X ± 0.3	projection	COPY		title		
A	DG06-0026	SW	01/19/06	angles	.XXX ± .005/0.XX ± 0.13		INCH/MM		24S + 6P		
				dr	STEVEN WANG 01/19/06	scale	1:1		VERTICAL PF RECEPT		
				enrg	STEVEN WANG 01/19/06	product family	PwrBlade		code		
				chr	BEER FU 01/19/06	size	A		213		
				appd	JOSEPH HSIA 01/19/06	dwg no	51929-002		sheet		
sheet index	revision sheet	A	A	A	A	1 of 4		cage code			
1	2	3	4			22526		4			

Pro/E

cage code 22526

PDM: Rev:A

STATUS: Released

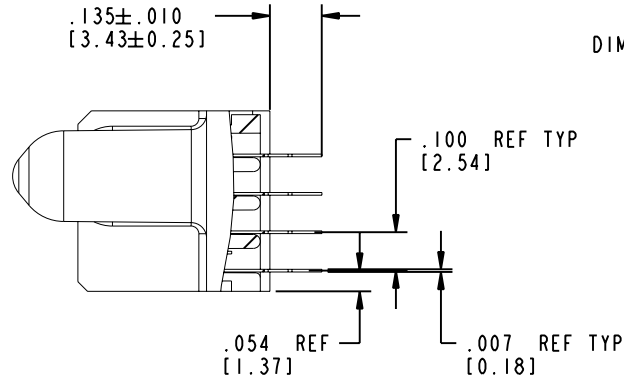
Printed: Dec 20, 2010

Tous droits strictement reserves. Reproduction ou communication a des tiers interdite sous quelque forme que ce soit sans autorisation écrite du propriétaire. Propriete de c FCI. Droits de reproduction FCI.

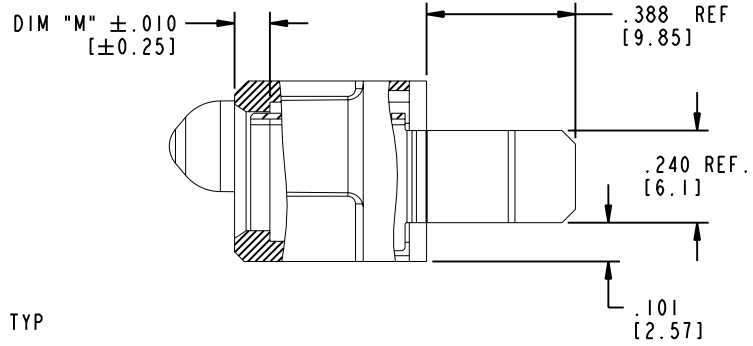
All rights strictly reserved. Reproduction or issue to third parties in any form whatever is not permitted without written authority from the proprietor. Property of FCI. Copyright FCI.

PRODUCT NUMBER

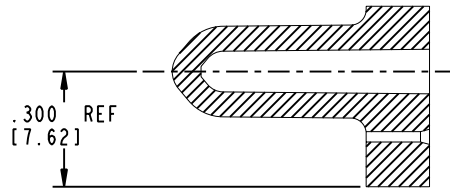
51929-002...
NOTE ③



SECTION A-A
SCALE 2:1



SECTION B-B
SCALE 2:1



SECTION C-C
SCALE 2:1

mat'l code				SEE NOTE 2		tolerances unless otherwise specified		CUSTOMER		 www.fciconnect.com	
ltr	ecn no.	dr	date	linear	.XX ± .01/0.X ± 0.3	projection	COPY		title		
A				angles	.XXX ± .005/0.XX ± 0.13	 INCH/MM	24S + 6P		VERTICAL PF RECEIPT		
				dr	.XXX ± .0020/0.XXX ± 0.051		product family		PwrBlade		code
				enr	0° ± 2°	size		dwg no		213	
				chr	STEVEN WANG 01/19/06	scale		A 51929-002		sheet	
				appd	STEVEN WANG 01/19/06	1:1				2 of 4	
					BEER FU 01/19/06						
					JOSEPH HSIA 01/19/06						
sheet index	revision sheet										

Pro/E

cage code 22526

PDM: Rev:A

STATUS: Released

Printed: Dec 20, 2010

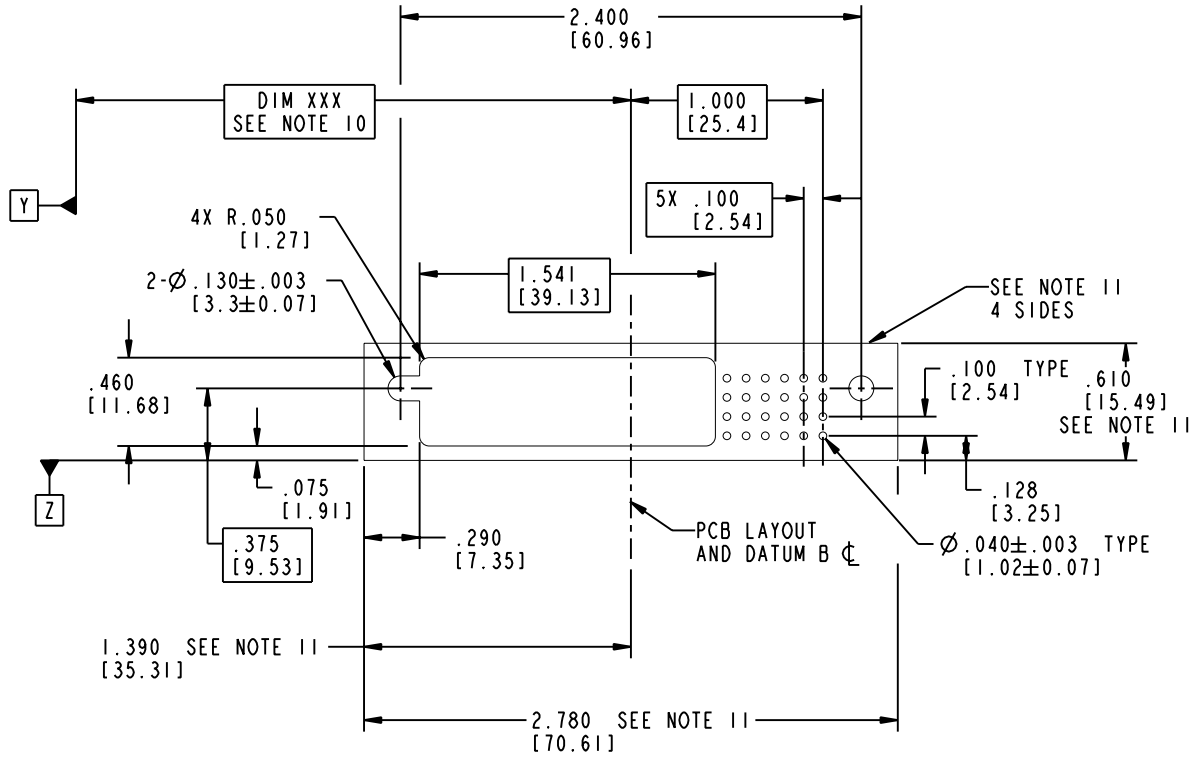
Tous droits strictement réservés. Reproduction ou communication a des tiers interdite sous quelque forme que ce soit sans autorisation écrite du propriétaire. Propriété de c FCI. Droits de reproduction FCI.


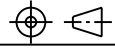
A
FCI

All rights strictly reserved. Reproduction or issue to third parties in any form whatever is not permitted without written authority from the proprietor. Property of FCI. Copyright FCI.

PRODUCT NUMBER

51929-002..
NOTE ③



mat'l code				SEE NOTE 2		tolerances unless otherwise specified		CUSTOMER		 www.fciconnect.com	
ltr	ecn no.	dr	date	linear	.XX±.01/0.XX±0.3	projection	COPY		title		
A				angles	.XXX±.005/0.XX±0.13				24S + 6P VERTICAL PF RECEPT		
				dr	.XXX±.0020/0.XX±0.051	INCH/MM	product family		code		
				enr	0°±2°	scale	PwrBlade		213		
				chr	STEVEN WANG 01/19/06	1:1	size		sheet		
				appd	STEVEN WANG 01/19/06		A		3 of 4		
					BEER FU 01/19/06		51929-002				
					JOSEPH HSIA 01/19/06						
sheet index	revision sheet										

Pro/E

cage code **22526**

PDM: Rev:A

STATUS: **Released**

Printed: Dec 20, 2010

Tous droits strictement réservés. Reproduction ou communication a des tiers interdite sous quelque forme que ce soit sans autorisation écrite du propriétaire. Propriété de c FCI. Droits de reproduction FCI.

A
FCI

All rights strictly reserved. Reproduction or issue to third parties in any form whatever is not permitted without written authority from the proprietor. Property of FCI. Copyright FCI.

B

PRODUCT NUMBER

51929-002
NOTE ③

NOTES:

1. DIMENSIONS AND TOLERANCES ARE IN ACCORDANCE WITH ASME Y14.5M, 1994 UNLESS OTHERWISE SPECIFIED.

CONNECTOR NOTES:

② HOUSING MATERIAL: UL 94 V-0 GLASS FILLED
HIGH-TEMP THERMOPLASTIC
POWER CONTACT MATERIAL: COPPER ALLOY
SIGNAL PIN MATERIAL: COPPER ALLOY

3. PLATING:
51925-003, 51925-003LF PLATING SPEC. WAS SHOWN IN THE PRINT OF 10064183.

④ NO PRINTING HERE.
THIS SURFACE.

5. PRODUCT SPECIFICATION GS-12-149.
APPLICATION SPECIFICATION BUS-20-067.
6. PACKAGED IN TRAYS.

PCB NOTES:


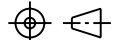
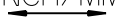
7. ALL HOLE DIAMETERS ARE FINISHED HOLE SIZE.

⑧ MOUNTING HOLES, WHERE APPLICABLE, ARE UNPLATED.

⑨ RECOMMENDED RETENTION TO PCB
Ø.13[3.3] THRU HOLE FOR #5 SOCKET HEAD CAP SCREW
MAX. HEAD .205[5.21] RECOMMENDED SCREW LENGTH 12mm [.472] + PCB THICKNESS
RECOMMENDED SCREW SEATING TO PCB TORQUE: 2-5 lbf - in (2300-5760 gf-cm).

⑩ "DIM XXX" TO BE DETERMINED BY THE CUSTOMER.

⑪ CONNECTOR KEEP-OUT ZONE.

mat'l code		SEE NOTE 2		tolerances unless otherwise specified		CUSTOMER		 www.fciconnect.com	
ltr	ecn no.	dr	date	linear	.XX±.01/0.XX±0.3	COPY		title	
A				linear	.XXX±.005/0.XX±0.13	projection		24S + 6P	
				angles	.XXX±.0020/0.XX±0.051			VERTICAL PF RECEPT	
				dr	STEVEN WANG 01/19/06	INCH/MM		product family	
				enr	STEVEN WANG 01/19/06			PwrBlade	
				chr	BEER FU 01/19/06	scale		code	
				appd	JOSEPH HSIA 01/19/06	1:1		213	
sheet index		revision sheet						sheet	
								4 of 4	

Pro/E

cage code **22526**

PDM: Rev:A

STATUS: **Released**

Printed: Dec 20, 2010