

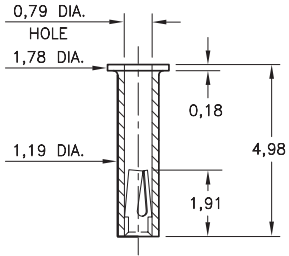
# PIN RECEPTACLES

FOR 0,38 - 0,56 DIAMETER PINS

## 6561

6561-0-15-XX-05-XX-10-0

Solder mount in 1,3 min. mounting hole



<p>6561 6561-0-15-XX-05-XX-10-0 Solder mount in 1,3 min. mounting hole</p>			

### SPECIFICATIONS:

**Shell Material:** Brass Alloy 360, 1/2 Hard

**Contact Material:** Beryllium Copper Alloy 172, HT

**Dimensions:** Millimeters

**Tolerances On:** Lengths:  $\pm 0,13$

Diameters:  $\pm 0,051$

Angles:  $\pm 2^\circ$



**ORDER CODE:** XXXX - X - XX - XX - 05 - XX - 10 - 0

**BASIC PART #**

**SPECIFY SHELL FINISH:**

**01** 5,08 $\mu$ m TIN/LEAD OVER NICKEL

◆ **80** 5,08 $\mu$ m TIN OVER NICKEL (RoHS)

◆ **15** 0,25 $\mu$ m GOLD OVER NICKEL (RoHS)

**SPECIFY CONTACT FINISH:**

**02** 2,54 $\mu$ m TIN/LEAD OVER NICKEL

◆ **84** 2,54 $\mu$ m TIN OVER NICKEL (RoHS)

◆ **27** 0,76 $\mu$ m GOLD OVER NICKEL (RoHS)

**SELECT CONTACT:**

**#05** CONTACT (DATA ON PAGE 251)

(For alternate contact choices, see group A on page 248)