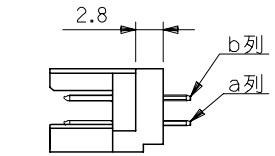
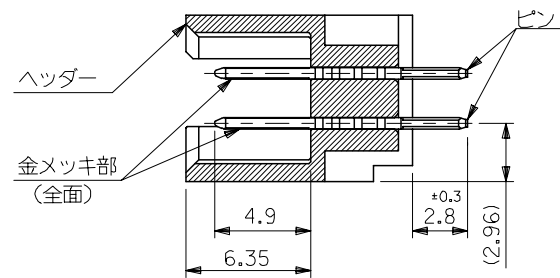
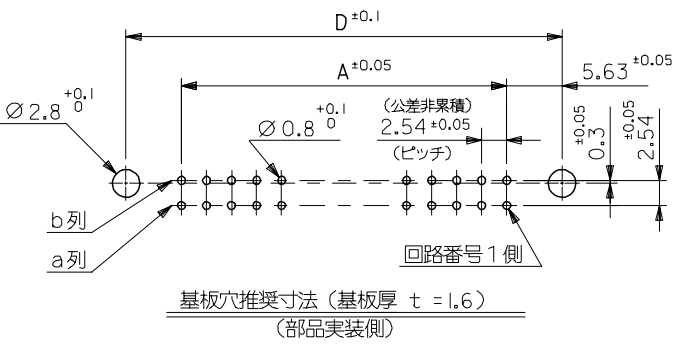
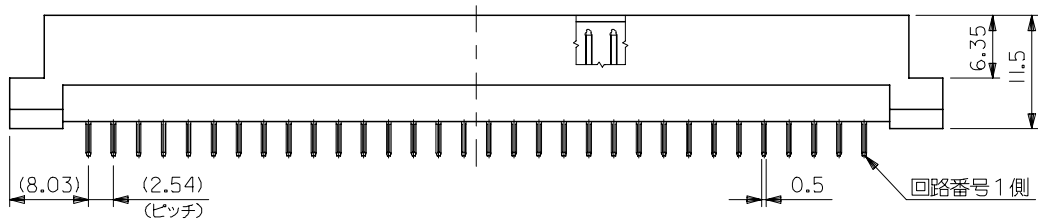
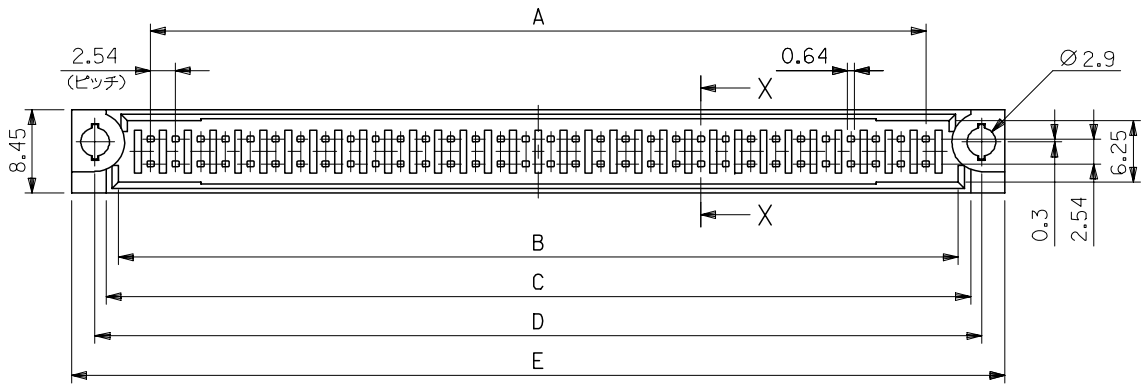
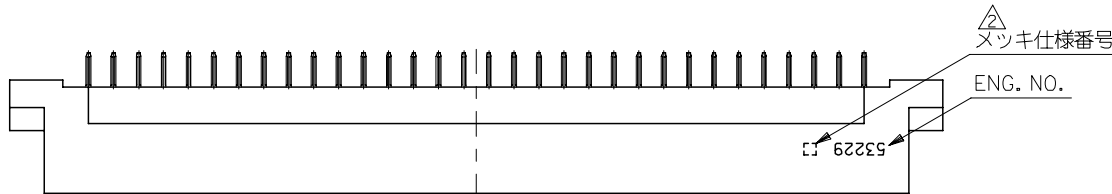


10 9 8 7 6 5 4 3 2 1



注記

- 材質
ヘッダー : ガラス入り P.B.T. (白色), UL94V-0
ピン : 黄銅 (t=0.58)
- メッキ仕様及び仕様番号
- 本製品は 53229-**** の鉛フリー品である。
THIS PRODUCT IS LEAD FREE OF 53229-****

53229-***6	0.76	1.0	1.0	6
53229-***7	0.5			7
53229-***8	0.3			8
53229-***9	0.1			9
MODEL. NO.	接点部 金メッキ [µm 以上]	半田付け部 錫メッキ [µm 以上]	下地メッキ ニッケルメッキ [µm 以上]	メッキ 仕様番号

3. 嵌合相手: 52299, 52385, 52479, 52482 シリーズ

94.8	90	87.8	85.3	78.74	53229-064*	64
77.02	72.22	70.02	67.52	60.96	↑ -050*	50
69.4	64.6	62.4	59.9	53.34	-044*	44
54.16	49.36	47.16	44.66	38.1	↓ -032*	32
38.92	34.12	31.92	29.42	22.86	-020*	20
33.84	29.04	26.84	24.34	17.78	53229-016*	16
E	D	C	B	A	MATERIAL. NO.	極致

REVISED EC NO: J2007-2224 DR: WRT/SURUOKA 2007/03/12 CHK: K/TOYODA 2007/03/13 APPR: NUKITA 2007/03/15	GENERAL TOLERANCES (UNLESS SPECIFIED)		DIMENSION STYLE MM ONLY		SCALE ---	DESIGN UNITS METRIC	THIRD ANGLE PROJECTION
	10 UNDER	± 0.2	DRAWN BY DATE HSHIMABUKURO '04/03/26		TITLE 2.54 B TO B CONN HEADER ASSY (DUAL ROW) -LEAD FREE-		
	10 OVER 30 UNDER	± 0.25	CHECKED BY DATE KTOJO '04/03/26		MOLEX INCORPORATED		
	30 OVER	± 0.3	APPROVED BY DATE KTOJO '04/03/26		DOCUMENT NO. SD-53229-001		
A	ANGULAR	± 3 °	MATERIAL NO. SEE CHART		SHEET NO. 1 OF 1		
DRAFT WHERE APPLICABLE MUST REMAIN WITHIN DIMENSIONS		THIS DRAWING CONTAINS INFORMATION THAT IS PROPRIETARY TO MOLEX INCORPORATED AND SHOULD NOT BE USED WITHOUT WRITTEN PERMISSION					