

# **AT85RFD-07 Getting Started**

---

## **User Guide**





## Table of Contents

---

### Section 1

Introduction .....	1-1
1.1 Atmel Registration.....	1-1

---

### Section 2

Package Download .....	2-3
2.1 Web Site download .....	2-3
2.2 Nand Flash Download.....	2-3
2.3 Package Content .....	2-4

---

### Section 3

Tools Install.....	3-5
3.1 Requirement .....	3-5
3.2 In System Programming.....	3-5
3.2.1 MusicPlayerIsp .....	3-5
3.2.2 SUN JRE .....	3-8
3.3 USB Devices Installation.....	3-8
3.3.1 AT85C51SND3B ISP USB device.....	3-8



## Section 1

---

# Introduction

The AT85RFD-07 Starter Kit is designed to give designers a quick start to develop code on the AT85C51SND3Bx as well as for prototyping and testing of new designs.

---

### 1.1 Atmel Registration

In order to keep posted on any new information concerning the AT85C51SND3Bx products (new firmware delivery, new tool version, ...) register at the following address:

<http://support.norway.atmel.com/bin/customer>

As soon as you are registered, edit your preferences and 'check' the 8051 radio button in the e-mail notification section.



## Section 2

# Package Download

The Nand Flash memory of the AT85RFD-07 is delivered pre-programmed with the demo firmware and AT85C51SND3B documentation. Since the board is manufactured in large quantities, the package may be out of date. It is strongly recommended to download the latest version of the AT85C51SND3B package from our web site.

The following paragraphs explain how to retrieve the package from the web site or from the Nand Flash memory.

### 2.1 Web Site download

1. Connect to:  
<https://www.atmel-nantes.fr/.mp3/at85c51snd3b>  
User Name is: **atmelmp3**  
Password is: **snd3pass**
2. Copy the at85c51snd3b.zip file to your PC.
3. Unzip the package to your local hard drive.

### 2.2 Nand Flash Download

1. Connect the USB cable to the player and to a PC.  
The demonstration firmware starts and enters the mass-storage application:



A new USB device is installed and a removable disk is mounted in the explorer:



**Note:** The disk letter may differ.

The AT85RFD-07 disk corresponds to the on-board Nand Flash memory.

2. Open the AT85RFD-07 disk, its content is as follows:

Name	Size	Type
Atmel		File Folder
Update		File Folder
Sample.mp3	1,252 KB	MP3 Format Sound
Sample.wma	9,501 KB	Windows Media Audio file

The Atmel directory contains the AT85C51SND3B package.

The Update directory is the location where to place the update package for the automatic firmware upgrade feature (see firmware user’s guide).

3. Copy the Atmel directory to your local hard drive.

**2.3 Package Content** The package content is the following:

Atmel	
at85c51snd3b	..... Development kit package
at85dvk-07	..... Dev-kit user’s guides
Doc	..... Link to dev-kit firmware
Firmware	..... Hardware package
Hardware	..... Reference design package
at85rfd-07	..... Ref-dsn user’s guides
Doc	..... Link to ref-dsn firmware
Firmware	..... Hardware package
Hardware	..... Link to datasheet on Atmel web site
Datasheet	..... Firmware packages
Firmware	..... Firmware user’s guide & application notes
Doc	..... Development tools
Tools	..... Atmel font generator
Font Generator	..... Atmel in system programming
In System Programming	..... Atmel on-chip debug
On Chip Debug	.....OCD dongle recovery tool
Dongle	.....Flip tool for dongle upgrade
Flip	.....Keil debug drivers
Keil	..... Atmel screen generator
Screen Generator	..... USB mass-storage drivers (Win98, Linux)
UMS-Drivers	..... Freeware USB bench32 tool
USB Bench	..... Training material
Training	..... Hands-on tutorial
Hands-On	..... Whole AT85C51SND3Bx presentations
Presentations	





## Section 3

---

# Tools Install

**3.1 Requirement** Firmware has been developed and debugged using the Keil®  $\mu$ vision IDE. It is a project oriented fully integrated environment including debugger and advanced compiling and linking options like code banking.

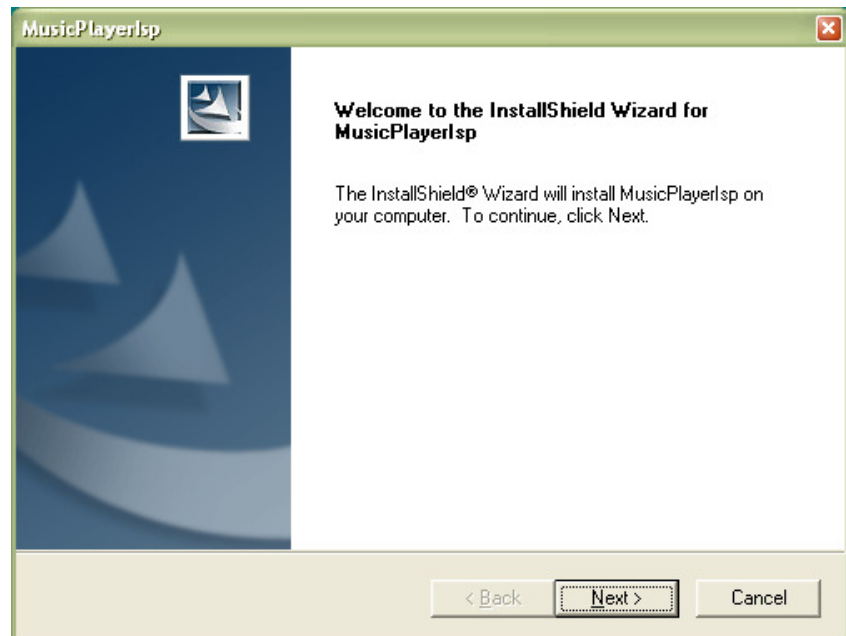
In order to start development with AT85C51SND3B, it is required that the Keil environment is installed on the PC.

**3.2 In System Programming** The in system programming install consists of:

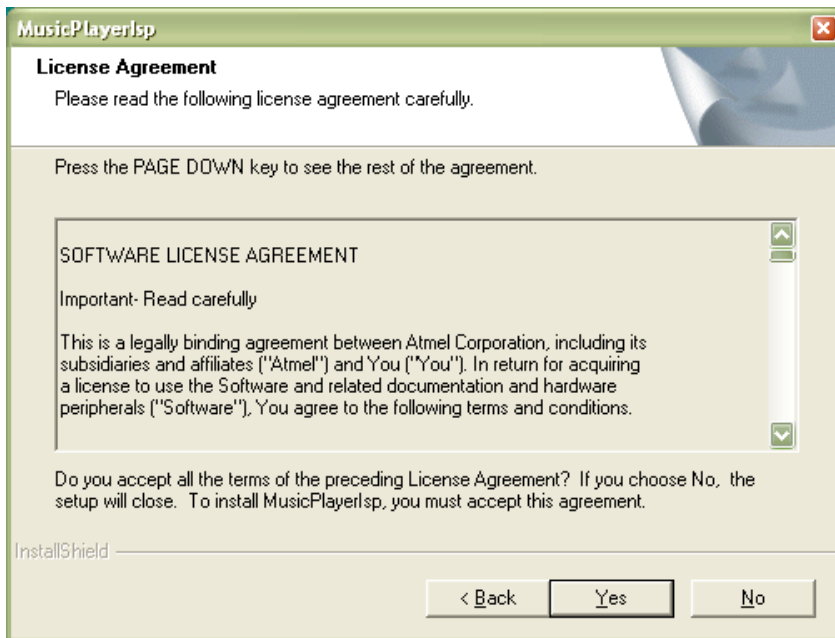
- Atmel MusicPlayerIsp Tool
- Sun™ Java Run time Environment if necessary

**3.2.1 MusicPlayerIsp** To install the Atmel MusicPlayerIsp, go to “Atmel\at85c51snd3b\Tools\In System Programming” directory and execute music-player-isp-X\_Y\_Z.exe; where X\_Y\_Z is the tool revision number.

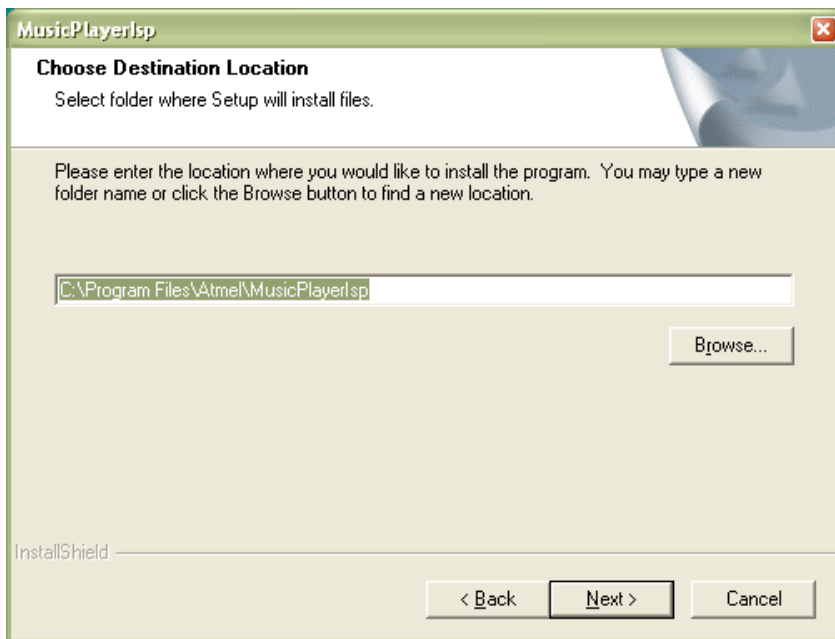
- Press Next to proceed



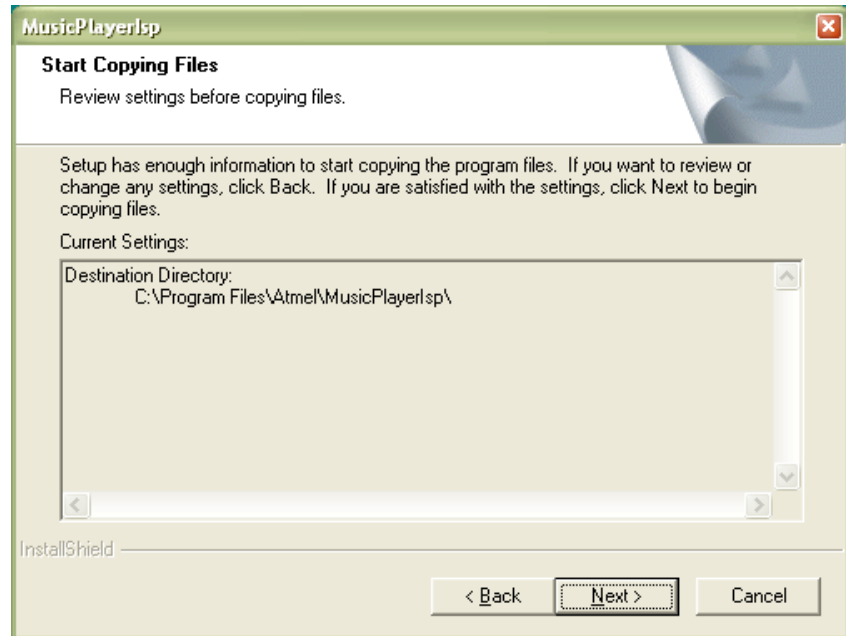
- Read and accept the licence agreement



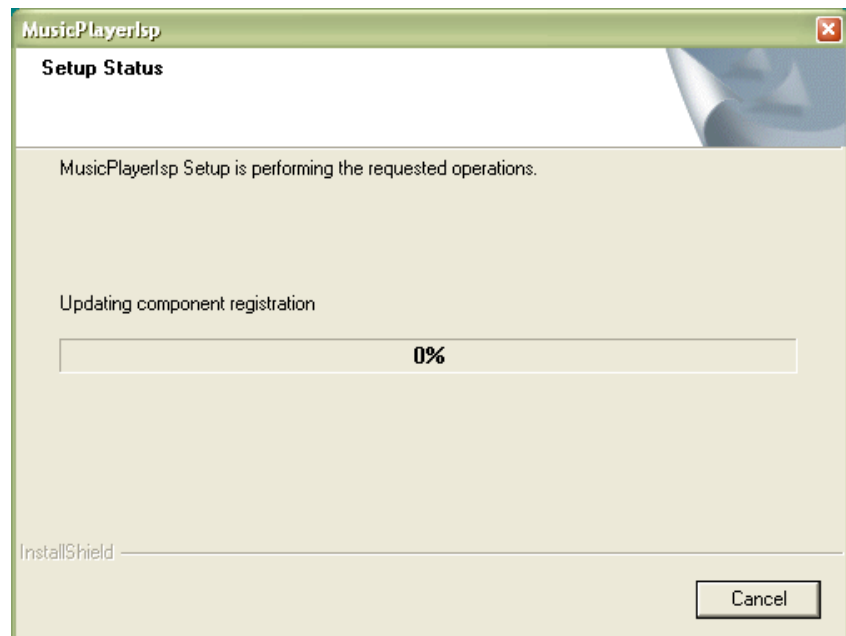
- Select the installation directory (use the proposed default)



- Validate the information

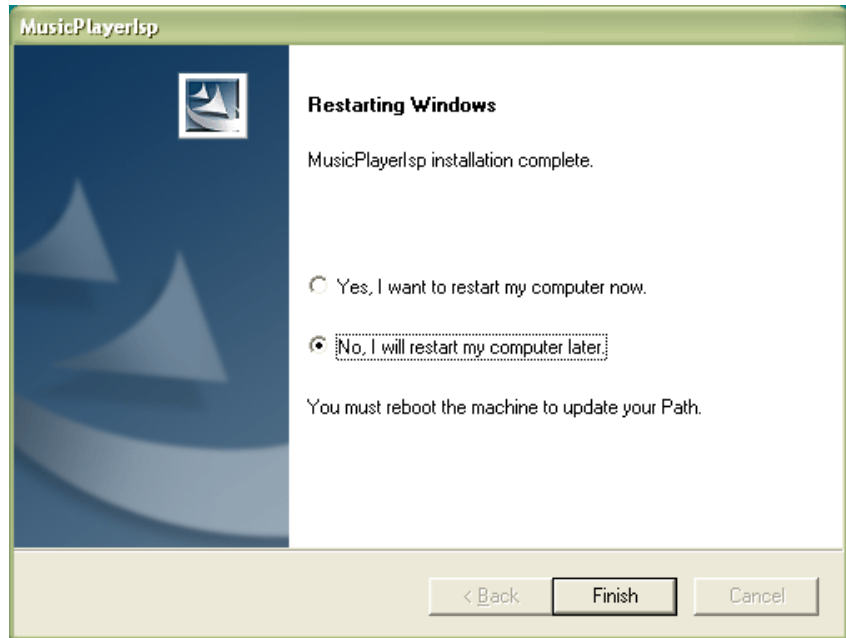


- The installation starts...

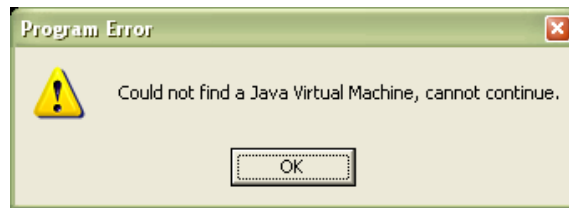




- Do not restart your computer, exit the current session and log-in again



- Start MusicPlayerIsp to check Java runtime installation
- If the following pop-up appears, proceed with the SUN™ JRE installation



**3.2.2 SUN JRE**

To install the JRE, go to “Atmel\at85c51snd3b\Tools\In System Programming” directory and click on the “Sun JRE download” URL shortcut.

Follow the install procedure of the SUN JRE.

**3.3 USB Devices Installation**

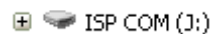
In order to complete the installation, the AT85C51SND3B ISP USB device must be installed.

**3.3.1 AT85C51SND3B ISP USB device**

A USB removable mass-storage disk will be installed after plug-in.

- Press the ISP button
- Plug the board to a PC using the USB cable

A new USB device is installed and one removable disk is mounted in the explorer:



**Note:** The disk letter may differ.



## Atmel Corporation

2325 Orchard Parkway  
San Jose, CA 95131, USA  
Tel: 1(408) 441-0311  
Fax: 1(408) 487-2600

## Regional Headquarters

### Europe

Atmel Sarl  
Route des Arsenaux 41  
Case Postale 80  
CH-1705 Fribourg  
Switzerland  
Tel: (41) 26-426-5555  
Fax: (41) 26-426-5500

### Asia

Room 1219  
Chinachem Golden Plaza  
77 Mody Road Tsimshatsui  
East Kowloon  
Hong Kong  
Tel: (852) 2721-9778  
Fax: (852) 2722-1369

### Japan

9F, Tonetsu Shinkawa Bldg.  
1-24-8 Shinkawa  
Chuo-ku, Tokyo 104-0033  
Japan  
Tel: (81) 3-3523-3551  
Fax: (81) 3-3523-7581

## Atmel Operations

### Memory

2325 Orchard Parkway  
San Jose, CA 95131, USA  
Tel: 1(408) 441-0311  
Fax: 1(408) 436-4314

### Microcontrollers

2325 Orchard Parkway  
San Jose, CA 95131, USA  
Tel: 1(408) 441-0311  
Fax: 1(408) 436-4314

La Chantrerie  
BP 70602  
44306 Nantes Cedex 3, France  
Tel: (33) 2-40-18-18-18  
Fax: (33) 2-40-18-19-60

### ASIC/ASSP/Smart Cards

Zone Industrielle  
13106 Rousset Cedex, France  
Tel: (33) 4-42-53-60-00  
Fax: (33) 4-42-53-60-01

1150 East Cheyenne Mtn. Blvd.  
Colorado Springs, CO 80906, USA  
Tel: 1(719) 576-3300  
Fax: 1(719) 540-1759

Scottish Enterprise Technology Park  
Maxwell Building  
East Kilbride G75 0QR, Scotland  
Tel: (44) 1355-803-000  
Fax: (44) 1355-242-743

### RF/Automotive

Theresienstrasse 2  
Postfach 3535  
74025 Heilbronn, Germany  
Tel: (49) 71-31-67-0  
Fax: (49) 71-31-67-2340

1150 East Cheyenne Mtn. Blvd.  
Colorado Springs, CO 80906, USA  
Tel: 1(719) 576-3300  
Fax: 1(719) 540-1759

### Biometrics/Imaging/Hi-Rel MPU/ High Speed Converters/RF Datacom

Avenue de Rochepleine  
BP 123  
38521 Saint-Egreve Cedex, France  
Tel: (33) 4-76-58-30-00  
Fax: (33) 4-76-58-34-80

---

**Literature Requests**  
[www.atmel.com/literature](http://www.atmel.com/literature)

**Disclaimer:** The information in this document is provided in connection with Atmel products. No license, express or implied, by estoppel or otherwise, to any intellectual property right is granted by this document or in connection with the sale of Atmel products. **EXCEPT AS SET FORTH IN ATMEL'S TERMS AND CONDITIONS OF SALE LOCATED ON ATMEL'S WEB SITE, ATMEL ASSUMES NO LIABILITY WHATSOEVER AND DISCLAIMS ANY EXPRESS, IMPLIED OR STATUTORY WARRANTY RELATING TO ITS PRODUCTS INCLUDING, BUT NOT LIMITED TO, THE IMPLIED WARRANTY OF MERCHANTABILITY, FITNESS FOR A PARTICULAR PURPOSE, OR NON-INFRINGEMENT. IN NO EVENT SHALL ATMEL BE LIABLE FOR ANY DIRECT, INDIRECT, CONSEQUENTIAL, PUNITIVE, SPECIAL OR INCIDENTAL DAMAGES (INCLUDING, WITHOUT LIMITATION, DAMAGES FOR LOSS OF PROFITS, BUSINESS INTERRUPTION, OR LOSS OF INFORMATION) ARISING OUT OF THE USE OR INABILITY TO USE THIS DOCUMENT, EVEN IF ATMEL HAS BEEN ADVISED OF THE POSSIBILITY OF SUCH DAMAGES.** Atmel makes no representations or warranties with respect to the accuracy or completeness of the contents of this document and reserves the right to make changes to specifications and product descriptions at any time without notice. Atmel does not make any commitment to update the information contained herein. Unless specifically provided otherwise, Atmel products are not suitable for, and shall not be used in, automotive applications. Atmel's products are not intended, authorized, or warranted for use as components in applications intended to support or sustain life.

©2007 Atmel Corporation . All rights reserved. Atmel®, logo and combinations thereof, and Everywhere You Are® are the trademarks or registered trademarks, of Atmel Corporation or its subsidiaries. Other terms and product names may be trademarks of others.



Printed on recycled paper.

7712A-MP3-02/07