

PART NUMBER	REV	TERMINATOR	FEED TYPE	DESCRIPTION
1529252-1	B	BENCH & LEADMAKER	MECH POST FEED	HDI APPLICATOR
7-1529252-1	B	BENCH & LEADMAKER	MECH POST FEED	-1 AND SPARE PARTS
7-1529252-7	A	-	-	SPARE PARTS KIT

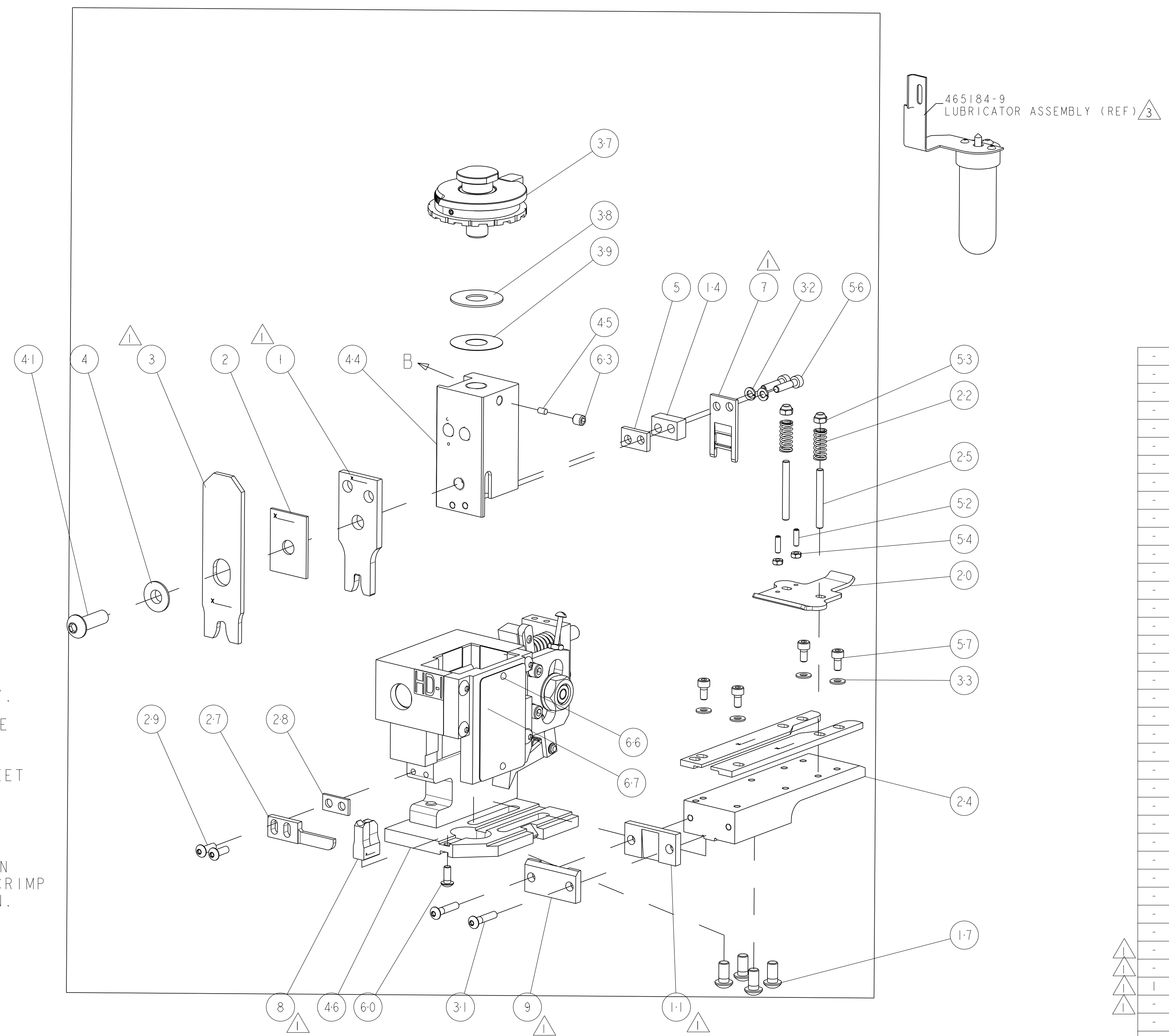
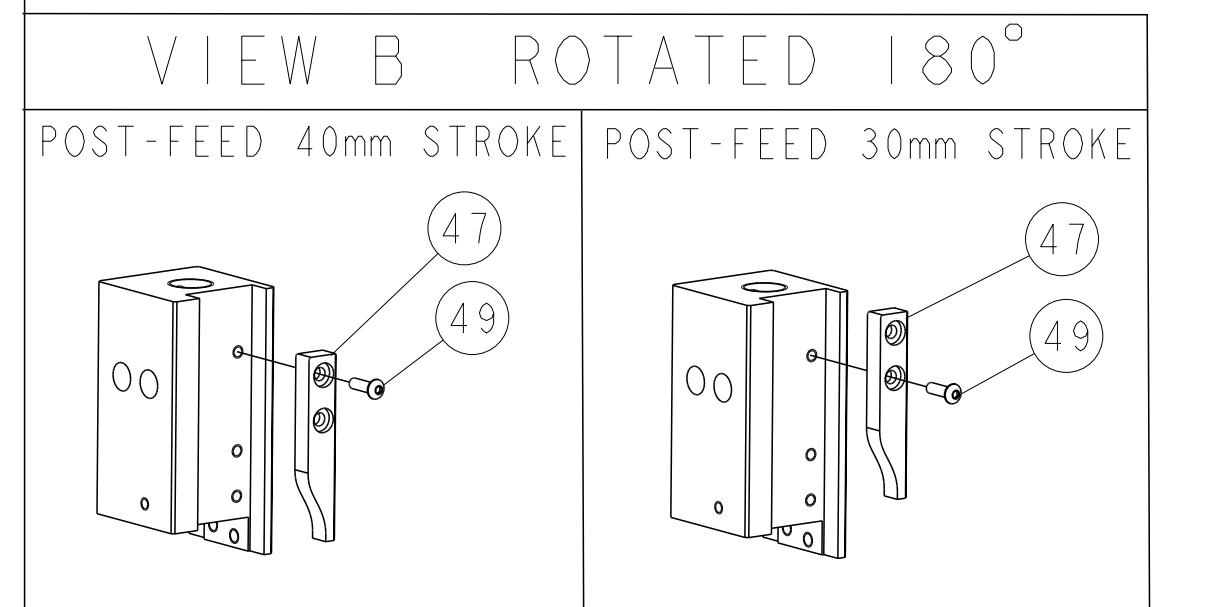
LOC	DIST	REV	DATE	BY	APPD
A	66	A	21SEP2007	DP	MC
		B	30APR2010	MY	GB

CRIMP DATA	TE TERMINAL	TE CRIMP SPECS
TERMINAL NAME: RING TONGUE		
CRIMP	SIZE	TYPE
WIRE	4.57 [.180 IN]	F
INSUL	6.35 [.250 IN]	OV
WIRE STRIP LENGTH		APPL INSTRUCTIONS
5.18-5.94 [.204-.234 IN]		408-8323 & 408-8490
TERMINAL	114-2084	FEED
APPL SPEC	114-3118	27.85 [1.096 IN]

WIRE SIZE	CRIMP HEIGHT	REF SETTING
6.00mm ²	3.10 ± 0.05 [.122 ± .002 IN]	B1
4.00mm ²	2.95 ± 0.05 [.116 ± .002 IN]	C0
3.50mm ²	2.84 ± 0.05 [.112 ± .002 IN]	C7
12 AWG	2.77 ± 0.05 [.109 ± .002 IN]	D4

- 1 RECOMMENDED SPARE PARTS
- 2. GREASE RAM, CAM, CAM FOLLOWER AND FEED ROD LIGHTLY.
- 3 CERTAIN TERMINALS REQUIRE LUBRICATION. REFER TO THE APPLICATOR INSTRUCTION SHEET FOR MORE INFORMATION.
- 4. LUBRICATE DAILY PER THE APPLICATOR INSTRUCTION SHEET SUPPLIED WITH THE APPLICATOR.
- 5 REFER TO APPLICATION SPECIFICATION TEC-114-3118 FOR TENSILE VALUES.
- 6 INSULATION CRIMP FORM MAY NOT CONFORM TO THAT SHOWN IN APPLICATION SPECIFICATION. OVERLAP INSULATION CRIMP FORM REQUESTED FOR A SPECIFIC CUSTOMER APPLICATION.

*** WARNING**
 ON INSTALLATION, SET WIRE DISC TO LARGEST WIRE SIZE SETTING. USE OF SETTINGS BELOW MIN. REQUIRED CRIMP HEIGHT SETTING WILL CAUSE DAMAGE TO CRIMP TOOLING.



QTY	DESCRIPTION	ITEM NO			
-	1338705-4	DOCUMENTATION PACKAGE	71		
-	461264-5	PLATE, IDENTIFICATION	67		
-	21017-2	SCREW, DRIVE	66		
-	3-18031-0	SCR, SET, CUP POINT M6 X 6.0	63		
-	18024-7	SCR, BTN SKT HD CAP (M4 X 10.0)	60		
-	1-18023-0	SCR, SKT HD CAP M4 X 8.0	57		
-	1-994962-6	SCR, SKT HD CAP M4 X 18.0	56		
-	18029-1	NUT, HEX, REG M3	54		
-	986965-1	NUT, LOCK, HEX, TORQUE (M4)	53		
-	2-18032-2	SCR, SET, FLT POINT M3 X 10.0	52		
-	18024-3	SCR, BTN SKT HD CAP (M3 X 10.0)	49		
-	1338676-1	CAM, UNIVERSAL POST-FEED	47		
-	1338662-2	SUB ASSY, APPLICATOR FRAME	46		
-	690191-1	PLUG, NYLON	45		
-	1333260-1	RAM	44		
-	2-18024-6	SCR, BTN SKT HD CAP (M8 X 25.0)	41		
-	690125-1	SHIM SUB-ASSY	39		
-	469367-7	SHIM	38		
-	879103-2	FINE ADJUST HEAD ASSEMBLY	37		
-	18027-2	WASHER, FLAT, REG M4	33		
-	18025-2	WASHER, SPRG LOCK, REG M4	32		
-	1-18024-0	SCR, BTN SKT HD CAP (M4 X 20.0)	31		
-	18024-8	SCR, BTN SKT HD CAP (M4 X 12.0)	29		
-	3-690451-2	SPACER, STRIPPER	28		
-	240639-1	STRIPPER (MACHINING)	27		
-	1320906-1	STUD, THREADED	25		
-	1320995-1	PLATE, STRIP GUIDE	24		
-	4-22281-1	SPRING, DRAG	22		
-	1338665-1	DRAG	20		
-	2-458030-2	STRIP GUIDE, REAR	19		
-	2-458031-2	STRIP GUIDE, FRONT	18		
-	1-18024-8	SCR, BTN SKT HD CAP (M6 X 12.0)	17		
-	7-240641-2	SPACER	14		
-	240644-1	PLATE, REAR SHEAR	11		
-	690496-4	PLATE, FRONT SHEAR	9		
-	2-1633383-6	ANVIL, COMBINATION	8		
-	2-690474-8	BLADE, SLUG	7		
-	-	-	6		
-	240641-5	SPACER	5		
-	238009-1	BLOCK, FL CRIMPER SPACER	4		
-	1633569-6	CRIMPER, INSULATION OVERLAP	3		
-	1-455888-5	SPACER, CRIMPER	2		
-	2-456412-0	CRIMPER, WIRE .180 F PREMIUM	1		
-77	-71	-1	PART NO	DESCRIPTION	ITEM NO

DIMENSIONS: INCHES 9 PLC ±.01 1 PLC ±.01 2 PLC ±.01 3 PLC ±.01 4 PLC ±.0001 ANGLES ±.0001 FINISH	TOLERANCES UNLESS OTHERWISE SPECIFIED: ±.01 ±.01 ±.01 ±.01 ±.0001 ±.01	DWN L LOFTHOUSE CHK M CLIFFORD APVD M CLIFFORD DATE 18JUL2007 NAME PRODUCT SPEC APPLICATION SPEC WEIGHT CUSTOMER DRAWING	Tyco Electronics Harrisburg, PA 17105-3608 FINE ADJUST END FEED HDI APPLICATOR SIZE CAGE CODE DRAWING NO A1 00779 C=1529252 SCALE 3:5 SHEET 1 OF 1 REV B
---	--	--	---